



# I-27 Advisory Committee (S.B. 1474)

Meeting #7  
Del Rio, Texas



September 19, 2024



September 19, 2024

## Welcome and Opening Remarks

Honorable Brenda Gunter, Mayor, City of San Angelo, I-27 Advisory Committee Chair

Caroline Mays, AICP, Director, Planning and Modal Programs, TxDOT

Alejandro "Alex" G. Meade III, Commissioner, Texas Transportation Commission

## Agenda

- 1** | Coffee and Networking
- 2** | Welcome and Opening Remarks
- 3** | Roll Call/Safety Minute
- 4** | Update from Ports-to-Plains Alliance
- 5** | I-27 Designation
- 6** | 2025 Unified Transportation Program Update
- 7** | Metropolitan Planning Organization (MPO) Update
- 8** | Statewide Long-Range Transportation Plan
- 9** | Closing Remarks

## Introduce New Members

City of Lubbock – Mayor, Mark McBrayer



# Roll Call



Committee Chair  
Brenda Gunter  
City of San Angelo



Committee  
Vice-Chair  
Curtis Parrish  
Lubbock County



Mayor  
Alvaro "Al"  
Arreola  
City of Del Rio



Mayor  
Lori Blong  
City of Midland



Mayor  
Robert Moore  
City of Big Spring



Mayor  
Mark McBrayer  
City of Lubbock



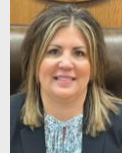
Mayor  
Cole Stanley  
City of Amarillo



Mayor  
Dr. Victor D.  
Trevino  
City of Laredo



County Judge  
Lane Carter  
Tom Green  
County



County Judge  
Alicia Law  
Sherman  
County



County Judge  
Randy Johnson  
Howard County



County Judge  
Terry Johnson  
Midland County



County Judge  
Lewis Owens  
Val Verde County



County Judge  
Rowdy Rhoades  
Moore County



County Judge  
Wes Ritchey  
Dallam County



County Judge  
Nancy Tanner  
Potter County



County Judge  
Tano E. Tijerina  
Webb County



President & CEO  
Tracee Bentley  
Permian  
Strategic  
Partnership



President & CEO  
Kevin Carter  
Segment 1:  
Amarillo  
Economic  
Development  
Corporation



President & CEO  
John Osborne  
Segment 2:  
Lubbock  
Economic  
Development  
Alliance



Economic  
Development  
Director  
Jorge Ramon  
Segment 3:  
City of Del Rio  
Economic  
Development



Executive Vice  
President  
Gerry Schwebel  
International Bank of  
Commerce



Board Member,  
County Commissioner  
Dee Vaughan  
Texas Corn Producers

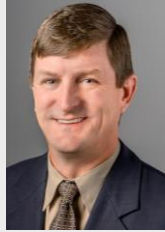
## TxDOT District Leadership



Blair Johnson, P.E.  
District Engineer  
Amarillo District



Steven Warren, P.E.  
District Engineer  
Lubbock District



Glenn Allbritton, P.E.  
District Engineer  
Abilene District



Eric Lykins, P.E.  
District Engineer  
Odessa District



Chris Cowen, P.E.  
District Engineer  
San Angelo District



Epigmenio Gonzalez, P.E.  
District Engineer  
Laredo District



Kit Black, P.E.  
Director TP&D  
Amarillo District



Kylan Francis, P.E.  
Director of TP&D  
Lubbock District



Michael Haithcock, P.E.  
Director of TP&D  
Abilene District



Robert Ornelas, P.E.  
Director of TP&D  
Odessa District



John DeWitt, P.E.  
Director of TP&D  
San Angelo District



Roberto Rodriguez, P.E.  
Director of TP&D  
Laredo District

## Safety Minute

### Ports-to-Plains Corridor Crash Rate

- 29,724 total crashes from 2014-2021
- 383 of these crashes were fatal

### Contributing Factors to Fatalities Along the Ports-to-Plains Corridor

- No Seatbelt Usage
- Speeding
- Distractions from Phones or Other Devices
- Driving Under the Influence of Alcohol or Drugs



## I-27 Implementation Plan

- The I-27 Implementation Plan has published. Please scan the QR code with your phone to view the document.





**I-27  
System in Texas  
Implementation  
Plan**



The map displays the I-27 corridor across Texas, starting from the border with Kansas near Amarillo and extending south to Laredo. Key cities and highways shown include Amarillo, Lubbock, Midland, Big Spring, San Angelo, Del Rio, Ciudad Acuña, Piedras Negras, Eagle Pass, Coahuila, Nuevo Laredo, Laredo, Nuevo Leon, and Matamoros. Major interstate highways like I-40, I-35, I-10, and I-44 are also marked.





September 19, 2024

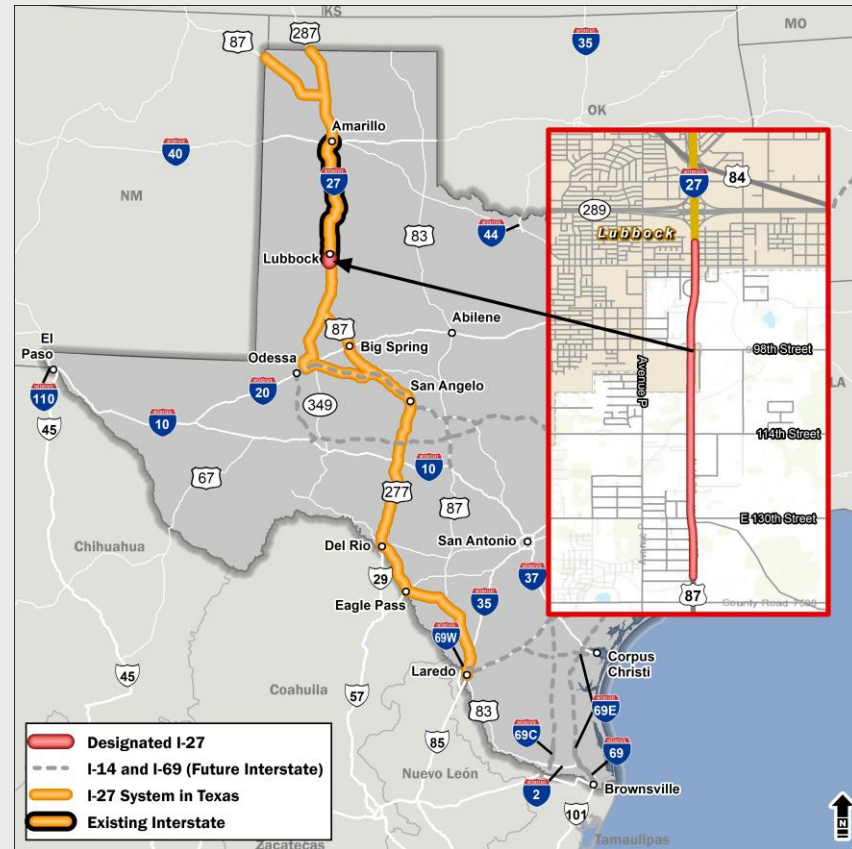
# I-27 Designation

Lorena Echeverria de Misi, P.E.

Corridor Planning Branch Manager, Transportation Planning and Programming Division, TxDOT

## I-27 Designation

- The 4-mile section of US 87 from existing I-27 to south of 130<sup>th</sup> Street in Lubbock has been designated I-27





September 19, 2024

# Update from Ports-to-Plains Alliance

Lauren Garduno

President and CEO, Ports-to-Plains Alliance



September 19, 2024

# 2025 Unified Transportation Program Update

Blair Johnson, P.E., Amarillo District Engineer

Steven Warren, P.E., Lubbock District Engineer

Michael Haithcock, P.E., Abilene Director of Transportation Planning and Development

Eric Lykins, P.E., Odessa District Engineer

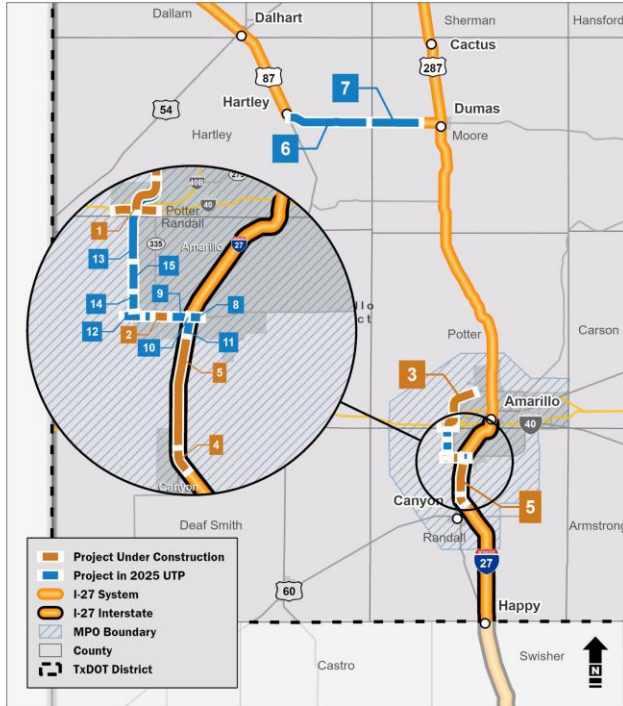
John DeWitt, P.E., San Angelo Director of Transportation Planning and Development

Epigmenio Gonzalez, P.E., Laredo District Engineer



## I-27 System in Texas

### AMARILLO DISTRICT - CURRENT AND PLANNED PROJECTS



PROJECTS UNDER CONSTRUCTION											
#	CSJ	Highway	Project Limits	Project Description	Project Stage	Let Year	ECD	Est Cost Cost	CAT	Funding	
1	0275-01-199	IH 40/SL 335	BI 40-D to FM 2590	SL 33/I-40 West Interchange Phase I: Construct Frontage Roads for Future Freeway	CST	2020	2024	\$50.03 M		\$50.03 M	
2	2635-03-024	SL 335	FM 2590 to West of Coulter	Convert Non-Freeway to Freeway	CST	2021	2025	\$26.0 M		\$26.0 M	
3	2635-04-031	SL 335	SW 9th to FM 1719	C-1 Phase I: Upgrade to 4-Lane Divided from SW 9th to RM 1061; Upgrade to Freeway from RM 1061 to FM 1719	CST	2022	2026	\$133.9 M		\$133.9 M	
4	0067-17-03	IH 27	North of US 60 / US 87 Interchange to South of US 60 / US 87 Interchange	Widen Freeway - Amarillo to Canyon	CST	2024	2028	\$46.1 M		\$46.1 M	
5	0168-09-083	IH 27	SL 335 to North of US 60/US 87 Interchange	Widen Freeway - Amarillo to Canyon	CST	2024	2028	\$264.8 M		\$264.8 M	
<b>Total</b>								-		<b>\$520.8 M</b>	<b>\$520.8 M</b>

See next page for Projects in 2025 UTP

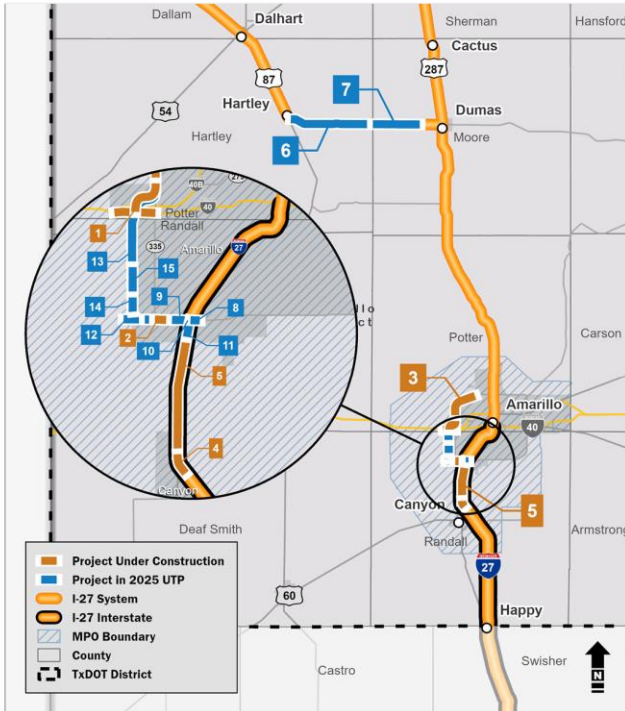
- NOTES:**
- **CST** - Construction
  - **P** - Planning
  - **PE** - Preliminary Engineering
  - **PS&E** - Preparation of Plans, Specifications, and Estimates
  - Map 2 of 3 projects in place for development, not yet to interstate standards
  - SL 335 is being constructed to interstate standards from existing I-27 to US 87

SOURCES: TxDOT 2025 Unified Transportation Program and TxDOT Project Tracker (July 2024)



## I-27 System in Texas

AMARILLO DISTRICT - CURRENT AND PLANNED PROJECTS



FUNDED PROJECTS IN THE 2025 UTP											
#	CSJ	Highway	Project Limits	Project Description	Project Stage	Let Year	Est Cst Cost	CAT Funding	Funding Status	Funding Gap	
6	0425-01-021	US 87	East of US 385 / US 87 Interchange to Moore County Line	Widen Non-Freeway - Dumas (Hartley County)	PS&E	2025	\$110.0 M	\$110.0 M	Full	-	
7	0425-02-037	US 87	Hartley County Line to FM 2589 West of Dumas	Widen Non-Freeway - Dumas (Moore County)	PS&E	2025	\$55.4 M	\$55.4 M	Full	-	
8	2635-02-034	SL 335	IH 27 to Bell Street	SL 335/IH 27 Interchange - Phase II	PS&E	2025-2028	\$29.1 M	\$29.1 M	Full	-	
9	2635-03-028	SL 335	IH 27 to Coulter	SL 335/IH 27 Interchange - Phase II	PS&E	2025-2028	\$163.1 M	\$163.1 M	Full	-	
10	2635-03-023	SL 335	East of Coulter to IH 27	SL 335/IH 27 Interchange - Phase II	PS&E	2025-2028	\$27.5 M	\$27.5 M	Full	-	
11	0168-09-186	IH 27	Sundown Lane to SL 335	SL 335/IH 27 Interchange - Phase II	PS&E	2025-2028	\$18.6 M	\$18.6 M	Full	-	
12	2494-02-011	SL 335	West of FM 2590 (South) to FM 2186	Upgrade to Freeway- Amarillo	PS&E	2029-2034	\$27.1 M	\$3.4 M	Partial	\$23.7 M	
13	2635-05-004	SL 335	FM 2186 to North of FM 2186	Upgrade to Freeway- Amarillo	PS&E	2029-2034	\$26.8 M	\$3.4 M	Partial	\$23.4 M	
14	2635-05-005	SL 335	North of FM 2186 to North of Arden Road	Upgrade to Freeway- Amarillo	PS&E	2029-2034	\$53.5 M	\$6.8 M	Partial	\$46.7 M	
15	2635-05-006	SL 335	North of Arden Road to North of Hillside Road	Upgrade to Freeway	PS&E	2029-2034	\$49.6 M	\$7.6 M	Partial	\$42.1 M	
<b>Total</b>							<b>\$560.7 M</b>	<b>\$424.9 M</b>	-	<b>\$135.9 M</b>	

See next page for Unfunded and Partial Needs

**NOTES:**

- **CST** - Construction
- **P** - Planning
- **PE** - Preliminary Engineering
- **PS&E** - Preparation of Plans, Specifications, and Estimates
- Map 2 of 3 projects in place for development, not yet to interstate standards
- SL 335 is being constructed to interstate standards from existing I-27 to US 87

SOURCES: TxDOT 2025 Unified Transportation Program and TxDOT Project Tracker (July 2024)



## I-27 System in Texas

AMARILLO DISTRICT - CURRENT AND PLANNED PROJECTS



### FUTURE POTENTIAL PROJECTS UNFUNDED OR PARTIALLY FUNDED

#	CSJ	Highway	Project Limits	Project Description	Project Stage	Let Year	Est Cst Cost	CAT Funding	Funding Status	Funding Gap
16	2635-04-040, Etc	SL 335	FM 1719 (Western St) to Echo St	Segment C-2: Convert Non-Freeway to Freeway	PE	2035	\$473.5 M	N/A	None	\$473.5 M
17	2635-06-003, Etc	SL 335	N of 34th to N of BI 40-D	SL 335/IH 40 Interchange Phase II: Construct SL 335 Mainlanes	PS&E	2035	\$175.2 M	N/A	None	\$175.2 M
18	2635-04-038, Etc	SL 335	FM 2590 (Soncy Rd) to SW 9th	Segment B-2 Mainlanes: Phase II Construct Freeway Mainlanes	PS&E	2035	\$29.8 M	N/A	None	\$29.8 M
19	-	IH 27	Amarillo to Dumas	Convert to Interstate Highway	Feasibility Study	-	\$1.6 B	N/A	None	N/A
<b>Total</b>							<b>\$2.28 B</b>	-	-	<b>\$678.5 M</b>

#### NOTES:

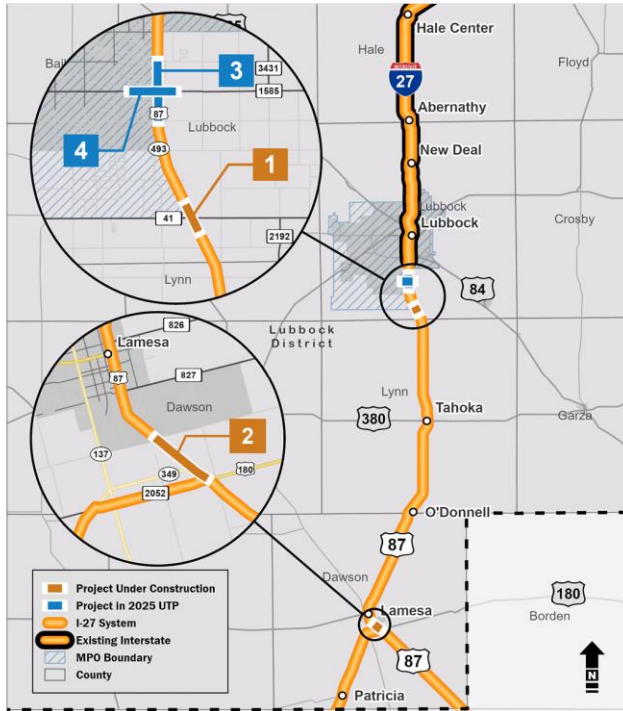
- **CST** - Construction
- **P** - Planning
- **PE** - Preliminary Engineering
- **PS&E** - Preparation of Plans, Specifications, and Estimates
- Map 2 of 3 projects in place for development, not yet to interstate standards
- SL 335 is being constructed to interstate standards from existing I-27 to US 87

SOURCES: TxDOT 2025 Unified Transportation Program and TxDOT Project Tracker (July 2024)



## I-27 System in Texas

### LUBBOCK DISTRICT - CURRENT AND PLANNED PROJECTS



PROJECTS UNDER CONSTRUCTION										
#	CSJ	Highway	Project Limits	Project Description	Project Stage	Let Year	ECD	Est Cat Cost	CAT Funding	
1	0068-01-074	US 87	0.5 mi North of FM 41 to 0.5 mi South of FM 41	New Interchange	CST	2021	10/28/24	\$21.7 M	\$21.7 M	
2	0068-05-040	US 87	CR 1026 to US 180	Widen Non-Freeway - Dawson County	CST	2024	TBD	\$14.7 M	TBD	
<b>Total</b>								-	<b>\$36.4 M</b>	<b>\$21.7 M</b>

FUNDED PROJECTS IN THE 2025 UTP										
#	CSJ	Highway	Project Limits	Project Description	Project Stage	Let Year	Est Cat Cost	CAT Funding	Funding Status	Funding Gap
3	0068-01-073	US 87	114th Street to 146th Street	Lubbock Outer Loop	PS&E	2025-2028	\$144.2 M	\$144.2 M	Full	-
4	1502-01-031	FM 1585	CR 2240 (Ave U) to 0.5 Miles East of US 87	Lubbock Outer Loop	PS&E	2025-2028	\$180.3 M	\$180.3 M	Full	-
<b>Total</b>							<b>\$331.5 M</b>	<b>\$331.5 M</b>	-	-

**NOTES:**

- CST - Construction
- P - Planning
- PE - Preliminary Engineering
- PS&E - Preparation of Plans, Specifications, and Estimates
- Map 1 of 2 projects in place for development, not yet to interstate standards

SOURCES: TxDOT 2025 Unified Transportation Program and TxDOT Project Tracker (July 2024)





## I-27 System in Texas

ABILENE DISTRICT - CURRENT AND PLANNED PROJECTS



FUNDED PROJECTS IN THE 2025 UTP										
#	CSJ	Highway	Project Limits	Project Description	Project Stage	Let Year	Est Cst Cost	CAT Funding	Funding Status	Funding Gap
1	0069-01-061	US 87	2 Miles North of Glasscock County to Glasscock County Line	Widen Non-Freeway - Big Spring (Howard County)	PS&E	2025-2028	\$16.2 M	\$16.2 M	Full	-
2	0069-02-030	US 87	Howard County Line to 0.45 Miles south of Howard County Line	Widen Non-Freeway - Big Spring (Glasscock County)	P	2024-2027	\$3.6 M	\$3.6 M	Full	-
<b>Total</b>							<b>\$19.8 M</b>	<b>\$19.8 M</b>	-	-

**NOTES:**

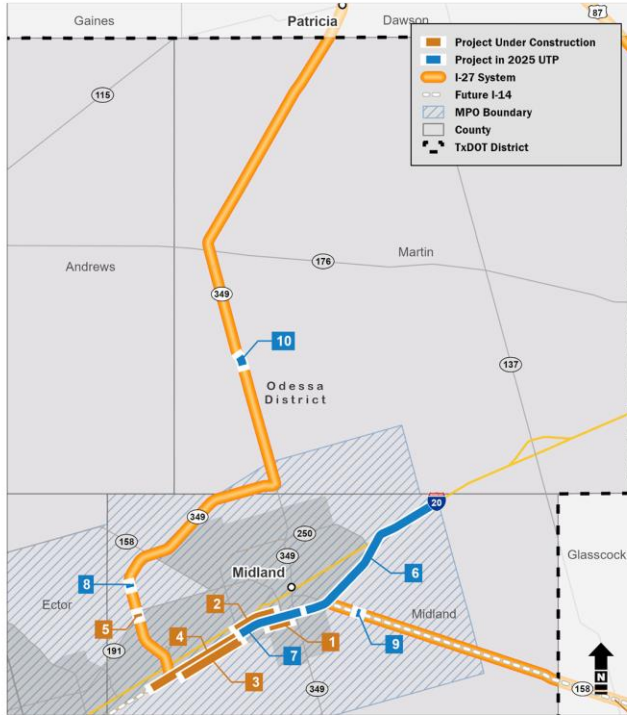
- **CST** - Construction
- **P** - Planning
- **PE** - Preliminary Engineering
- **PS&E** - Preparation of Plans, Specifications, and Estimates
- Map 1 of 2 projects in place for development, not yet to interstate standards

SOURCES: TxDOT 2025 Unified Transportation Program and TxDOT Project Tracker (July 2024)



## I-27 System in Texas

ODESSA DISTRICT - CURRENT AND PLANNED PROJECTS



### PROJECTS UNDER CONSTRUCTION

#	CSJ	Highway	Project Limits	Project Description	Project Stage	Let Year	ECD	Est Cst Cost	CAT Funding
1	0005-14-100	IH 20	At Cotton Flat Rd	Reconstruction of Frontage Roads, Ramps, U-Turns and Interchange	CST	2022	2/13/25	\$68.5 M	\$68.5 M
2	0005-14-067	IH 20	SL 250 to 0.5 Miles East of Midkiff Rd	Replace Existing Underpass with a 4-Lane Wide Overpass Structure, Urban Median, Y-Ramps Configuration	CST	2021	12/2/24	\$36.3 M	\$36.3 M
3	0005-14-084	IH 20	At CR 1250	Construct New Interchange	CST	2021	3/29/24	\$59.1 M	\$59.1 M
4	0005-14-094	IH 20	East of CR 1300 to East of CR 1250	I-20 Project 3d -Widen Freeway	CST	2024	5/22/24	\$174.1 M	\$174.1 M
5	1718-07-045	SH 349	At SH 191	Intersection and Operational Improvement	CST	2023	2/6/25	\$10.8 M	\$10.8 M
<b>Total</b>								<b>\$348.8 M</b>	<b>\$348.8 M</b>

### FUNDED PROJECTS IN THE 2025 UTP

#	CSJ	Highway	Project Limits	Project Description	Project Stage	Let Year	Est Cst Cost	CAT Funding	Funding Status	Funding Gap
6	0005-15-093	IH 20	East of SH 349 to East of FM 1208	I-20 Project 5 -Widen Freeway	PS&E	2029-2034	\$577.9 M	\$72.0 M	Partial	\$505.9 M
7	0005-14-092	IH 20	East of CR 1250 to East of SH 349	I-20 Project 3b -Widen Freeway	PS&E	2025-2028	\$222.5 M	\$222.5 M	Full	-
8	1718-07-047	SH 349	At FM 1788	Intersection and Operational Improvement - Midland County	P	2029-2034	\$5.0 M	\$5.0 M	Full	-
9	0463-03-053	SH 158	At CR 120	Intersection and Operational Improvement	P	2030	\$3.5 M	-	Full	-
10	0380-08-027	SH 349	At CR 3200	Safety Improvements	P	2026	\$5.0 M	\$5.0 M	Full	-
<b>Total</b>							<b>\$813.9 M</b>	<b>\$304.5 M</b>	<b>-</b>	<b>\$505.9 M</b>

See next page for Unfunded and Partial Needs

#### NOTES:

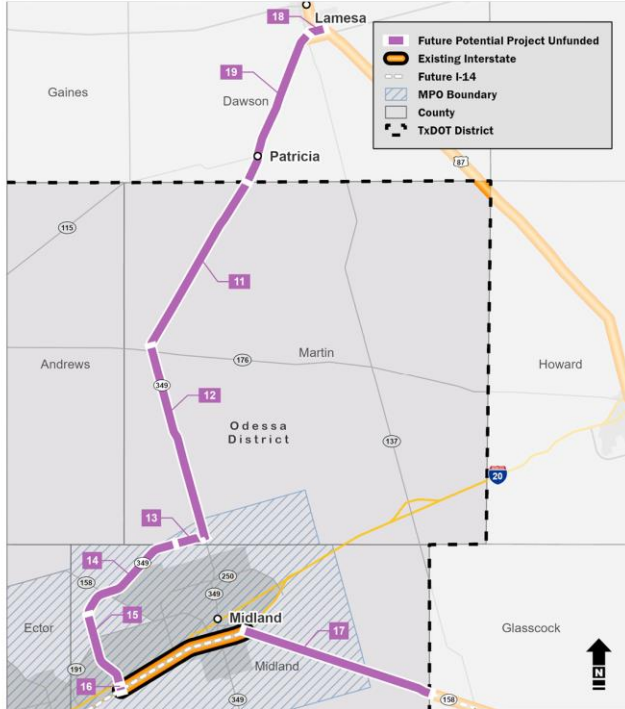
- **CST** - Construction
- **P** - Planning
- **PE** - Preliminary Engineering
- **PS&E** - Preparation of Plans, Specifications, and Estimates
- Map 1 of 3 projects in place for development, not yet to interstate standards

SOURCES: TxDOT 2025 Unified Transportation Program and TxDOT Project Tracker (July 2024)



## I-27 System in Texas

ODESSA DISTRICT - CURRENT AND PLANNED PROJECTS



FUTURE POTENTIAL PROJECTS UNFUNDED OR PARTIALLY FUNDED										
#	CSJ	Highway	Project Limits	Project Description	Project Stage	Let Year	Est Cst Cost	CAT Funding	Funding Status	Funding Gap
11	0380-07-028	SH 349	Dawson C/L to 0.2 mi North of SH 176	Convert Non-Freeway to Freeway	P	2043	\$159.9 M	-	None	\$159.9 M
12	0380-08-030	SH 349	0.2 mi North of SH 176 to SH 349-C	Convert Non-Freeway to Freeway	P	2043	\$162.4 M	-	None	\$162.4 M
13	0380-17-009	SH 349	SH 349-C to Midland County Line	Convert Non-Freeway to Freeway	P	2043	\$27.4 M	-	None	\$27.4 M
14	0380-18-011	SH 349	Martin County Line to FM 1788	Convert Non-Freeway to Freeway	P	2043	\$97.2 M	-	None	\$97.2 M
15	1718-07-049	SH 349	FM 1788 to 0.5 mi S OF BI 20	Convert Non-Freeway to Freeway	P	2043	\$62.1 M	-	None	\$62.1 M
16	1718-01-039	SH 349	BI 20 to IH 20	Convert Non-Freeway to Freeway	P	2043	\$6.8 M	-	None	\$6.8 M
17	0463-03-057	SH 158	IH 20 to Glasscock County Line	Convert Non-Freeway to Freeway	P	2043	\$162.5 M	-	None	\$162.5 M
18	0380-19-005	SH 349	SH 137 to US 87	Convert Non-Freeway to Freeway	P	2043	\$65.0 M	-	None	\$65.0 M
19	0380-06-022	SH 349	SH 137 to Martin County Line	Convert Non-Freeway to Freeway	P	2035	\$570.0 M	-	None	\$570.0 M
<b>Total</b>							<b>\$1.3 B</b>	-	-	<b>\$1.3 B</b>

**NOTES:**

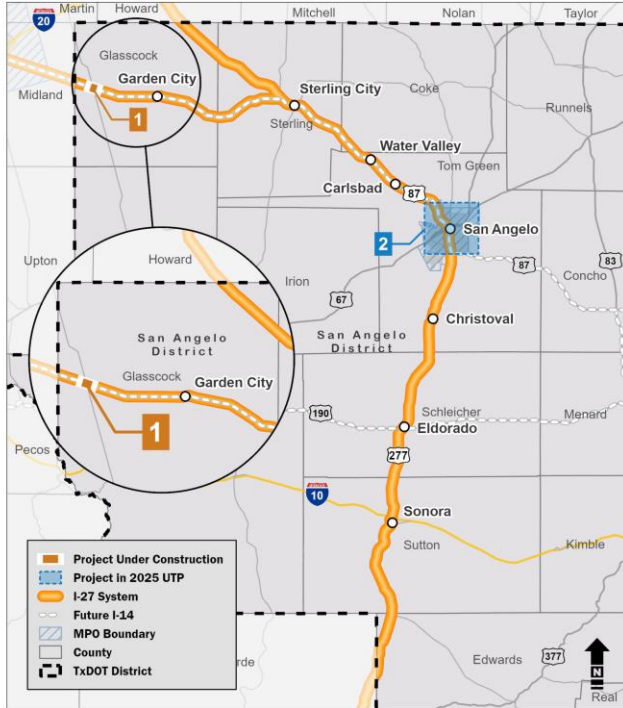
- **CST** - Construction
- **P** - Planning
- **PE** - Preliminary Engineering
- **PS&E** - Preparation of Plans, Specifications, and Estimates
- Map 2 of 3 projects in place for development, not yet to interstate standards

SOURCES: TxDOT 2025 Unified Transportation Program and TxDOT Project Tracker (July 2024)



## I-27 System in Texas

### SAN ANGELO DISTRICT - CURRENT AND PLANNED PROJECTS



#### PROJECTS UNDER CONSTRUCTION

#	CSJ	Highway	Project Limits	Project Description	Project Stage	Let Year	ECD	Est Cst Cost	CAT Funding	
1	0463-04-024	SH 158	At SH 137	Construct overpass	CST	2021	Fall 2024	\$26.9 M	\$26.9M	
<b>Total</b>								-	\$26.9 M	\$26.9 M

#### FUNDED PROJECTS IN THE 2025 UTP

#	CSJ	Highway	Project Limits	Project Description	Project Stage	Let Year	Est Cst Cost	CAT Funding	Funding Status	Funding Gap
2	0907-24-055	New Location	From US 87 to US 67	New Location Freeway - San Angelo	P	2029-2034	\$900.4 M	\$900.4 M	Partial	\$67.2 M
<b>Total</b>							\$900.4 M	\$900.4 M	-	\$67.2 M

See next page for Unfunded and Partial Needs

#### NOTES:

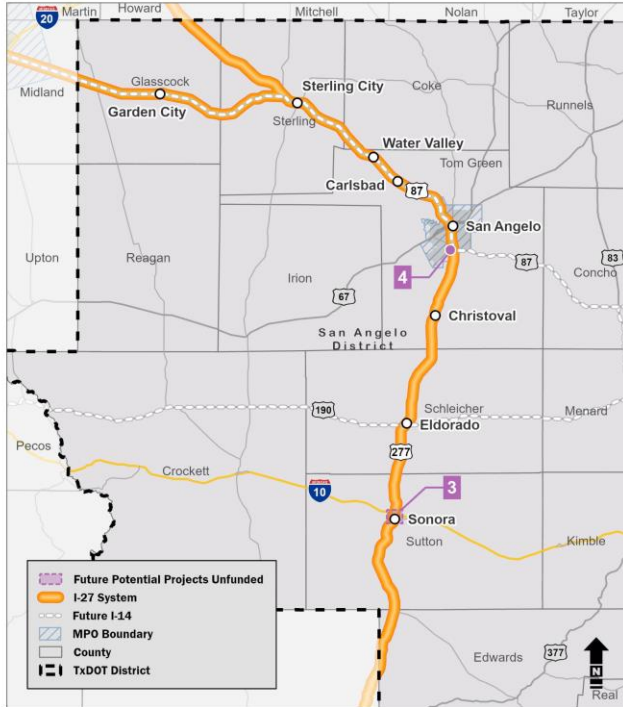
- **CST** - Construction
- **P** - Planning
- **PE** - Preliminary Engineering
- **PS&E** - Preparation of Plans, Specifications, and Estimates
- Map 1 of 3 projects in place for development, not yet to interstate standards

SOURCES: TxDOT 2025 Unified Transportation Program and TxDOT Project Tracker (July 2024)



## I-27 System in Texas

SAN ANGELO DISTRICT - CURRENT AND PLANNED PROJECTS



### FUTURE POTENTIAL PROJECTS UNFUNDED OR PARTIALLY FUNDED

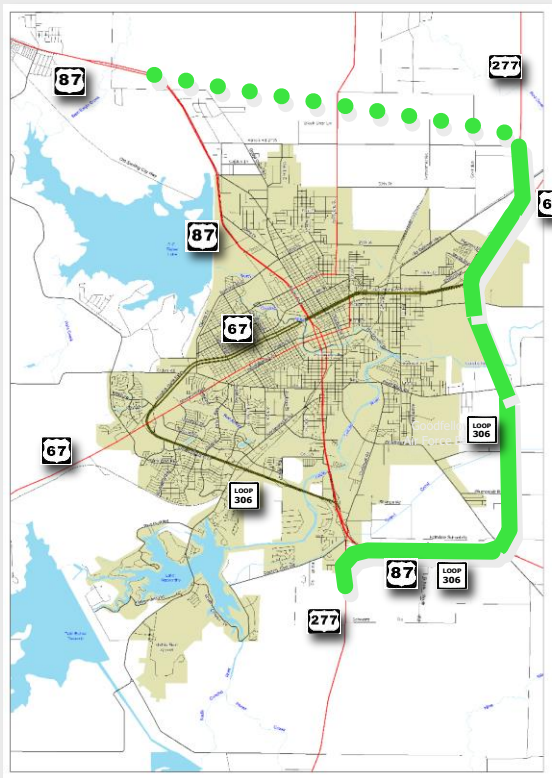
#	CSJ	Highway	Project Limits	Project Description	Project Stage	Let Year	Est Cst Cost	CAT Funding	Funding Status	Funding Gap
3	-	New	Around City of Sonora	Route Study	P	TBD	TBD	N/A	None	N/A
4	-	US 87/ US277/SL 306	Interchange at US 87/US277/ SL 306	Freeway Interchange	P	TBD	TBD	N/A	None	N/A
<b>Total</b>							-	-	-	-

#### NOTES:

- **CST** - Construction
- **P** - Planning
- **PE** - Preliminary Engineering
- **PS&E** - Preparation of Plans, Specifications, and Estimates
- Map 2 of 3 projects in place for development, not yet to interstate standards
- Feasibility Studies done for relief routes in Sonora and San Angelo were studied with an interstate as the ultimate design

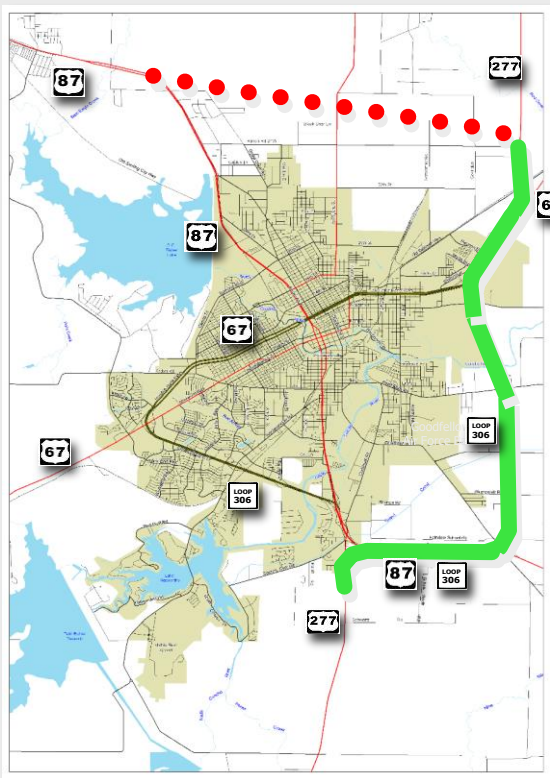
SOURCES: TxDOT 2025 Unified Transportation Program and TxDOT Project Tracker (July 2024)

## San Angelo Relief Route – P2P/IH 27/IH 14 precursor



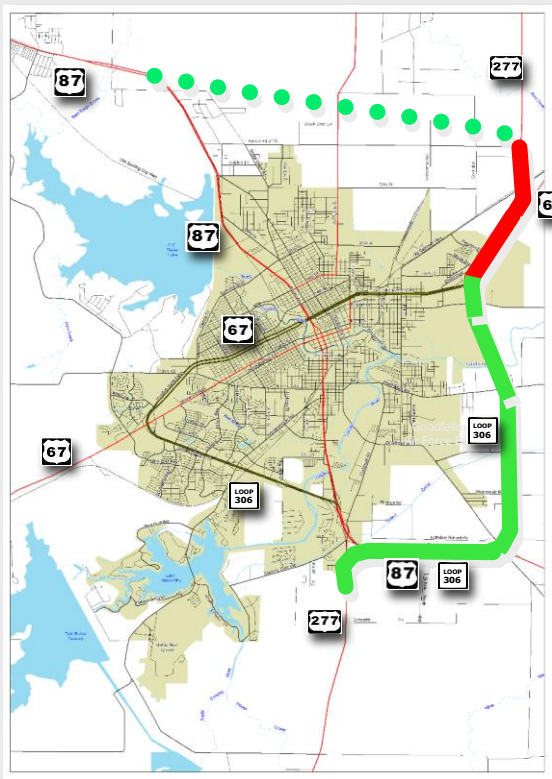
- Serves mobility objectives of Texas Trunk System & Ports-to-Plains corridors
- Preferred alignment established by study chartered by COSA/SAMPO and completed in May 2002
- Study/implementation plan completed in 2022

## San Angelo Relief Route – P2P/IH 27/IH 14 precursor



- Northern Relief Route connection – Authorized to proceed with environmental clearance, schematic development and ROW determination. Work is underway, with the first public meeting scheduled for October 2025.

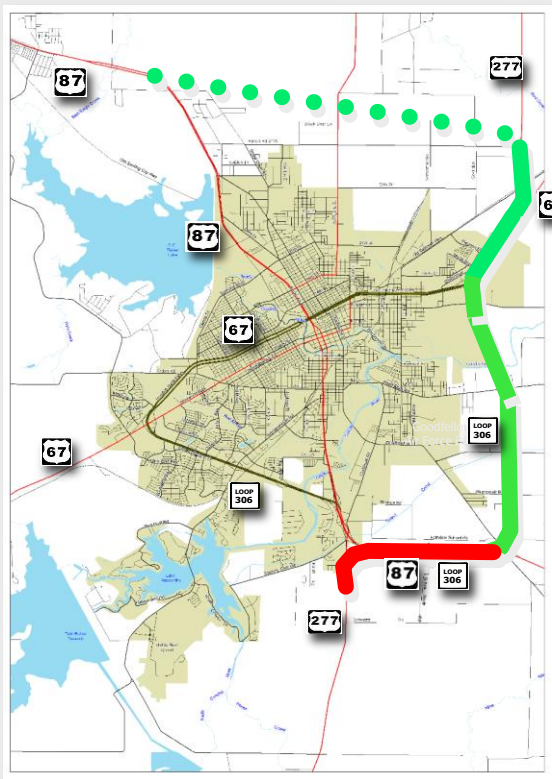
## San Angelo Relief Route – P2P/IH 27/IH 14 precursor



- Expansion of US 277 to freeway standards – ROW acquisition underway, PS&E development at 60%. Scheduled for FY 2027 letting, estimated at \$51 million.

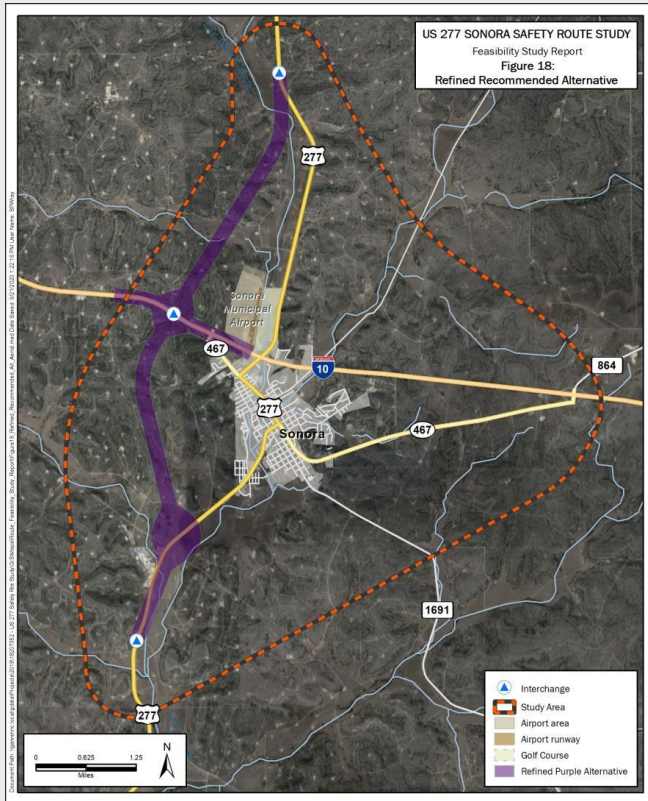


## San Angelo Relief Route – P2P/IH 27/IH 14 precursor



- US 87 southern segment – Partially funded in 2024 UTP. SJT, in conjunction with SAMPO, worked with TPP in the development of the 2025 UTP to reassign Cat. 12 funds allocated here to northern relief route segment while seeking SWDA to proceed with schematic development, environmental clearance and ROW determination here.

## Sonora Safety Route

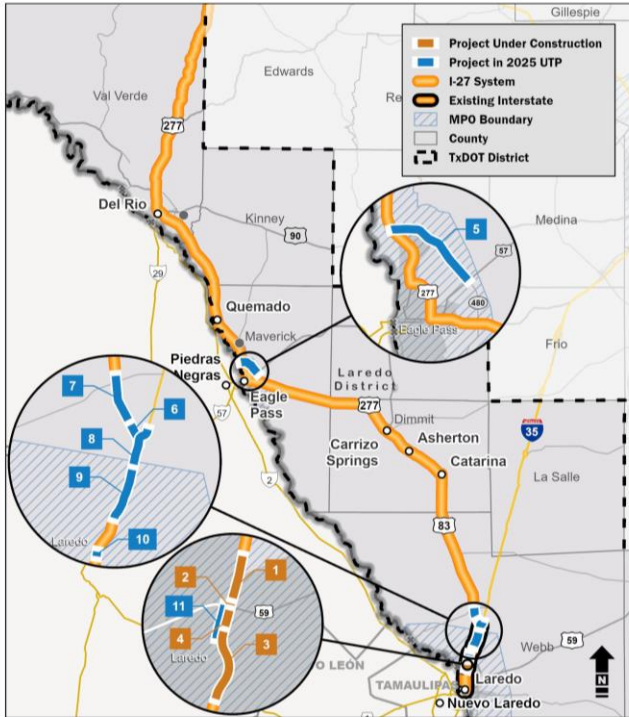


- SJT has worked with Sutton County and Sonora to develop a relief route for US 277.
- Dubbed the “Sonora Safety Route” by County Judge Steve Smith, SJT conducted a feasibility study for a Ports-to-Plains and future Interstate corridor with the County’s support, culminating in the preferred alternative shown here. This study was completed and delivered in FY 2021.
- SJT has listed this as a candidate project for SWDA consideration in the FY 2025 UTP cycle. This authority would allow us to proceed with schematic development, ROW determination and environmental clearance.



## I-27 System in Texas

LAREDO DISTRICT - CURRENT AND PLANNED PROJECTS



### PROJECTS UNDER CONSTRUCTION

#	CSJ	Highway	Project Limits	Project Description	Project Stage	Let Year	ECD	Est Cost	CAT	Funding
1	0018-06-198	IH 35	0.38 mi South of US 59/ IH 35 Interchange to 0.80 Miles North of US 59/IH 35 Interchange	Widen interstate to 6-lane	CST	2020	11/8/23	\$6.1 M	\$6.1 M	
2	0018-06-184	IH 35	0.207 mi West of US 59-SL 20/ IH 35 Interchange to 0.197 mi South of IH 35/US 59-SL 20 Interchange	New direct connector (#8) east I-69W to south IH 35	CST	2020	11/8/23	\$21.9 M	\$21.9 M	
3	0018-06-183	IH 35	0.454 mi South of IH 35/US 59-SL 20 Interchange to 0.732 mi East of US 59-SL 20/IH 35 Interchange	New direct connector (#5) west I-69W to south IH 35	CST	2020	11/8/23	\$29.2 M	\$29.2 M	
4	0018-06-136	IH 35	Shiloh Drive to 0.38 mi South of US 59/IH 35 Interchange	Widen of Interstate to 6-Lane and RR Grade Separation	CST	2020	11/8/23	\$57.7 M	\$57.7 M	
<b>Total</b>								<b>\$134.9 M</b>	<b>\$134.9 M</b>	

### FUNDED PROJECTS IN THE 2025 UTP

#	CSJ	Highway	Project Limits	Project Description	Project Stage	Let Year	Est Cost	CAT	Funding	Funding Status	Funding Gap
5	0299-14-010	SL 480	0.259 mi South of US 57 to US 277N	New Location Non-Freeway - Eagle Pass	PS&E	2025-2028	\$119.6 M	\$119.6 M	Full	-	
6	0037-10-041	US 83	Los Botines Ln to US 83 / IH 35	Widen Non-Freeway - Webb County	PS&E	2025-2028	\$37.3 M	\$37.3 M	Full	-	
7	0037-10-040	US 83	1 Miles North of SH 255 to Los Botines Ln	Widen Non-Freeway - Laredo	PS&E	2025-2028	\$50.4 M	\$50.4 M	Full	-	
8	0018-05-094	IH 35	2.68 mi North of Uniroyal Interchange to 1.2 mi North of US 83 Interchange	Widen Freeway	PS&E	2026	\$270.7 M	\$270.7 M	Full	-	
9	0018-05-089	IH 35	.47 mi South of Uniroyal Interchange to 3.2 mi North of Uniroyal Interchange	Replace Bridge at Uniroyal Drive - Laredo	PS&E	2025-2028	\$254.1 M	\$254.1 M	Full	-	
10	0018-06-218	IH 35	.5 mi North of Vallecillo Rd to .5 mi South of Vallecillo Rd	Interchange (New or Reconstructed)	PS&E	2029-2034	\$72.8 M	\$16.0 M	Partial	\$56.8 M	
11	0018-06-185	IH 35	.5 mi East of IH 35 to .5 mi North of US 59	Interchange (New or Reconstructed)	PS&E	2025	\$113.5 M	\$113.5 M	Full	-	
<b>Total</b>								<b>\$918.4 M</b>	<b>\$861.6 M</b>	-	<b>\$56.8 M</b>

See next page for Unfunded and Partial Needs

#### NOTES:

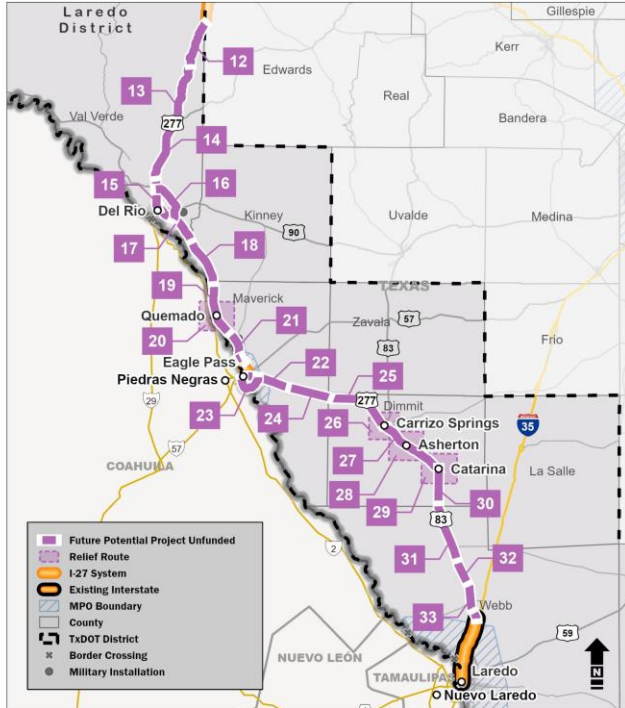
- **CST** - Construction
- **P** - Planning
- **PE** - Preliminary Engineering
- **PS&E** - Preparation of Plans, Specifications, and Estimates
- Map 1 of 3 projects in place for development, not yet to interstate standards
- SL 480 is planned as a relief route around the City of Eagle Pass. Eventually, I-27 will use SL 480 for the ultimate route

SOURCES: TxDOT 2025 Unified Transportation Program and TxDOT Project Tracker (July 2024)



# I-27 System in Texas

## LAREDO DISTRICT - CURRENT AND PLANNED PROJECTS



FUTURE POTENTIAL PROJECTS UNFUNDED OR PARTIALLY FUNDED											
#	CSJ	Highway	Project Limits	Project Description	Project Stage	Let Year	Est Cost	CAT Funding	Funding Status	Funding Gap	
12	0160-04-052	US 277	16.1 mi North of US 377 to Val Verde/Edwards County Line	Reconstruction of existing roadway to freeway standards	P	2034	\$206.8 M	N/A	None	\$206.8 M	
13	0160-05-051	US 277	US 377 to 16.1 mi North of US 377	Reconstruction of existing roadway to freeway standards	P	2034	\$266.4 M	N/A	None	\$266.4 M	
14	0160-06-036	US 277	9.3 mi North of US 90 South Intersection to US 377	Reconstruction of existing roadway to freeway standards	P	2034	\$210.1 M	N/A	None	\$210.1 M	
15	0160-07-035	US 277	Del Rio to 9.3 mi North of US 90 South Intersection	Reconstruction of existing roadway to freeway standards	P	2034	\$153.9 M	N/A	None	\$153.9 M	
16	3621-01-019	SL 79	US 277 North to US 277 South	Widen Non-Freeway	P	2035	\$232.2 M	N/A	None	\$232.2 M	
17	0029-01-077	US 277	13.6 mi North of the Maverick County Line to Del Rio	Reconstruction of existing roadway to freeway standards	P	2034	\$191.9 M	N/A	None	\$191.9 M	
18	0299-02-038	US 277	Maverick/Kinney County Line to 13.6 mi North of the Maverick County Line	Reconstruction of existing roadway to freeway standards	P	2034	\$225.0 M	N/A	None	\$225.0 M	
19	0299-03-075	US 277	0.6 mi North of SH 131 to the Maverick/Kinney County Line	Reconstruction of existing roadway to freeway standards	P	2034	\$274.6 M	N/A	None	\$274.6 M	
20	0922-10-038	New Location	Around City of Quemado	Route Study	P	2034	\$29.5 M	N/A	None	\$29.5 M	
21	0299-04-041	US 277	0.3 mi S of FM 1665 (South) to 0.45 mi N of FM 1588	Reconstruct & widen to 4-lane divided	P	2035	\$36.2 M	N/A	None	\$36.2 M	
21	0299-04-084	US 277	Eagle Pass to 0.6 mi North of SH 131	Reconstruction of existing roadway to freeway standards	P	2034	\$216.7 M	N/A	None	\$216.7 M	
22	0300-01-110	US 277	11.8 mi West of the Dimmit County Line to Eagle Pass	Reconstruction of existing roadway to freeway standards	P	2034	\$170.4 M	N/A	None	\$170.4 M	
23	0299-14-036	SL 480	US 277 North to US 277 South	Widen Non-Freeway	P	2035	\$232.2 M	N/A	None	\$232.2 M	
24	0300-02-044	US 277	Dimmit/Maverick County Line to 11.8 mi West of the Dimmit County Line	Reconstruction of existing roadway to freeway standards	P	2034	\$195.2 M	N/A	None	\$195.2 M	
25	0300-03-080	US 83	Carrizo Springs to Dimmit/Maverick County Line	Reconstruction of existing roadway to freeway standards	P	2034	\$319.3 M	N/A	None	\$319.3 M	
26	0922-49-006	New Location	Around City of Carrizo Springs	Route Study	P	2034	\$88.6 M	N/A	None	\$88.6 M	

See next page for continued Unfunded and Partial Needs

**NOTES:**

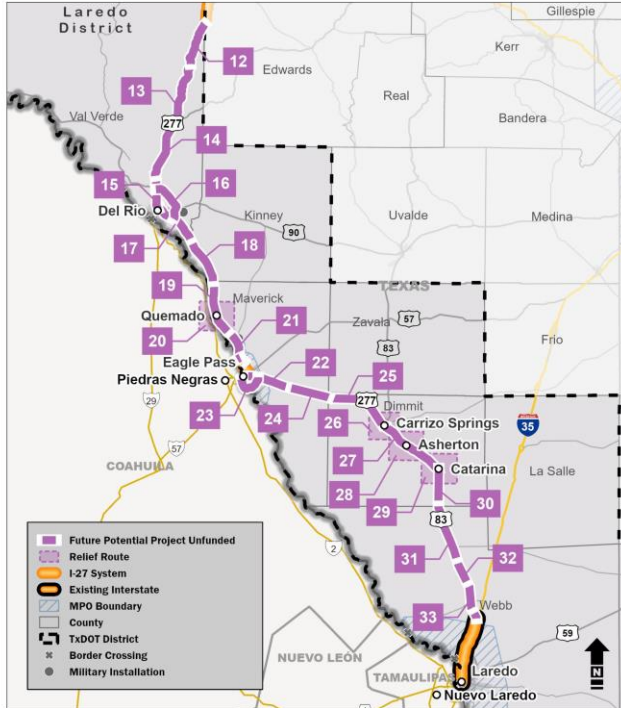
- **CST** - Construction
- **P** - Planning
- **PE** - Preliminary Engineering
- **PS&E** - Preparation of Plans, Specifications, and Estimates
- Map 2 of 3 projects in place for development, not yet to interstate standards

SOURCES: TxDOT 2025 Unified Transportation Program and TxDOT Project Tracker (July 2024)



## I-27 System in Texas

LAREDO DISTRICT - CURRENT AND PLANNED PROJECTS



FUTURE POTENTIAL PROJECTS											
#	CSJ	Highway	Project Limits	Project Description	Project Stage	Let Year	Est Cst Cost	CAT Funding	Funding Status	Funding Gap	
27	0037-06-109	US 83	10 mi North of County Line to Carrizo Springs	Reconstruction of existing roadway to freeway standards	P	2033	\$314.3 M	N/A	None	\$314.3 M	
28	0922-49-005	New Location	Around City of Asherton	Route Study	P	2034	\$73.9 M	N/A	None	\$73.9 M	
29	0922-49-004	New Location	Around City of Catarina	Route Study	P	2034	\$44.3 M	N/A	None	\$44.3 M	
30	0037-08-045	US 83	Webb/Dimmit County Line to 10 mi North of the County Line	Reconstruction of existing roadway to freeway standards	P	2033	\$176.4 M	N/A	None	\$176.4 M	
31	0037-09-035	US 83	16 mi North of IH 35 to Webb/Dimmit County Line	Reconstruction of existing roadway to freeway standards	P	2033	\$273.0 M	N/A	None	\$273.0 M	
32	0037-10-044	US 83	US 83/IH 35 Underpass to 16 mi North of IH 35 Underpass	Reconstruction of existing roadway to freeway standards	P	2034	\$268.0 M	N/A	None	\$268.0 M	
33	0037-10-046	US 83	1.5 mi South of SH 255 to 4.5 mi North of SH 255	Widen to 4-lane Divided	PE	2035	\$185.0 M	\$185.0 M	None	-	
<b>Total</b>							<b>\$4.4 B</b>	<b>\$185 M</b>	<b>-</b>	<b>\$4.4 B</b>	

- NOTES:**
- **CST** - Construction
  - **P** - Planning
  - **PE** - Preliminary Engineering

- **PS&E** - Preparation of Plans, Specifications, and Estimates
- Map 2 of 3 projects in place for development, not yet to interstate standards

SOURCES: TxDOT 2025 Unified Transportation Program and TxDOT Project Tracker (July 2024)



September 19, 2024

# Metropolitan Planning Organization (MPO) Update

Juan Mendive, MPO Director, Laredo and Webb County

Major Hofheins, MPO Director, San Angelo

Placido Madera, MPO Director, Eagle Pass



September 19, 2024

# Laredo and Webb County Area Metropolitan Planning Organization



Juan S. Mendive, AICP  
MPO Director

I-27 Advisory Committee  
Meeting



# Agenda

- Background on MPO
- Population Growth
- Freight Network
- Border Crossings
- Safety, Security, and Resiliency
- Select MPO and TxDOT Projects

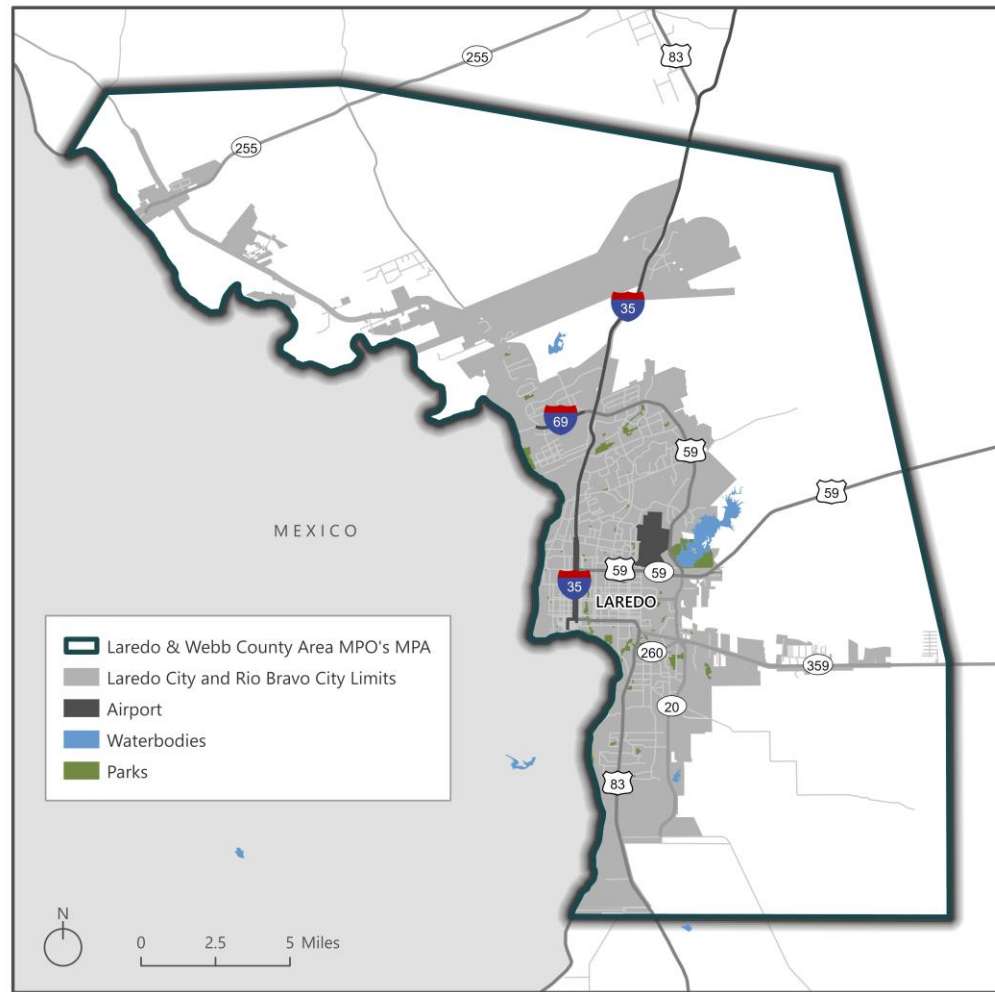






## Metropolitan Planning Area (MPA)

- City of Laredo
- City of Rio Bravo
- Portions of Webb County (about 12 %)









Laredo & Webb County Area MPO's MPA



## Governance Structure

- The Laredo & Webb County Area MPO (LWCAMPO) is governed by the Policy Committee.
- The LWCAMPO Bylaws were amended in 2023 allowing the Chairperson and Vice-Chairperson to rotate every two years between the City of Laredo Mayor and Webb County Judge.
- Currently the Chairperson of the LWCAMPO Policy Committee is Webb County Judge Tano E. Tijerina through the end of 2024.
- The City of Laredo Mayor Dr. Victor D. Treviño currently serves as the Vice Chairperson.



<p><b>City of Laredo:</b></p>  <ul style="list-style-type: none"> <li>◆ Mayor</li> <li>◆ 2 City Councilmembers (Mayoral appointees)</li> </ul>	<p><b>Laredo Mass Transit Board:</b></p>  <ul style="list-style-type: none"> <li>◆ 1 Laredo Mass Transit Board Member (Appointed by Board's Presiding Officer/Mayor)</li> </ul>
<p><b>County of Webb:</b></p>  <ul style="list-style-type: none"> <li>◆ County Judge</li> <li>◆ 2 County Commissioners (Webb County Judge Appointees)</li> </ul>	<p><b>State of Texas:</b></p>  <ul style="list-style-type: none"> <li>◆ TxDOT District Engineer</li> </ul>
<p><b>Member at Large:</b></p>  <ul style="list-style-type: none"> <li>◆ Member Appointed by the Policy Committee</li> </ul>	<p><b>*EX-Officio* State of Texas:</b></p>  <ul style="list-style-type: none"> <li>◆ State Senator(s)</li> <li>◆ State Representative(s)</li> </ul>



# Metropolitan Transportation Plan (MTP)

- [Planning Horizon](#): 25 years
- [Updated](#): Every 5 years
- [Purpose](#): The MTP establishes the long-term transportation policy agenda for the region. The MTP outlines regional transportation priorities and identifies transportation projects to meet regional transportation goals over the plan's horizon, while remaining fiscally constrained.



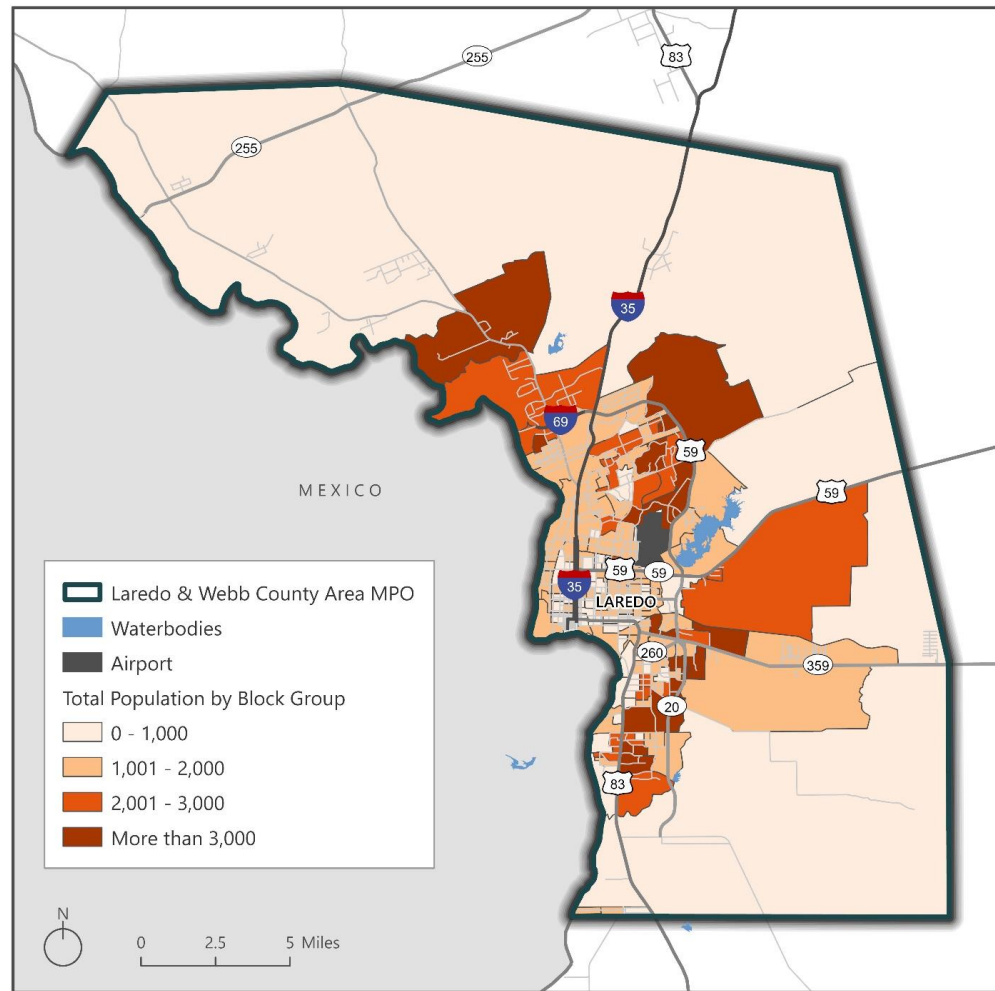
**Metropolitan  
Transportation  
Plan 2025-2050**

Laredo & Webb Co.



# Existing Population

GEOGRAPHY	2010 CENSUS	2020 CENSUS	2022 ACS 5-YEAR ESTIMATE
City of Laredo	236,091	255,205	255,293
LWCAMPO MPA	246,279	264,047	264,487
Webb County	250,304	267,114	267,282
Texas	25,145,561	29,145,505	29,243,342
United States	308,745,538	331,449,281	331,097,593

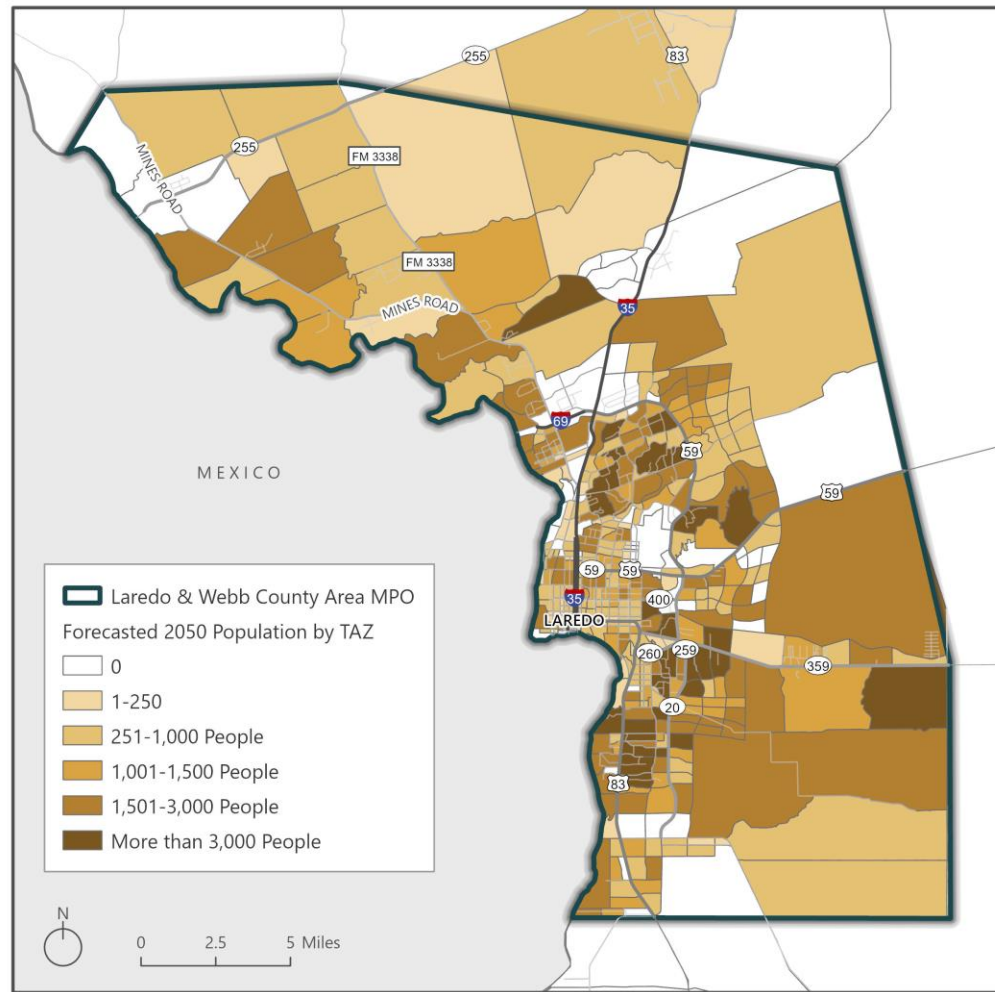


TOTAL POPULATION BY BLOCK GROUP



## Population Forecast – Year 2050

- The MPO utilizes a Travel Demand Model (TDM) to forecast regional growth.
- Population was forecasted from base year 2018 to forecast year 2050 by Traffic Analysis Zones (TAZ).
- The total population is forecasted to **489,977** by 2050.

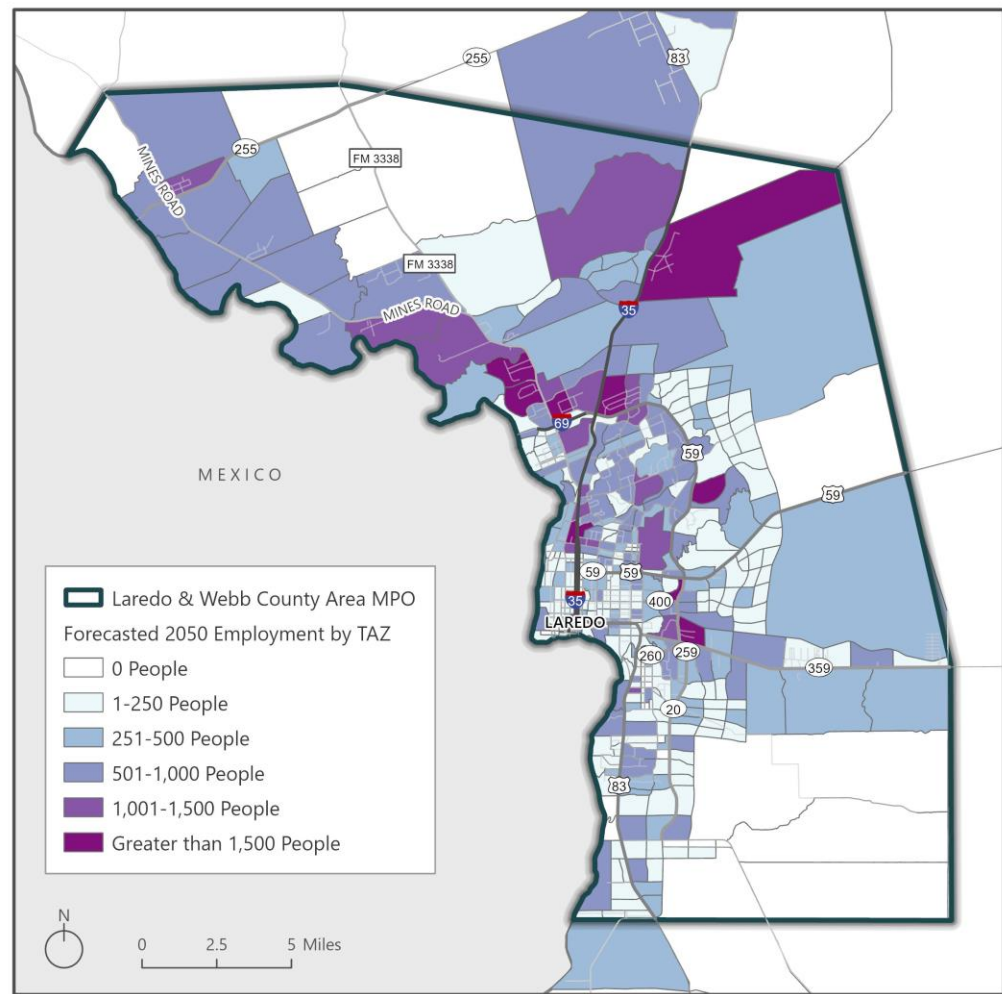


LAREDO & WEBB COUNTY MPO FORECASTED 2050 POPULATION



## Employment Forecast – Year 2050

- The TDM is also utilized to forecast employment growth.
- Employment was forecasted from base year 2018 to forecast year 2050 by Traffic Analysis Zones (TAZ).
- The total employment is forecasted to **187,780** jobs by 2050.

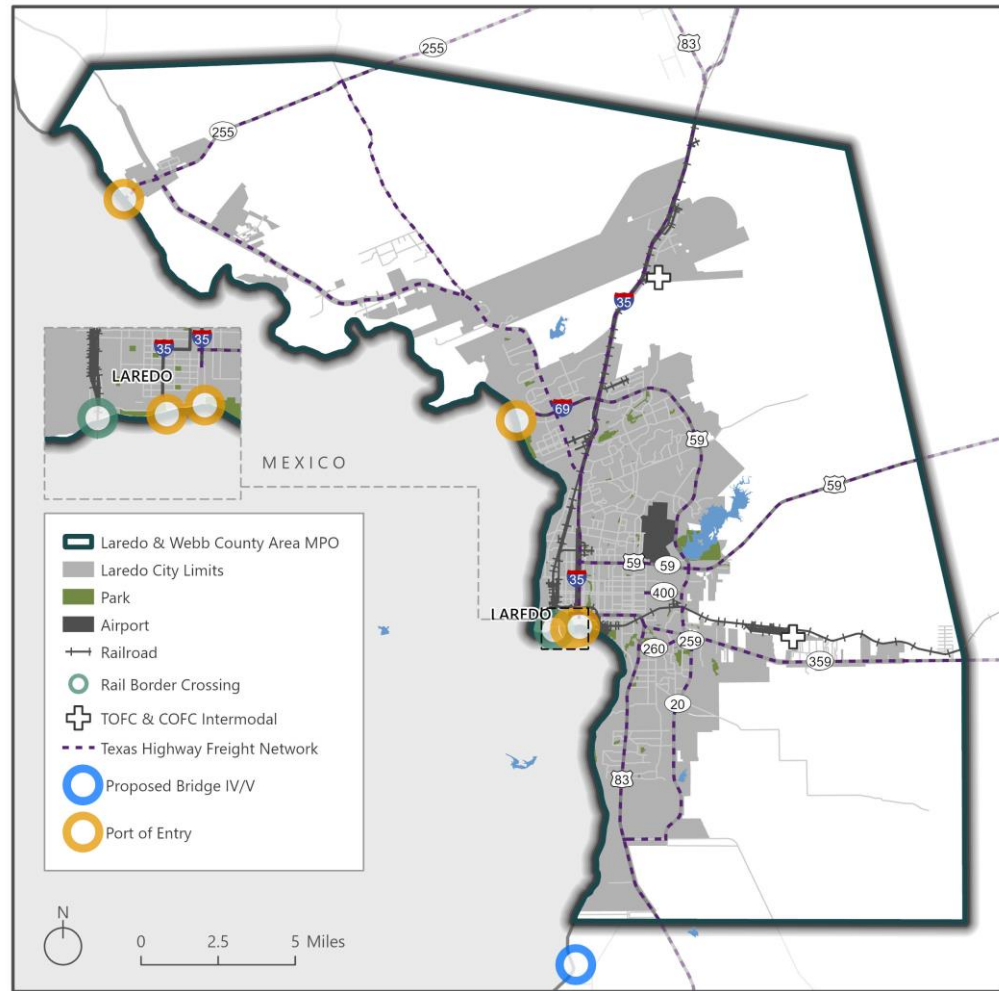


LAREDO & WEBB COUNTY MPO FORECASTED 2050 EMPLOYMENT



# Freight Network

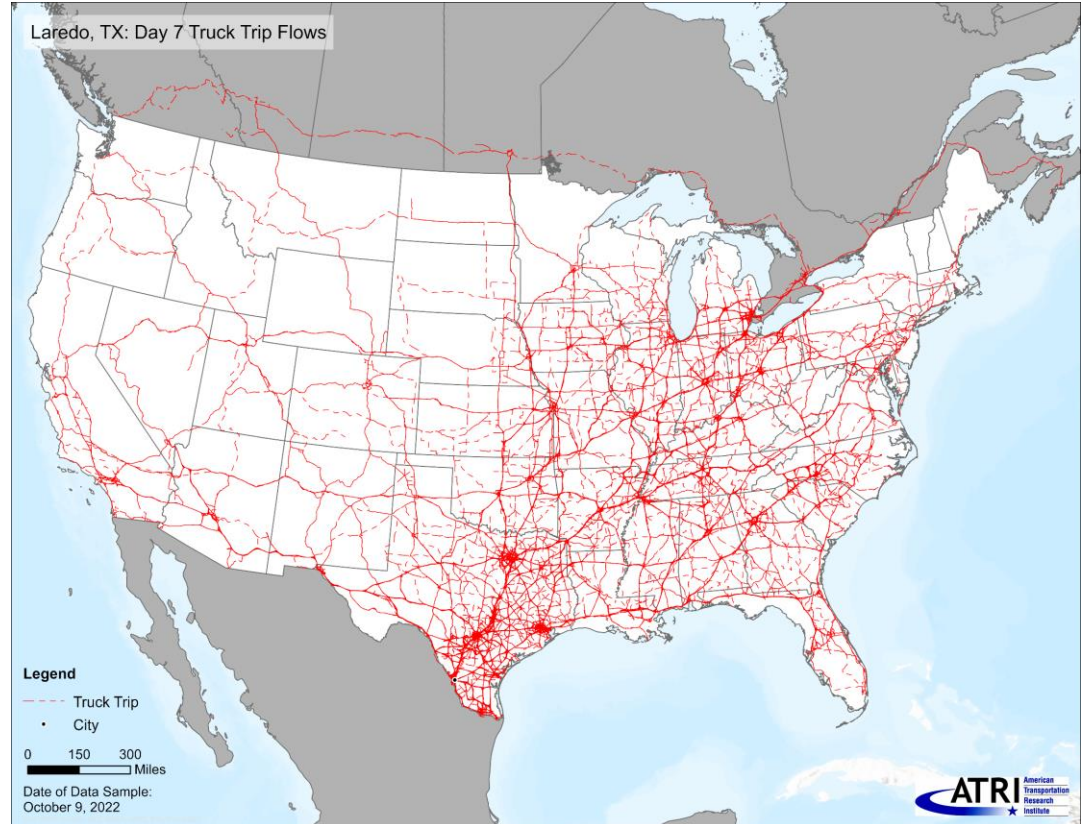
Laredo became the nation's **top port** in 2023 with **\$320 billion** in total U.S. trade.



LAREDO & WEBB COUNTY MPO FREIGHT NETWORK

## Laredo Truck Trip Flows

- This map from the American Transportation Research Institute shows Day 7 Truck Trip Flows.
- GPS/transponder data from trucks crossing Laredo border.

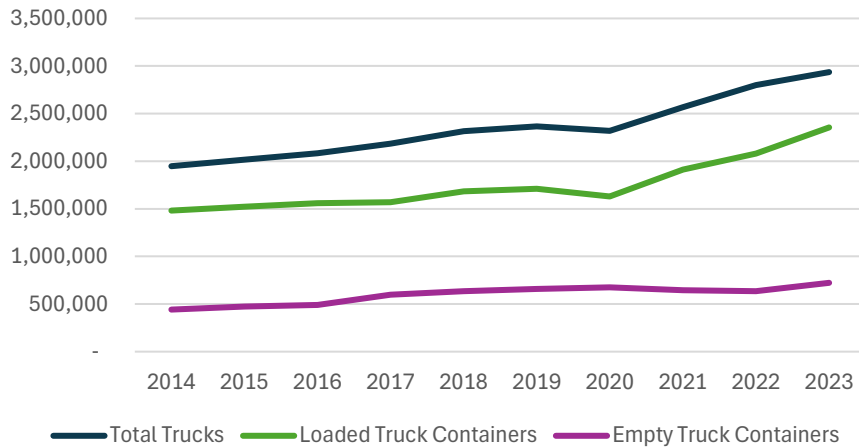




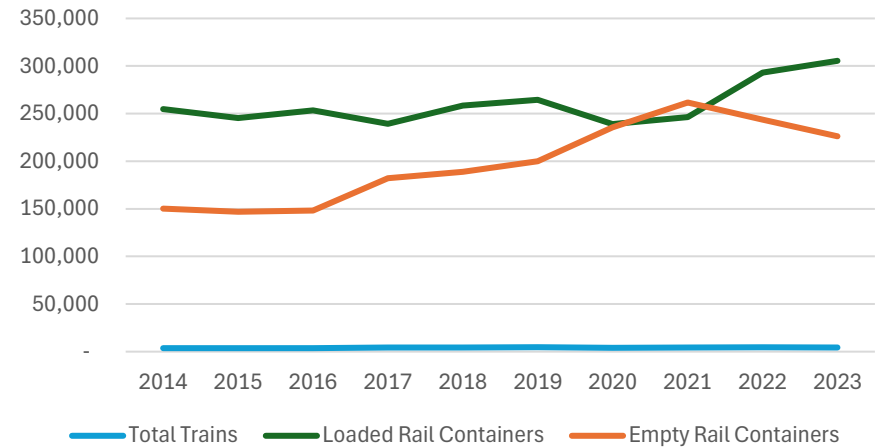


# Border Crossings

## Northbound Truck Activity



## Northbound Rail Activity



(Source: U.S. DOT Bureau of Transportation Statistics)



# Border Crossings

## Laredo Compared to Rest of Texas-Mexico Border: Truck Entries

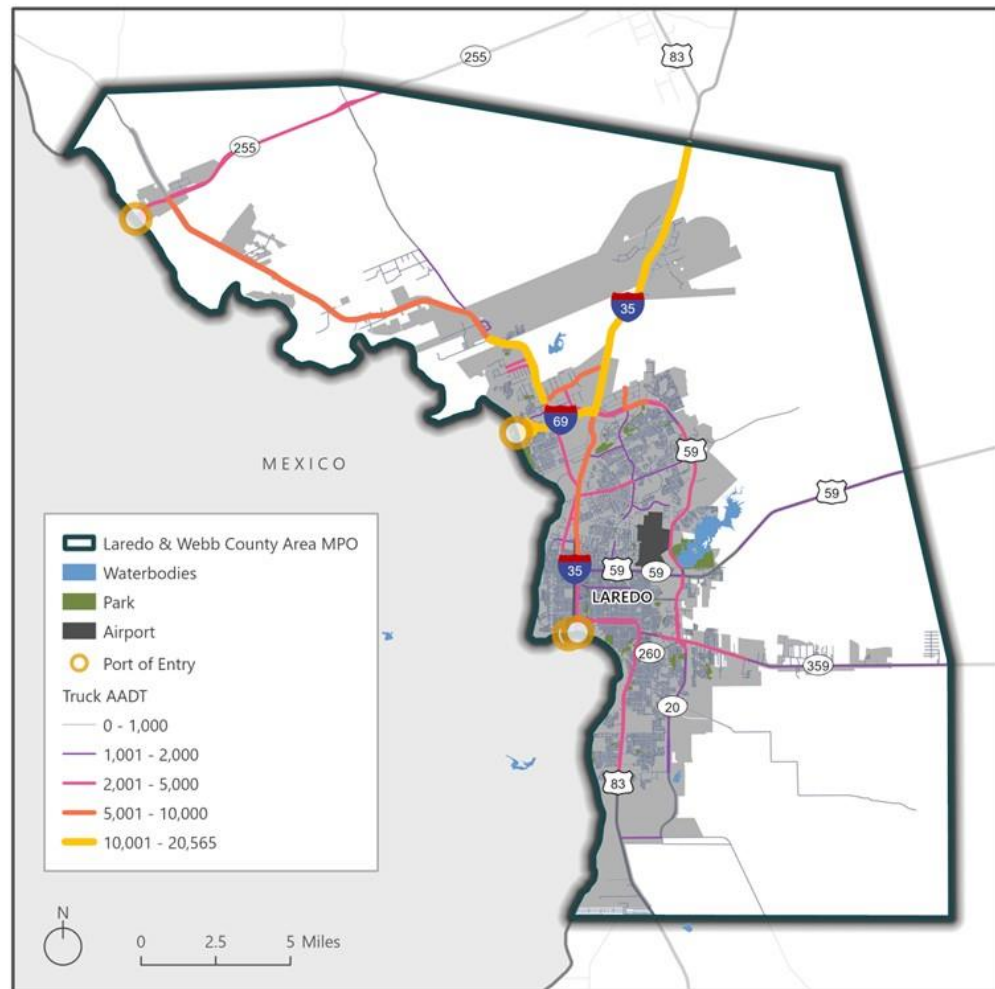
Region	2014	2015	2016	2017	2018	2019	2020	2021	2022	2023
Laredo	1,947,846	2,015,773	2,083,964	2,182,984	2,313,967	2,364,681	2,319,901	2,568,471	2,799,601	2,936,130
Rest of Texas-Mexico Border	3,466,722	3,519,598	3,718,817	3,856,790	3,996,936	4,075,574	4,046,483	4,380,829	4,458,799	4,420,529
Total	5,414,568	5,535,371	5,802,781	6,039,774	6,310,903	6,440,255	6,366,384	6,949,300	7,258,400	7,356,659
Laredo Percent of Total	<b>36%</b>	<b>36%</b>	<b>36%</b>	<b>36%</b>	<b>37%</b>	<b>37%</b>	<b>36%</b>	<b>37%</b>	<b>39%</b>	<b>40%</b>

(Source: U.S. DOT Bureau of Transportation Statistics)



## Truck Traffic

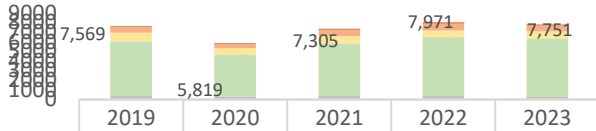
- Truck traffic contributes significantly to the AADT for designated truck routes within the MPA.
- A large amount of the AADT of I-35 and I-69 is linked to truck traffic, reaching a maximum of 20,565.
- These roadways provide access to The World Trade International Bridge, a port of entry exclusively for commercial traffic.



LAREDO & WEBB COUNTY MPO FREIGHT NETWORK

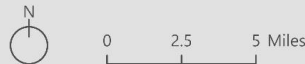
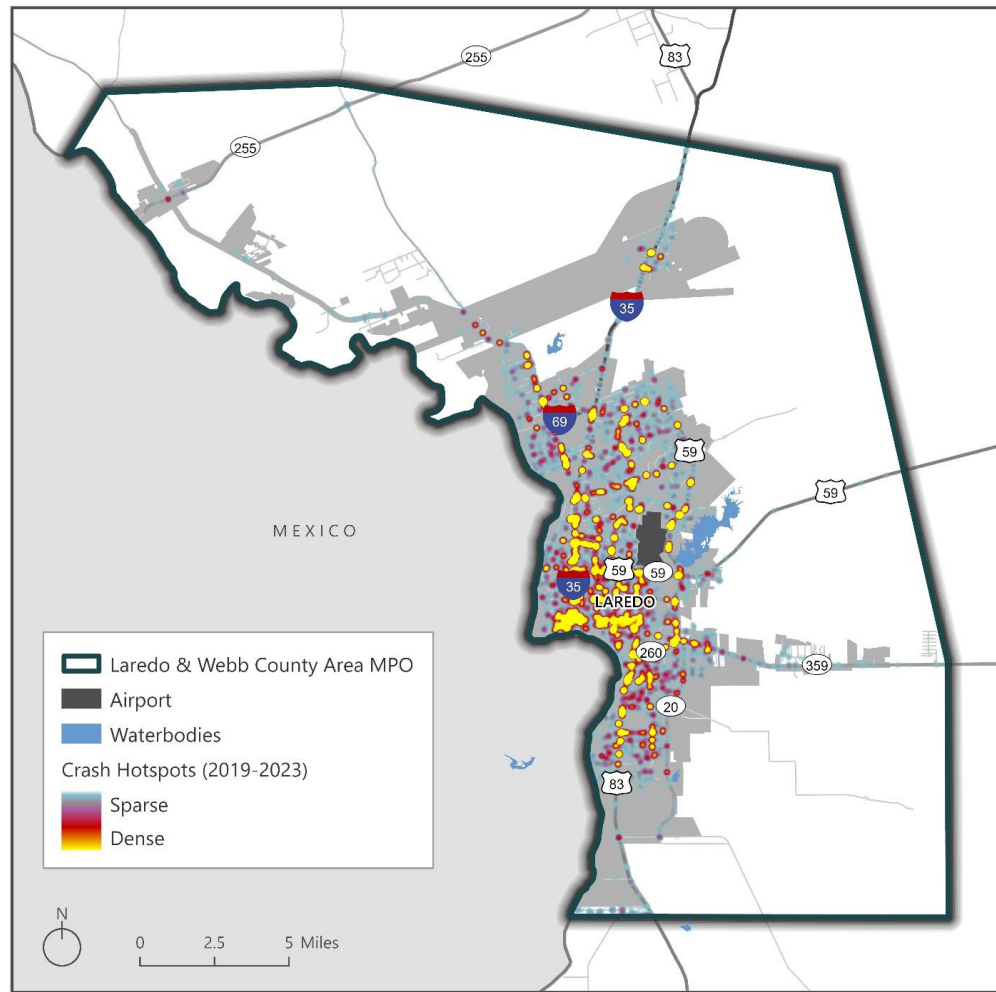


# Safety and Security



	2019	2020	2021	2022	2023
Fatal Injury (K)	13	11	15	22	17
Suspected Serious Injury (A)	61	44	68	79	65
Suspected Minor Injury (B)	570	430	647	701	605
Possible Injury (C)	882	659	739	703	738
Not Injured (N)	5666	4372	5466	6107	6057
Unknown	377	303	370	359	269

- Unknown
- Possible Injury (C)
- Suspected Serious Injury (A)
- Not Injured (N)
- Suspected Minor Injury (B)
- Fatal Injury (K)

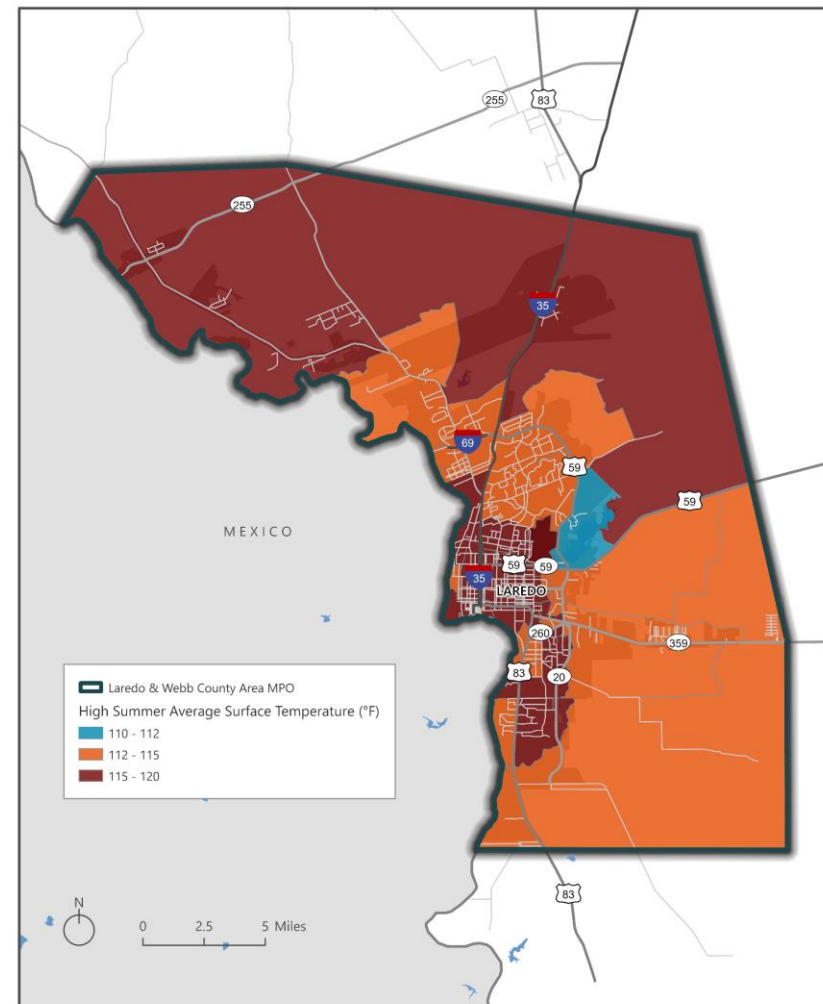


CRASH HOTSPOTS (2019-2023)



## Resiliency

- Planning Goal: Improve the resiliency and reliability of the transportation system and reduce or mitigate stormwater impacts of surface transportation.
- As part of the MTP development, analyzing transportation system vulnerabilities to a variety of extreme weather events, including high surface temperature events.

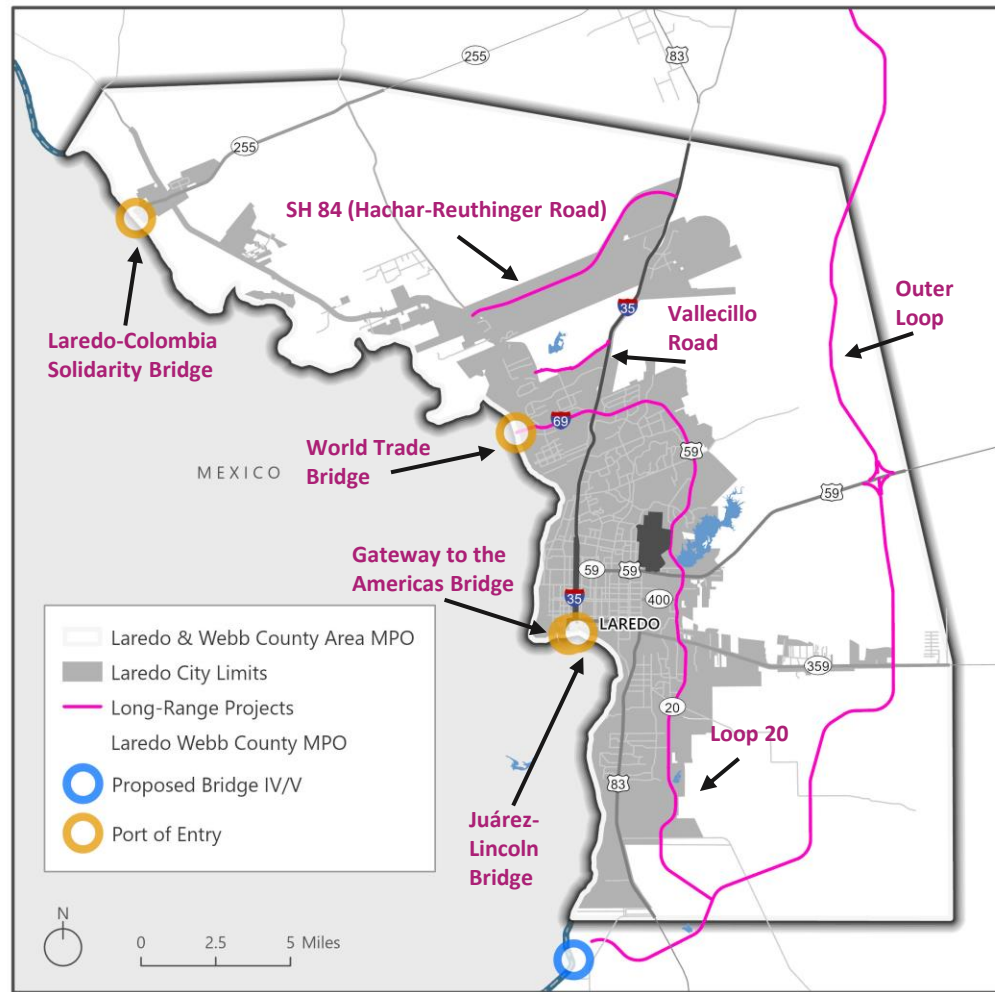


HIGH SUMMER AVERAGE SURFACE TEMPERATURES



## Select MPO and TxDOT Projects

- SH 84 and Vallecillo Road will connect FM 1472 and I-35 which will improve connectivity and mobility between the World Trade Bridge and I-35 (future I-27 Corridor)
- LWCAMPO's FY 2025-2028 Transportation Improvement Program (TIP) funding for highway (non-transit) projects is **\$597,004,758**. The projects in the TIP were selected with the goal of improving safety, enhancing mobility, and relieving congestion.



An aerial photograph of a city, likely Los Angeles, with a dense urban landscape. The image is overlaid with a semi-transparent purple filter. In the center, the text "Thank you!" is written in a large, white, sans-serif font.

**Thank you!**



September 19, 2024

# Connecting Texas 2050

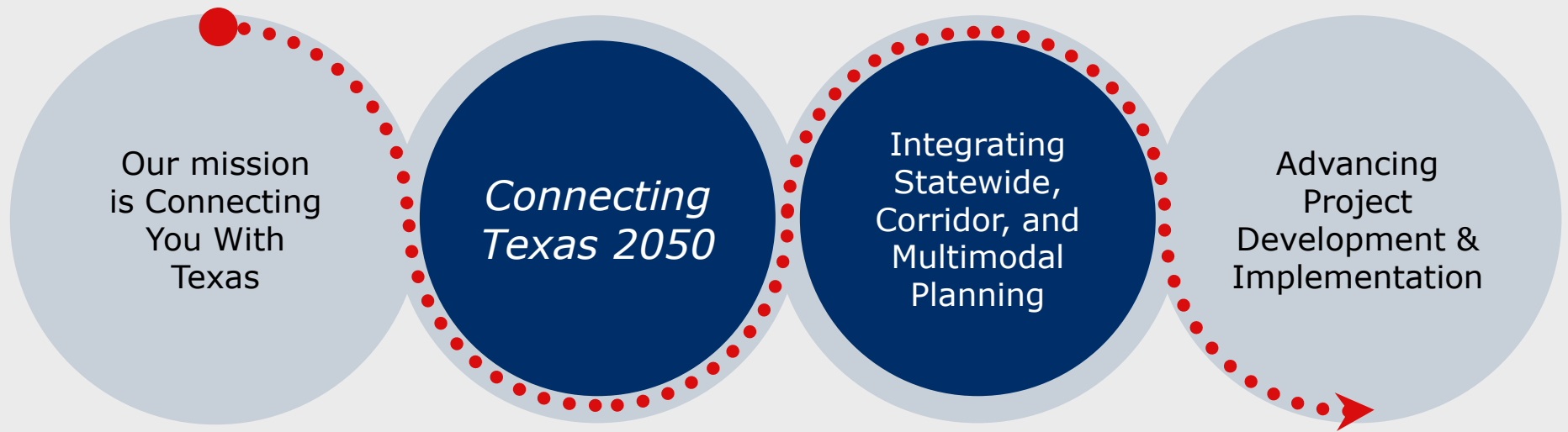
TxDOT's New, Visionary Statewide Transportation Plan

Giacomo Yaquinto, Statewide Planning Branch Manager



# Transportation Planning at TxDOT

*for the safe and efficient multimodal movement of people and goods*



*The Statewide Long-Range Transportation Plan is the embodiment of the TxDOT mission.*

# Connecting Texas 2050 – Cornerstone Planning Document



## CONNECTING TEXAS 2050 Statewide Long-Range Transportation Plan

### Texas Multimodal People Movement Plans

- Statewide Active Transportation Plan\*
- Statewide Multimodal Transit Plan\*



### Texas Multimodal Goods Movement Plans

- Texas Freight Mobility Plan
- Truck Parking Plans
- Freight Network Tech/Ops Plan
- Texas Port Mission Plan

### People and Goods Cross-Cutting Plans

- Texas EV Infrastructure Plan
- Transportation Asset Management Plan
- Texas Airport System Plan
- Statewide Resiliency Plan\*
- Connected / Autonomous Transportation Plan
- TX-MX Border Transportation Master Plan
- Texas Statewide Rail Plan
- Carbon Reduction Strategy \*
- Metropolitan Transportation Plans (MTPs)
- Texas Triangle Advanced Mobility Plan
- Enterprise Technology Plan\*

#### TxDOT Advisory Committees

- Texas Freight Advisory Committee
- Bike and Ped Advisory Committee
- Border Trade Advisory Committee
- Port Authority Advisory Committee
- I-27 Advisory Committee
- Aviation Advisory Committee
- Public Transportation Advisory Committee
- CAV Taskforce

#### Stakeholder and Public Engagement

- TxDOT Administration
- Transportation Partners
- TxDOT Divisions
- Public
- TxDOT Districts
- Other stakeholders
- MPOs and RPOs
- Statistically valid survey

# VISION STATEMENT

Create an innovative multimodal transportation system that safely and efficiently moves people and freight and supports future growth.

## Performance



### Safety

*Plan, build, and maintain a safe and secure transportation system for all users.*



### Preservation

*Maintain and preserve transportation infrastructure and resources to achieve a state of good repair and mitigate asset deterioration.*



### Mobility

*Address congestion by improving efficiency, resilience, and reliability.*

## Strategic



### Connectivity

*Improve multimodal and intermodal connectivity at the local, regional, statewide, national, and international level.*



### Economic Vitality

*Develop transportation systems that support the movement of people and goods to enhance quality of life and promote personal and statewide economic growth.*



### Stewardship

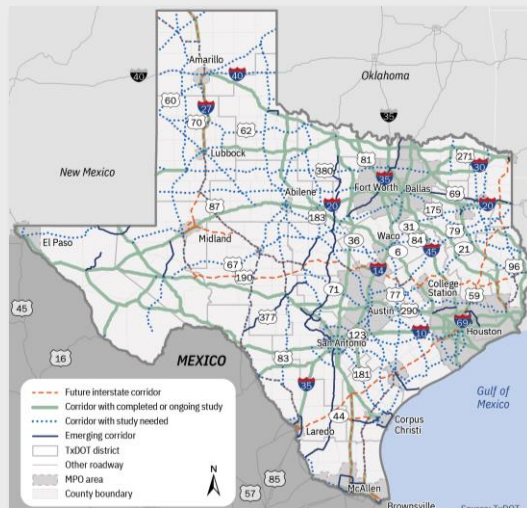
*Continue the responsible and efficient use of federal, state, and local fiscal and natural resources.*

## Strategy Themes

- Strengthen **safety and resilience** of the state transportation system
- Expand the use of transportation **technology and innovation** to enhance system performance
- Promote **freight infrastructure and intermodal connectivity** for a prosperous future
- Optimize investment in the **multimodal transportation system** to accommodate future growth
- Enhance **cross-border** connectivity and operations
- Support workforce connections to jobs and develop and retain a skilled transportation **workforce to meet the future needs**
- **Adapt the long-term planning process** to better address evolving transportation challenges and leverage opportunities
- **Enhance public and stakeholder collaboration and engagement** to achieve the state's transportation vision and goals

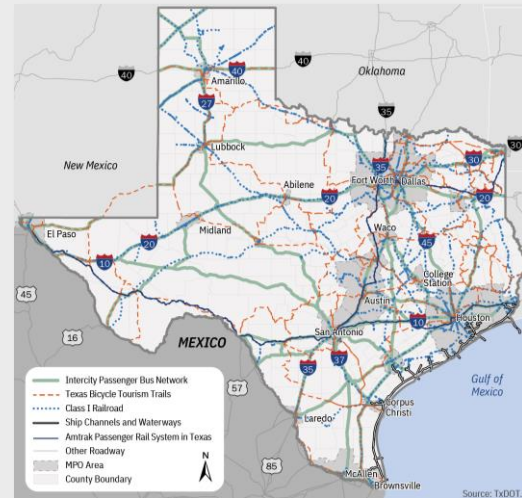
# Leverage Corridors of Statewide Significance

- Connect different regions and facilitate the movement of people and goods across Texas
- Reviewed and defined with input from each District
  - Future interstate corridors
  - Completed or on-going studies
  - Corridors with a study need
  - Emerging corridors

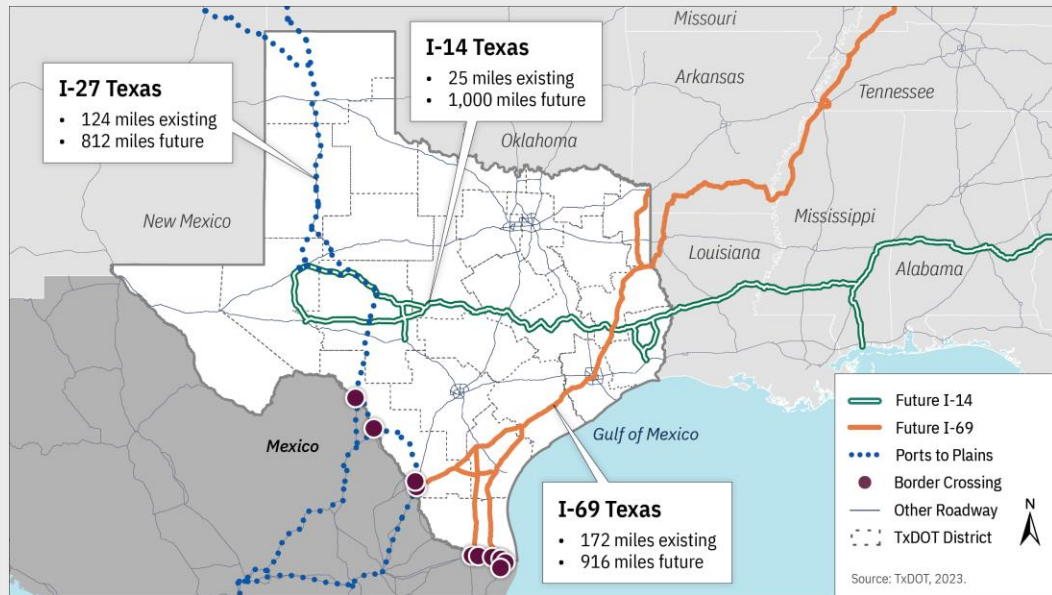


Roadway Corridors

## Multimodal Corridors



# Future Interstates



## Estimated I-27 Investment

Assumes high-level planning cost estimates (2023) to upgrade the I-27 corridor to interstate standards. Consistent with the SLRTP statewide planning construction cost estimates.

Improvement	Mileage	Planning Cost per Mile (low-high)	Total Cost (low-high)
Existing two-lane or super two to four-lane freeway (interstate standards)	500.2	\$51M to \$61M	\$25.5B to \$30.5B
Existing four-lane divided to four-lane freeway (interstate standards)	302.5	\$67M to \$81M	\$20.3B to \$24.5B
<b>Total</b>			<b>\$45.8B to \$55.0B</b>

## Overview of Short-term Planning Activities

- Develop district-level or regional transportation plans
- On-going stakeholder engagement
- Continue to optimize performance-based planning
- Expand scenario planning to enhance future planning
- Leverage Corridors of Statewide Significance





# Questions



September 19, 2024



September 19, 2024

## Closing Remarks

Honorable Brenda Gunter, Mayor, City of San Angelo, I-27 Advisory Committee Chair

Lorena Echeverria de Misi, P.E., Corridor Planning Branch Manager, Transportation Planning and Programming Division, TxDOT