



# SH 360 PROJECT

ALTERNATIVE DELIVERY PROGRAM

DEVELOPER: Lane-Abrams, JV



## SUCCESS STORY



### PARTNERING

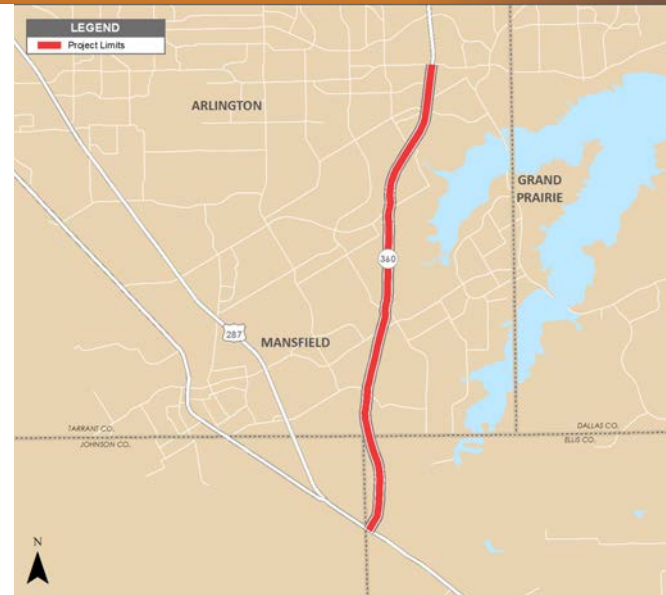
The project was developed through a public-public partnership between TxDOT, the North Texas Tollway Authority (NTTA), and the North Central Texas Council of Governments (NCTCOG) enabling TxDOT to deliver more scope and infrastructure to help the development of the surrounding communities and increase safety.



### INNOVATION

Opportunities for innovation through the design-build process included:

- Improving overall constructibility.
- Increased reuse of existing pavement.
- Increased level of service to existing frontage road and cross streets.
- Improved traffic control phasing by realigning and modifying the vertical grade of the frontage road.
- Implementing cost and time saving design optimizations such as revising the roadway profile of the SH 360 mainlanes and the construction limits at the northbound frontage road and Broad Street.



## PROJECT DESCRIPTION

**FROM:** E. Sublett Road/Camp Wisdom Road

**TO:** US 287

- Intersection enhancements including grade-separation of the US 287 mainlanes with the SH 360 frontage roads.
- Intersection enhancements including grade-separation of the US 287 mainlanes with the SH 360 frontage roads.
- Frontage road improvements for continuous non-tolled frontage roads throughout the corridor.

**LANE MILES:**  
90

**TOTAL CONTRACT VALUE**  
\$354 million



SH 360 south toll road

## DESIGN-BUILD EFFICIENCIES

- **Co-location:** Co-location of TxDOT staff and DB Contractor staff through the life of the project resulted in coordination efficiencies enabling decisions to be made in real time and fostered an environment to partner in a time efficient manner.
- **Funding:** TxDOT loaned project funds to NTTA for constructing NTTA components and allowed for revenue sharing from the tolling as well as increased return on the loan. Additional revenues will go to corridor improvements for future projects.
- **Quality assurance testing frequencies** exceeded guide schedule requirements.

## PROJECT DETAIL HIGHLIGHTS

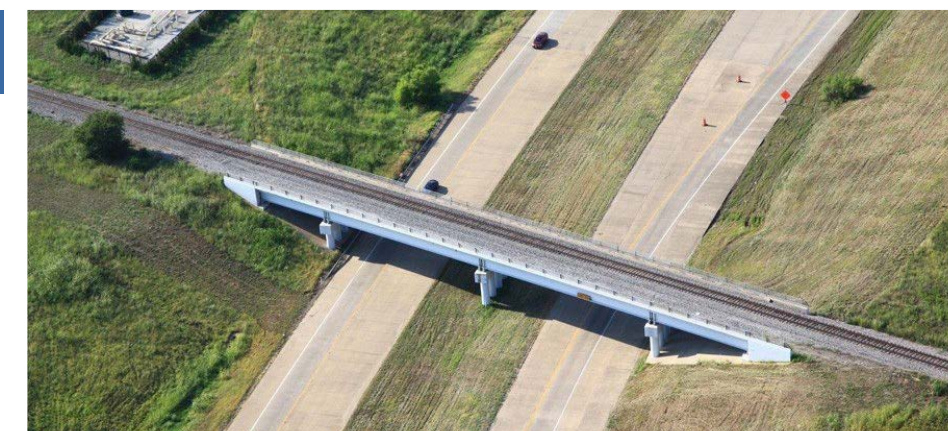
- The SH 360 Project provides needed safety improvements, congestion relief, and economic development benefits to the public.
- The project provides a controlled-access urban tollway that reduces intersection conflicts with local streets and reduces anticipated congestion within the project area, improving traffic flow for local businesses and residents along both the SH 360 frontage roads and on US 287 at SH 360.



SH 360 mainlanes at E. Sublett Road/Camp Wisdom Road

## LESSONS LEARNED

- **Geotechnical investigations:** TxDOT allowed the proposers to conduct their own geotechnical investigations during the procurement which helped ensure better project pricing. No differing site conditions were encountered during implementation of the project.
- **Maintenance Contract:** The comprehensive maintenance agreement and warranty requirements for the project encouraged the DB Contractor to design and construct the project with the highest level of quality since the DB Contractor would potentially have to maintain the project.
- **Ultimate configuration:** Development of an ultimate schematic added value by requiring the DB Contractor to design and construct to allow for the ultimate scope.



Union Pacific Railroad underpass

