



SH 71 at FM 973

### SUCCESS STORY



#### EFFECTIVE STAKEHOLDER COORDINATION

DB Contractor coordinated third-Party utility agreements and utility relocations resulting in cost and time savings by implementing design-build solutions to avoid utility relocations.



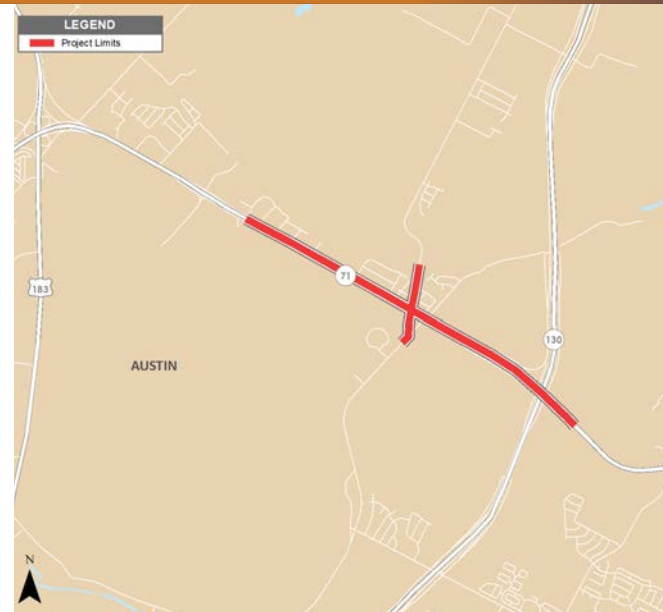
#### STREAMLINED PROCUREMENT

The procurement process to select the DB Contractor was completed in only seven months, from issuance of the Request for Qualifications to Conditional Award, which allowed issuing notice to proceed sooner.



#### IMPROVED IMPLEMENTATION TOOLS

The project featured the introduction of new tools including the use of SharePoint for contract administration and an enhanced testing tracking system.



### PROJECT DESCRIPTION

**FROM:** Presidential Boulevard **TO:** East of SH 130

- 2 new toll lanes (one in each direction) constructed within the median of the existing SH 71 corridor.
- Reconstruction and realignment of FM 973 at the intersection with SH 71.
- Construction of new overpasses at FM 973 and at SH 130.
- Western limit improvements extended to US 183 with shared-use-path, pavement, signing and striping, etc.

**LANE MILES:**  
32

**TOTAL CONTRACT VALUE**  
\$110 million

#### ADP PROGRAM BENEFITS

- Enhanced non-compliance event system to help enforce contract requirements.
- Developed a training program to help overcome inexperience in the design-build delivery method.
- Improved requirements for the Design Submittal Review Process and the Design Workshop to set expectations of the design process.
- Enhanced quality management requirements for the design and construction activities.
- Improved contract requirements to eliminate ambiguity and inconsistencies.

#### PROJECT PURPOSE

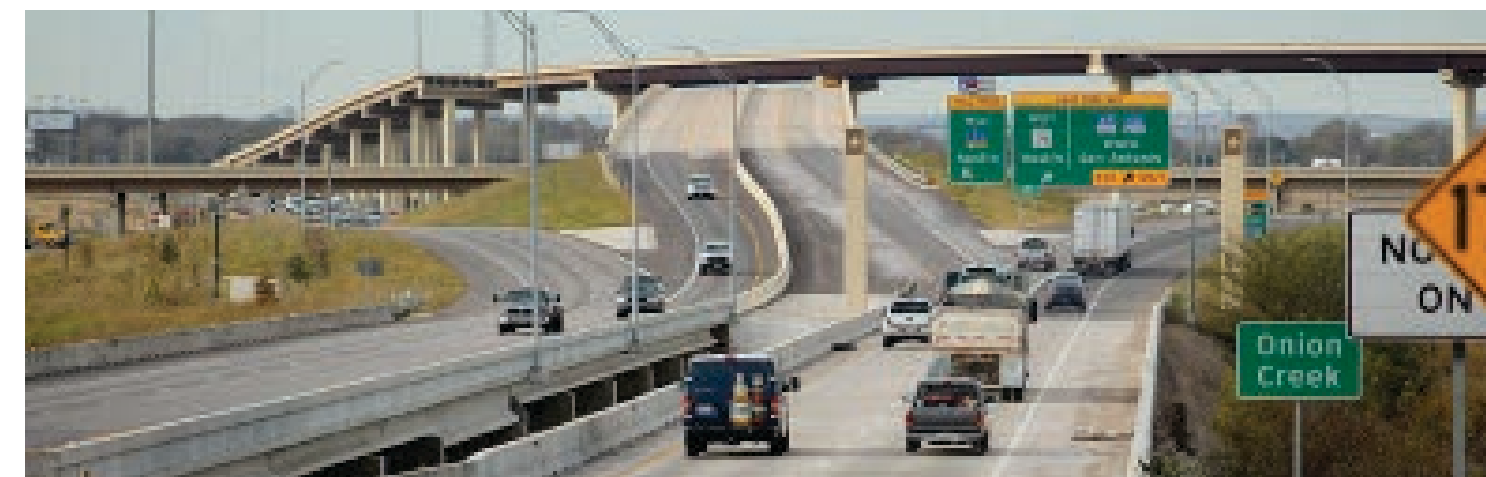
- Reduce congestion and improve travel time for all motorists using SH 71.
- Give drivers the choice of using tolled express lanes to bypass traffic lights at FM 973 and SH 130.
- Improve safety.
- Increase economic growth.
- Provide greater access to Austin International Bergstrom Airport.

#### LESSONS LEARNED

- Provide better specification needed for “Effective PI” requirements for pavement materials.
- Project size, scope and complexity should provide sufficient opportunities for innovation.
- Early start of construction package contents should be agreed upon by both parties.
- Better definition needed of key personnel roles and responsibilities.
- Need better control over replacement of key personnel.

### STAKEHOLDER QUOTES

“ ” **Senator Kirk Watson, D-Austin:** “Now what we’re doing is opening up SH 130 in a way that is very meaningful,” Watson said. “People coming from the north—Waco, Georgetown—people coming from the south—Seguin—they’ll be able to get off SH 130 and go to Austin-Bergstrom International Airport or on into Austin uninterrupted by traffic.”



Westbound SH 71 at SH 130

