

Texas Department of Transportation
BOOK 2 – TECHNICAL PROVISIONS
FOR
US 181 HARBOR BRIDGE PROJECT
DESIGN-BUILD PROJECT

ATTACHMENT 7-1
PORT AUTHORITY BUILDINGS /
IMPROVEMENTS TO BE DEMOLISHED

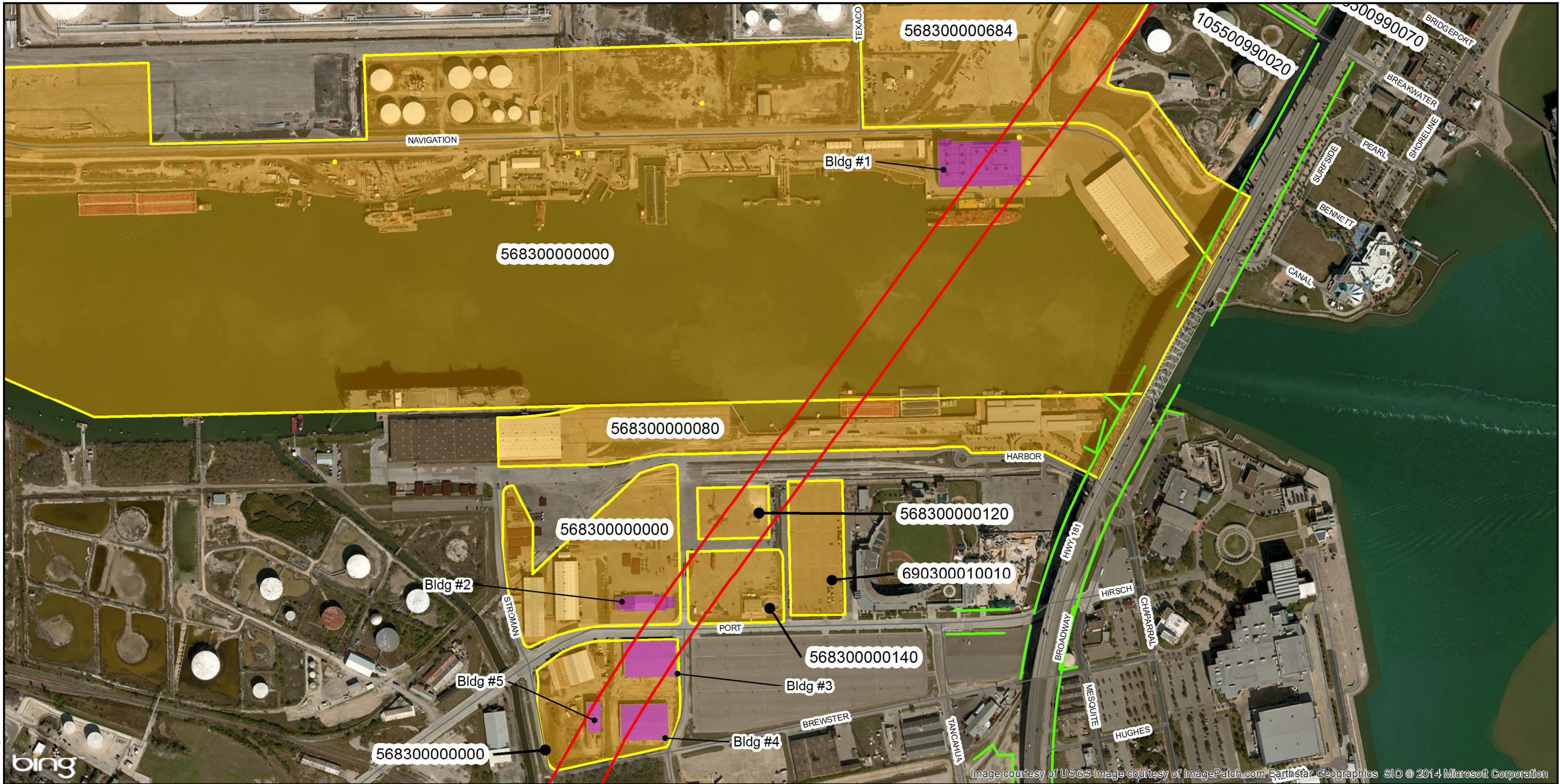
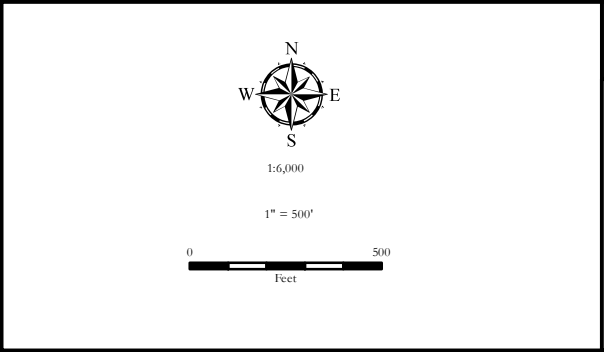


Image courtesy of USGS Image courtesy of ImagePatch.com EarthStar Geographics SIO © 2014 Microsoft Corporation

Data Source
Parcels: TxDOT
ROW: TxDOT
Structure Data: URS Corporation

Legend
EXIST ROW
RED ROW
Buildings to be Demolished
Port Property With Approved ROE Access



Attachment 7 - 1

Harbor Bridge

Port Authority Buildings/Improvements to be Demolished

09/26/2014

DISCLAIMER: This map was generated by HNTB Corporation using GIS (Geographic Information Systems) software. No claims are made to the accuracy or completeness of the information shown herein nor to its suitability for a particular use. The scale and location of all mapped data are approximate.