

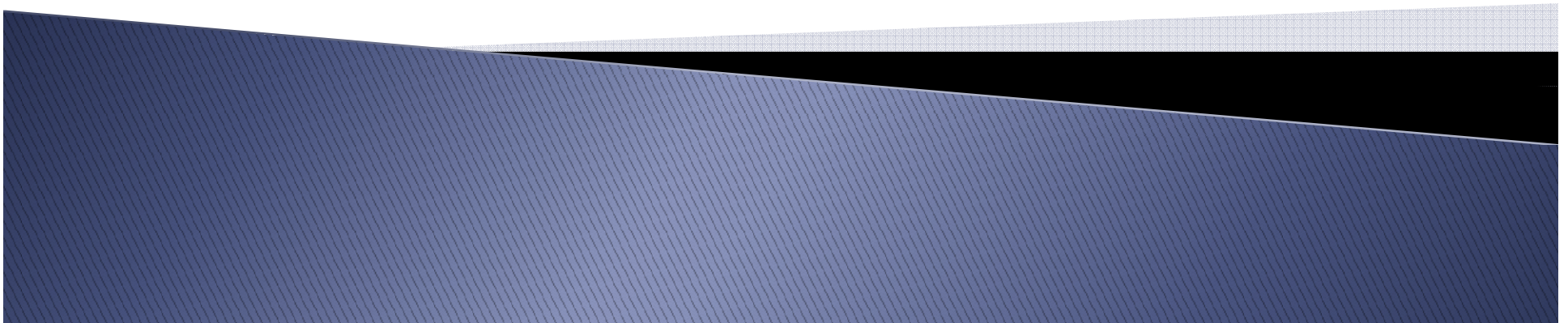


# **Loop 1604 Western Extension**

## **Design-Build Pre-QS Workshop**

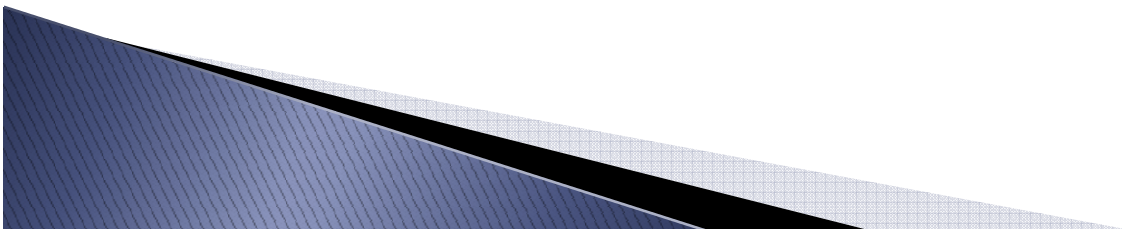
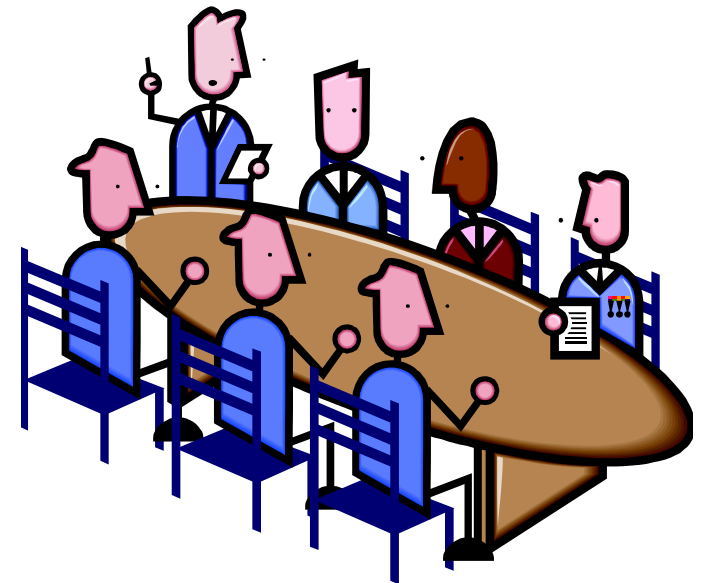
**Frank P. Holzmann, P.E.  
TxDOT, CDA Program Director  
South Central Texas Strategic Project Office**

**January 24, 2013**



# Agenda

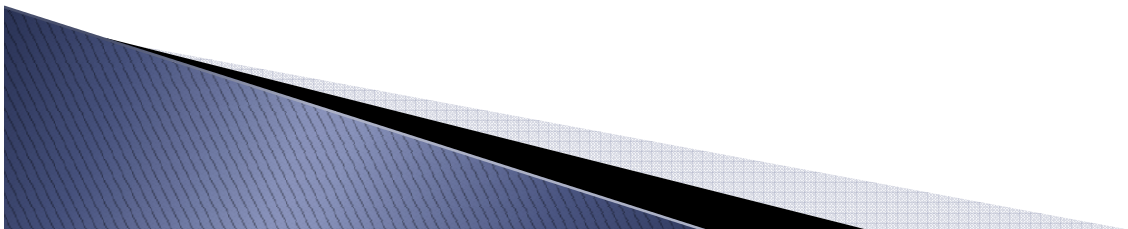
- ▶ **Project Description**
- ▶ **Work Underway**
- ▶ **RFQ**
- ▶ **Responsibilities**



# Project Description

## ▶ **Base Project**

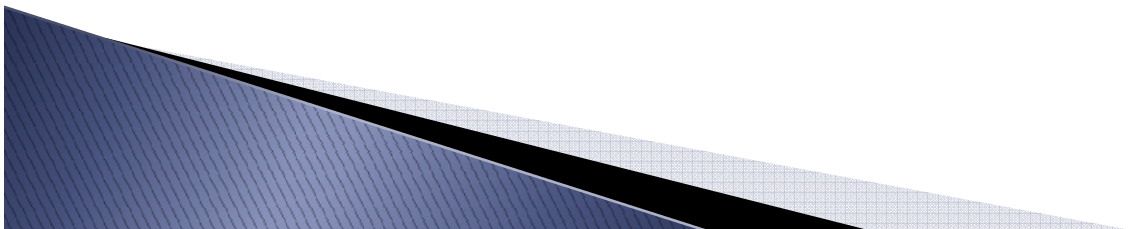
- **Loop 1604 Western Extension**
- **Four-lane, non-tolled Expressway**
- **FM 471 (Culebra Rd) to SH 16 (Bandera Rd)**
- **4.7 miles**
- **Design-Build project**



# Project Description

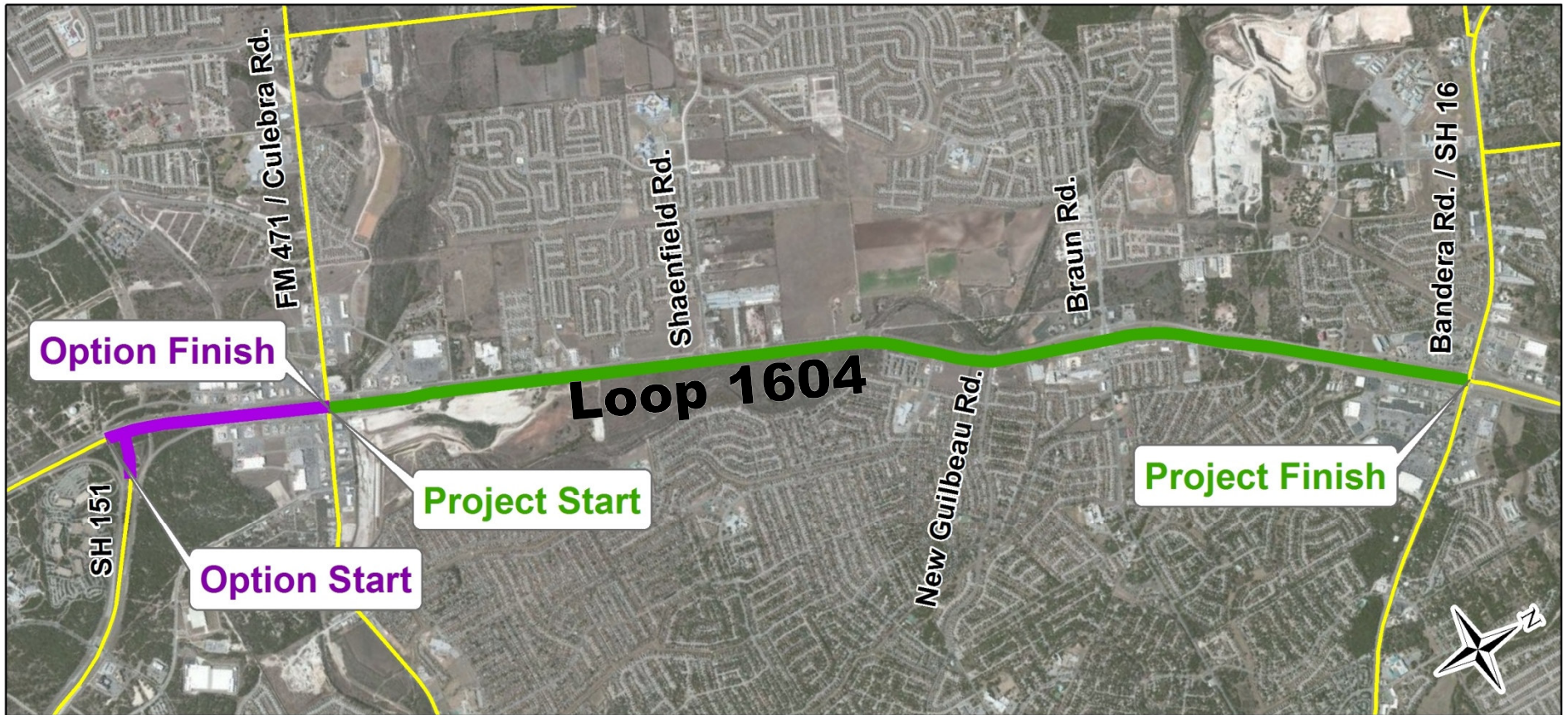
## ▶ Option

- **Loop 1604/SH 151**
- **Grade separation**
- **Interchange improvements**



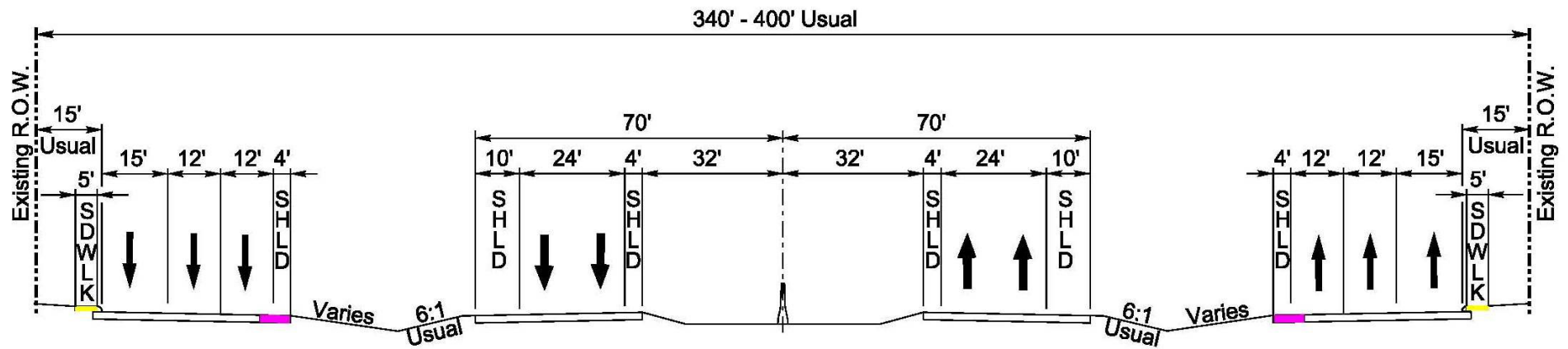


# Project Description



**Proposed Project**

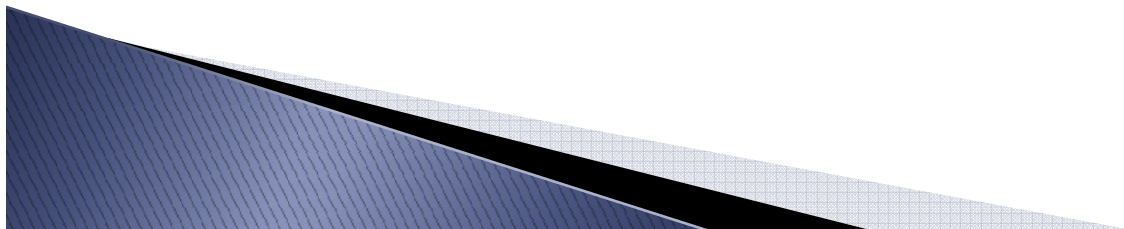
# Project Description



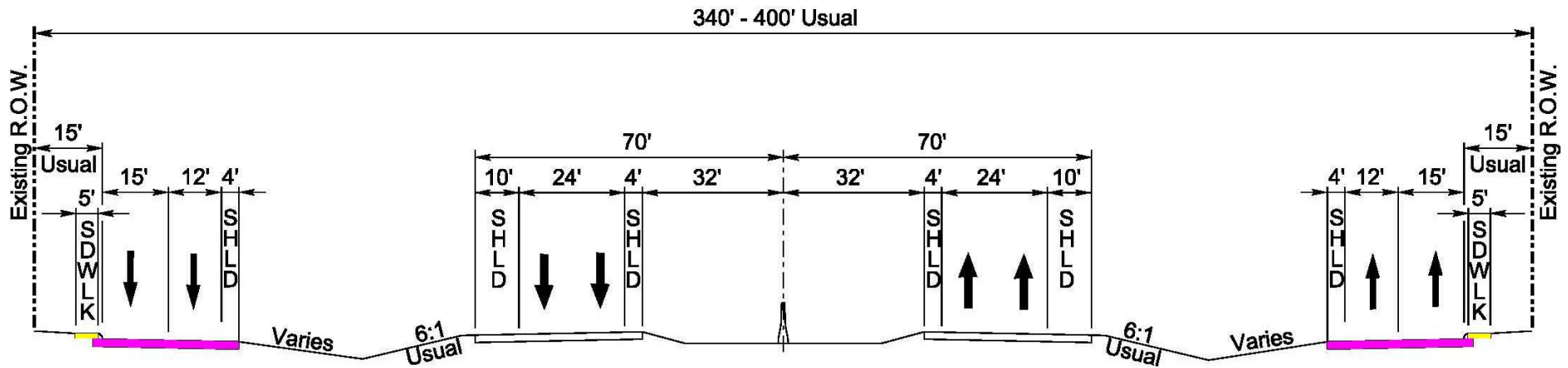
## SH 16 to 1.2 Miles South of SH 16

### Typical Section

Legend	
	Main Lanes Construction
	Frontage Road Construction
	Sidewalks
	Existing Right-of-Way Line



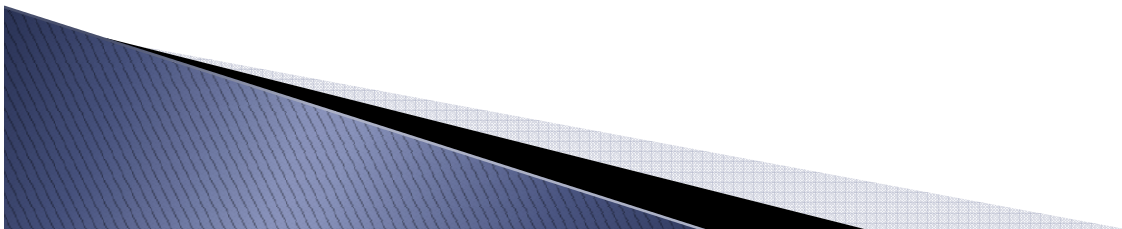
# Project Description



## 1.2 Miles South of SH 16 to FM 471

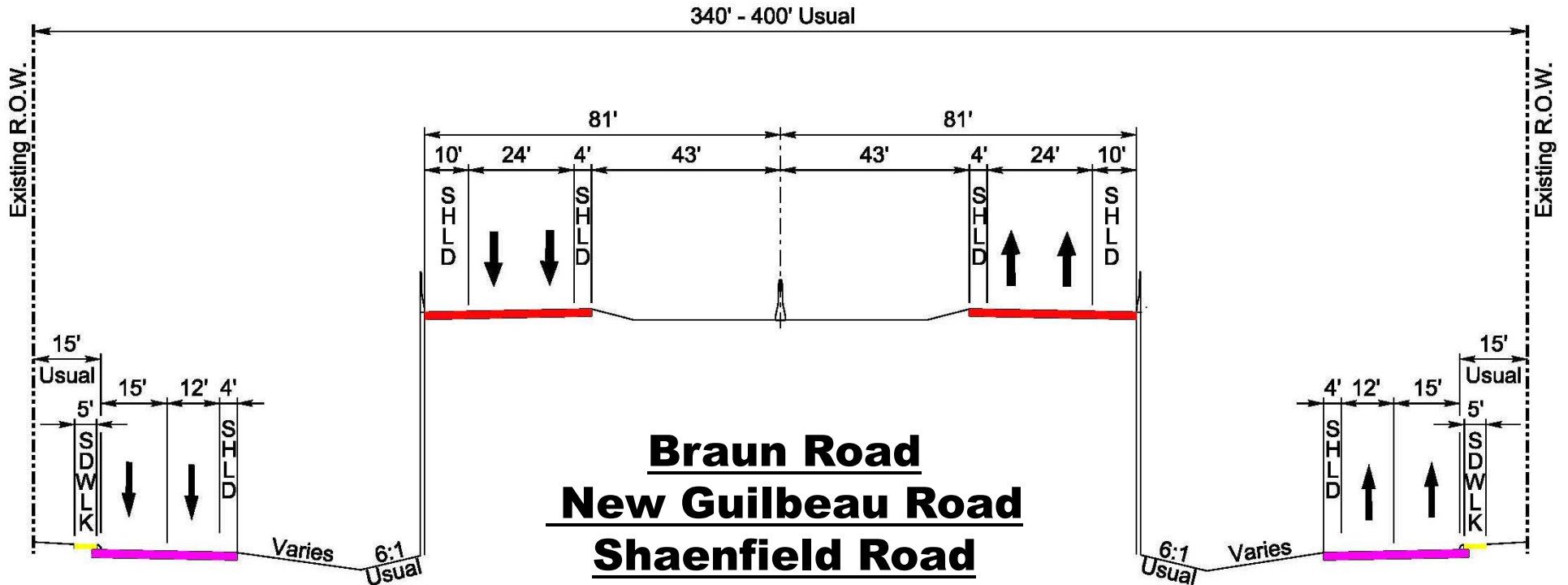
### Typical Section

Legend	
	Main Lanes Construction
	Frontage Road Construction
	Sidewalks
	Existing Right-of-Way Line





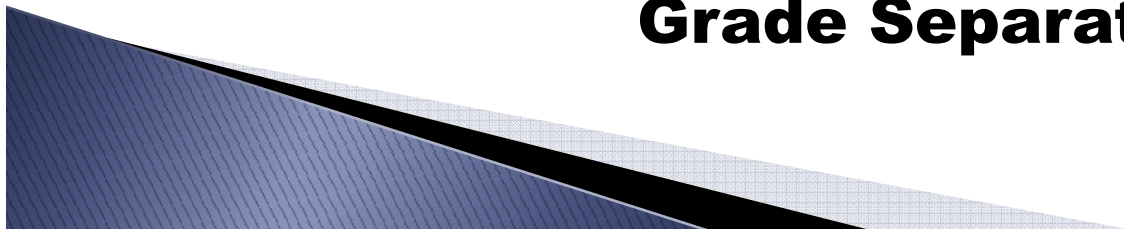
# Project Description



**Braun Road**  
**New Guilbeau Road**  
**Shaenfield Road**

**Typical Section**  
**Grade Separation**

Legend	
	Main Lanes Construction
	Frontage Road Construction
	Sidewalks
	Existing Right-of-Way Line



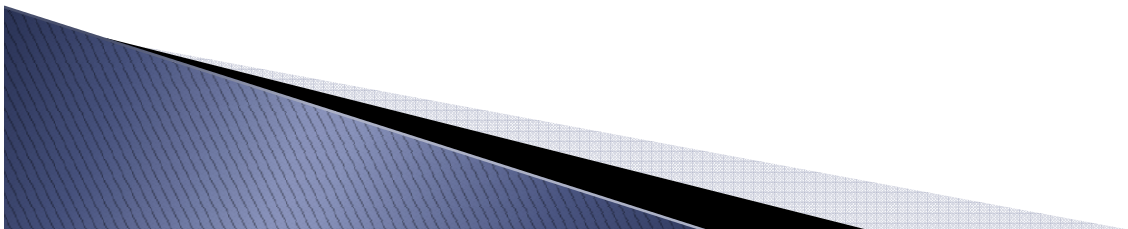


# Project Description

## ▶ **Capital Maintenance Agreement**

### ◦ **Maintenance Elements**

- **Embankment and cut slopes**
- **Drainage and storm sewer systems, including culverts, pipes, inlets, and manholes**
- **Pavement structure**
- **Bridges**
- **Retaining walls**
- **Overhead sign structures**

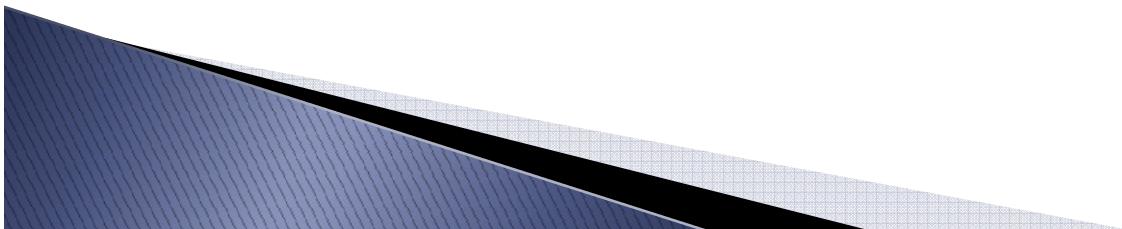


# Project Description

## ▶ **Capital Maintenance Agreement**

### ◦ **Term**

- **Initial mandatory five-year term**
- **Two optional five-year terms**
- **Maximum term of the CMA is 15 years**



# Work Underway

## ▶ **Environmental Assessment**

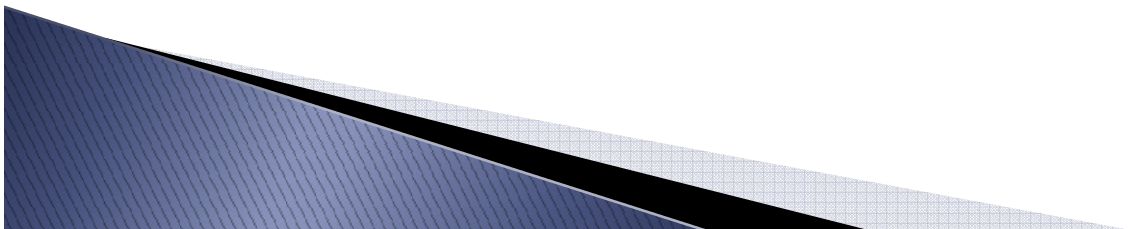
- **Base Project - State EA Summer 2013**
- **Option – TBD**

## ▶ **Schematic Design**

- **Base Project – Preliminary Schematic in RID**
- **Option – Concept Drawing in RID**

## ▶ **Subsurface Utility Engineering**

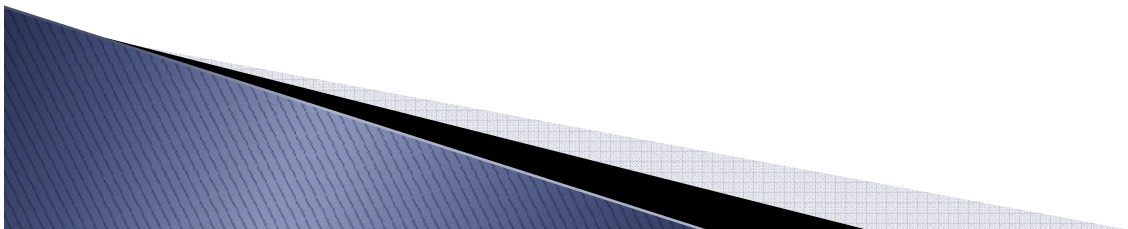
- **Provided with RFP**



# RFQ

## ▶ **Qualifications and Experience**

- **Experience on Comparable Projects**
- **Management Team & Key Personnel**
- **Likelihood of Success**
- **Success on Comparable Projects**
- **Capital Maintenance on Comparable Projects**
- **DBE participation**





# RFQ

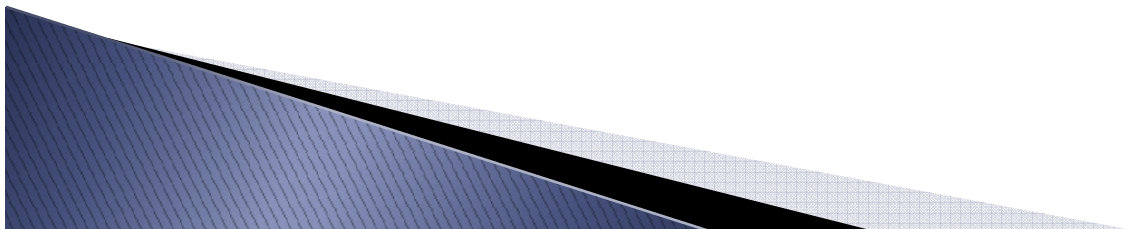
## ▶ **Statement of Technical Approach**

- **Understanding of the Scope**
- **Understanding of Risks**



### **NOTE TO PROPOSERS**

**Proposers are not required to address Option work in Statement of Technical Approach and will not be evaluated with respect to such work.**



# RFQ

## ► Schedule

- **Issued RFQ** **January 18, 2013**
- **Pre-QS Workshop** **January 24, 2013**
- **Deadline for Questions** **February 1, 2013**
- **QS Due Date** **February 15, 2013**  
**by 3PM CST**



# RFQ

## ▶ **Delivering QS Submittals**

- **Proposers are responsible for ensuring QS submittals are delivered by hand or courier on Wednesday, February 15, 2013 by 3:00 p.m. to:**

**Attn: Frank Holzmann, P.E.**

**Texas Department of Transportation**

**7600 Chevy Chase Drive, Building 2, Suite 400**

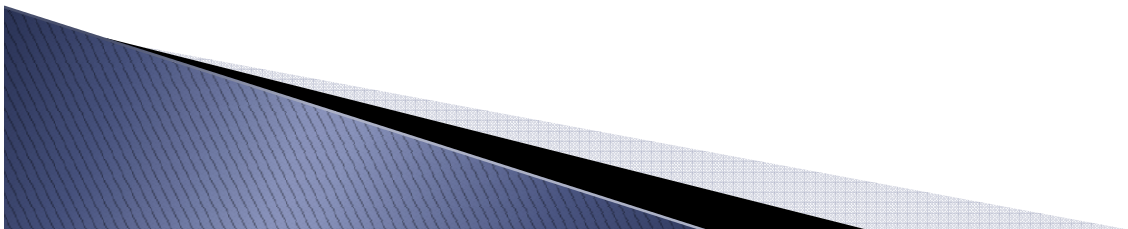
**Austin, Texas 78752**

- **Any QSs received after the above date and time will be rejected and returned to the sending party unopened.**
- 

# Responsibilities

## ▶ Proposer

- **Monitor the Project Website.**
- **Proposers are advised that responses to questions posed at this workshop are considered to be on an informational basis and are not binding on TxDOT.**
- **Written questions and corresponding responses will be posted on the Project Website.**



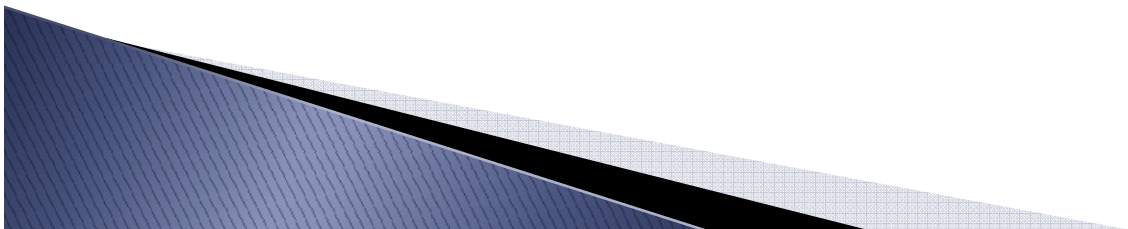


# Responsibilities

**The process for official questions and answers remains as provided in the RFQ.**

**E-mail address:**

**[TxDOT-SAT-PPP-LP1604@txdot.gov](mailto:TxDOT-SAT-PPP-LP1604@txdot.gov)**

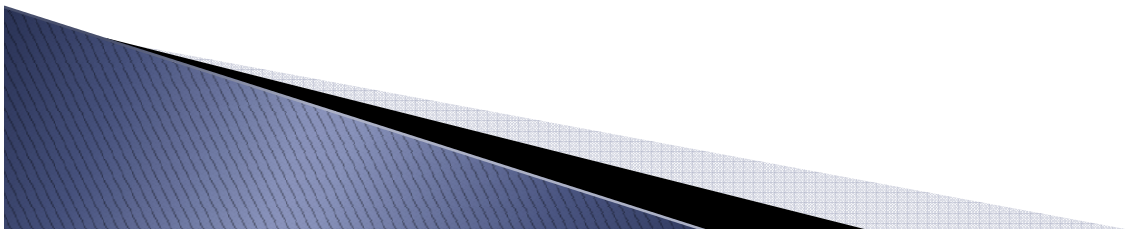


# Responsibilities

## ▶ **TxDOT**

- **Post on Project Website**
  - **Addenda to RFQ**
  - **Responses to Questions**
  - **Requests for Clarification**
- **Project website**

[www.txdot.gov/insidetxdot/projects/studies/san-antonio/loop1604.html](http://www.txdot.gov/insidetxdot/projects/studies/san-antonio/loop1604.html)



**Questions?**

