



TEXAS DEPARTMENT OF TRANSPORTATION



LOOP 375

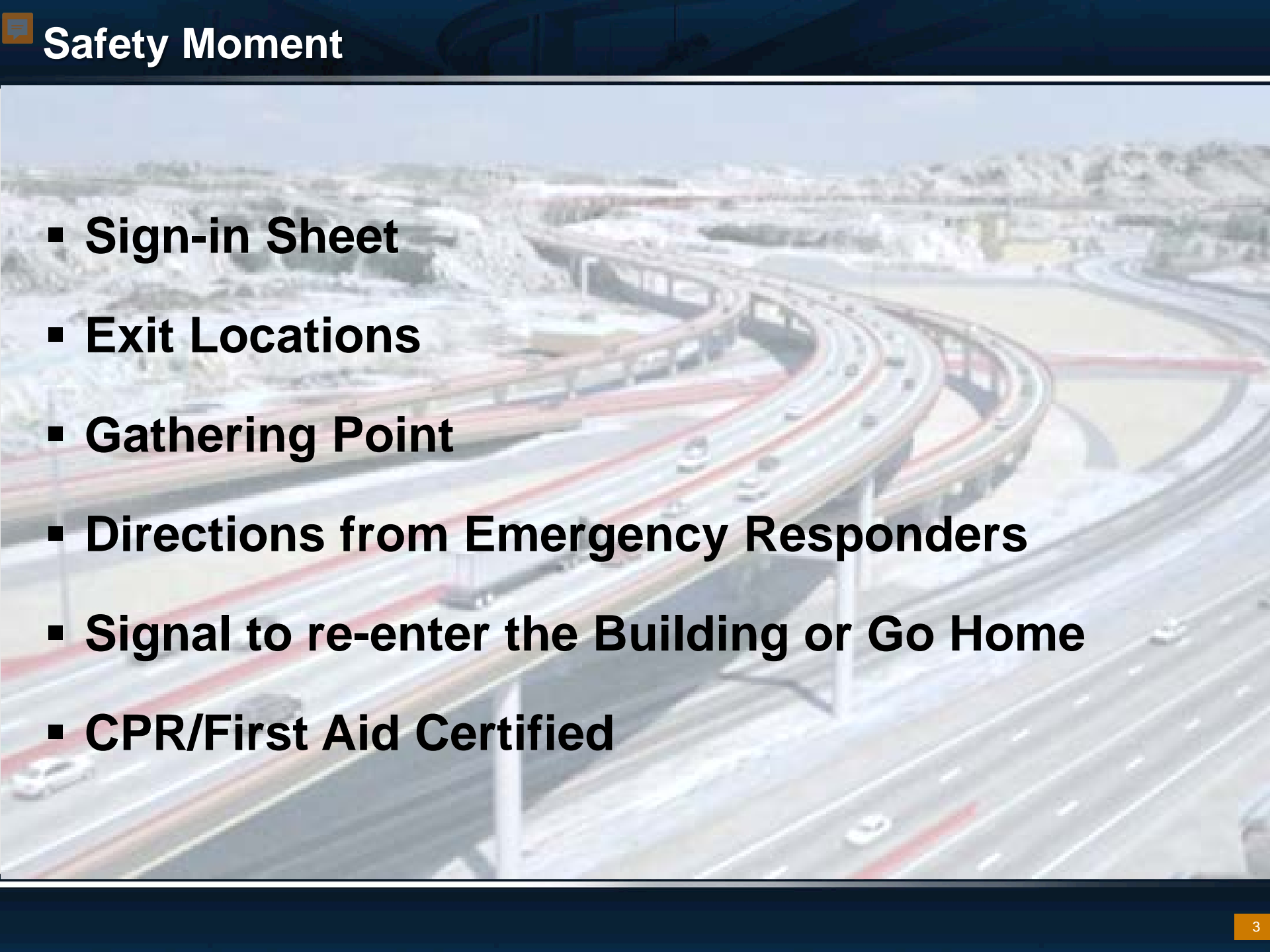
BORDER HIGHWAY WEST EXTENSION

Design-Build Pre-QS Workshop

Frank P. Holzmann, P.E.
TxDOT, CDA Program Director
South Central Texas Strategic Project Office

**Texas Department of Transportation
Loop 375 – Border Highway West Extension Project
Pre-QS Workshop**



- 
- **Sign-in Sheet**
 - **Exit Locations**
 - **Gathering Point**
 - **Directions from Emergency Responders**
 - **Signal to re-enter the Building or Go Home**
 - **CPR/First Aid Certified**



Agenda

1	The Project Description	5-8
2	Scope of Work	9-10
3	On-Going Investigations	11
4	Third Party Items	12
5	Funding	13
6	The Submittal	14-16
7	Conclusion	17

Please Hold Questions Until The End

■ Loop 375

Border Highway West Extension

- Four-lane, controlled access facility
- Racetrack Drive near Doniphan Road and New Mexico 273 to one mile east of Park Street
- Approximately 7 miles of elevated structure and 2 miles at-grade
- Design-Build-Maintain contract under TxDOT CDA Authority
- State FEIS, ROD received June 7
- Purpose of the project
 - Alternate route for I-10
 - Improvements to system capacity
 - Regional system linkage

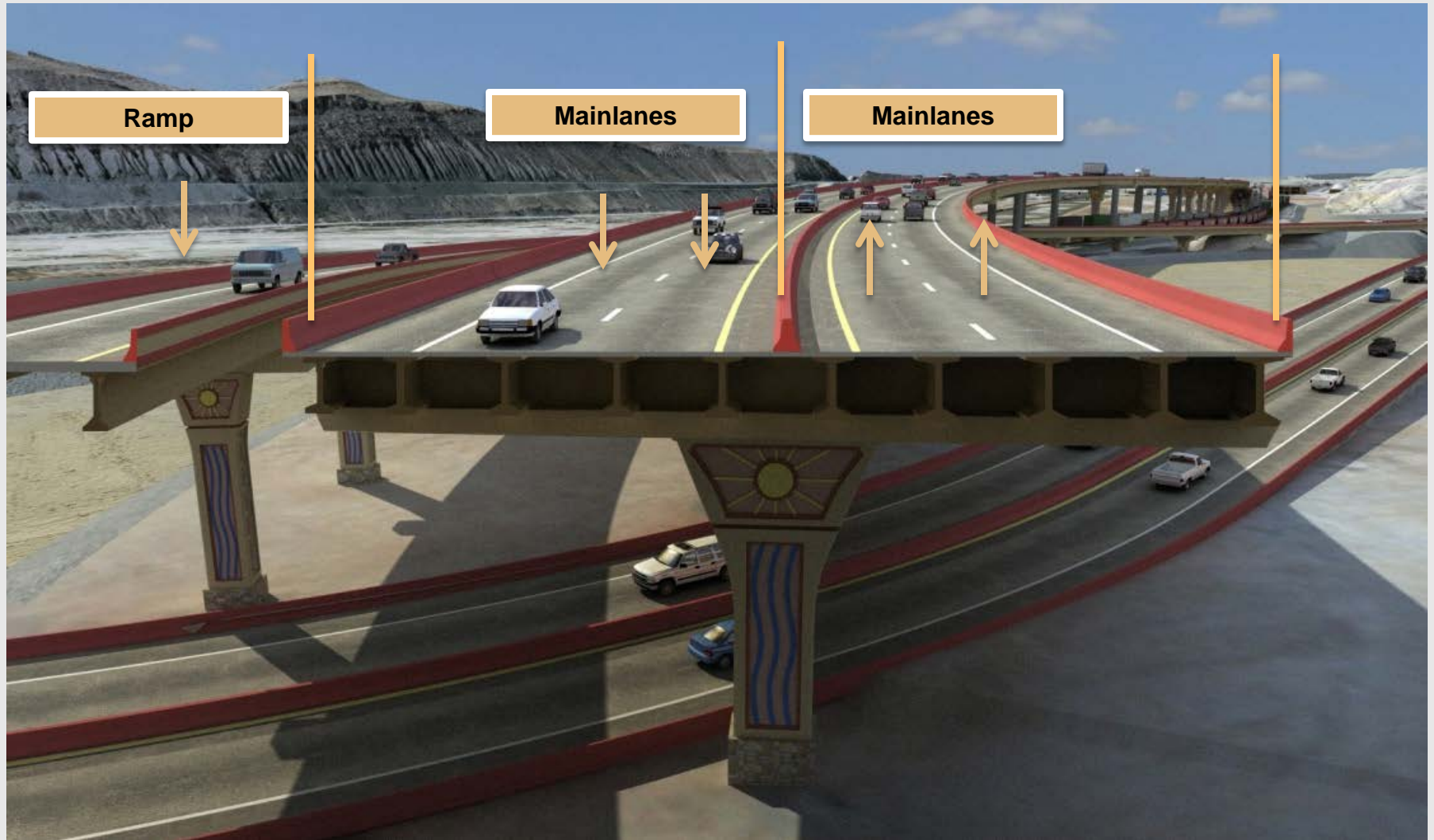


The Project Description



Project Location Map

The Project Description



Typical Section

The Project Description



Typical Section

■ Design-Build-Maintain Contract

- Design and construction of elevated 4-lane facility
- Interchanges at Executive Center Blvd., Spur 1966 and Coles St. Ramps
- Ancillary streets
- Stormwater ponds
- Third party items
- Preparation for ROW acquisition

■ Maintenance

- Mandatory 15-year term
- ROW to ROW
- Considering preventative, routine and capital
- Incident management

■ Right of Way

- Phase 1 ESAs on all parcels
- Developer responsibility
- Approximately 70 parcels
- Anticipated hazardous materials

■ Operations

- If tolled, conducted by others
- Toll equipment by TxDOT Toll Integrator
- Designation as a toll facility pending



■ Surveying

- Low-level helicopter LiDAR
 - Photogrammetry
 - Ground survey
- Aerial LiDAR base files
 - Preliminary 3D terrain features
 - Preliminary 2D topo file
 - Preliminary Geopak .tin file
 - Transmission line profiles
- Preliminary files posted



- **Subsurface Utility Investigations**
 - Level B SUE, Level A at intersections
 - Preliminary report posted
- **Preliminary ROW Mapping**
 - Preliminary mapping files posted in one week
- **Geotechnical Investigations**
 - Bridge borings at 600' intervals
 - Retaining wall borings at 400' intervals
 - Ground water observation wells (22)
 - Final report expected October 7

- **US Customs and Border Protection**
 - Relocation of security towers, cameras and lighting
 - Coordination with CBP and specialty contractors
- **Railroads**
 - UP mainline and inspection track relocation
 - UP and BNSF crossings
 - Cross-over relocation
- **International Boundary and Water Commission**
 - Licensing outfalls to the Rio Grande River
 - Stormwater ponds

Third Party Items

■ El Paso Electric

- Transmission line relocation
 - CEMEX property
 - Along I-10
- Design expected to complete by December 2013
- Lead time for equipment is 26 weeks
- Anticipate start of construction August 2014
- Interruption of service October 2014 to April 2015





- State Funds Only
- Extended Maximum Payment Curve
 - Up to 5 years after substantial complete date



Qualifications & Experience

- Experience on Comparable Projects
- Management Team & Key Personnel
- Likelihood of Success
- Success on Comparable Projects
- Maintenance on Comparable Projects
- DBE participation

Technical Approach

- Understanding of the Scope
- Understanding the Risk

Developer Responsibilities

- Monitor the Project Website
- Responses to questions posed at this workshop are considered to be on an informational basis and are not binding on TxDOT
- Written questions and corresponding responses will be posted on the Project website

The Submittal

Proposers are responsible for ensuring QS submittals are delivered by hand or courier by:

12:00 P.M. CST, September 12, 2013

Any QSs received after the above date and time will be rejected and returned to the sending party unopened.

Attn: Frank Holzmann, P.E.
Texas Department of Transportation
7600 Chevy Chase Drive, Building 2, Suite 400
Austin, Texas 78752

The Submittal

July 26, 2013

Issue Request for Qualifications

August 14, 2013 (11am MST)

Industry Workshop

August 30, 2013

Last day for Proposer Questions

September 12, 2013 (12pm CST)
QS Due Date

October 31, 2013

Short List Announced



Conclusion

The process for official questions and answers remains as given in the RFQ via e-mail.

E-mail address:

txdot-elp-ppp-lp375bhw@txdot.gov

■ **TxDOT**

- Post on Project Website
 - Addenda to RFQ
 - Responses to Questions
 - Updates to Project Documents
- Project website

<http://www.txdot.gov/inside-txdot/projects/studies/el-paso/border-highway-west/bhw-rfq.html>

A circular graphic with a stylized landscape. The background features a purple mountain range under a blue sky with white clouds. In the foreground, there is a city skyline with several buildings in shades of brown and tan. A road with a white center line curves from the bottom left towards the center. The text "Border Highway" is at the top in bold black with a yellow outline. "WEST" is in large, light blue, outlined letters. "Extension Project" is in bold black with a yellow outline.

Border Highway
WEST
Extension Project