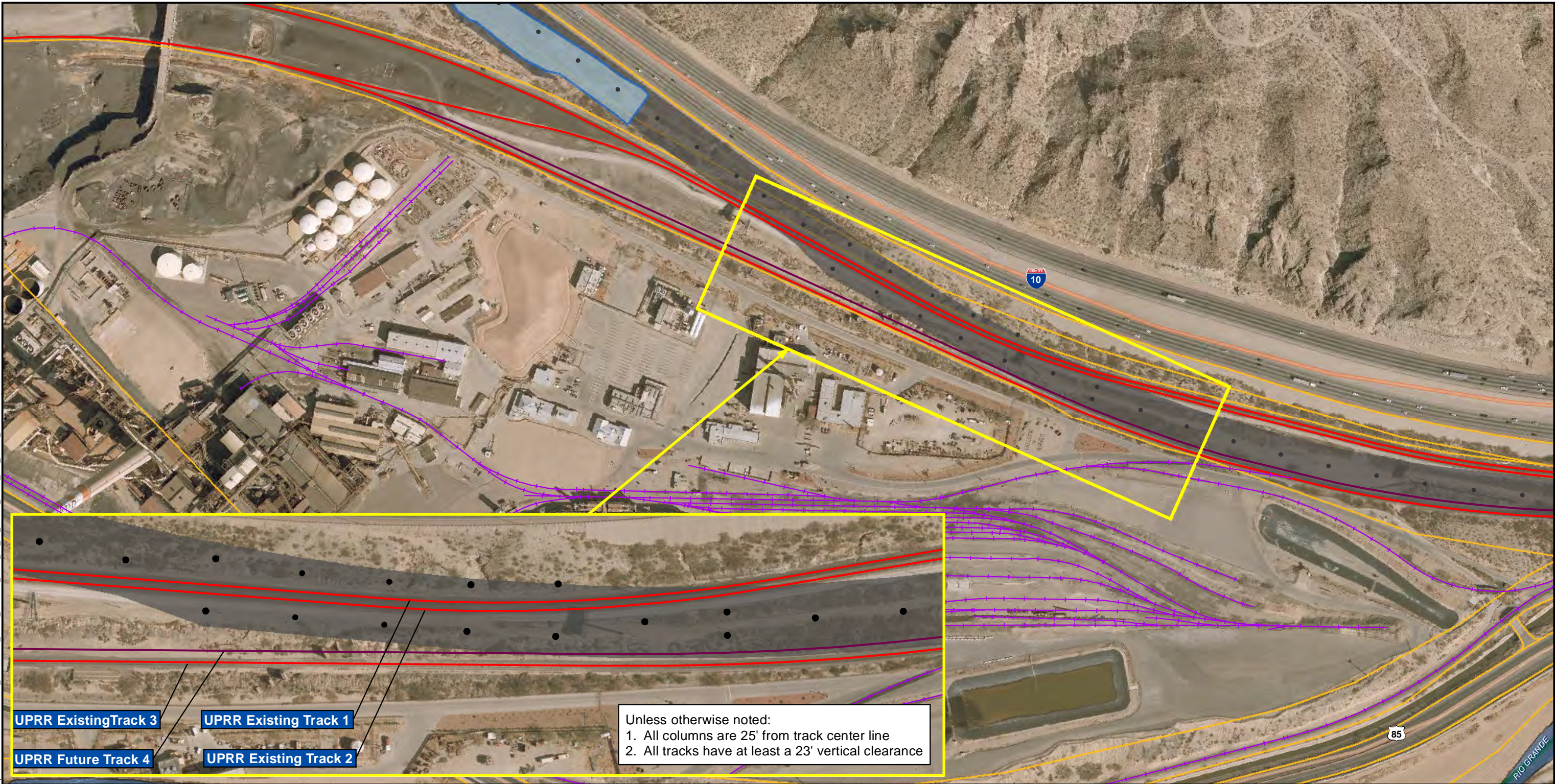


Path: \\A:\usw00\lps\42085 Border Hwy West\Techprod\GIS\MXD\EXHBTPL\_010\UPRR\_Pinch\_Points1\_2013\_05\_21\UPRR\_Pinch\_Pts\_South\_Asarco.mxd Date Saved: 5/31/2013

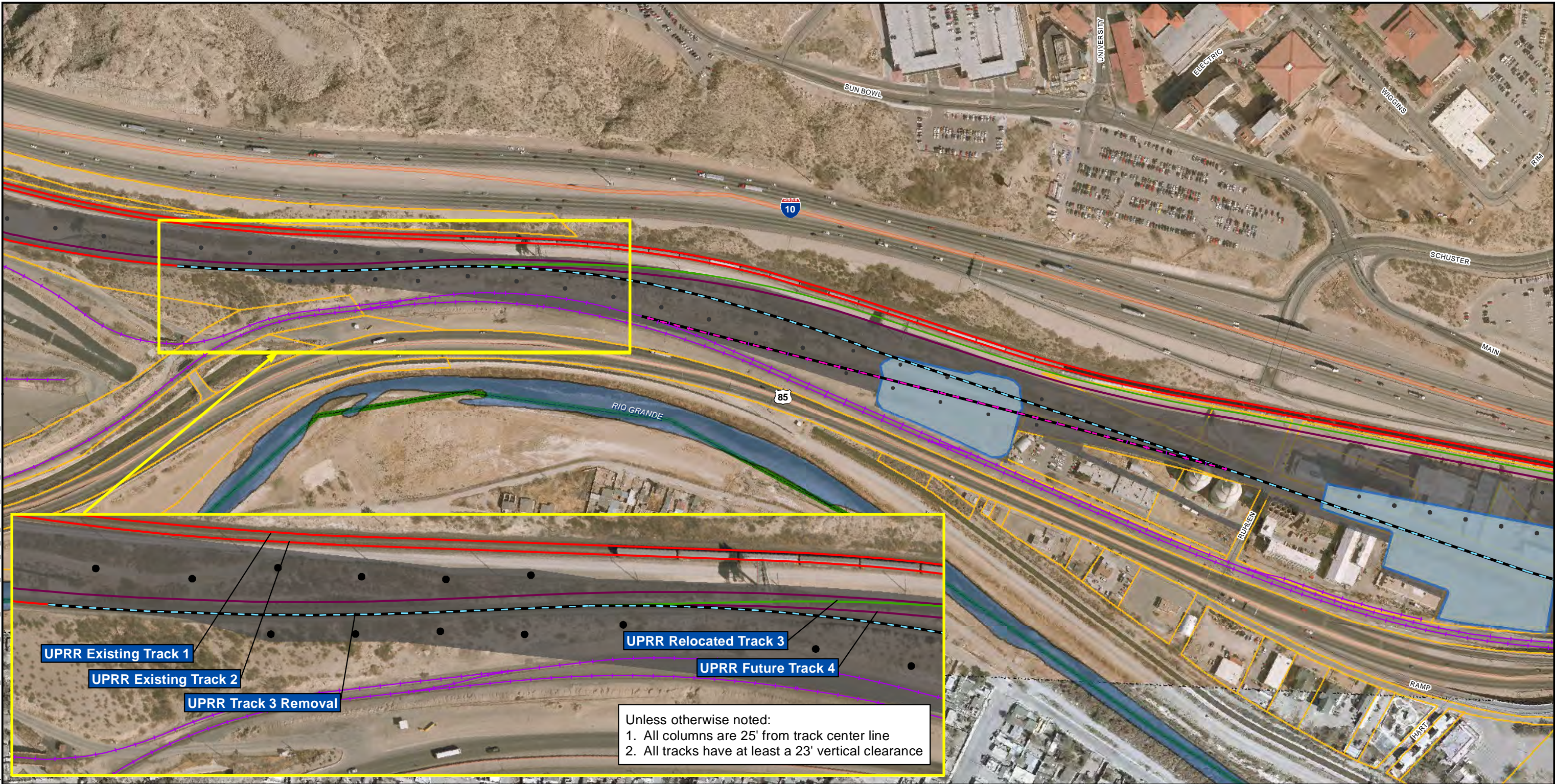


<b>Data Source</b> Aerial: NAIP, 08/30/2012 BHW Boundary: Halff Engineering, 2013 BHW Schematic: Halff Engineering, 2013 Rail: Obtained from Halff Engineering, 2013	<b>Legend</b> <div><div><div>■</div> BHW Right-of-Way</div><div><div>■</div> BHW Pier Layout</div><div><div>■</div> Drainage Pond</div><div><div>■</div> Parcel Boundary</div></div> <div><div>—</div> UPRR Future Track 4</div> <div><div>—</div> BNSF Future Track</div> <div><div>—</div> BNSF Existing Track</div> <div><div>—</div> UPRR Existing Track</div>
--	---

DISCLAIMER: This map was generated by HNTB Corporation using GIS (Geographic Information Systems) software. No claims are made to the accuracy or completeness of the information shown herein nor to its suitability for a particular use. The scale and location of all mapped data are approximate.



Path: \\Ausw001\proj\42085 Border Hwy West\Techprod\GIS\MXD\EXHBTPL\_010\UPRR\_Pinch\_Points2\_2013\_05\_21\UPRR\_Pinch\_Pts\_Rescue\_Mission.mxd Date Saved: 5/31/2013

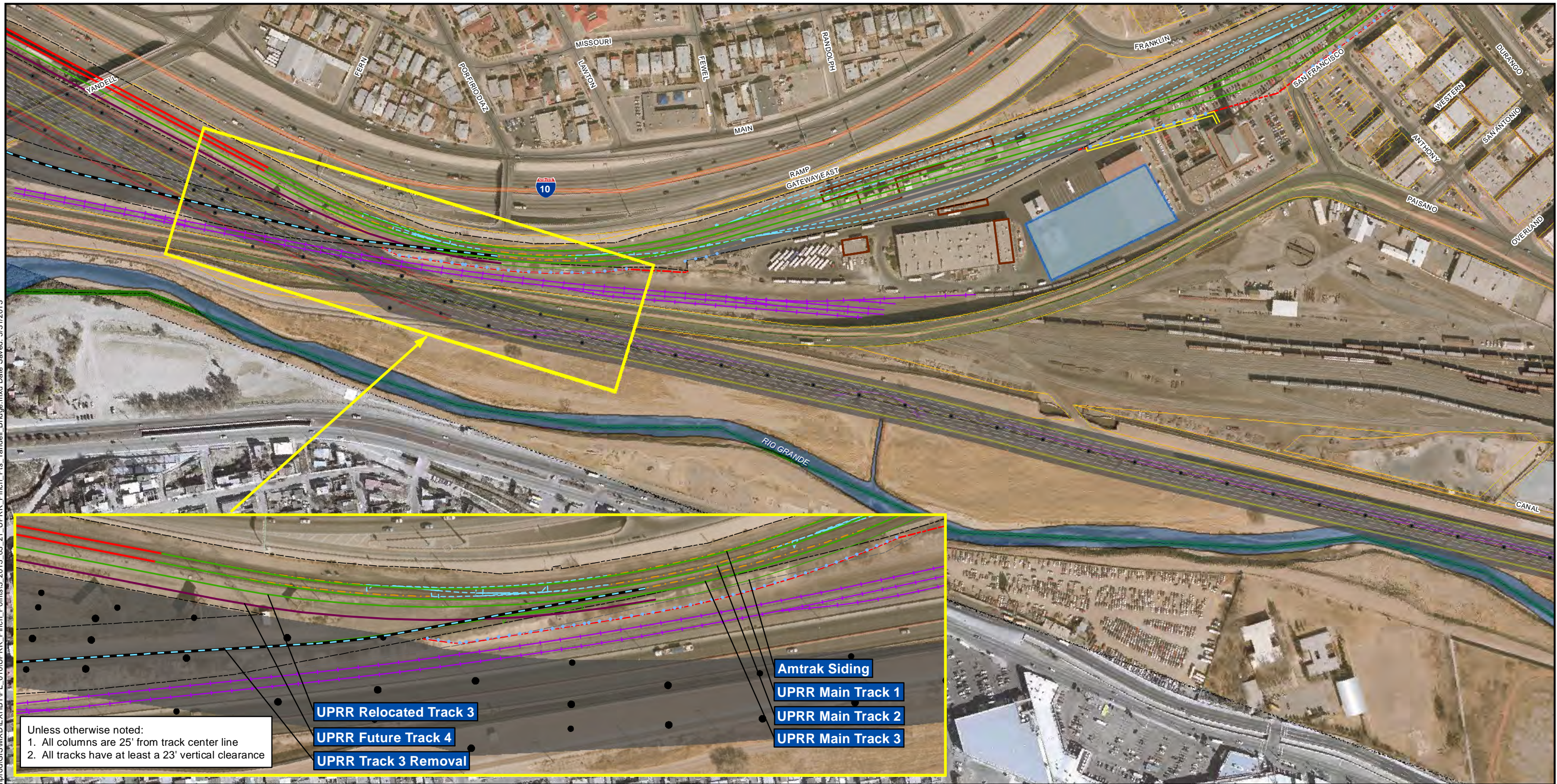


Data Source	Legend	Scale	Location Map	Project Information												
Aerial: NAIP, 08/30/2012 BHW Boundary: Halff Engineering, 2013 BHW Schematic: Halff Engineering, 2013 Rail: Obtained from Halff Engineering, 2013	<table border="0"><tr><td> Project Area</td><td> UPRR Future Track 4</td><td> BNSF Track Removal</td></tr><tr><td> BHW Pier Layout</td><td> UPRR Relocated Track 3</td><td> BNSF Future Track</td></tr><tr><td> Drainage Pond</td><td> UP-FUTURE-REMOVAL</td><td> BNSF Existing Track</td></tr><tr><td> Parcel Boundary</td><td> UPRR Track 3 Removal</td><td> UPRR Existing Track</td></tr></table>	Project Area	UPRR Future Track 4	BNSF Track Removal	BHW Pier Layout	UPRR Relocated Track 3	BNSF Future Track	Drainage Pond	UP-FUTURE-REMOVAL	BNSF Existing Track	Parcel Boundary	UPRR Track 3 Removal	UPRR Existing Track	 1:3,600 1" = 300' 0 75 150 300 Feet		<p> Texas Department of Transportation</p> <p><b>Loop 375 Border Highway West Extension Project</b></p> <p>From Racetrack Drive to US 54</p> <p><b>UPRR PINCH POINTS</b></p> <p>Northwest of Rescue Mission (PP2)</p> <p> HNTB</p> <p>El Paso County, Texas CSJ: 2552-04-027</p> <p> HALFF</p>
Project Area	UPRR Future Track 4	BNSF Track Removal														
BHW Pier Layout	UPRR Relocated Track 3	BNSF Future Track														
Drainage Pond	UP-FUTURE-REMOVAL	BNSF Existing Track														
Parcel Boundary	UPRR Track 3 Removal	UPRR Existing Track														

DISCLAIMER: This map was generated by HNTB Corporation using GIS (Geographic Information Systems) software. No claims are made to the accuracy or completeness of the information shown herein nor to its suitability for a particular use. The scale and location of all mapped data are approximate.



Path: \\AUSW001\proj\42085 Border Hwy West\Techprod\GIS\MXD\EXHBTPL\_010\UPRR\_Pinch\_Points3\_2013\_05\_21\UPRR\_Pinch\_Pts\_Yandell\_Bridge.mxd Date Saved: 5/31/2013



Unless otherwise noted:  
1. All columns are 25' from track center line  
2. All tracks have at least a 23' vertical clearance

UPRR Relocated Track 3  
UPRR Future Track 4  
UPRR Track 3 Removal

Amtrak Siding  
UPRR Main Track 1  
UPRR Main Track 2  
UPRR Main Track 3

#### Data Source

Aerial: NAIP, 08/30/2012  
BHW Boundary: Half Engineering, 2013  
BHW Schematic: Half Engineering, 2013  
Rail: Obtained from Half Engineering, 2013

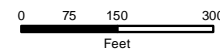
#### Legend

- |                  |                                |                   |          |
|------------------|--------------------------------|-------------------|----------|
| BHW Pier Layout  | UPRR Future Track 4            | Shift             | Sidewalk |
| BHW Project Area | UPRR Relocated Track 3         | Existing Mainline | Removal  |
| Parcel Boundary  | UPRR Track 3 Removal           | Foreign Railroad  | Dock     |
| Proposed         | RR Right of Way                | Retaining Wall    |          |
| Side             | Former RR Right of Way         |                   |          |
| Remove           | RR Right of Way to be Acquired |                   |          |



1:3,600

1" = 300'



This project does not cross international boundaries.



## Loop 375 Border Highway West Extension Project

From Racetrack Drive to US 54

### UPRR PINCH POINTS South of Yandell Bridge (PP3)

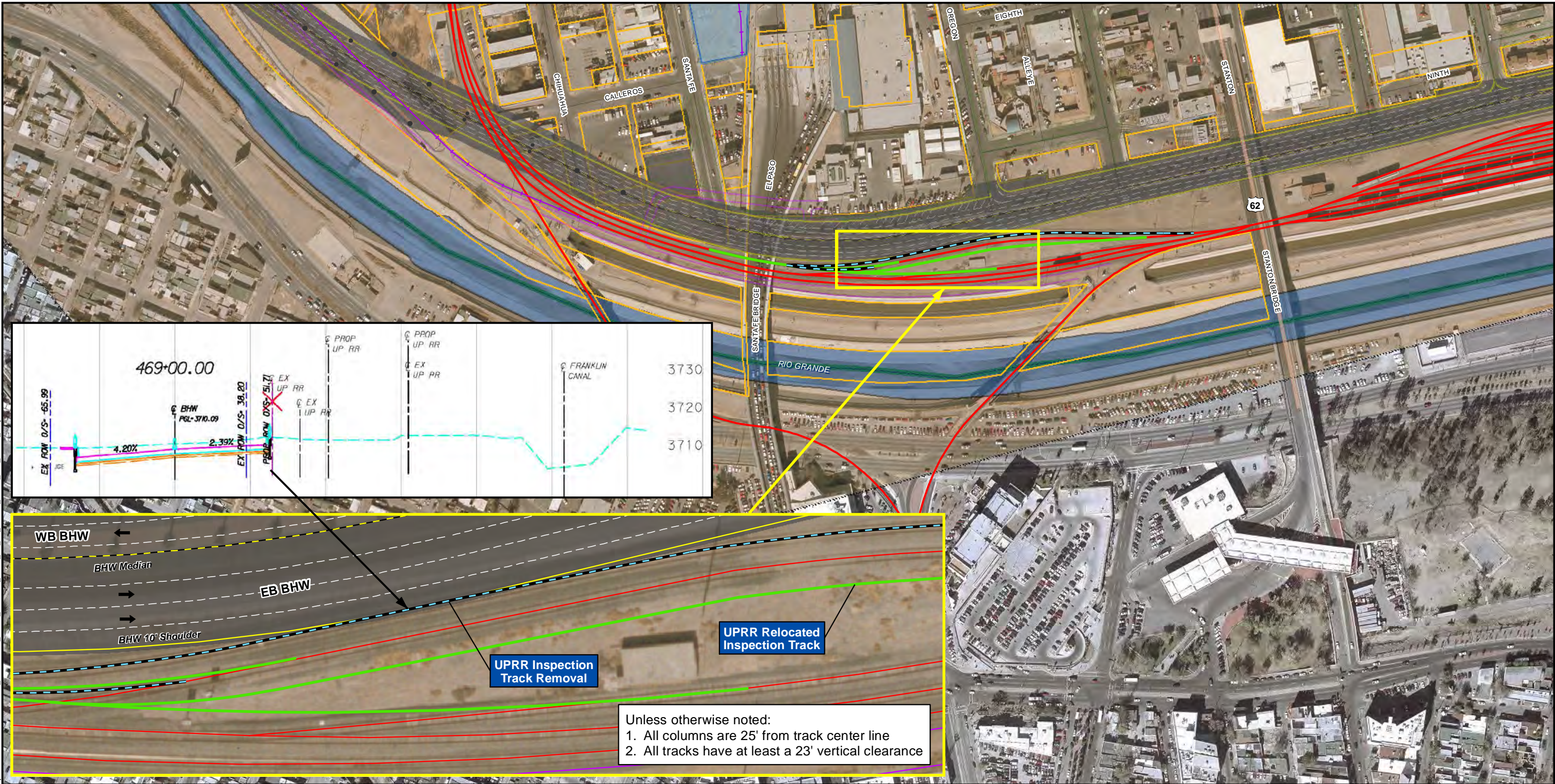
El Paso County, Texas  
CSJ: 2552-04-027



DISCLAIMER: This map was generated by HNTB Corporation using GIS (Geographic Information Systems) software. No claims are made to the accuracy or completeness of the information shown herein nor to its suitability for a particular use. The scale and location of all mapped data are approximate.



Path: \\AUSW001\p01\42085 Border Hwy West\Techprod\GIS\MXD\EXHBTPL\_010\UPRR\_Pinch\_Points.mxd Date Saved: 5/31/2013

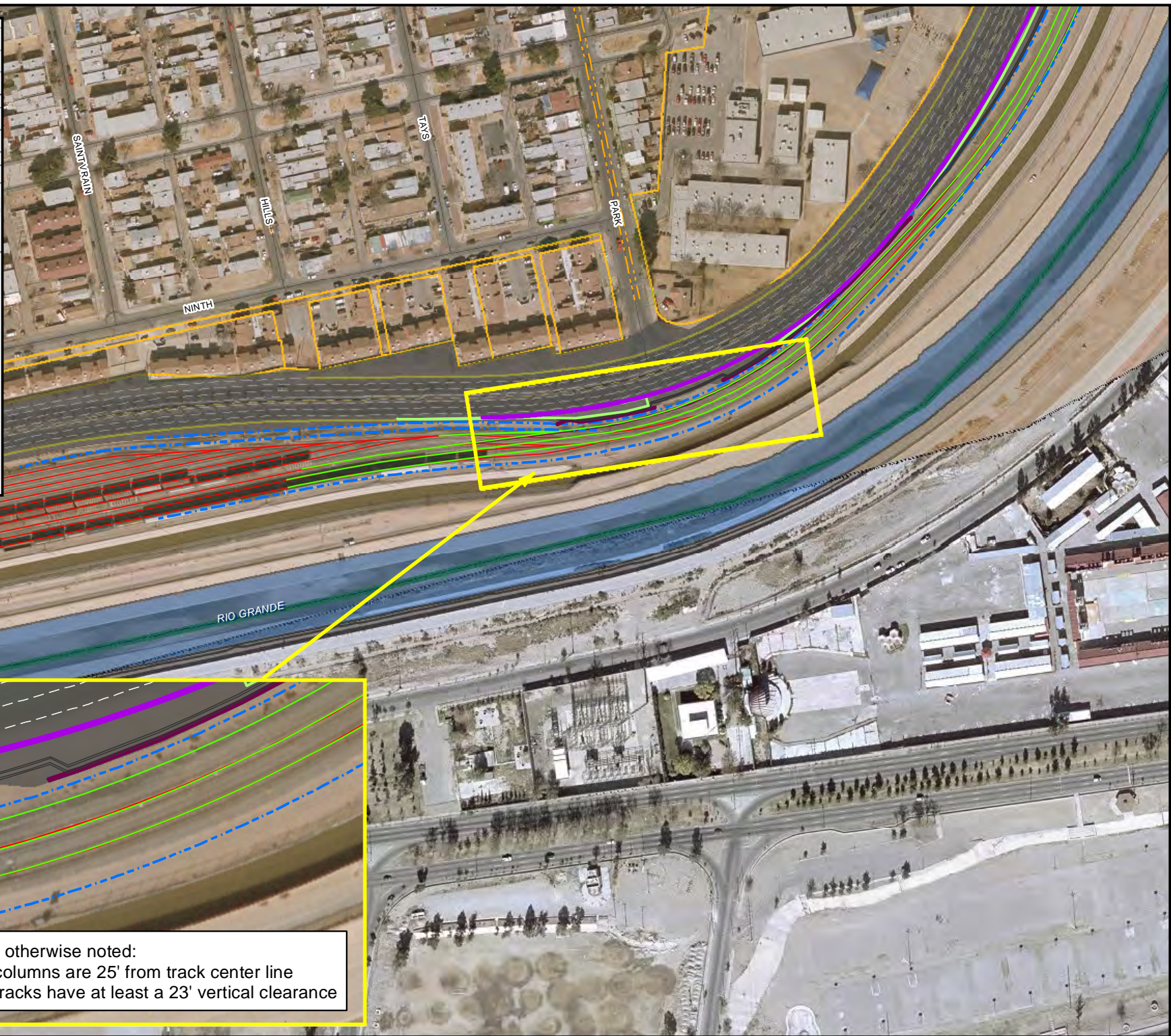
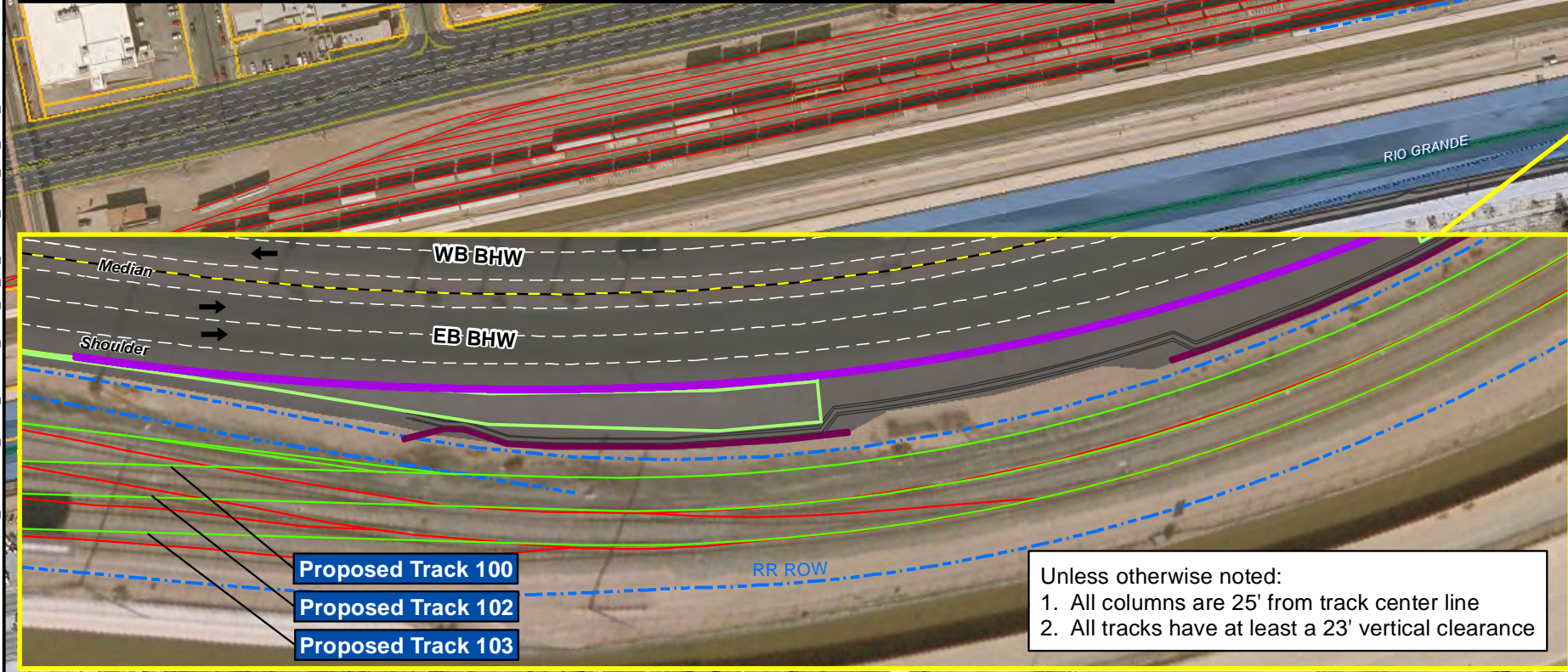
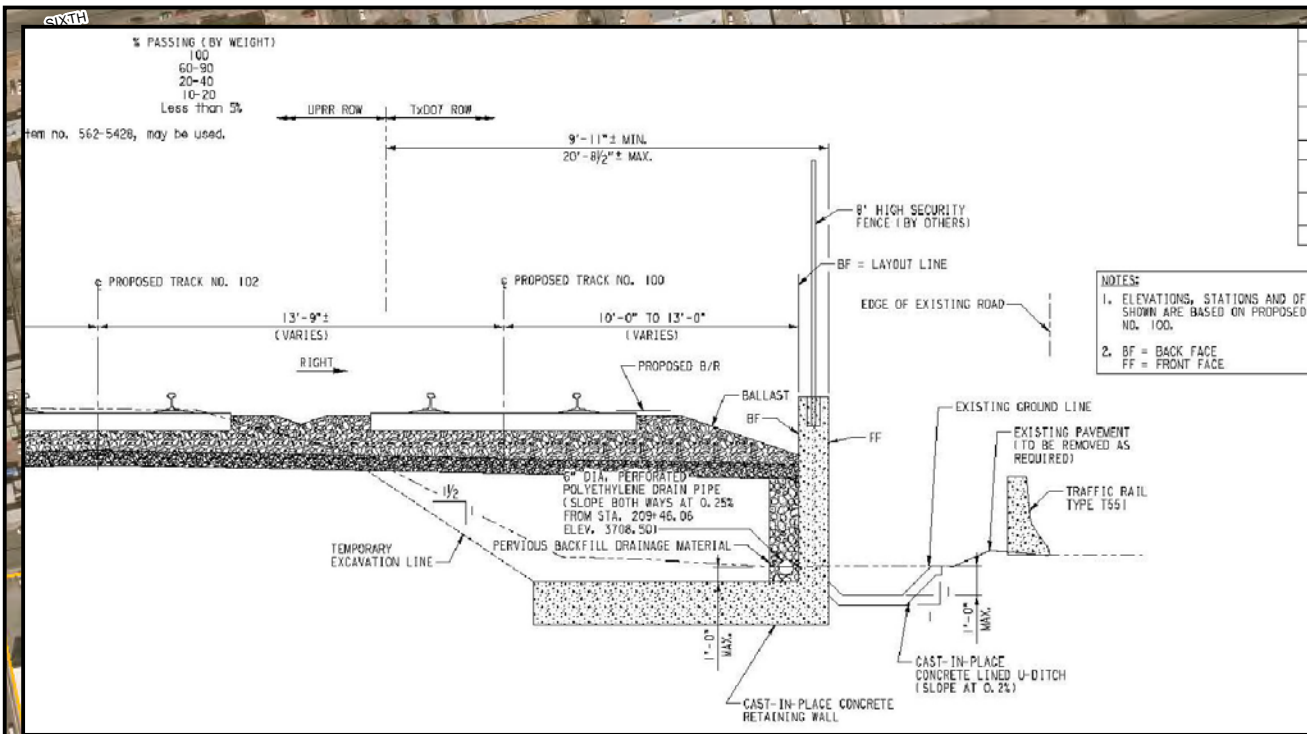


Data Source	Legend	Scale	Disclaimer												
Aerial: TxDOT, 2009 BHW Boundary: Half Engineering, 2013 BHW Schematic: Half Engineering, 2013 Rail: Obtained from HDR Engineering, 2013	<table border="0"><tr><td>Project Area</td><td>UPRR Future Track 4</td><td>BNSF Track Removal</td></tr><tr><td>BHW Pier Layout</td><td>UPRR Relocated Track 3</td><td>BNSF Future Track</td></tr><tr><td>Parcel Boundary</td><td>UP-FUTURE-REMOVAL</td><td>BNSF Existing Track</td></tr><tr><td></td><td>UPRR Track 3 Removal</td><td>UPRR Existing Track</td></tr></table>	Project Area	UPRR Future Track 4	BNSF Track Removal	BHW Pier Layout	UPRR Relocated Track 3	BNSF Future Track	Parcel Boundary	UP-FUTURE-REMOVAL	BNSF Existing Track		UPRR Track 3 Removal	UPRR Existing Track	1:3,000 1" = 250' 0 62.5 125 250 Feet	<p>Loop 375 Border Highway West Extension Project</p> <p>From Racetrack Drive to US 54</p> <p><b>UPRR PINCH POINTS</b> International Inspection Track (PP4)</p> <p>El Paso County, Texas CSJ: 2552-04-027</p> <p>HALFF</p>
Project Area	UPRR Future Track 4	BNSF Track Removal													
BHW Pier Layout	UPRR Relocated Track 3	BNSF Future Track													
Parcel Boundary	UP-FUTURE-REMOVAL	BNSF Existing Track													
	UPRR Track 3 Removal	UPRR Existing Track													

DISCLAIMER: This map was generated by HNTB Corporation using GIS (Geographic Information Systems) software. No claims are made to the accuracy or completeness of the information shown herein nor to its suitability for a particular use. The scale and location of all mapped data are approximate.



Path: \\A:\usw00\jobs\42085 Border Hwy West\Techprod\GIS\MXD\EXHBTPL\_010\UPRR\_Pinch\_Points\5. 2013\_05\_30\UPRR\_Pinch\_Pts\_Park\_Street\Map Date Saved: 5/31/2013

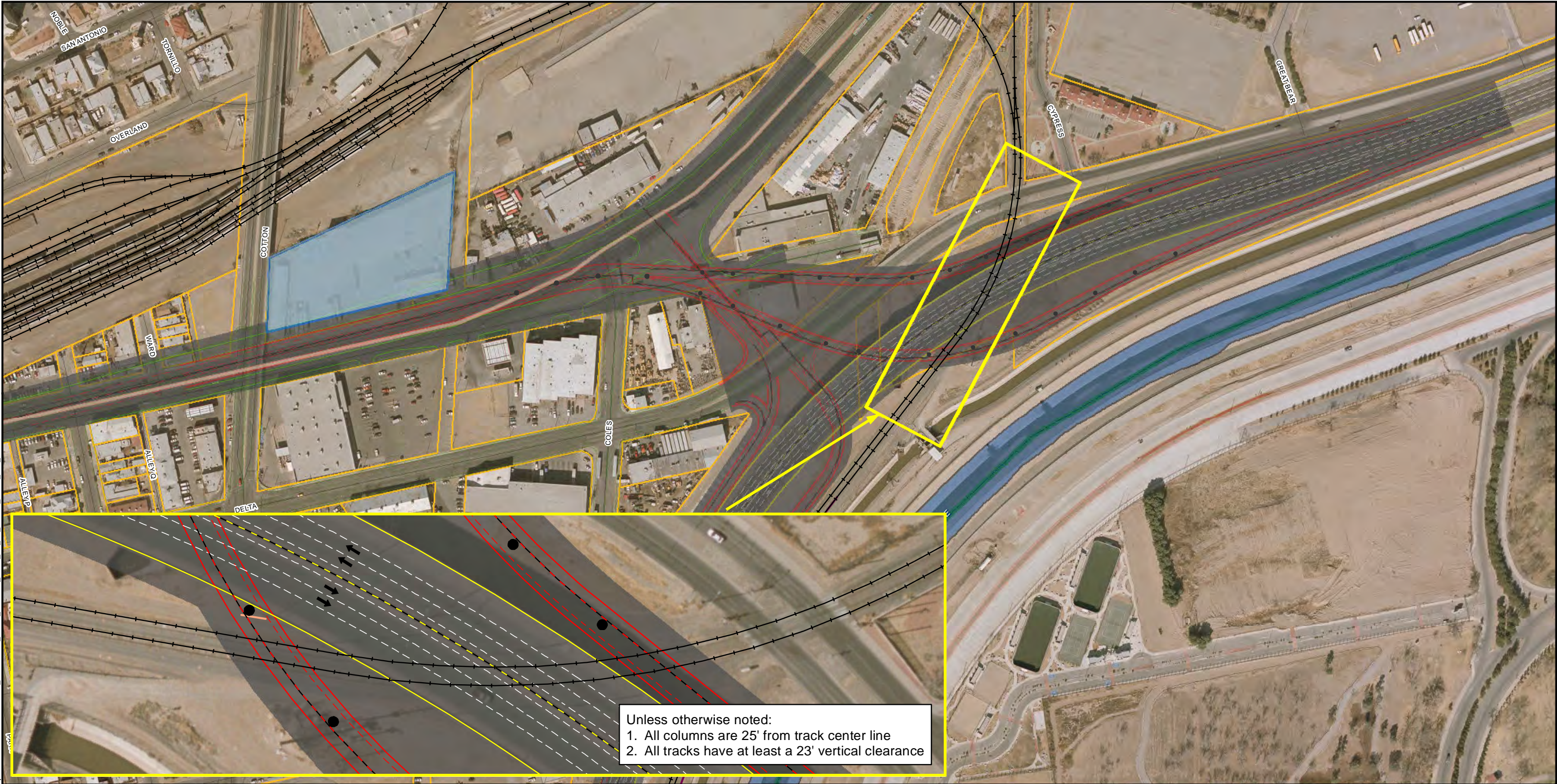


Data Source	Legend	Scale	Map	Project Information
Aerial: TxDOT, 2009 BHW Boundary: Half Engineering, 2013 BHW Schematic: Half Engineering, 2013 Rail: Obtained from HDR Engineering, 2013	<ul style="list-style-type: none"><li>BHW Right-of-Way</li><li>Parcel Boundary</li><li>UPRR Existing Track</li><li>UPRR Relocated Track</li><li>Railroad Right-of-Way</li><li>Concrete Apron</li><li>Ditch Toe</li><li>Ditch Top</li><li>Traffic Rail</li><li>UPRR Survey Construction Lines</li><li>Wall</li></ul>	<p>1:3,000</p> <p>1" = 250'</p> <p>0 62.5 125 250 Feet</p>	<p>EL PASO COUNTY</p> <p>CITY OF EL PASO</p> <p>US 54</p> <p>275</p> <p>621</p> <p>180</p> <p>275</p> <p>20</p>	<p><b>Loop 375 Border Highway West Extension Project</b></p> <p>From Racetrack Drive to US 54</p> <p><b>UPRR PINCH POINTS</b></p> <p>Park Street (PP5)</p> <p>El Paso County, Texas CSJ: 2552-04-027</p>

DISCLAIMER: This map was generated by HNTB Corporation using GIS (Geographic Information Systems) software. No claims are made to the accuracy or completeness of the information shown herein nor to its suitability for a particular use. The scale and location of all mapped data are approximate.



Path: \\Ausw001\p\42085 Border Hwy West\Techprod\GIS\MXD\EXHBTPL\_010\UPRR\_Pinch\_Points\6 2013\_05\_31\UPRR\_Pinch\_Pts\_Coles.mxd Date Saved: 5/31/2013



<p><b>Data Source</b></p> <p>Aerial: TxDOT, 2009 BHW Boundary: Half Engineering, 2013 BHW Schematic: Half Engineering, 2013 Rail: Obtained from HDR Engineering, 2013</p>	<p><b>Legend</b></p> <table border="0"><tr><td> BHW Pier Layout</td><td> UPRR Track Removal</td></tr><tr><td> Project Area</td><td> BNSF Track Removal</td></tr><tr><td> Parcel Boundary</td><td> BNSF Future Track</td></tr><tr><td> UPRR Future Track</td><td> BNSF Existing Track</td></tr><tr><td> UPRR Relocated Track</td><td> UPRR Existing Track</td></tr></table>	BHW Pier Layout	UPRR Track Removal	Project Area	BNSF Track Removal	Parcel Boundary	BNSF Future Track	UPRR Future Track	BNSF Existing Track	UPRR Relocated Track	UPRR Existing Track	<p> 1:3,000 1" = 250' </p>	<p> EL PASO COUNTY CITY OF EL PASO This project does not cross international boundaries.</p>	<p> <b>Loop 375 Border Highway West Extension Project</b> From Racetrack Drive to US 54 <b>UPRR PINCH POINTS</b> Coles Overpass (PP6) El Paso County, Texas CSJ: 2552-04-027  </p>
BHW Pier Layout	UPRR Track Removal													
Project Area	BNSF Track Removal													
Parcel Boundary	BNSF Future Track													
UPRR Future Track	BNSF Existing Track													
UPRR Relocated Track	UPRR Existing Track													

DISCLAIMER: This map was generated by HNTB Corporation using GIS (Geographic Information Systems) software. No claims are made to the accuracy or completeness of the information shown herein nor to its suitability for a particular use. The scale and location of all mapped data are approximate.