



Dripping Springs	13
Johnson City	38
Fredericksburg	73

EXECUTIVE SUMMARY

Colorado River Constructors (CRC) appreciates the partnering efforts during the procurement phase and looks forward to designing and constructing The Oak Hill Parkway Project (Oak Hill Project) to improve mobility for the quickly growing communities of Oak Hill, Lakeway, Bee Cave, Dripping Springs, and other communities along the US 290 and SH 71 corridors.

With commuters wasting an estimated 330,437 hours in traffic congestion in 2019 (TTI, 2019), the intersection of two major highways (US 290 and SH 71) widely serves the fast-growing communities in southwest Travis County. Since the Request for Qualifications process began in October 2018, this stretch of urban highway has risen from the 53rd most congested corridor in Texas to the 29th, making it vital for the Project to meet its goals of accommodating current and future travel.

CRC OFFERS A
SAFE, RELIABLE
IMPROVEMENT
TO OAK HILL'S
MOBILITY.



Two major highways in the Austin area, US 290 and SH 71, provide a link between Hays and Travis Counties.





Iconic Trees along Williamson Creek.

(a) Proposer’s Organization and Technical Proposal

CRC is a fully integrated joint venture comprising equity members Fluor Enterprises, Inc. (Fluor) and Balfour Beatty, Inc. (Balfour Beatty).

With 18 years of experience performing projects together in Texas, CRC is currently executing the 183 South (183S) project in Austin with the Central Texas Regional Mobility Authority, scheduled for completion in 2020, and the LBJ East and Southern Gateway projects in Dallas with Texas Department of Transportation (TxDOT). CRC is ready to successfully deliver the Oak Hill Project on schedule and on budget.

TXDOT CAN DEPEND ON CRC TO BE HONEST, TRANSPARENT, AND WORK WITH INTEGRITY.



Typical traffic congestion flowing through the “Y” corridor.

CRC is joined by Lead Engineering Firm, AECOM Technical Services, Inc. (AECOM), and Lead Independent Quality Firm, Raba Kistner, Inc. (RKI), to provide the experience and capabilities necessary to successfully deliver the Oak Hill Project. CRC’s team also includes The Whiddon Group to manage Utility Coordination, Property Acquisition Services to assist with Right of Way Acquisition Services, and Hicks & Company and Bartlett Tree Experts as Environmental Consultants and Tree Services. AECOM design subconsultants include P.E. Structural Consultants, Rios Engineering, SE3, and Terracon.

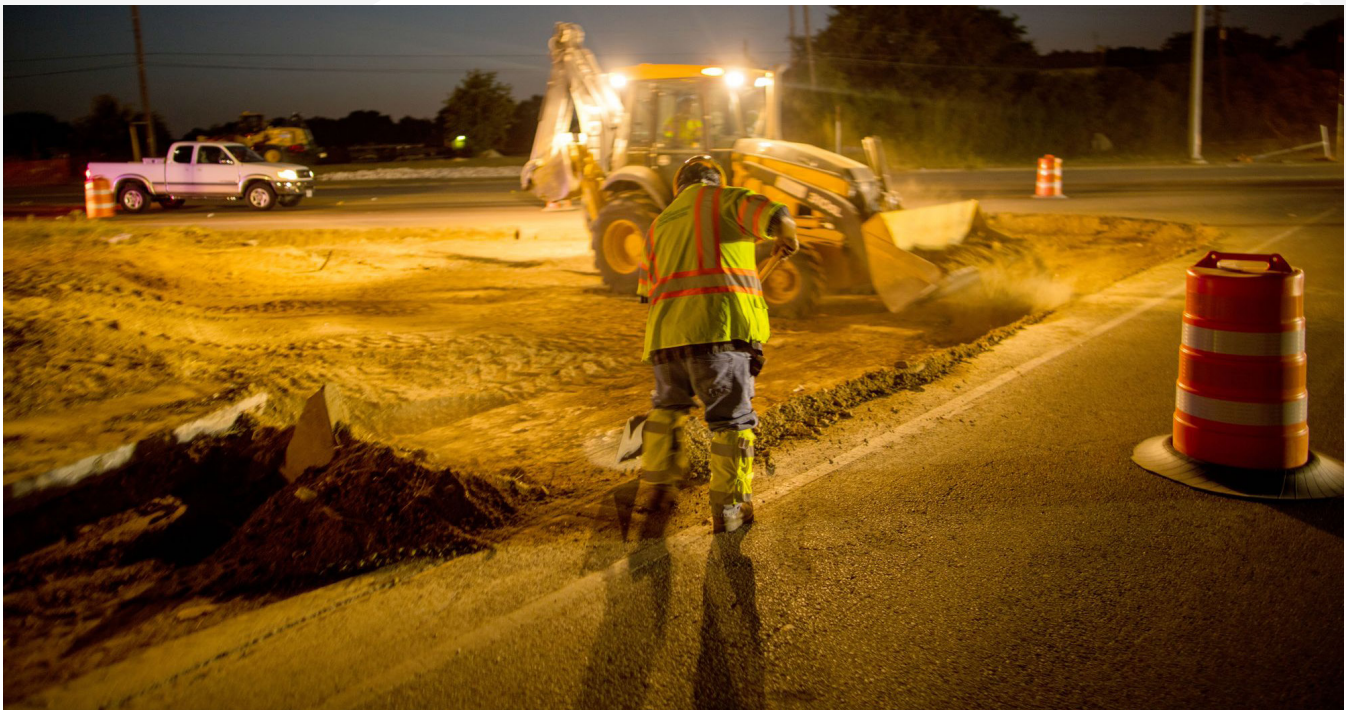
CRC’s proposal contains the information required in the Instructions to Proposers, Exhibit B. The contents have been organized and structured according to the Exhibit E guidelines.



(d) Daily Operations

CRC's daily operations are backed by a flat organizational structure that communicates and resolves issues at the lowest level possible, supported by project management leadership and executive oversight. This management structure will provide TxDOT commits to providing the leadership, management, and personnel to successfully execute the Oak Hill Project. Fluor and Balfour Beatty's successful execution of nine design-build and public-private partnership projects, five of which are in Texas, provides CRC with the refined processes and organizational structures leads to a culture of no surprises throughout project development and execution. As an integrated joint venture with extensive execution experience together, CRC selects personnel on a best-résumé basis. CRC's management structure aligns design, construction, and maintenance during construction and warranty activities throughout the life of the Project.

Each Major Participant commits to providing the Key Personnel approved by TxDOT for the Oak Hill Project.



Fluor and Balfour Beatty have extensive experience working together in Texas and throughout the United States and will bring proven and refined plans and processes to the Oak Hill Project.



(e) Technical Solutions



Project Management

The Project Management Value-Added Responses (VAR) detail elements of the Project Management Plan focusing largely on Project Administration, Public Information and Communications, and Traffic Management Plans. We have derived these VARs based on years of continuous and refined project execution in Texas. Our Project Management Plan and associated VARs will be specifically adapted to address the unique challenges of the Oak Hill Project. CRC's VARs will provide added benefit and value to TxDOT and the traveling public, delivering improvement in communication and program management.



Quality Management

The Quality Management VARs detail CRC's approach to validating materials and work, continual improvement, and personnel on the project. CRC's goal of achieving a high level of quality with verifiable information is critical to avoiding rework and keeping the design build project on schedule and within budget. With team member RKL, CRC will provide a transparent quality program that follows a core system of consistent procedures, which will allow us – with TxDOT – to confirm the quality of each component and activity and initiate corrective action, if necessary, providing a quality project.



Design and Construction Plan

The Design and Construction Plan demonstrates CRC's approach to designing and executing the Oak Hill project. The construction staging and sequencing drives the Oak Hill Project's schedule and our approach to traffic management. Our design and construction plan splits the project into four segments. This provides us with flexibility and enables us to isolate and mitigate potential risks associated with utilities, tree protection and preservation, karst features, drainage, and water quality while continuously addressing the mobility and safety that the public, TxDOT, and our project team demands.

(f) Approach to Disadvantaged Business Enterprise Requirements

CRC is committed to achieving TxDOT's disadvantaged business enterprise (DBE) goals and meeting the objective for DBE participation, with a track record of meeting or exceeding DBE goals on all projects. As established members of the local community, CRC understands the importance of these goals for TxDOT and the Austin region. CRC's approach is shaped by success, with established DBE vendor lists across all scopes of work, and a supply chain team dedicated to right-sizing bid packages for the success of DBE organizations and the Project.



CRC's successful DBE and Vendor Outreach Event, held on November 20, 2019, hosted interested firms to discuss critical topics such as schedule, logistics, and opportunities.

