



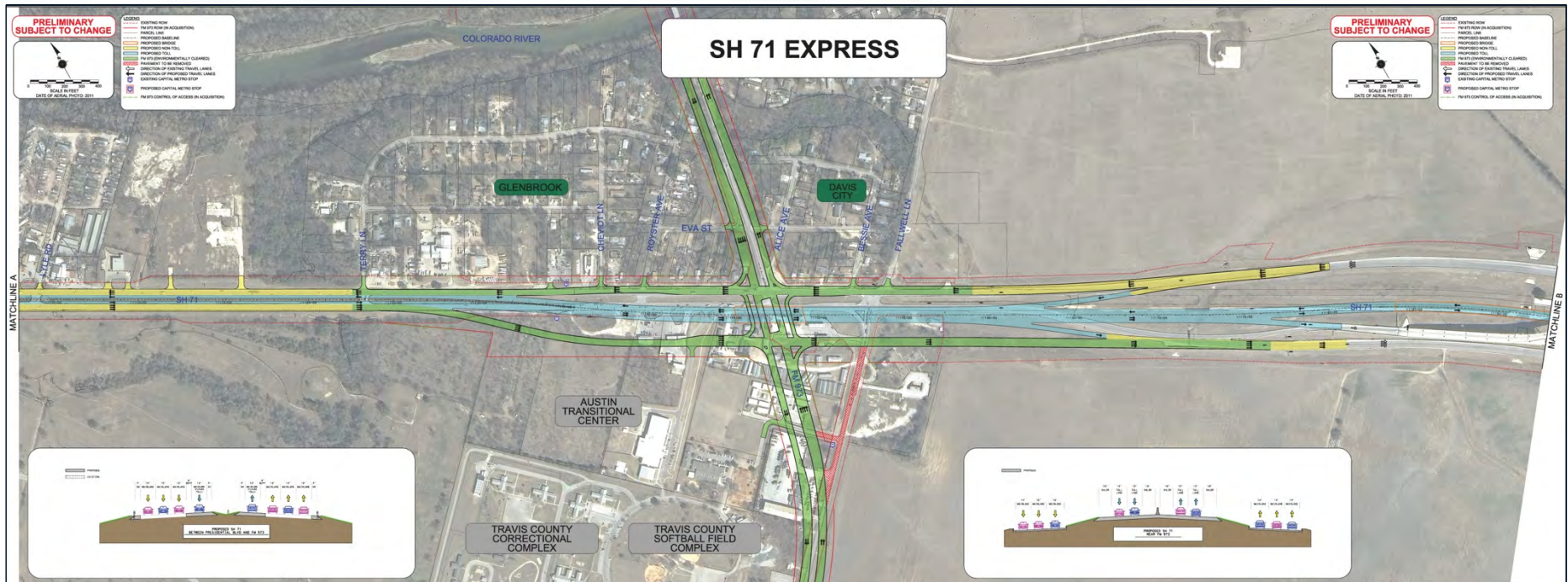
TEXAS DEPARTMENT OF TRANSPORTATION





- Project Overview
- Project Information
- Project Status
- QS Evaluation
- Warranty Term (2-5 years)
- Procurement Schedule
- Questions

Project Overview



- Limits
 - SH 71 – From Presidential Blvd. to East of SH 130
 - FM 973 – From Colorado River to 0.5-miles south of SH 71
- Primacy
 - CTRMA rescinded primacy on February 27, 2013
 - TxDOT accepted primacy on February 28, 2013

Project Overview



SH 71 Toll Lanes at FM 973



Looking west at FM 973



SH 71 Toll Lanes at Tolling Point



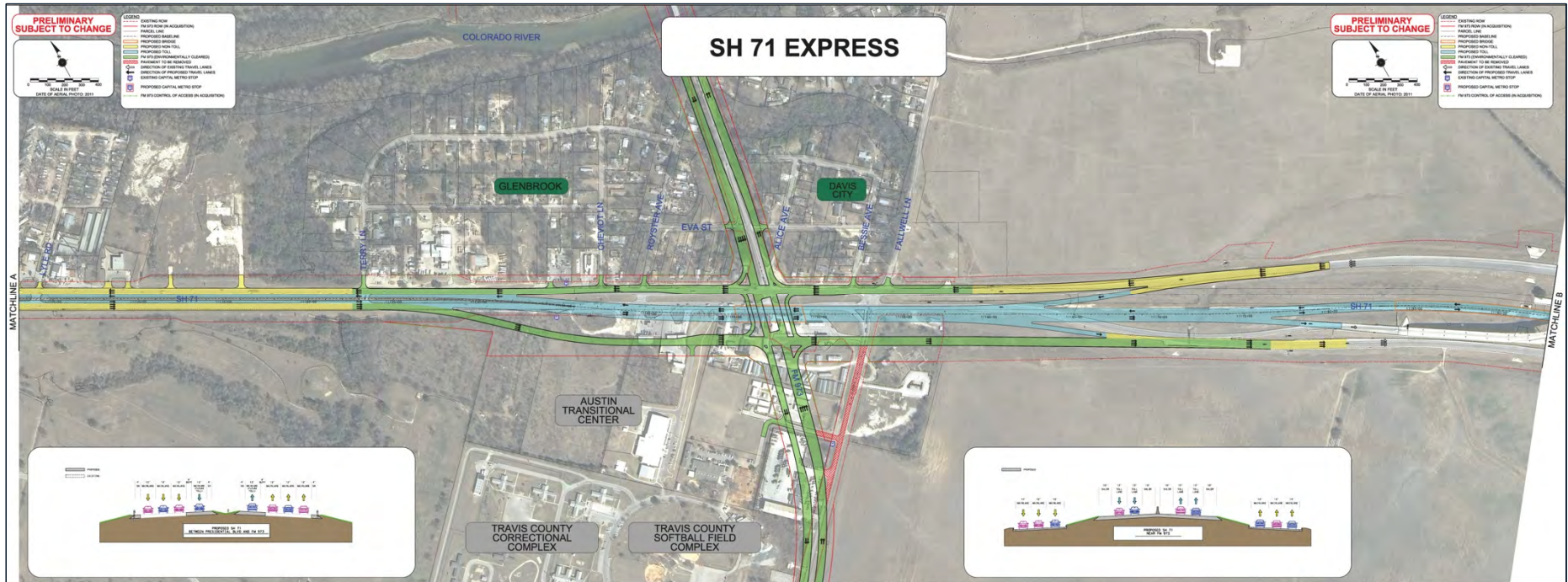
- Understanding the Scope
 - Lighting
 - Safety lighting on SH 71, at intersections and underpasses
 - Bridges
 - New Overpasses at FM 973 and SH 130
 - Widening at Presidential and Onion Creek
 - Pavement
 - Baseline pavement structure for specific locations will be provided in the RFP; any other pavement sections necessary will be designed by the DB Contractor
 - Utilities
 - TxDOT will acquire all ROW; DB Contractor will be responsible for Utility Adjustments and coordination
 - Aesthetics
 - Aesthetic components will be determined based on CSS Workshop recommendations
 - TxDOT anticipates to provide Landscape and Aesthetics details
 - Toll Infrastructure
 - RFP will provide information for Proposers to bid civil components
 - O&M
 - CTRMA will operate and maintain facility
- Public Involvement
 - Public meeting - August 13, 2013
 - Public hearing - late January 2014



■ FM 973

- The Austin district has an approved schematic and environmental document
- Right of Way acquisition underway
- From Harold Green to Colorado River bridge will be let as separate project
- Environmental Assessment: TxDOT received FONSI from FHWA in August 2011

Project Status



■ SH 71

- Subsurface utility engineering (SUE) completed in August 2013
- Geotechnical investigations completed in October 2013, including FM 973 intersection
- Schematic approval anticipated in February 2014
- Environmental Assessment: TxDOT anticipates receiving FONSI in May 2014



- Project Qualification and Experience (65%)
- Statement of Technical Approach (25%)
- Safety Qualifications (10%)



- Project Qualification and Experience (65%)

“TxDOT considers a comparable project to be any similar road project in size and scope, whether or not such project was delivered through a design-build contract or otherwise.”

- Team Experience (30 points)
- Key Personnel (30 points)
- DBE Involvement (5 points)



■ Statement of Technical Approach (25%)

The Statement of Technical Approach will be evaluated in accordance with the following criteria:

- Understanding of Project's scope and complexity (15 points)
- Understanding of Project risks and potential solutions (10 points)



■ Safety Qualifications (10%)

The safety qualifications of the Proposer will be evaluated in accordance with the following criteria:

- Team members' safety records (6 points)
- The strength of the Proposer's and individual team members' safety practices (4 points)



■ Part A of Form F

- Please provide the **total number of fatalities** and **fatal injury rates** for the past three years for all projects in the United States. Please provide the **incidence rates** of nonfatal occupation injuries and illnesses for Heavy and Civil Engineering Construction, as defined by the North American Industry Classification System (NAICS 237), for each of the cases listed below for the past three years for all projects nationwide.
- **Please note that the fatal injury rate is calculated as follows: $\text{Rate} = (\text{Number of fatal work injuries} / \text{total hours worked by all employees during the calendar year}) \times 200,000,000$.** The 200,000,000 in the formula represents the equivalent of 100,000 employees working 40 hours per week, 50 weeks per year and provides the standard base for the fatal injury rates.
- **Please note that the incidence rate is calculated as follows: $\text{Rate} = (\text{Number of cases} / \text{total employee hours worked during the calendar year}) \times 200,000$.** The 200,000 hours in the formula represents the equivalent of 100 employees working 40 hours per week, 50 weeks per year and provides the standard base for the incidence rates.

Safety Questionnaire (Form F)



Z = total hours worked by all employees during the calendar year

A= Number of Fatalities

$B = A \div Z \times 200,000,000$

$C = D \div Z \times 200,000$

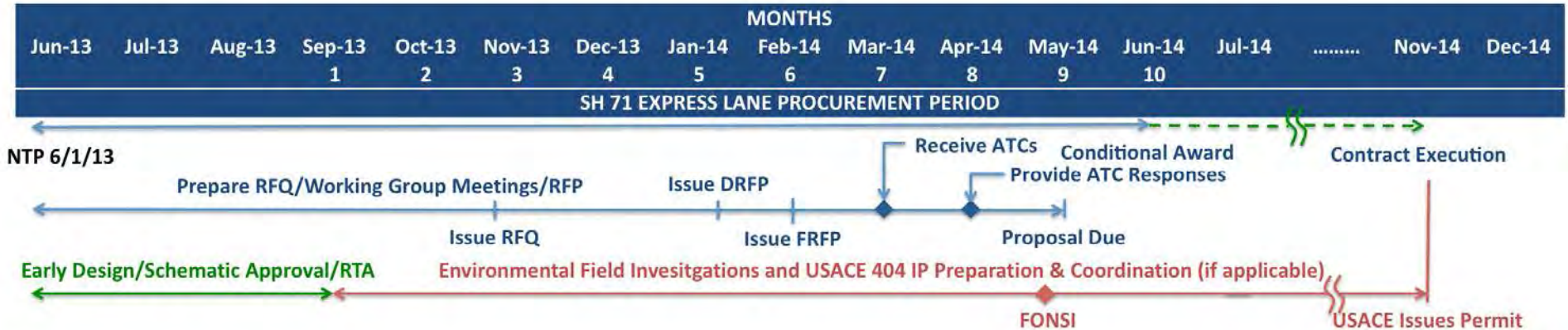
D(1-5)=Total Recordable Cases, Cases w/Days Away from Work , Job Transfer or Restriction, or other Recordable Cases

Data Series	2010	2011	2012
Fatalities (A)			
Number of Fatalities	A	A	A
Fatal Injury Rate per 100,000 full-time workers (B)			
Hour-Based Construction Fatal Injury Rate	B	B	B
Incidence Rate of Injury and Illness Cases per 100 Full-Time Workers (C)			
Total Recordable Cases (D1)	C	C	C
Cases with Days Away from Work, Job Transfer or Restriction(D2)	C	C	C
Cases with Days Away from Work(D3)	C	C	C
Cases with Job Transfer or Restriction(D4)	C	C	C
Other Recordable Cases(D5)	C	C	C



- Warranty Term
 - Will commence upon substantial completion
 - Two to five-years after final acceptance
 - *“The Design Build Agreement is expected to include a two-year general warranty, along with a performance-specific warranty for certain elements that will extend for up to five years following the completion of the Project.”*

Procurement Schedule



■ Milestones:

- RFQ : November 15, 2013
- Deadline for questions on RFQ : November 26, 2013
- DRFP : January 31, 2014
- FRFP : February 28, 2014
- Proposals due : May 21, 2014
- Anticipated Conditional Award : June 26, 2014



Proposers are responsible for ensuring QS submittals are delivered by hand or courier on Friday, December 13, 2013 by 3:00 p.m. to:

Attn: Frank Holzmann, P.E.
Texas Department of Transportation
7600 Chevy Chase Drive, Building 2 Suite 400
Austin, Texas 78752
Email: TxDOT-AUS-PPP-SH71@txdot.gov

Any QSs received after the above date and time will be rejected and returned to the sending party unopened.

Delivering QS Submittals



Proposers are responsible for monitoring the Project website for information concerning this procurement.

Proposers are advised that responses to questions posed at this workshop are considered to be on an informational basis and are not binding on TxDOT. The process for official questions and answers remains as given in the RFQ via e-mail.

E-mail address: TxDOT-AUS-PPP-SH71@txdot.gov

TxDOT will post responses to those questions of general application and requests for clarifications which TxDOT deems to be material and not adequately addressed in previously provided documents on the Project website.

TxDOT will post any addenda to this RFQ on the Project website.

QUESTIONS