

SH 99 Grand Parkway Segment B-1 Design-Build Project

Utility Workshop



May 8, 2025

TEXAS DEPARTMENT OF TRANSPORTATION CONTACTS

KENNETH J. SHIRLEY, PE, CCM, DBIA

Construction Management Engineer

TEXAS DEPARTMENT OF

TRANSPORTATION

Houston District/Strategic Projects Office

Kenneth.Shirley@txdot.gov

936-641-7240

RENEE S. LAURENDINE

Utility Section Supervisor

TEXAS DEPARTMENT OF TRANSPORTATION

Houston District/Transportation Planning

and Development

Renee.Laurendine@txdot.gov

713-802-5760

SH 99 Grand Parkway Segment B-1 Design-Build Project

Utility Workshop



May 8, 2025

Table of Contents

4 | Project Overview

10 | Adjacent Projects

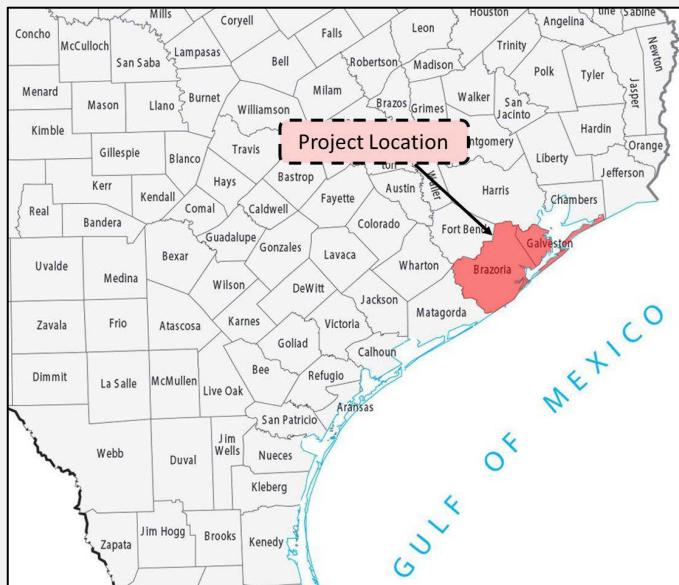
17 | Project Status

24 | DESIGN-BUILD Utility Process



Project Overview

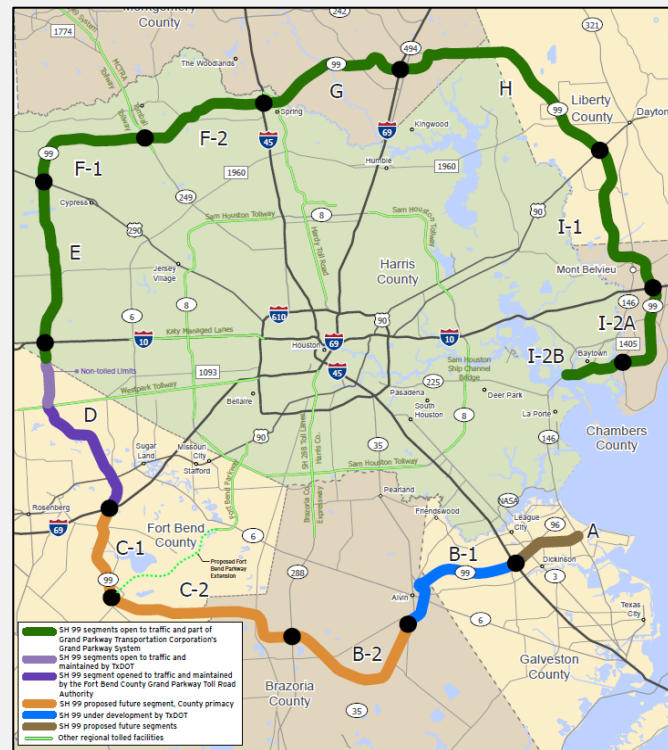
Corridor Location and Project Limits



Quick Facts

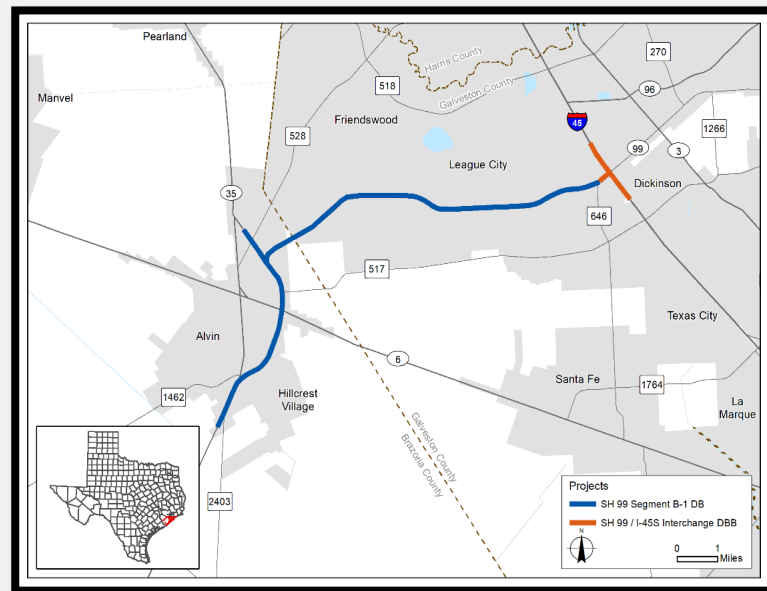
Segment B-1 Construction Limits: FM 646 to South of FM 2403

Project Locations: Galveston & Brazoria counties

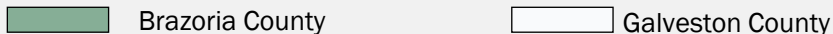


Project Overview

- **Limits:** FM 646 to South of FM 2403
- **Length:** 14.0 miles
- **Project Details:**
 - Construct 4-lane tollway with discontinuous 2-lane frontage roads and interchanges
 - Construct two direct connectors at SH 35
 - Construct SH 35 mainlanes north of SH 99
 - Four direct connectors at I-45 interchange to be constructed by others
- **Estimated DB Cost:** \$1.94 Billion



Project Overview



SH 99, FM 646 TO BRAZORIA CL

Construct 4-lane tollway with discontinuous 2-lane frontage roads and interchanges

SH 99, GALV CL TO S OF FM 2403

Construct 4-lane tollway with limited 2-lane frontage roads and interchanges

SH 99, AT SH 35

Construct 2 direct connectors (TOLL)

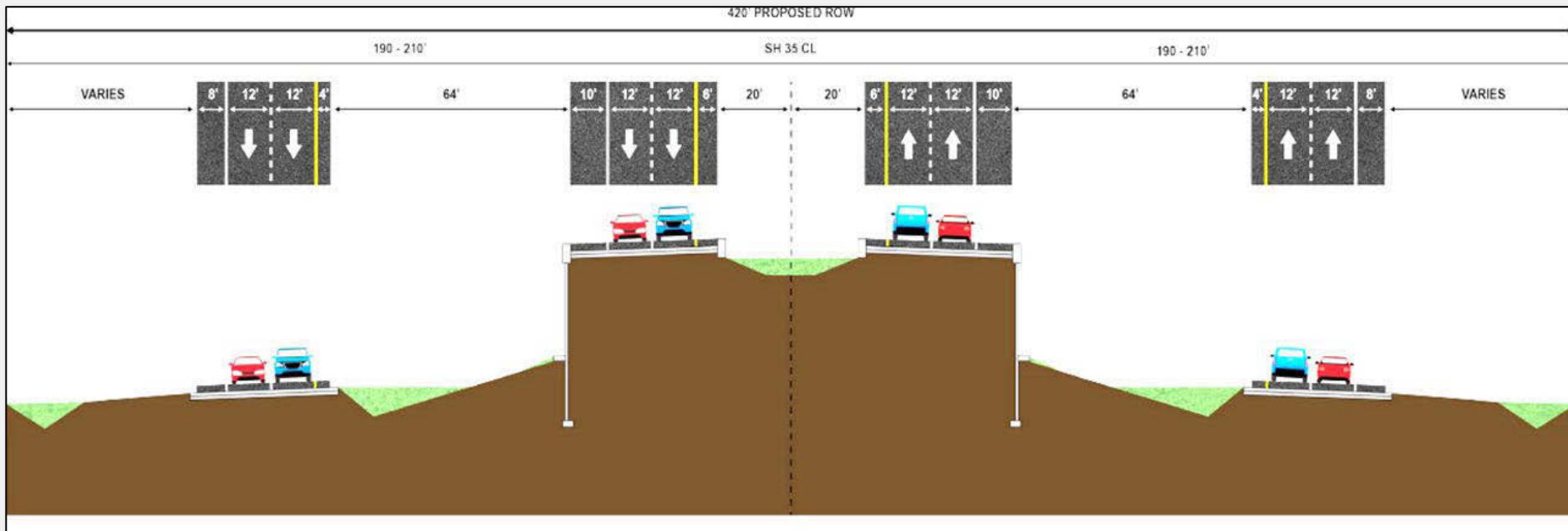
N GORDON ST TO STEELE RD

Construct 4 new mainlanes with overpasses at Wheeler Drive at FM 528 and reconstruct existing frontage roads.

N OF WHEELER DR TO S OF FM 2403

Remove & replace existing JRCF pavement in kind, including guardrail, striping, etc.

SH 99 Grand Parkway Segment B-1 – Typical Section



Utility Owners

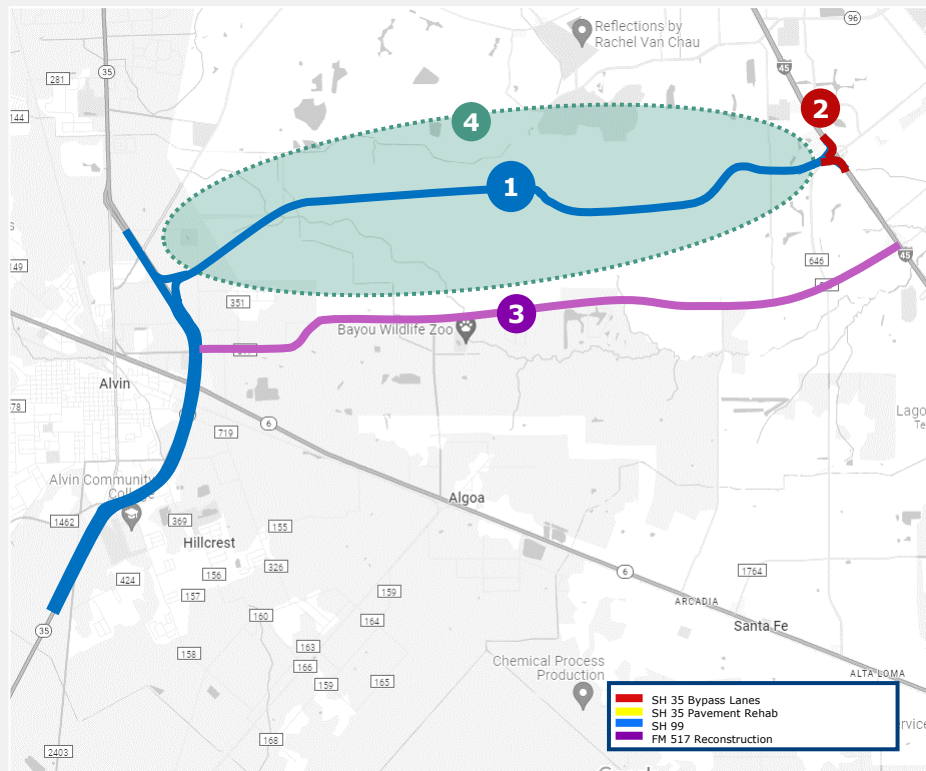
Utility Owners

Air Liquide Large Industries U.S. LP	Phillips 66
Air Products LLC	Shell Pipeline
Buckeye	Vandevener Energy
CenterPoint Energy (Gas)	AT&T Texas
Chevron	Comcast
Denbury Green Pipeline	Frontier
DOW	Interface
Energy Transfer	Phonoscope
Enterprise	Verizon (MCI)
Equistar	CenterPoint Energy (Electric Distribution)
Exxon Mobile	CenterPoint Energy (Electric Transmission)
Genesis Pipeline	Texas-New Mexico Power (Electric Distribution)
INEOS USA	Texas-New Mexico Power (Electric Transmission)
Kinder Morgan Tejas Pipeline	Gulf Coast Water Authority
Monument Pipeline	City of Alvin (Water/Wastewater)
Panther (now Third Coast)	League City (Water/Wastewater)



Adjacent Projects

Project & Adjacent Projects



1	SH 99 Segment B-1 From FM 646 to South of FM 2403	DESIGN - BUILD
		NTP1: 06/2026

2	SH 99, AT I-45S Construct 4 direct connectors	DESIGN BID BUILD
		LET Date: 02/2028

3	FM 517 Reconstruction From I-45 S to SH 35	DESIGN BID BUILD
		LET Date: 12/2027

4	Third Party Development Unknown timetable for private developer activities in the greenfield section	

Adjacent Project

Adjacent Project

Adjacent Project

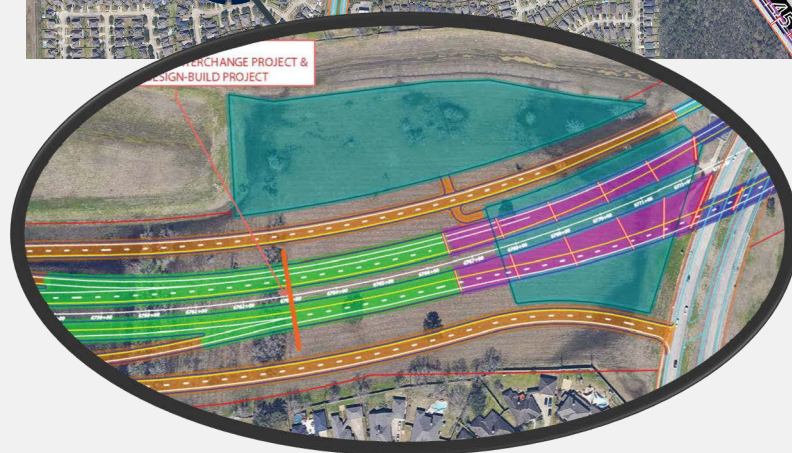
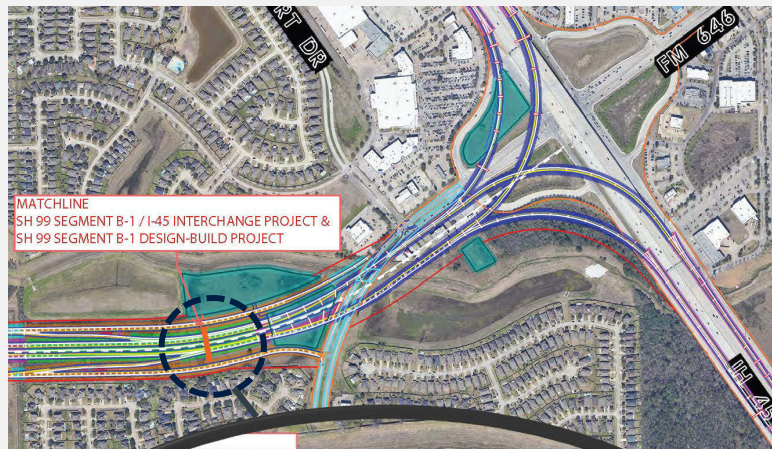
Adjacent Project - SH 99, AT IH 45S (SEG B1)

Location: Galveston County, Texas

Description: The SH 99 Grand Parkway Segment B-1 IH 45S Interchange project involves the construction of four direct connectors (toll) from IH 45S to ~0.6 miles west of IH 45S.

Project Details:

- CSJ: 3510-01-003
- Project Type: Design-Bid-Build (DBB)
- Let Date: Feb 2028



Adjacent Project - FM517 - Project Overview

CSJ 1002-01-006 in Brazoria County

CSJ 1002-02-016 in Galveston County

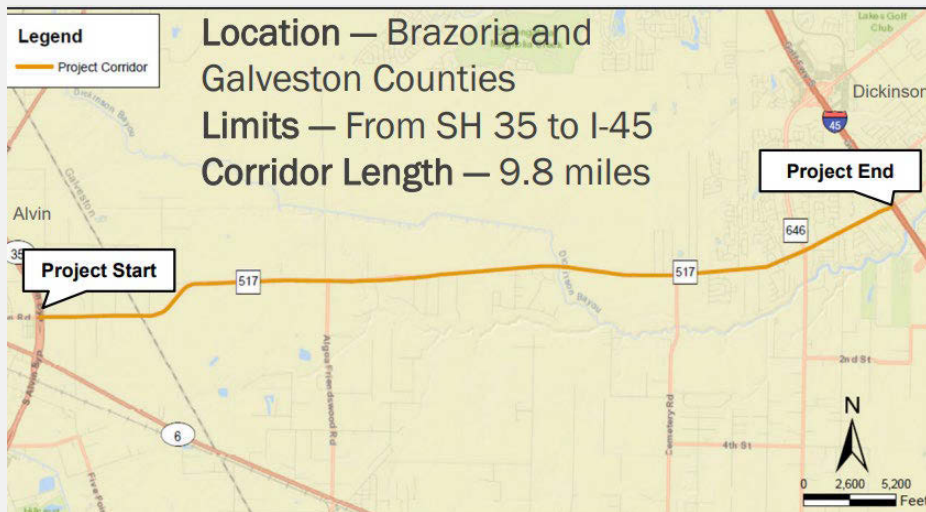
CSJ 0978-01-048 in Galveston County

The project limits extend on FM 517 from SH 35 to I-45S between Alvin and Dickinson in Brazoria and Galveston Counties.

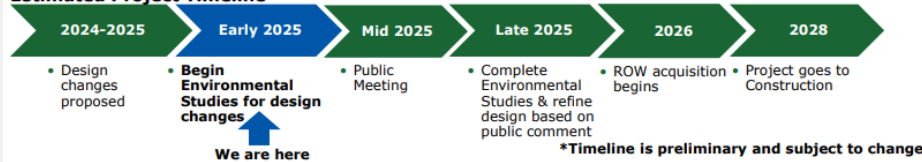
Approximately 9.8 miles.

Proposed improvements on FM 517 would accommodate future anticipated traffic demand and growth in the region.

Letting Date: December 2027

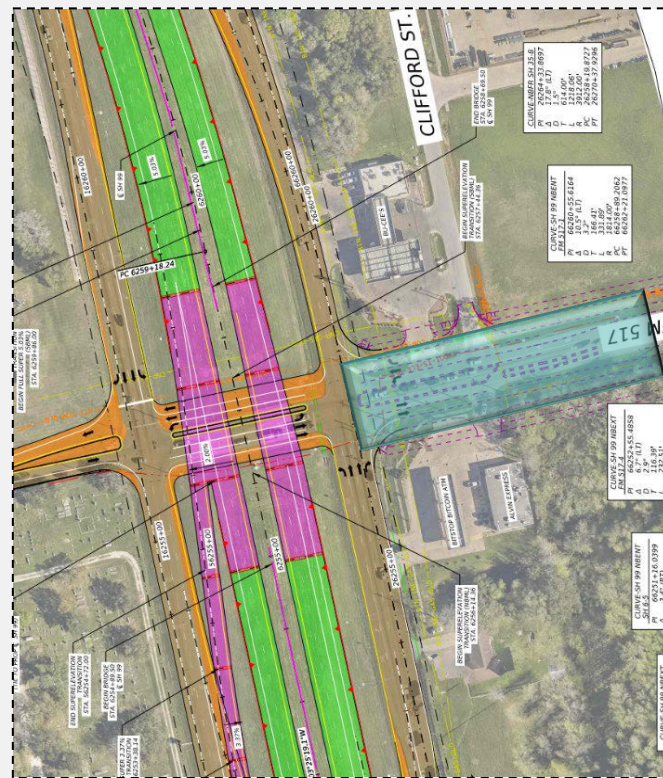


Estimated Project Timeline*



Adjacent Project - FM517 - Project Overview

Schematic – SH99 Segment B1/FM517 Interchange

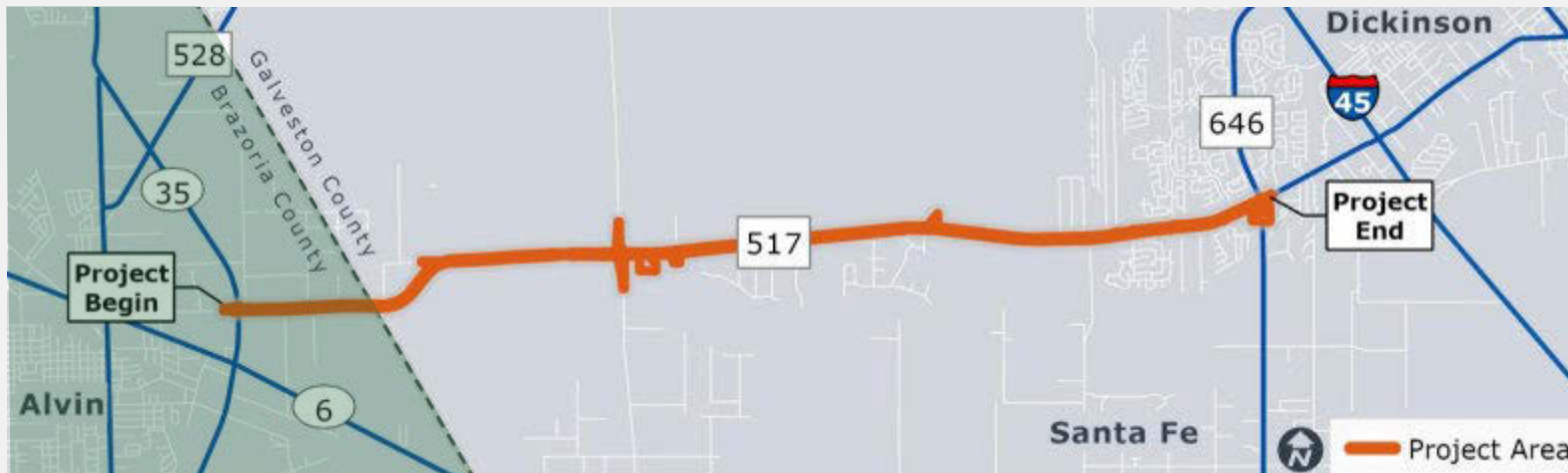


The image corresponds to the 60% schematic.

The 2016 schematic does not depict the northbound on-ramp

FM517 Adjacent Project

Utility owners list at the intersection:



County	Brazoria	Galveston
CSJ	1002-01-006	1002-02-016
Utility Owners	with the preliminary UCM received, 22 Utility Owners are identified.	with the preliminary UCM received, 22 Utility Owners are identified

**FM 517 from SH 35 to I-45 Project Site :**

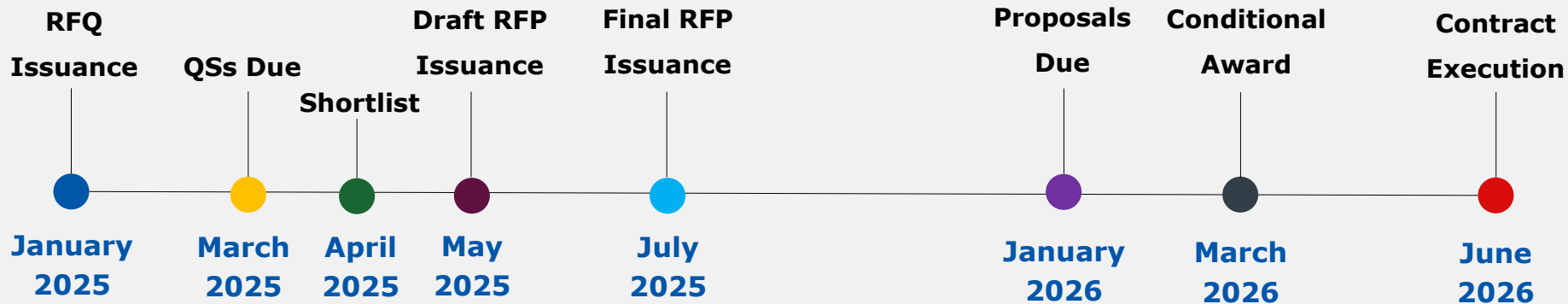
<https://www.txdot.gov/projects/projects-studies/houston/fm517-from-sh35-to-i45.html>





SH 99 Grand Parkway Segment B-1 Project Status

Timeline



Status of Utilities

Subsurface Utility Engineering (SUE) / Utility Conflict Matrix (UCM):

- Final SUE information was provided in the RIDs during February 2025
- Final UCM was provided in the RIDs during February 2025

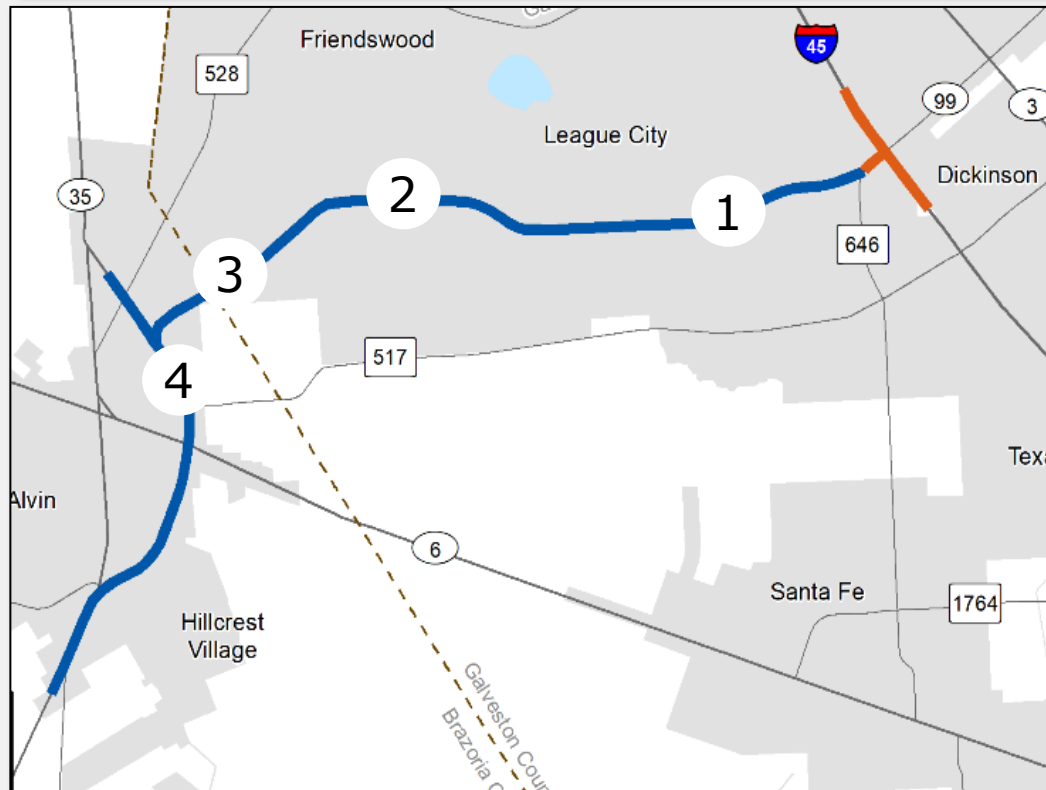
Early Utility Coordination

- Early utility coordination with 15 utility owners commenced in June 2024.
- TxDOT schematic reflects a substantial amount of Avoid-Minimize-Accommodate (AMA)
- Relevant files and meeting notes will be uploaded to the RIDs during the RFP phase
- Utility kick-off meetings were held with the City of Alvin and the City of League City

Early Utility Coordination

- Air Liquide Large Industries U.S. LP
- Air Products and Chemicals, Inc.
- Buckeye Partners, L.P.
- CenterPoint Energy Inc. (Electric Transmission)
- Chevron Phillips Chemical Company LLC
- Denbury Green Pipeline-Texas LLC
- The DOW Chemical Company
- Energy Transfer LP
- Enterprise Products Partners L.P.
- Equistar Chemicals, LP
- ExxonMobil Pipeline Company LLC
- Kinder Morgan Tejas Pipeline LLC
- Phillips66 Company
- Shell Pipeline Company LLC (Concha Chemical Pipeline LLC)
- Texas New Mexico Power (Electric Transmission)

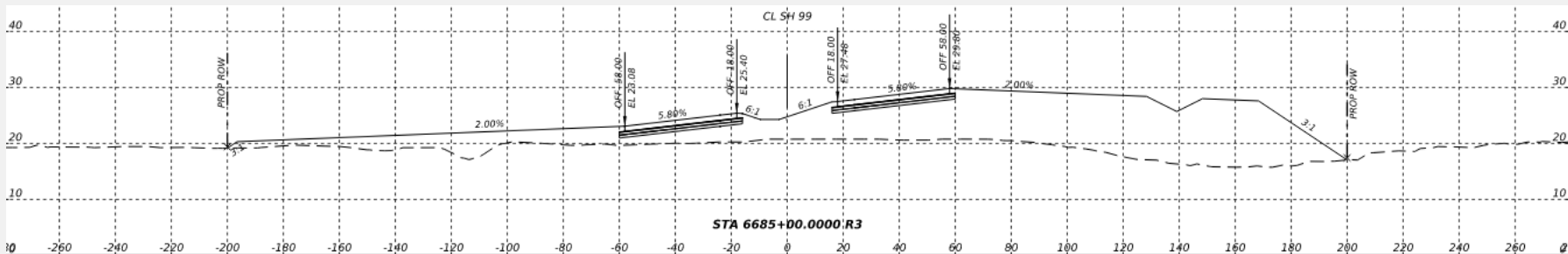
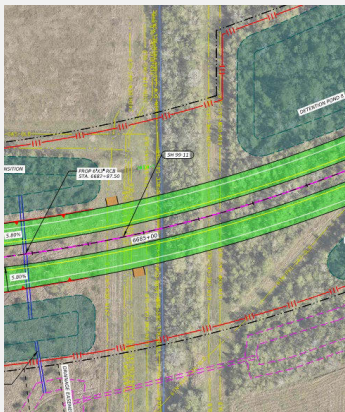
Early Utility Coordination - Schematic Avoid-Minimize-Accommodate (AMA)



- 1 (10) Pipeline Corridor-
Drainage, Profile & Fill
- 2 Pipelines and Sanitary-
Bridge, Drainage, Profile & Offsite
Developer
- 3 (7) Pipeline Corridor-
Bridge & Drainage
- 4 (6) Pipeline Corridor-
Detention, Drainage, Fill

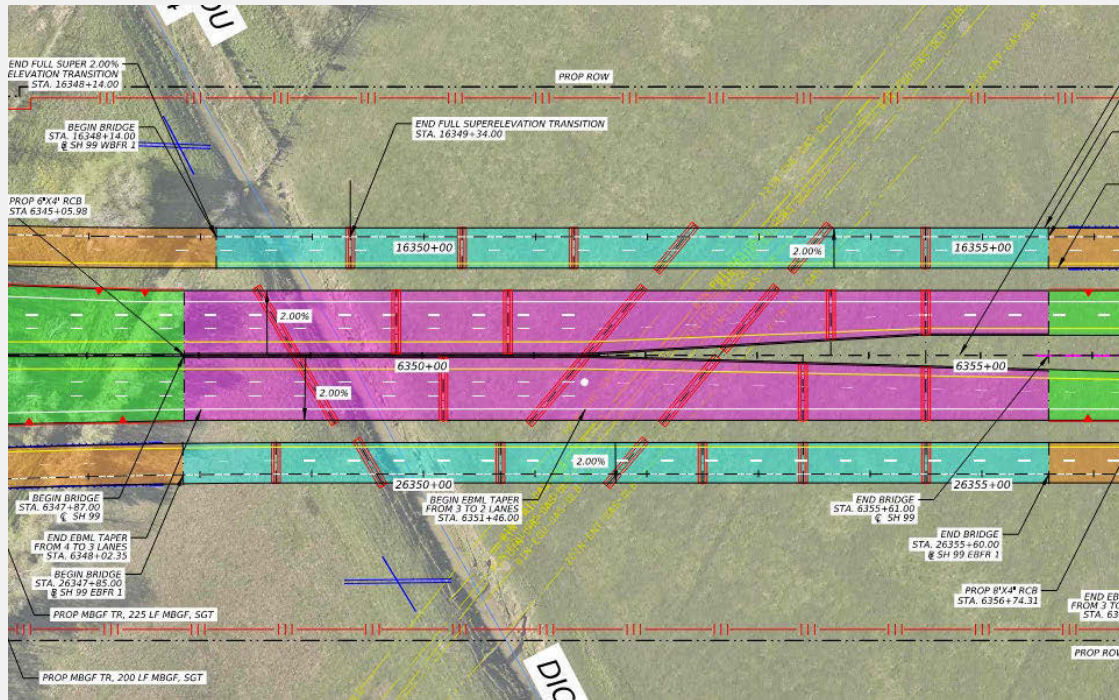
Early Utility Coordination - Schematic AMA examples

1 (10) Pipeline Corridor - Utility Owners and TxDOT Coordination - Drainage, Profile, & Fill



Early Utility Coordination - Schematic AMA examples

3 (7) Pipeline Corridor - Utility Owners and TxDOT Coordination - Bridge & Drainage





DESIGN-BUILD UTILITY PROCESS

Design-Build Utility Process

Utility Process Overview

- Design-Bid-Build (traditional) vs. Design-Build
- Roles and Responsibilities
- Types of Agreements
- Opportunities for Reimbursement
- TxDOT Utility Permits
- Communication with Proposers

Design-Build Utility Process

Design-Build (DB) Method

- Utility Agreements
 - Between DB Contractor (DBC) and Utility Owner
- Utility Design
 - After project award by DBC or Utility Owner
- Utility Easements (permanent and construction)
 - After project award by DBC or Utility Owner
- Utility Relocations
 - During active roadway construction
 - Cost – DBC and Utility Owner
 - Schedule – DBC responsible

Design-Bid-Build (DBB) Method (Traditional)

- Utility Agreements
 - Between TxDOT and Utility Owner
- Utility Design
 - Prior to contract award by Utility Owner
- Utility Easements
 - Prior to contract award by Utility Owner
- Utility Relocations
 - Prior to contract award by Utility Owner
 - Cost – Eligibility Ratio calculated
 - Schedule – Dictated by TxDOT

Design-Build Process

TxDOT Responsibilities

- Verify all PUAA's comply with relevant State and Federal Law, Codes, and Regulations, including Buy America
- Verify all Utility Adjustments comply with Utility Accommodation Rules (UAR)
- Coordinate with Design-Builder the review and processing of Utility Agreements
- Participate in Design-Builder Utility Owner meetings

Design-Build Process

Utility Owner's Responsibilities

- Coordinate with Design-Build Contractor
- Provide point of contact for project issues and information
- Enter into PUAA's with Design-Build Contractor
- Provide resources to meet the anticipated construction schedule
- Address utility adjustments or cause adjustments to be performed
- Comply with UAR
- Comply with Buy America requirements

Design-Build Process

Design-Build Contractor's Responsibilities

- Coordinate and cooperate with utility owners
- Identify utility conflicts
- Coordinate all utility work, including permits
- Prepare and execute PUAA's
- Compensate utility owner for eligible adjustment costs
- Comply with UAR
- Comply with Utility owners written standards and specifications
- Comply with Buy America requirements
- Comply with utility agreements

Design-Build Process

Types of Agreements

- Project Utility Adjustment Agreement (PUAA)
 - Required for all Utility Adjustments on the project
 - Reimbursement payments will come from DB Contractor
 - TxDOT will be a signatory and third-party beneficiary
- Utility Adjustment Agreement Amendment (UAAA)
 - PUAA is amended to add or change scope
- Abbreviated Utility Assembly (AUA)
 - Remain in place facilities

Design-Build Process

Design-Builder or Owner Managed

- PUAA-OM (Owner Managed)
 - Owner performs and manages the utility construction and DB Contractor inspects
- PUAA-DM (Design-Builder Managed)
 - DB Contractor performs and manages the utility construction and Owner inspects.
 - Owner can provide a list of pre-qualified contractors

Design-Build Process

Reimbursement

- Utility is located within an Existing Utility Property Interest
 - Up to 100% reimbursement for eligible costs
- SH99 B-1 Designated Toll
 - Up to 50% reimbursement for eligible costs
- Cost associated with betterment is the responsibility of the utility owner

Eligible Costs do Not Include

- Elective Betterment
- Certain overhead and other costs not directly related to the adjustment

Design-Build Process

TxDOT Utility Permits (RULIS)

- New installations and repair work still go through normal TxDOT permit process (RULIS)
- New Utilities thru RULIS during procurement will be provided to the DB Contractor
- Designs will be reviewed and coordinated by Design-Builder and TxDOT for compatibility with proposed roadway design
- All work within ROW will be coordinated with Design-Builder

Utility Owners and Design Build Teams

Rules of Communication

DB Proposers may contact Utility Owners to discuss issues relating to the Project so long as the Proposer provides a written notice to TxDOT no later than three Business Days in advance of each such meeting.

DB Proposers with questions of TxDOT, must submit such to the project email address at:

txdot-hou-ald-sh99segb1@txdot.gov

Utility Owners with questions of TxDOT, must submit such to the project PM email address at:

kenneth.shirley@txdot.gov

(Utility Owners w/FM 517 Questions : Contact Renee.Laurendine@txdot.gov or PM Amer.Qureshi@txdot.gov)

Design Build Teams

Design-Build Teams	Partners	Utility Manager
Ferrovial Construction-Webber 99	Ferrovial Construction US Corp. Webber, LLC	Cristino Martinez, PMP ®, M.Sc. C: 817-913-4065 cmartinezquevedo@ferrovial.us
Fluor Enterprises, Inc.	Fluor Enterprises, Inc.	Juan Vasquez C: 979-473-9943 Juan.vasquez@wv-consulting.com
WBCCI, LLC	WBCCI, LLC	Vineeta Jayaram C: 832-330-6400 Vram@cobb fendley.com

Project Websites



GPTC Segment B -

<https://www.txdot.gov/projects/projects-studies/houston/sh99-grand-parkway/overview/segment-b.html>



SH 99 Grand Parkway Segment B-1 Design-Build:

<https://www.txdot.gov/business/road-bridge-maintenance/alternative-delivery/sh99-grand-parkway-segb1.html>





Thank you