

**ENVIRONMENTAL ASSESSMENT
VOLUME 3**



NUECES, KLEBERG, KENEDY, WILLACY, AND CAMERON COUNTIES

CSJ: 1111-07-004

Prepared by:

**US Department of Transportation
Federal Highway Administration
Texas Division
And
Texas Department of Transportation
Corpus Christi and Pharr Districts**

June 2012

VOL. 3 APPENDIX A LIST OF FIGURES

Figure A.4.2-1 Community Cohesion 2

Figure A.4.2-2 Community Cohesion 4

Figure A.4.2-3 Community Cohesion 6

Figure A.4.2-4 Community Cohesion 8

Figure A.4.2-5 Visual Quality and Aesthetics 10

Figure A.4.2-6 Visual Quality and Aesthetics 12

Figure A.4.2-7 Visual Quality and Aesthetics 14

Figure A.4.2-8 Visual Quality and Aesthetics 16

Figure A.4.2-9 Visual Quality and Aesthetics 18

Figure A.4.2-10 Visual Quality and Aesthetics 20

Figure A.4.2-11 Visual Quality and Aesthetics 22

Figure A.4.2-12 Visual Quality and Aesthetics 24

Figure A.4.4-1 Existing Land Use 26

Figure A.4.4-2 Existing Land Use 28

Figure A.4.4-3 Existing Land Use 30

Figure A.4.4-4 Existing Land Use 32

Figure A.4.4-5 Existing Land Use 34

Figure A.4.4-6 Existing Land Use 36

Figure A.4.5-1 Prime Farmland Soils, Floodplains, Waters of the U.S., and Endangered
Plant Locations 38

Figure A.4.5-2 Prime Farmland Soils, Floodplains, Waters of the U.S., and Endangered
Plant Locations 40

Figure A.4.5-3 Prime Farmland Soils, Floodplains, Waters of the U.S., and Endangered
Plant Locations 42

Figure A.4.5-4 Prime Farmland Soils, Floodplains, Waters of the U.S., and Endangered
Plant Locations 44

Figure A.4.5-5 Prime Farmland Soils, Floodplains, Waters of the U.S., and Endangered
Plant Locations 46

Figure A.4.5-6 Prime Farmland Soils, Floodplains, Waters of the U.S., and Endangered
Plant Locations 48

Figure A.4.5-7 Prime Farmland Soils, Floodplains, Waters of the U.S., and Endangered
Plant Locations 50

Figure A.4.5-8 Prime Farmland Soils, Floodplains, Waters of the U.S., and Endangered
Plant Locations 52

Figure A.4.5-9 Prime Farmland Soils, Floodplains, Waters of the U.S., and Endangered
Plant Locations 54

Figure A.4.5-10 Prime Farmland Soils, Floodplains, Waters of the U.S., and Endangered
Plant Locations 56

Figure A.4.5-11 Prime Farmland Soils, Floodplains, Waters of the U.S., and Endangered
Plant Locations 58

Figure A.4.5-12 Prime Farmland Soils, Floodplains, Waters of the U.S., and Endangered
Plant Locations 60

Figure A.4.5-13 Prime Farmland Soils, Floodplains, Waters of the U.S., and Endangered
Plant Locations 62

Figure A.4.5-14 Prime Farmland Soils, Floodplains, Waters of the U.S., and Endangered
Plant Locations 64

Figure A.4.5-15 Prime Farmland Soils, Floodplains, Waters of the U.S., and Endangered

	Plant Locations	66
Figure A.4.5-16	Prime Farmland Soils, Floodplains, Waters of the U.S., and Endangered Plant Locations	68
Figure A.4.5-17	Prime Farmland Soils, Floodplains, Waters of the U.S., and Endangered Plant Locations	70
Figure A.4.5-18	Prime Farmland Soils, Floodplains, Waters of the U.S., and Endangered Plant Locations	72
Figure A.4.5-19	Prime Farmland Soils, Floodplains, Waters of the U.S., and Endangered Plant Locations	74
Figure A.4.5-20	Prime Farmland Soils, Floodplains, Waters of the U.S., and Endangered Plant Locations	76
Figure A.4.5-21	Prime Farmland Soils, Floodplains, Waters of the U.S., and Endangered Plant Locations	78
Figure A.4.6-1	Project Area in Relation to Vegetation Regions and Biotic Provinces	80
Figure A.4.7-1	Endangered Plant Locations	82
Figure A.4.7-2	Endangered Plant Locations	84
Figure A.4.10-1	Crossing 1 (Los Olmos Creek)	86
Figure A.4.10-2	Crossing 2 (Unnamed Tributary of Escondido Creek) and Crossing 3 (Escondido Creek)	88
Figure A.4.10-3	Crossing 4 (Santa Gertrudis Creek)	90
Figure A.4.10-4	Crossing 5 (Tranquitas Creek)	92
Figure A.4.10-5	Crossing 6 (San Fernando Creek)	94
Figure A.4.10-6	Crossing 7 (Unnamed Tributary of Carreta Creek) and Crossing 8 (Carreta Creek)	96
Figure A.4.10-7	Crossing 9 (Unnamed Tributary of Carreta Creek)	98
Figure A.4.10-8	Crossing 10 (Petronila Creek)	100
Figure A.4.10-9	Water Quality Segments and Coastal Barrier Resources	102
Figure A.4.12-1	Noise Receivers and Proposed Barrier Nueces County, TX	104
Figure A.4.12-2	Noise Receivers and Proposed Barrier Nueces County, TX	106
Figure A.4.12-3	Noise Receivers and Proposed Barrier Nueces County, TX	108
Figure A.4.12-4	Noise Receivers and Proposed Barrier Nueces County, TX	110
Figure A.4.12-5	Noise Receivers and Proposed Barrier Nueces County, TX	112
Figure A.4.12-6	Noise Receivers and Proposed Barrier Nueces County, TX	114
Figure A.4.12-7	Noise Receivers and Proposed Barrier Nueces County, TX	116
Figure A.4.12-8	Noise Receivers and Proposed Barrier Nueces County, TX	118
Figure A.4.12-9	Noise Receivers and Proposed Barrier Nueces County, TX	120
Figure A.4.12-10	Noise Receivers and Proposed Barrier Nueces County, TX	122
Figure A.4.12-11	Noise Receivers and Proposed Barrier Nueces County, TX	124
Figure A.4.12-12	Noise Receivers and Proposed Barrier Kleberg County, TX	126
Figure A.4.12-13	Noise Receivers and Proposed Barrier Kleberg County, TX	128
Figure A.4.12-14	Noise Receivers and Proposed Barrier Kleberg County, TX	130
Figure A.4.12-15	Noise Receivers and Proposed Barrier Kleberg County, TX	132
Figure A.4.12-16	Noise Receivers and Proposed Barrier Kleberg County, TX	134
Figure A.4.12-17	Noise Receivers and Proposed Barrier Kleberg County, TX	136
Figure A.4.12-18	Noise Receivers and Proposed Barrier Kleberg County, TX	138
Figure A.4.12-19	Noise Receivers and Proposed Barrier Kleberg County, TX	140
Figure A.4.12-20	Noise Receivers and Proposed Barrier Kleberg County, TX	142
Figure A.4.12-21	Noise Receivers and Proposed Barrier Kleberg County, TX	144
Figure A.4.12-22	Noise Receivers and Proposed Barrier Kleberg County, TX	146
Figure A.4.12-23	Noise Receivers and Proposed Barrier Kleberg County, TX	148

Figure A.4.12-24 Noise Receivers and Proposed Barrier Kleberg County, TX..... 150

Figure A.4.12-25 Noise Receivers and Proposed Barrier Kleberg County, TX..... 152

Figure A.4.12-26 Noise Receivers and Proposed Barrier Kleberg County, TX..... 154

Figure A.4.12-27 Noise Receivers and Proposed Barrier Kenedy County, TX..... 156

Figure A.4.12-28 Noise Receivers and Proposed Barrier Willacy County, TX..... 158

Figure A.4.12-29 Noise Receivers and Proposed Barrier Willacy County, TX..... 160

Figure A.4.12-30 Noise Receivers and Proposed Barrier Willacy County, TX..... 162

Figure A.4.12-31 Noise Receivers and Proposed Barrier Willacy County, TX..... 164

Figure A.4.12-32 Noise Receivers and Proposed Barrier Willacy County, TX..... 166

Figure A.4.12-33 Noise Receivers and Proposed Barrier Willacy County, TX..... 168

Figure A.4.12-34 Noise Receivers and Proposed Barrier Willacy County, TX..... 170

Figure A.4.12-35 Noise Receivers and Proposed Barrier Willacy County, TX..... 172

Figure A.4.12-36 Noise Receivers and Proposed Barrier Willacy County, TX..... 174

Figure A.4.12-37 Noise Receivers and Proposed Barrier Willacy County, TX..... 176

Figure A.4.13-1 Potential Hazardous Material Sites 178

Figure A.4.13-2 Potential Hazardous Material Sites 180

Figure A.4.13-3 Potential Hazardous Material Sites 182

Figure A.4.13-4 Potential Hazardous Material Sites 184

Figure A.4.13-5 Potential Hazardous Material Sites 186

Figure A.4.13-6 Potential Hazardous Material Sites 188

Figure A.4.13-7 Potential Hazardous Material Sites 190

Figure A.4.13-8 Potential Hazardous Material Sites 192

Figure A.4.13-9 Potential Hazardous Material Sites 194

Figure A.4.13-10 Potential Hazardous Material Sites 196

Figure A.4.13-11 Potential Hazardous Material Sites 198

Figure A.4.13-12 Potential Hazardous Material Sites 200

Figure A.4.13-13 Potential Hazardous Material Sites 202

Figure A.4.13-14 Potential Hazardous Material Sites 204

Figure A.5.1-1 AOI and Land Use RSA..... 206

Figure A.5.1-2 Kingsville Future Land Use Map..... 208

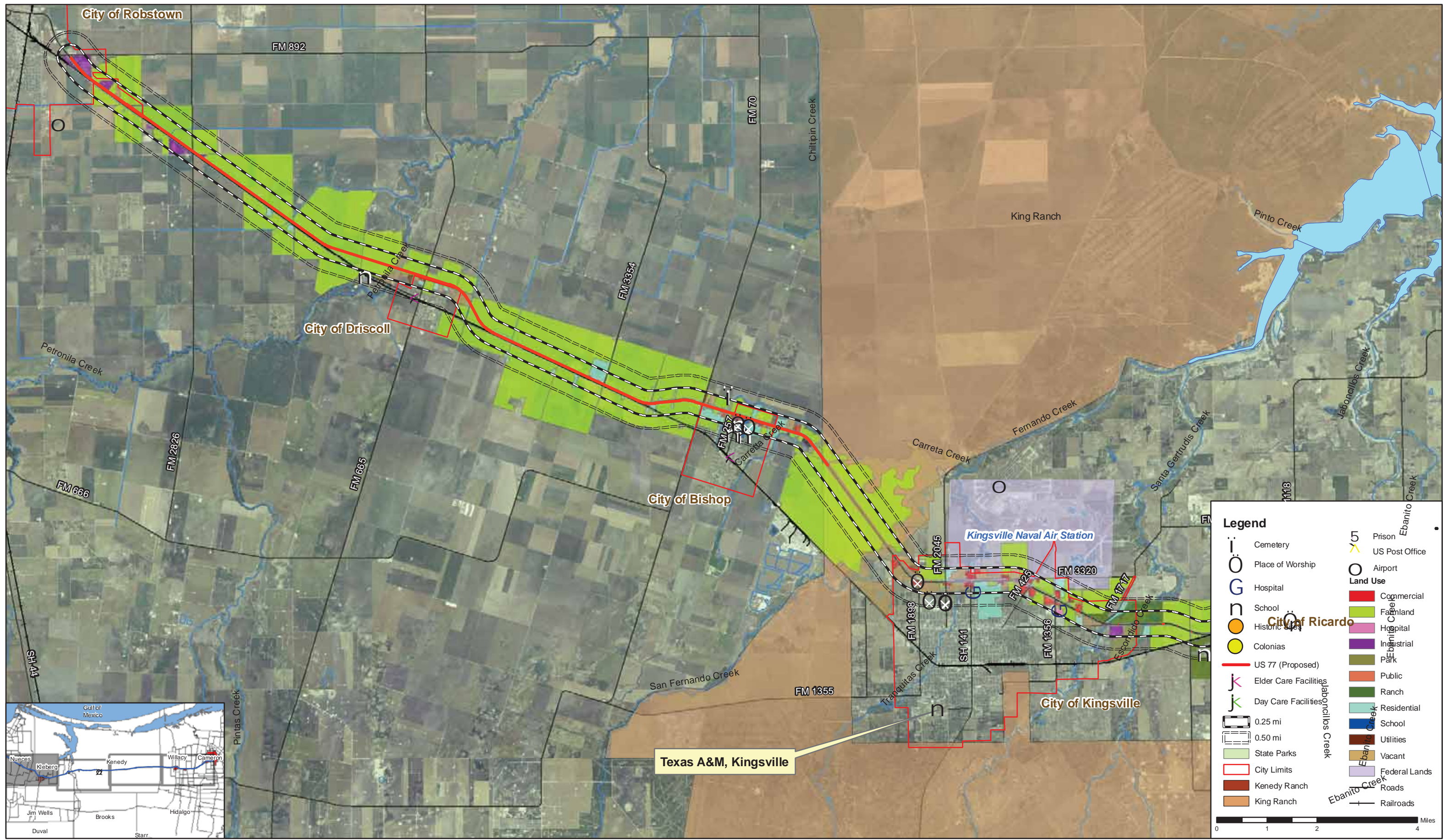
Figure A.5.1-3 Harlingen Future Land Use Map 210

Figure A.6.2-1 Resource Study Area Water Quality, Air Quality, and Endangered Species212

Volume 3 - Appendix A

Figures

Figure A.4.2-1 Community Cohesion



Legend

	Cemetery		Prison
	Place of Worship		US Post Office
	Hospital		Airport
	School	Land Use	
	Historic Sites		Commercial
	Colonias		Farmland
	US 77 (Proposed)		Hospital
	Elder Care Facilities		Industrial
	Day Care Facilities		Park
	0.25 mi		Public
	0.50 mi		Ranch
	State Parks		Residential
	City Limits		School
	Kenedy Ranch		Utilities
	King Ranch		Vacant
			Federal Lands
			Roads
			Railroads

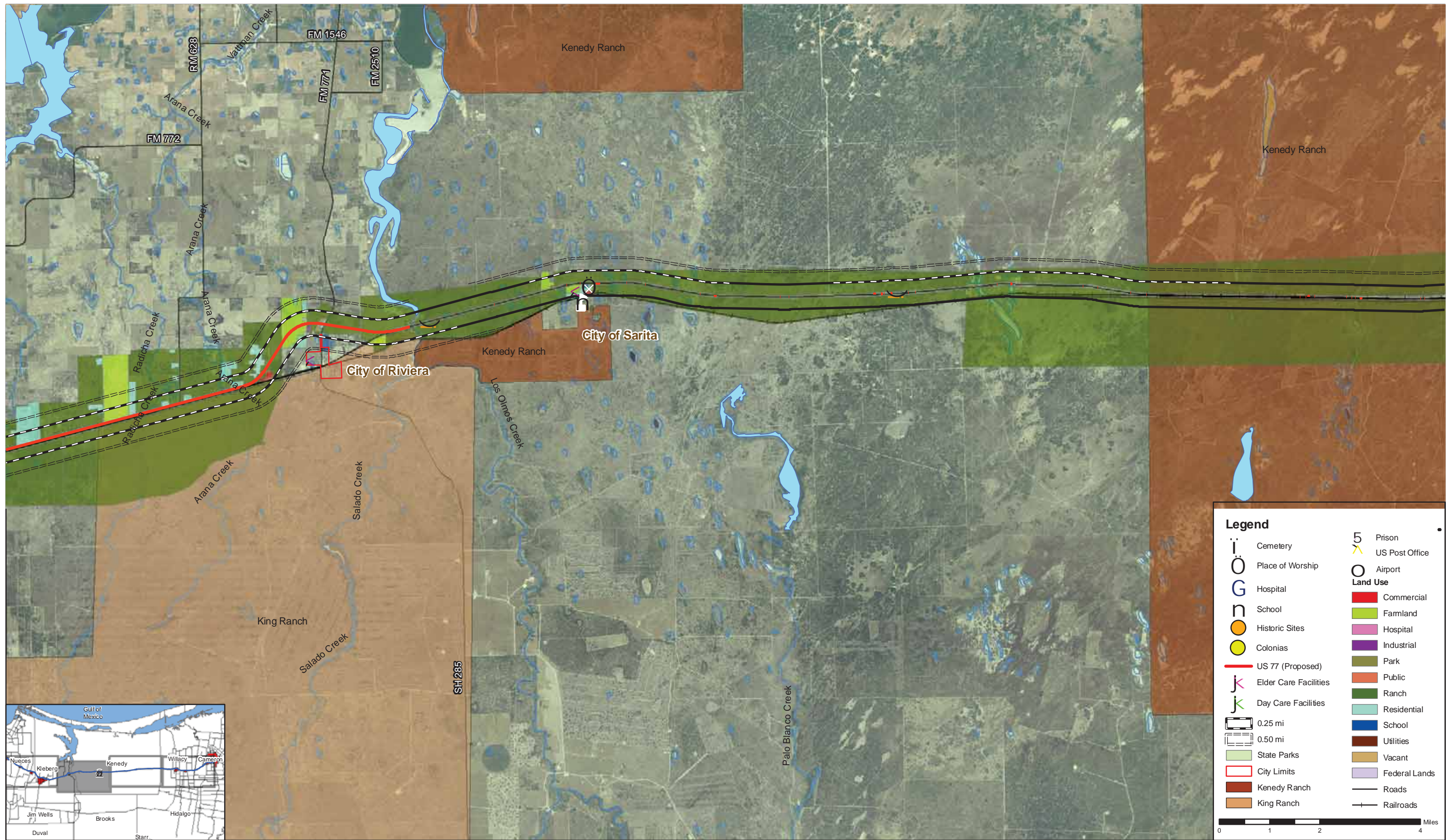
0 1 2 4 Miles



Nueces, Kleberg, Kenedy,
Willacy, and Cameron Counties
CSJ: 1111-07-004

Figure A.4.2-1
Community Cohesion

Figure A.4.2-2 Community Cohesion



Nueces, Kleberg, Kenedy,
Willacy, and Cameron Counties
CSJ: 1111-07-004

Figure A.4.2-2
Community Cohesion

Figure A.4.2-3 Community Cohesion



Legend

i	Cemetery	5	Prison
Ö	Place of Worship	✕	US Post Office
G	Hospital	○	Airport
n	School	Land Use	
○	Historic Sites	■	Commercial
●	Colonias	■	Farmland
—	US 77 (Proposed)	■	Hospital
k	Elder Care Facilities	■	Industrial
k	Day Care Facilities	■	Park
▭	0.25 mi	■	Public
▭	0.50 mi	■	Ranch
■	State Parks	■	Residential
▭	City Limits	■	School
■	Kenedy Ranch	■	Utilities
■	King Ranch	■	Vacant
		■	Federal Lands
		—	Roads
		—	Railroads

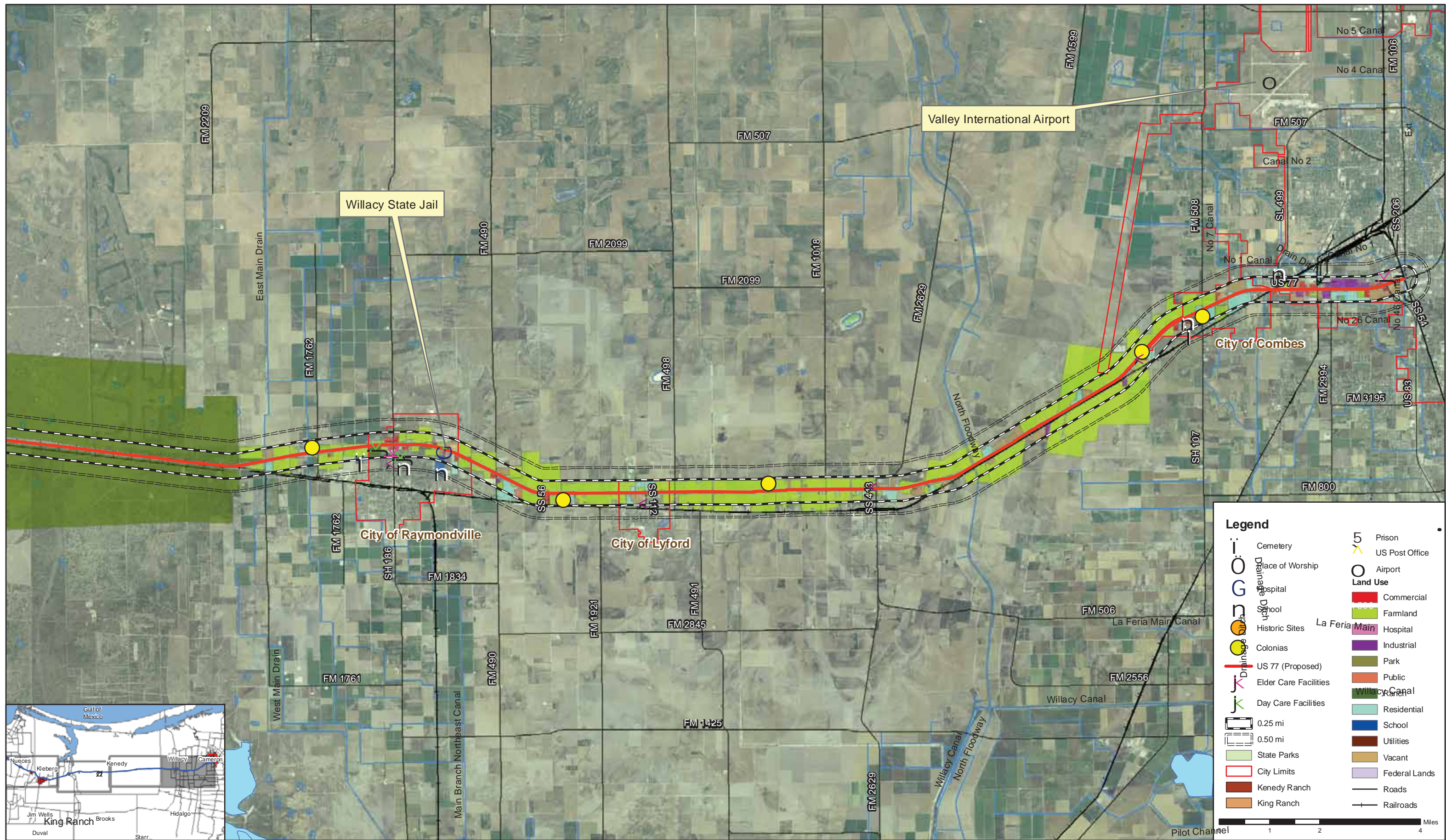
0 1 2 4 Miles



Nueces, Kleberg, Kenedy,
Willacy, and Cameron Counties
CSJ: 1111-07-004

Figure A.4.2-3
Community Cohesion

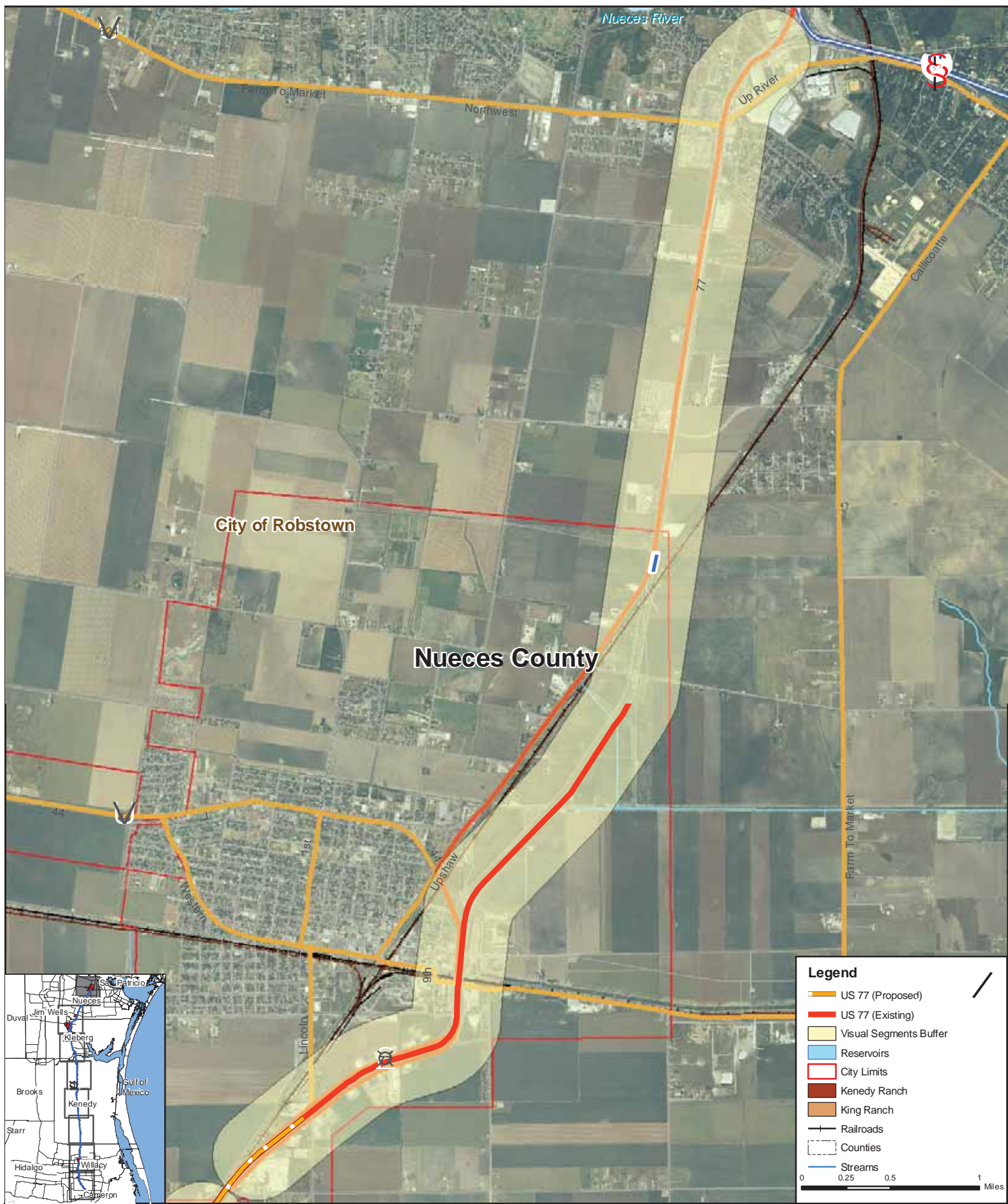
Figure A.4.2-4 Community Cohesion



Nueces, Kleberg, Kenedy,
Willacy, and Cameron Counties
CSJ: 1111-07-004

Figure A.4.2-4
Community Cohesion

Figure A.4.2-5 Aesthetics and Visual Quality



Legend

- US 77 (Proposed)
- US 77 (Existing)
- Visual Segments Buffer
- Reservoirs
- City Limits
- Kenedy Ranch
- King Ranch
- Railroads
- Counties
- Streams

0 0.25 0.5 1 Miles



Nueces, Kleberg, Kenedy,
Willacy, and Cameron Counties
CSJ: 1111-07-004

**Aesthetics and Visual Quality
Figure A.4.2-5**

Segment I: I-37 to CR 36 in Nueces County

Figure A.4.2-6 Aesthetics and Visual Quality

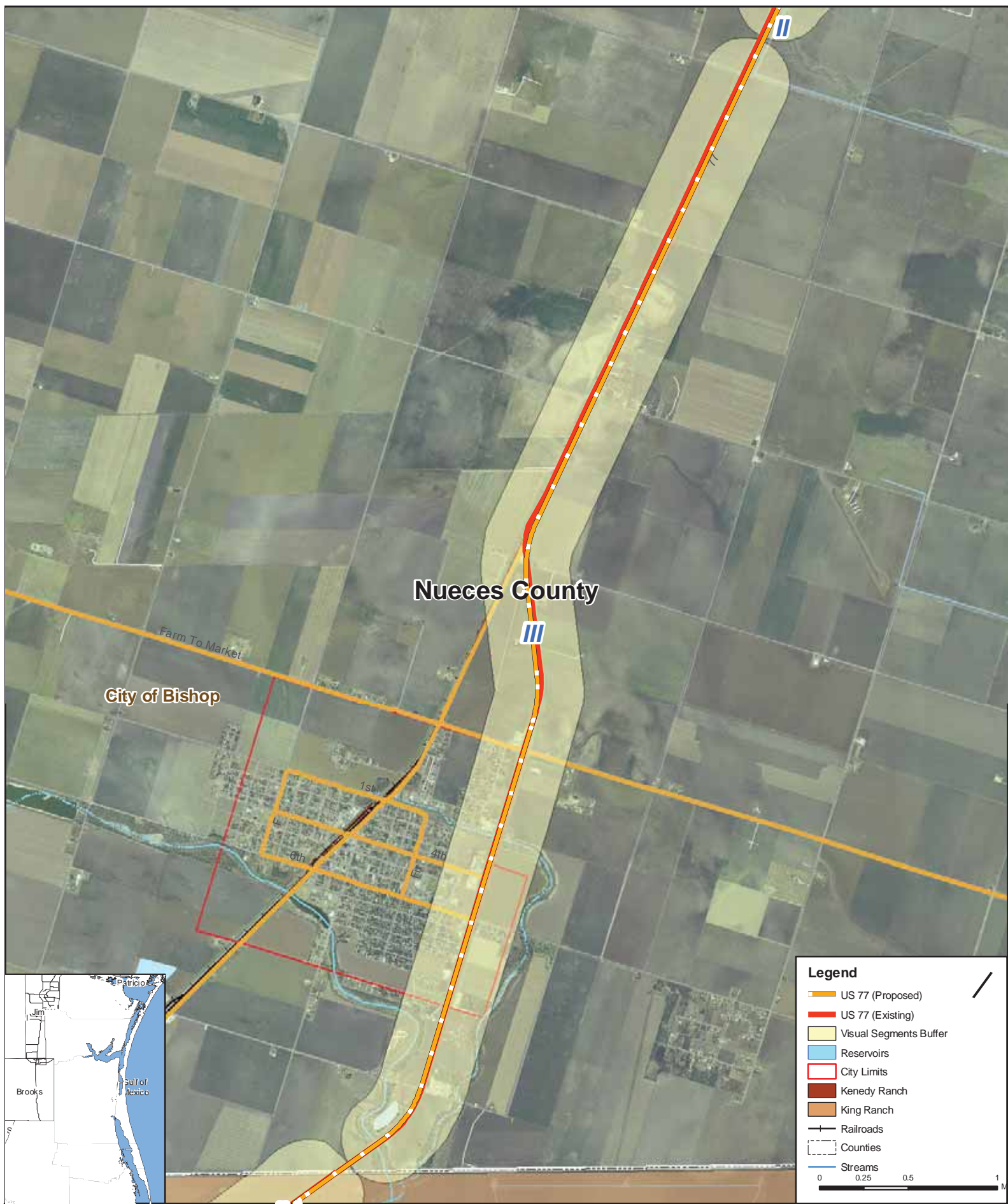


Nueces, Kleberg, Kenedy,
Willacy, and Cameron Counties
CSJ: 1111-07-004

**Aesthetics and Visual Quality
Figure A.4.2-6**

Segment II: South of CR 36 to just south of the Proposed
Driscoll Relief Route in Nueces County

Figure A.4.2-7 Aesthetics and Visual Quality



Nueces County

City of Bishop







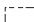



Farm To Market

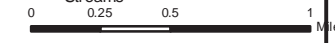
1st

6th

4th

Legend

-  US 77 (Proposed)
-  US 77 (Existing)
-  Visual Segments Buffer
-  Reservoirs
-  City Limits
-  Kenedy Ranch
-  King Ranch
-  Railroads
-  Counties
-  Streams

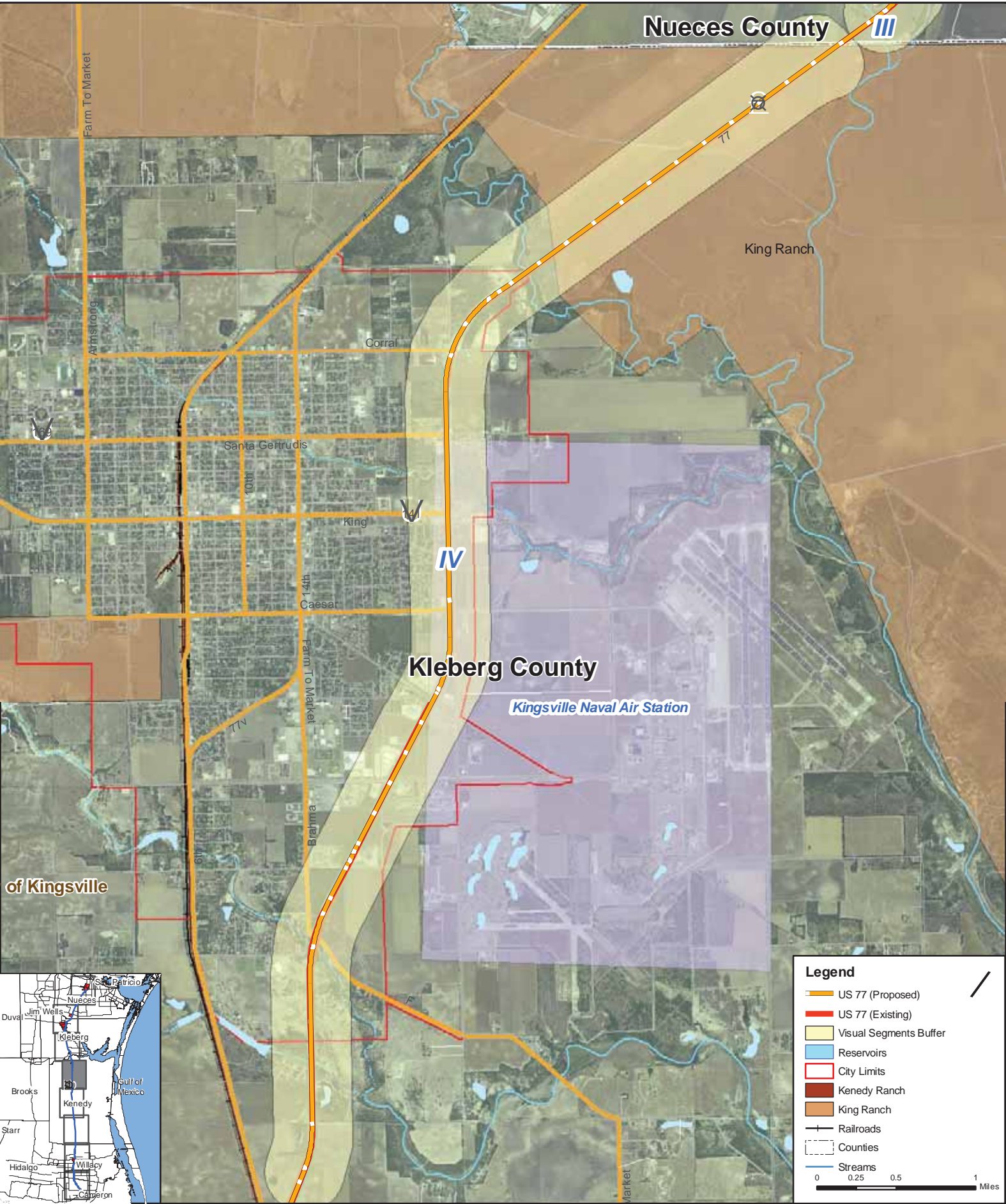


Nueces, Kleberg, Kenedy,
Willacy, and Cameron Counties
CSJ: 1111-07-004

**Aesthetics and Visual Quality
Figure A.4.2-7**

Segment III: Just south of the Proposed Driscoll Relief Route in Nueces County to Nueces/Kleberg County Line

Figure A.4.2-8 Aesthetics and Visual Quality



Nueces County

King Ranch

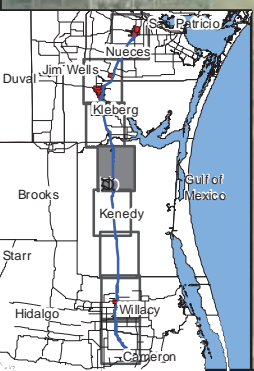
Kleberg County

Kingsville Naval Air Station

of Kingsville

Legend

- US 77 (Proposed)
 - US 77 (Existing)
 - Visual Segments Buffer
 - Reservoirs
 - City Limits
 - Kenedy Ranch
 - King Ranch
 - Railroads
 - Counties
 - Streams
- 0 0.25 0.5 1 Miles

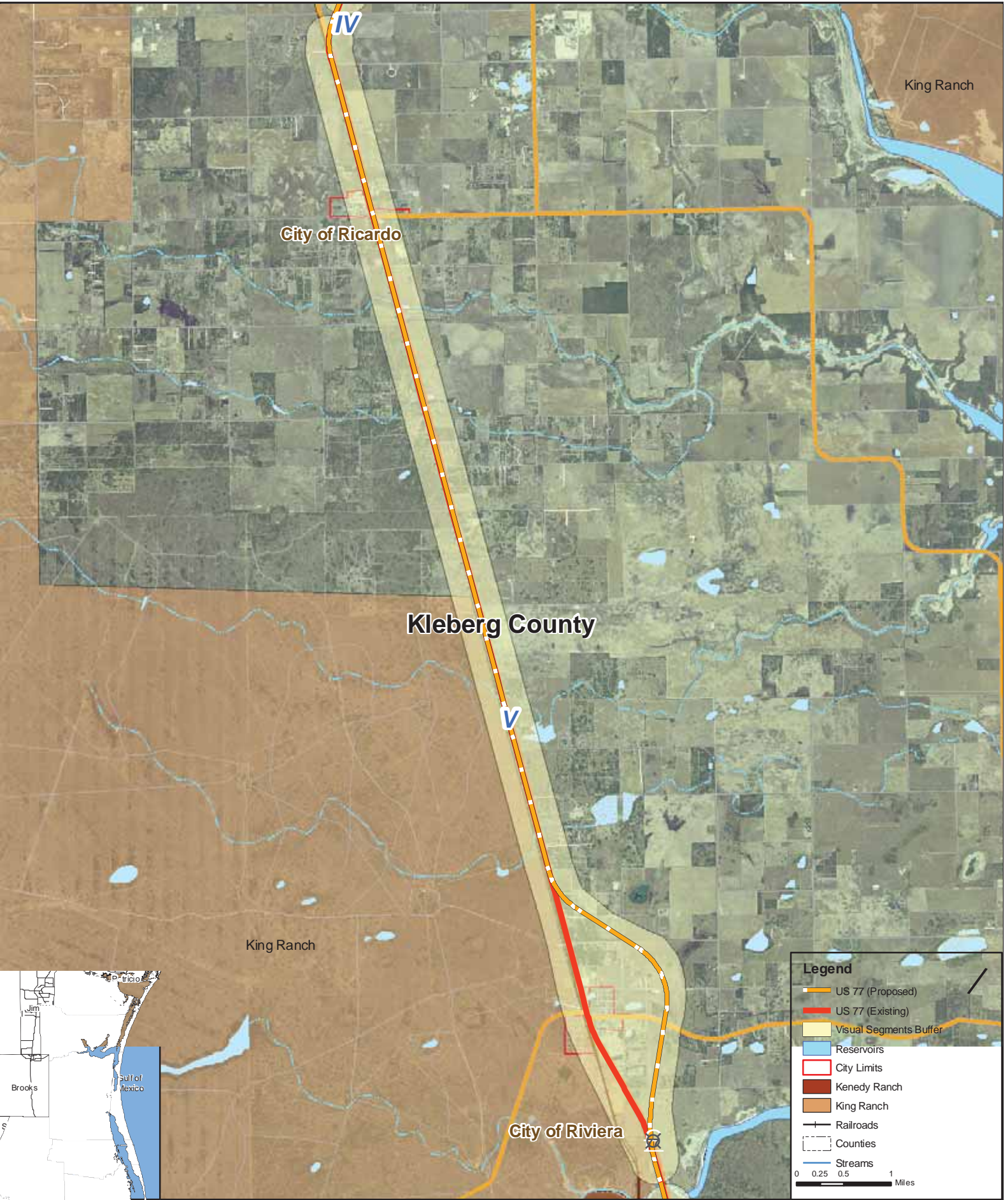


Nueces, Kleberg, Kenedy,
Willacy, and Cameron Counties
CSJ: 1111-07-004

**Aesthetics and Visual Quality
Figure A.4.2-8**

Segment IV: Nueces/Kleberg County Line to FM 772/just south of the existing Kingsville Relief Route in Kleberg County

Figure A.4.2-9 Aesthetics and Visual Quality

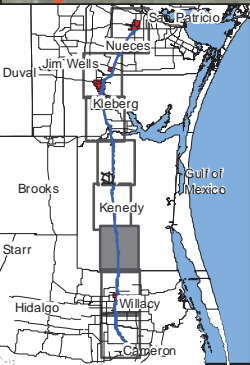
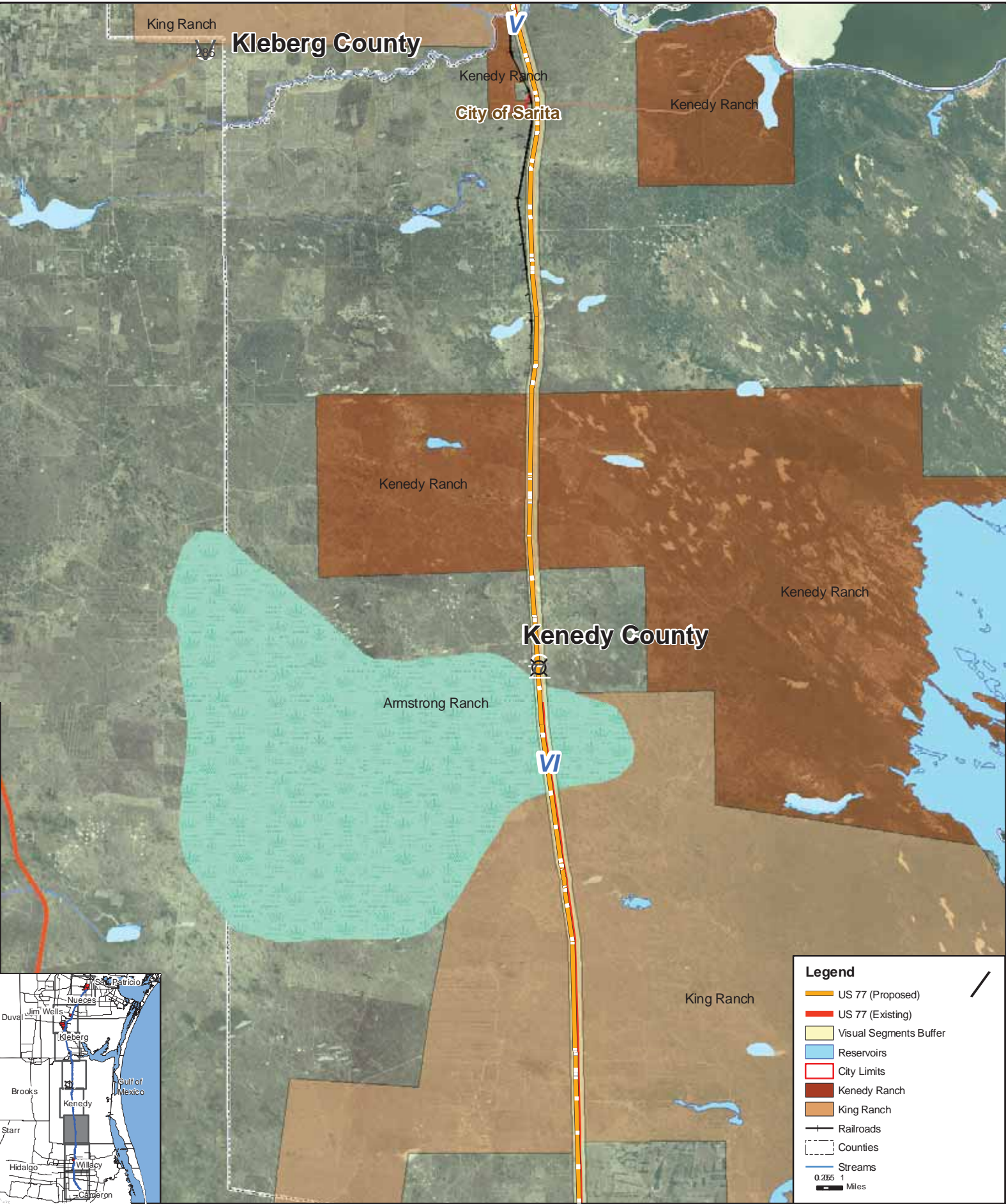


Nueces, Kleberg, Kenedy,
Willacy, and Cameron Counties
CSJ: 1111-07-004

**Aesthetics and Visual Quality
Figure A.4.2-9**

Segment V: FM 772/just south of the existing Kingsville Relief Route in Kleberg County to Los Olmos Creek/Kleberg/Kenedy County Line

Figure A.4.2-10 Aesthetics and Visual Quality



Legend

- US 77 (Proposed)
- US 77 (Existing)
- Visual Segments Buffer
- Reservoirs
- City Limits
- Kenedy Ranch
- King Ranch
- Railroads
- Counties
- Streams

0.255 1 Miles

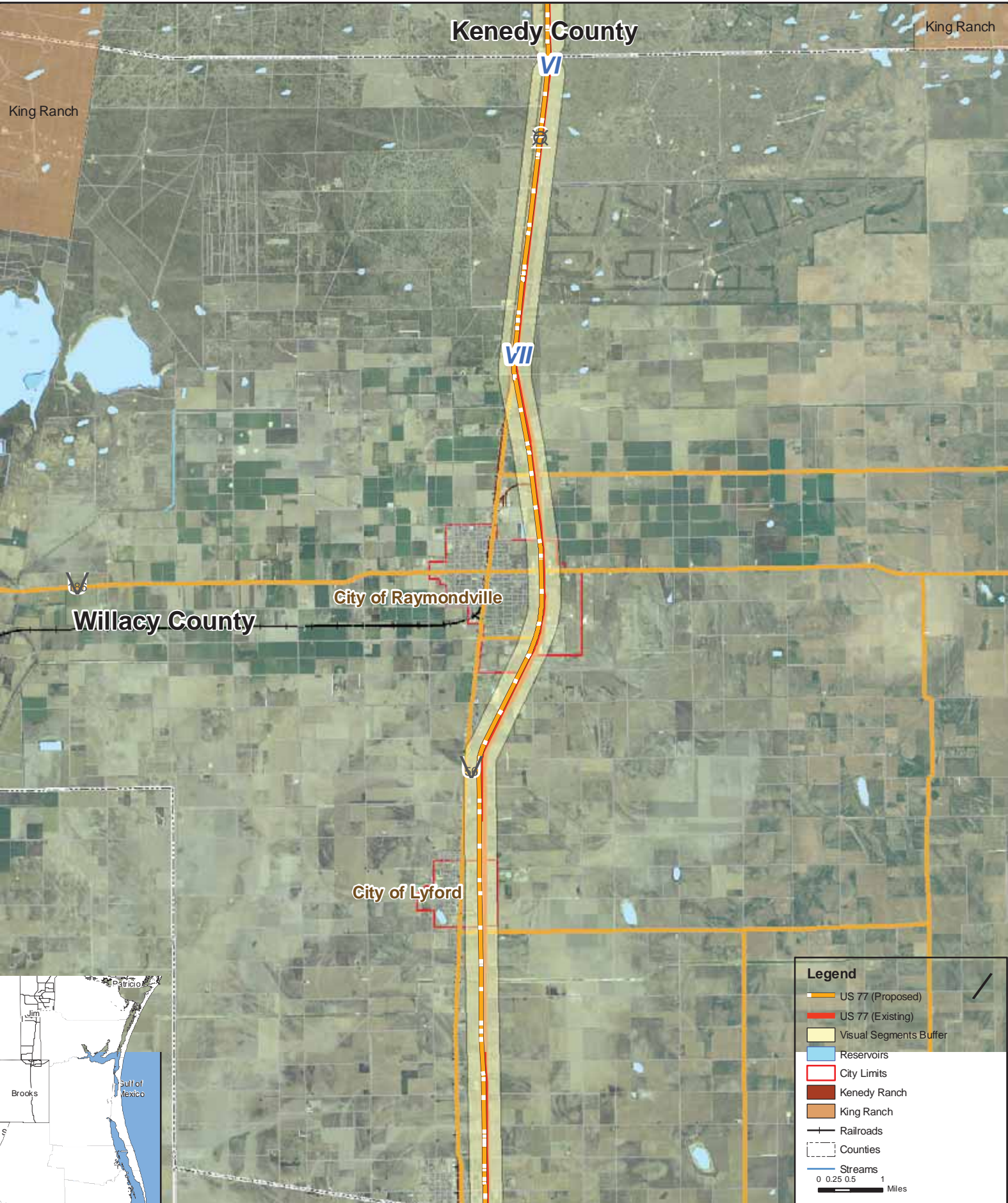


Nueces, Kleberg, Kenedy,
Willacy, and Cameron Counties
CSJ: 1111-07-004

**Aesthetics and Visual Quality
Figure A.4.2-10**

Segment VI: Los Olmos Creek/Kleberg/Kenedy
County Line to Kenedy/Willacy County Line

Figure A.4.2-11 Aesthetics and Visual Quality



Kenedy County

King Ranch

King Ranch

VI

VII

Willacy County

City of Raymondville

City of Lyford

Legend

- US 77 (Proposed)
- US 77 (Existing)
- Visual Segments Buffer
- Reservoirs
- City Limits
- Kenedy Ranch
- King Ranch
- Railroads
- Counties
- Streams

0 0.25 0.5 1 Miles



Nueces, Kleberg, Kenedy,
Willacy, and Cameron Counties
CSJ: 1111-07-004

**Aesthetics and Visual Quality
Figure A.4.2-11**

Segment VII: Kenedy/Willacy County Line to the
Willacy/Cameron County Line

Figure A.4.2-12 Aesthetics and Visual Quality

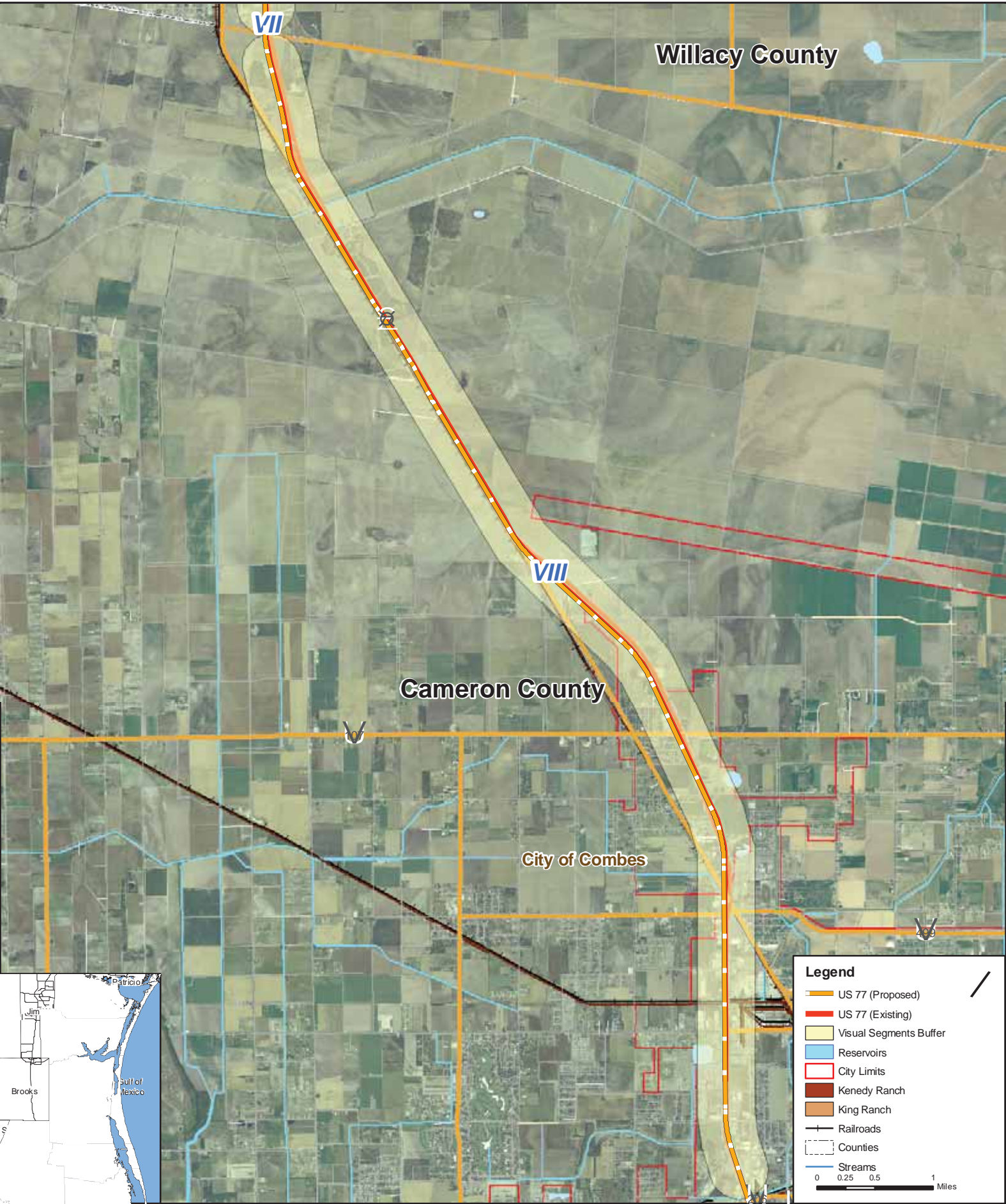
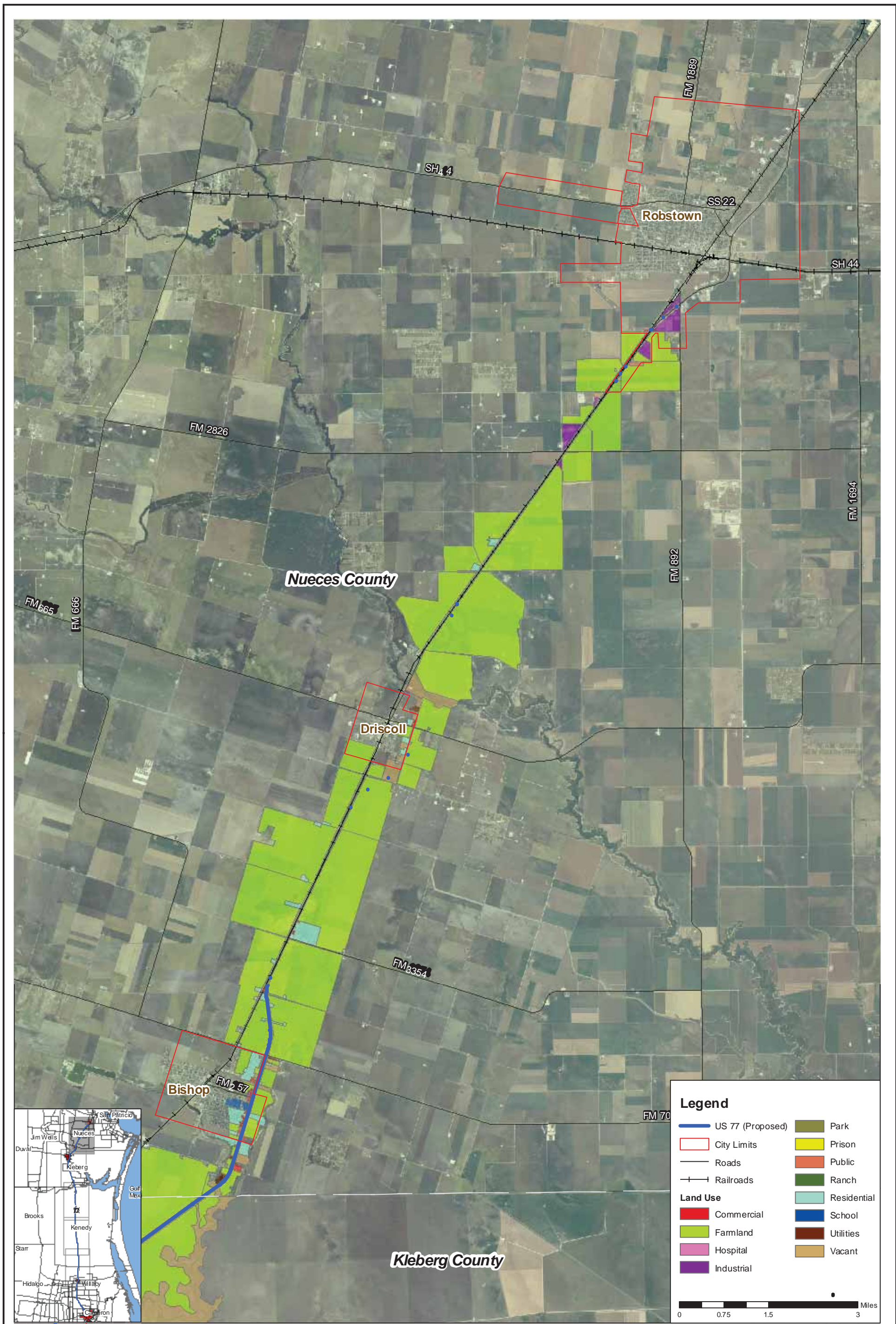


Figure A.4.4-1 Existing Land Use



Legend

US 77 (Proposed)	Park
City Limits	Prison
Roads	Public
Railroads	Ranch
Commercial	Residential
Farmland	School
Hospital	Utilities
Industrial	Vacant

0 0.75 1.5 3 Miles

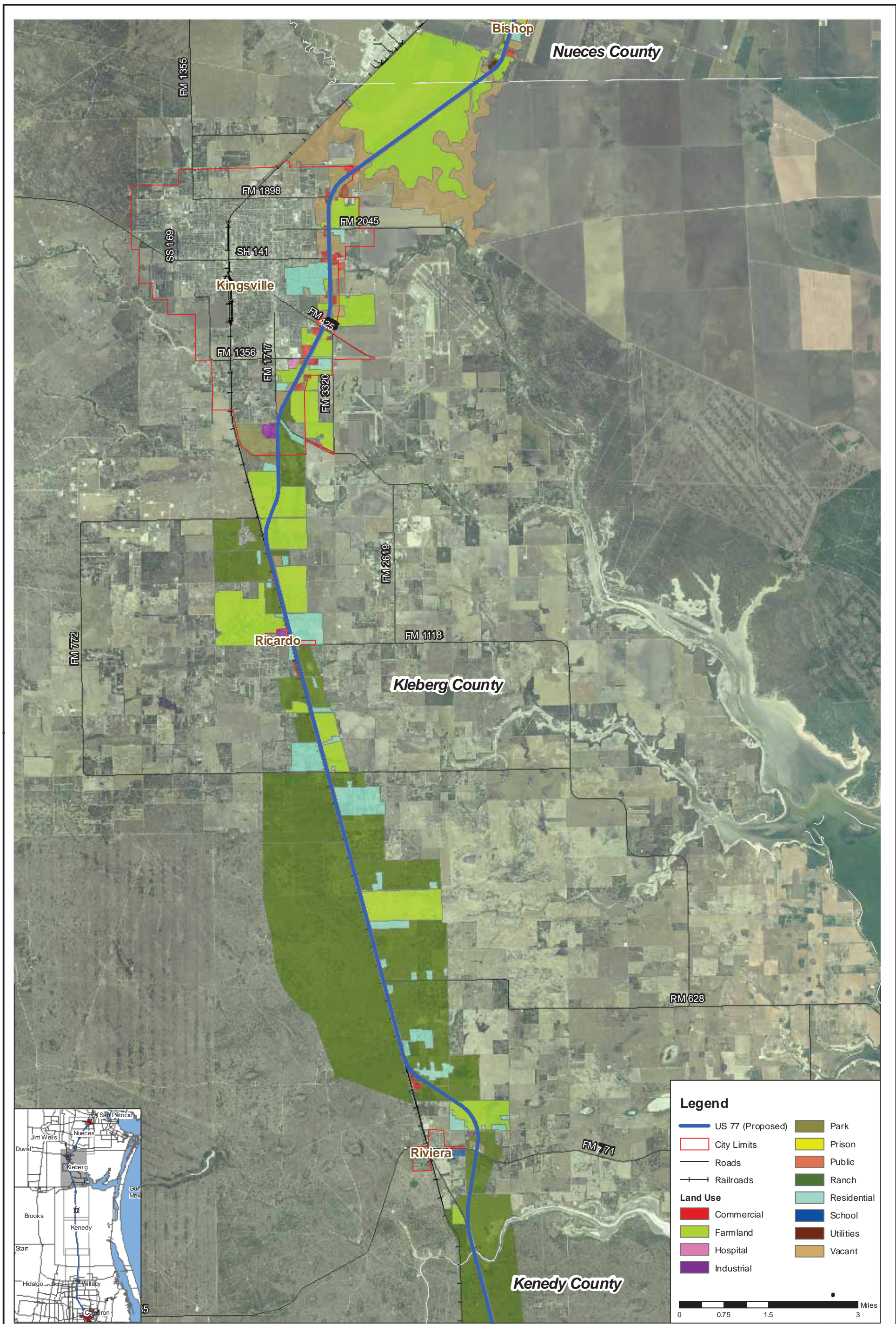


**Nueces, Kleberg, Kenedy,
Willacy, and Cameron Counties
CSJ: 1111-07-004**

**Figure A.4.4-1
Existing Land Use**

Source: TNRIS Aerials(2005)
Jacobs: January 2010

Figure A.4.4-2 Existing Land Use



Legend

- US 77 (Proposed)
- City Limits
- Roads
- + Railroads
- Commercial
- Farmland
- Hospital
- Industrial
- Park
- Prison
- Public
- Ranch
- Residential
- School
- Utilities
- Vacant

0 0.75 1.5 3 Miles



**Nueces, Kleberg, Kenedy,
Willacy, and Cameron Counties
CSJ: 1111-07-004**

**Figure A.4.4-2
Existing Land Use**

Source: TNRIS Aerials(2005)
Jacobs: January 2010

Figure A.4.4-3 Existing Land Use



Nueces, Kleberg, Kenedy,
Willacy, and Cameron Counties
CSJ: 1111-07-004

Figure A.4.4-3
Existing Land Use

Source: TNRIS Aerials(2005)
Jacobs: January 2010

Figure A.4.4-4 Existing Land Use

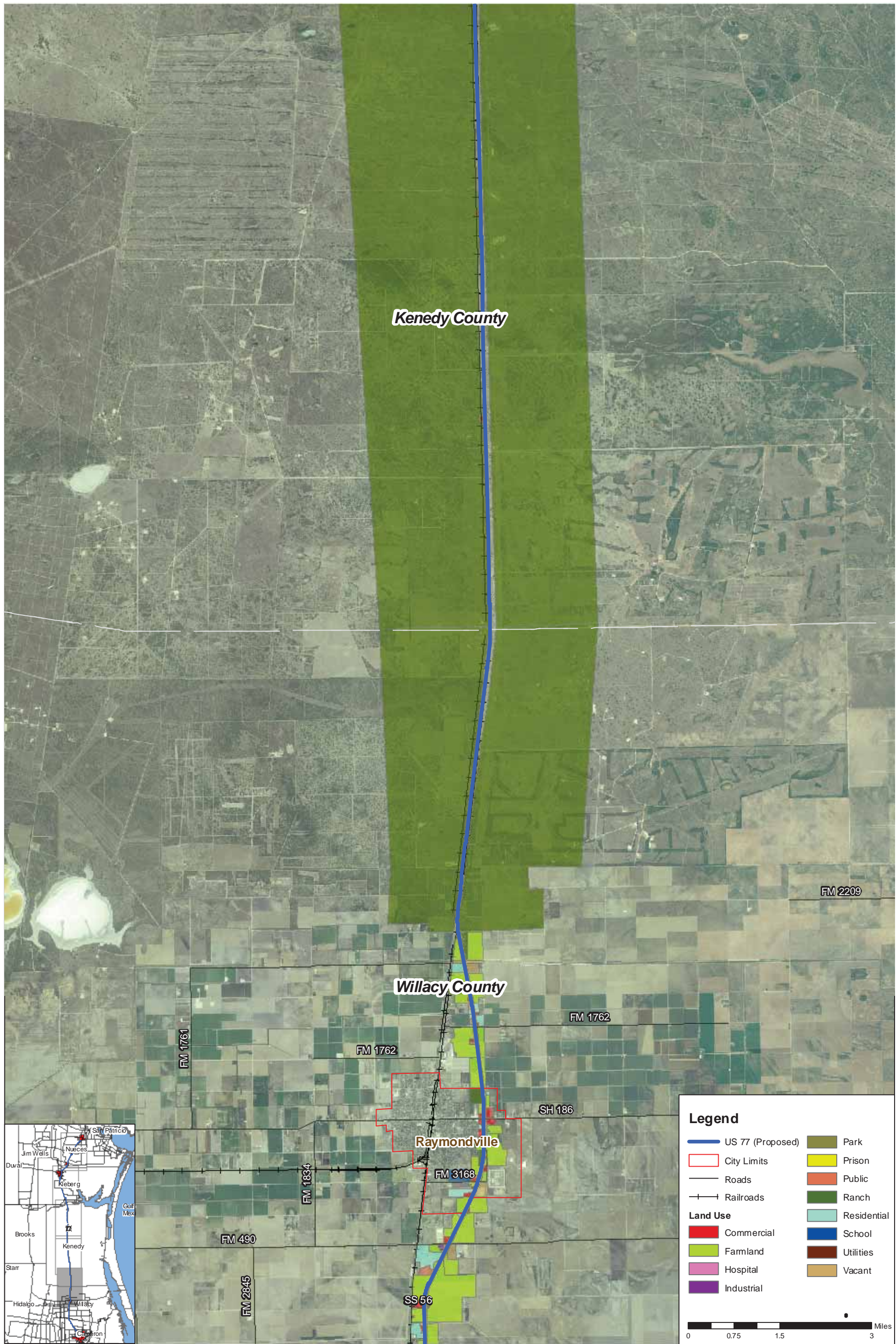


**Nueces, Kleberg, Kenedy,
Willacy, and Cameron Counties**
CSJ: 1111-07-004

Figure A.4.4-4
Existing Land Use

Source: TNRIS Aerials(2005)
Jacobs: January 2010

Figure A.4.4-5 Existing Land Use



Nueces, Kleberg, Kenedy,
Willacy, and Cameron Counties
CSJ: 1111-07-004

Figure A.4.4-5
Existing Land Use

Source: TNRIS Aerials(2005)
Jacobs: January 2010