



Safety

Road to Zero, Safety Is Intentional

Jessica Butler, P.E.



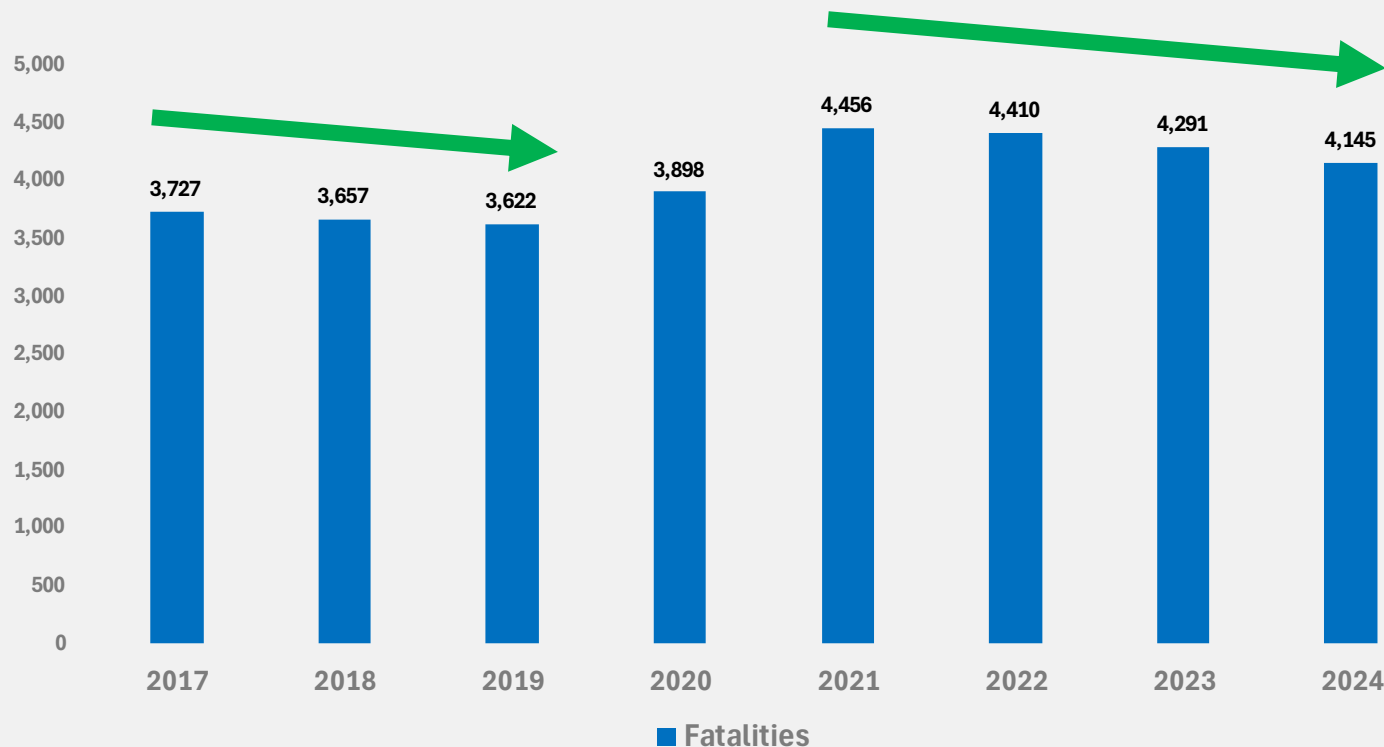
April 25, 2025

2024 Crash Data Facts

- 4,145 fatalities in 2024
- 11.3 avg deaths/per day in 2024
- November 7, 2000, was the last deathless day on Texas roads
- 89,412 lives lost since 11/7/2000



Texas Traffic Fatalities 2017 – 2024

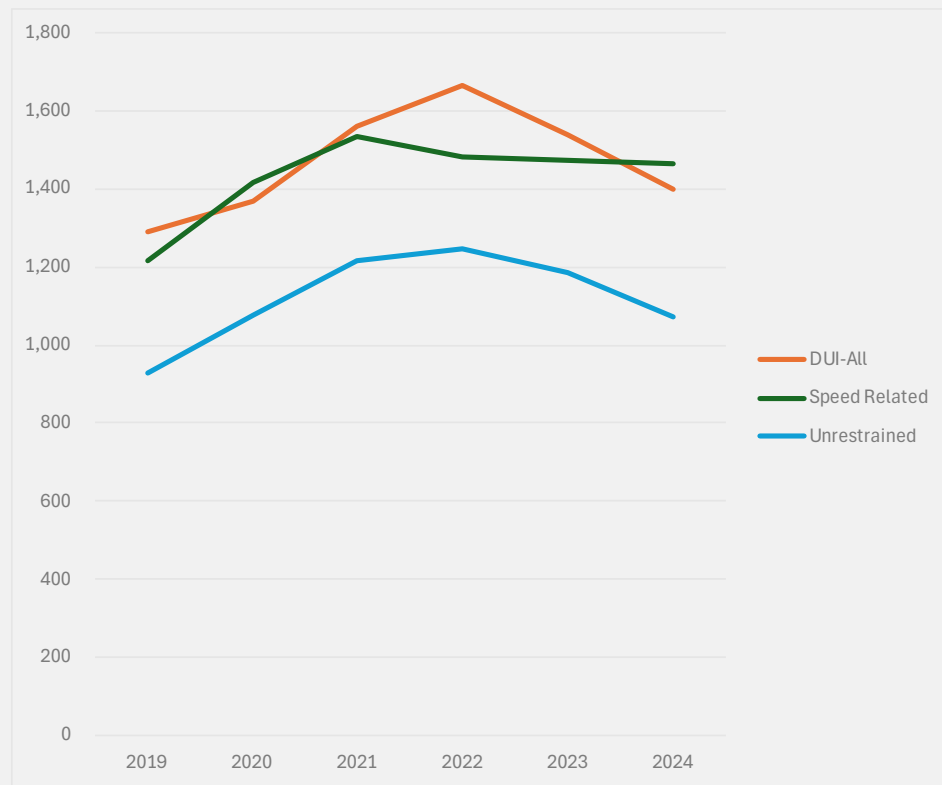


In 2024, traffic-related fatalities were at 4,145 compared with 4,291 lives lost on Texas roadways in 2023. (**▼3.4%**)

Data as of 03/14/2025

2024 Crash Data Facts

- Top emphasis area by fatalities:
 - DUI-All (1,401 - will increase as toxicology reports come in)
 - Speed-related (1,466)
 - Unrestrained (1,170)
- Speed-related and Unrestrained fatalities both rose 16.3% in 2020, however:
 - Speed-related fatalities dropped in 2022, and have plateaued since
 - Unrestrained fatalities **continued to rise** in 2022, but have fallen back to 2020 levels in the last 2-years



2024 Fatalities Summary

Contributing Factor	# Fatalities	% Fatalities
DUI ALL	1,401	33.8%
Speed	1,466	35.4%
Unrestrained	1,070	25.8%/43%
Pedestrian	765	18.5%
Motorcycle	584	14.1%
Work Zone	215	5.2%
Bicycle	78	1.9%

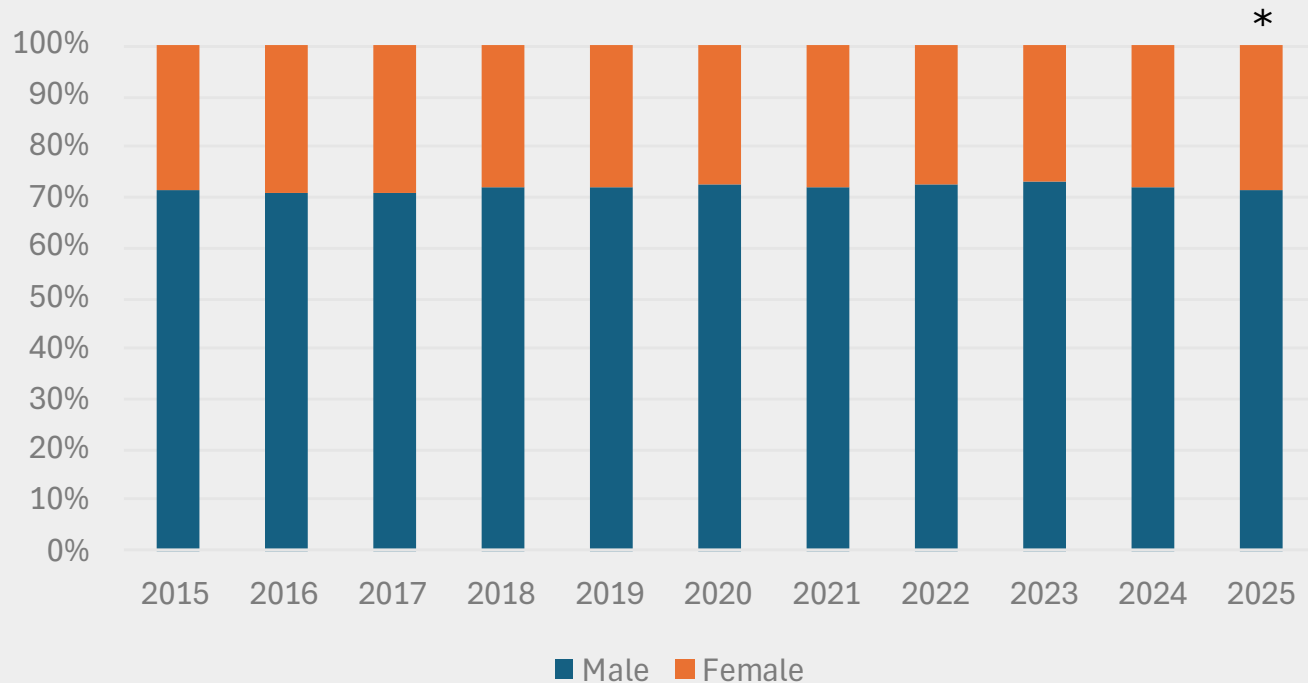
Data as of 03/14/2025

Fatalities as of 3/14/2025 Comparison

Fatalities	2023	2024	2025
Fatalities Totals	612	588	532
Fatalities (Speed Related)	207	214	186
Fatalities (DUI-All)	214	221	83*
Fatalities (Unrestrained Occupant)	190	163	165
Fatalities (Pedestrians)	119	108	91
Fatalities (Motorcyclists)	65	63	48
Fatalities (Work Zone)	30	24	27
Fatalities (Pedalcyclists)	12	7	13

* DUI-All Fatalities have a 30–45-day lag in toxicology reporting and are not indicative of where this number will end up.

Fatalities by Gender and Year



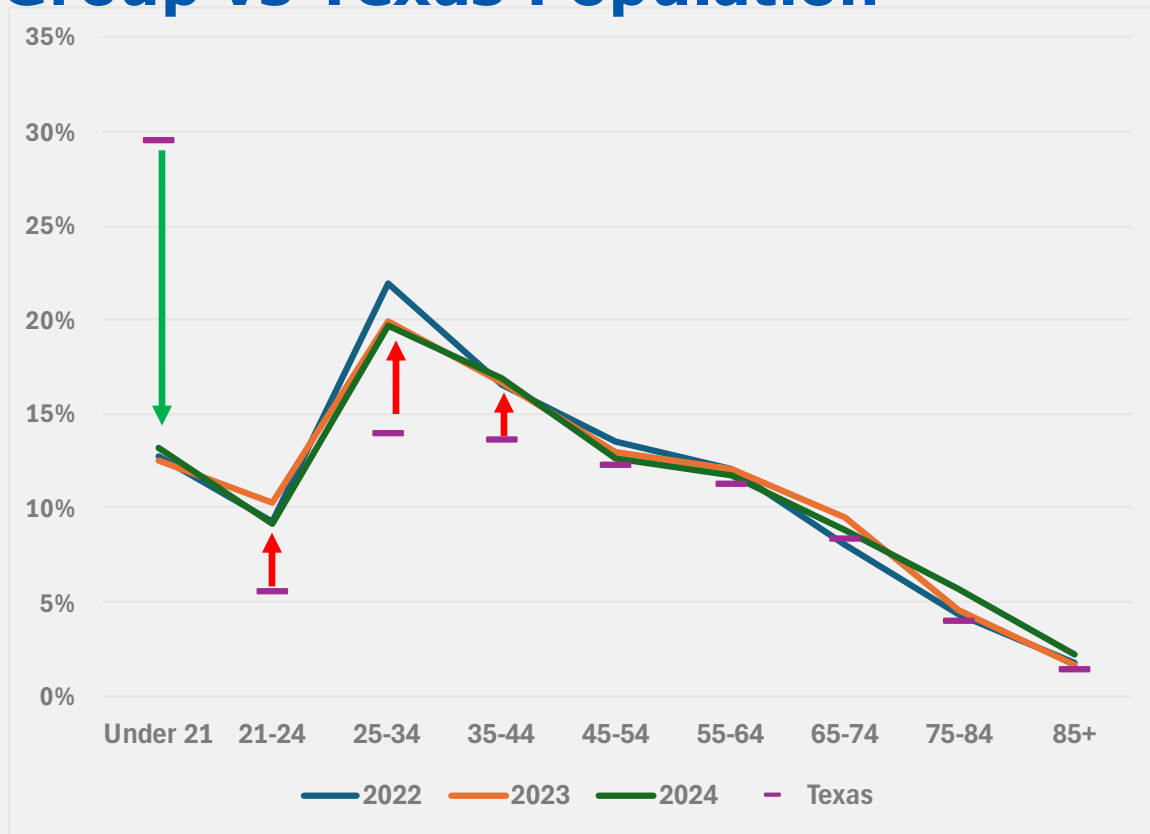
The distribution of fatalities by gender remains in line with the historical distribution of:

- 72% Male
- 28% Female

* Data as of 03/14/2025

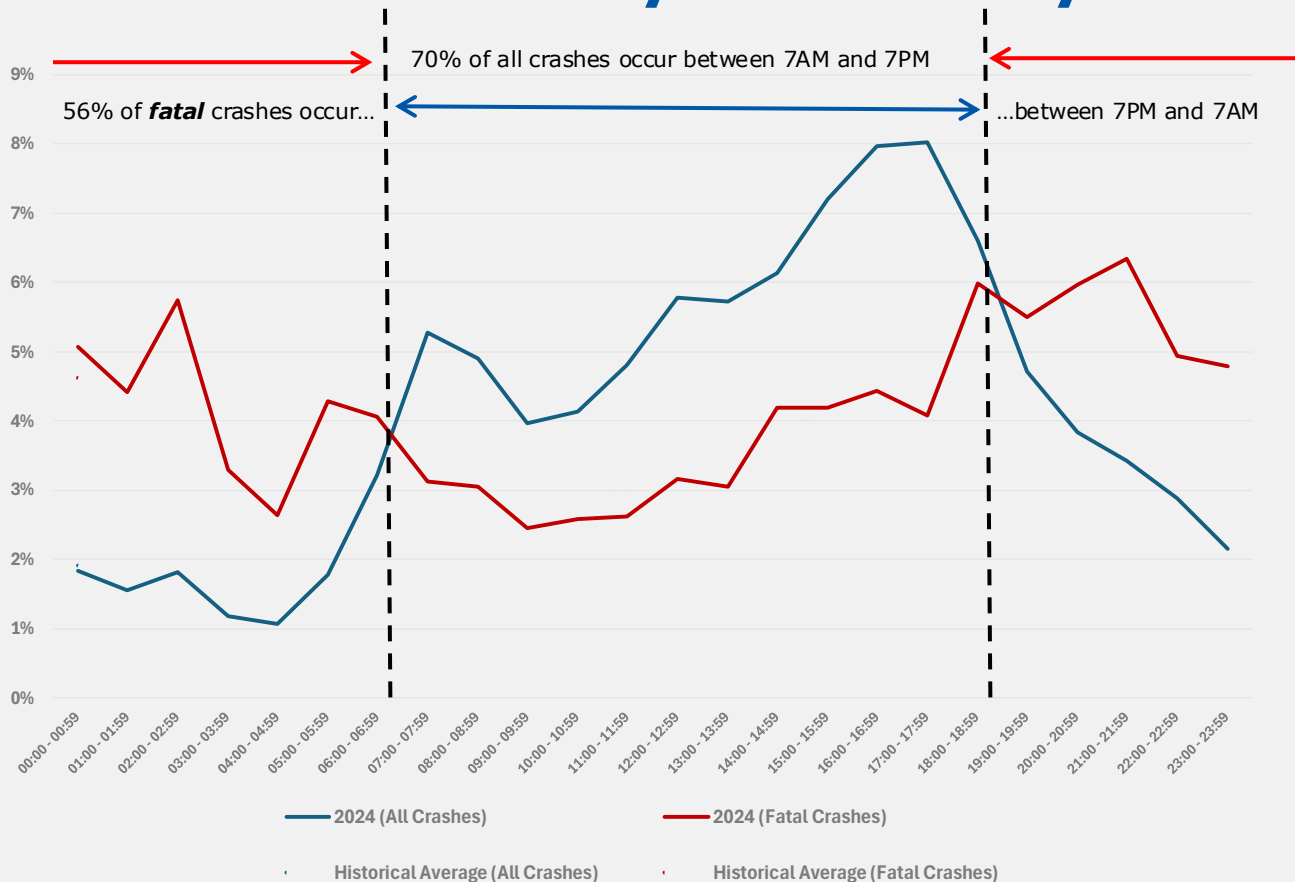
Fatalities by Age Group vs Texas Population

For 2024, all age groups tracked in line with previous years, with fatalities for individuals under 21 years of age well below their percentage of the Texas population, and the 21-44 year-old group remaining over-represented.



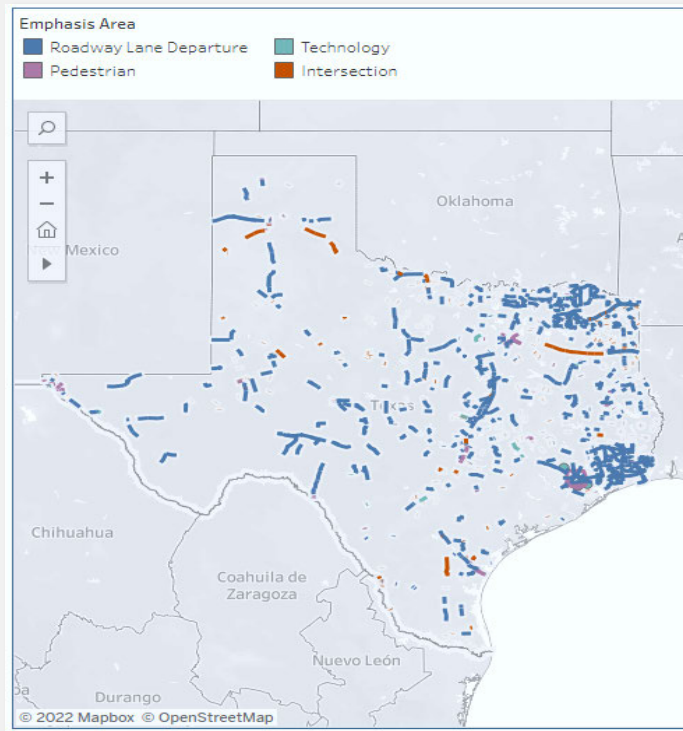
Age categories are aligned with Texas Comptroller census data.

All Crashes and Fatalities by Time of Day



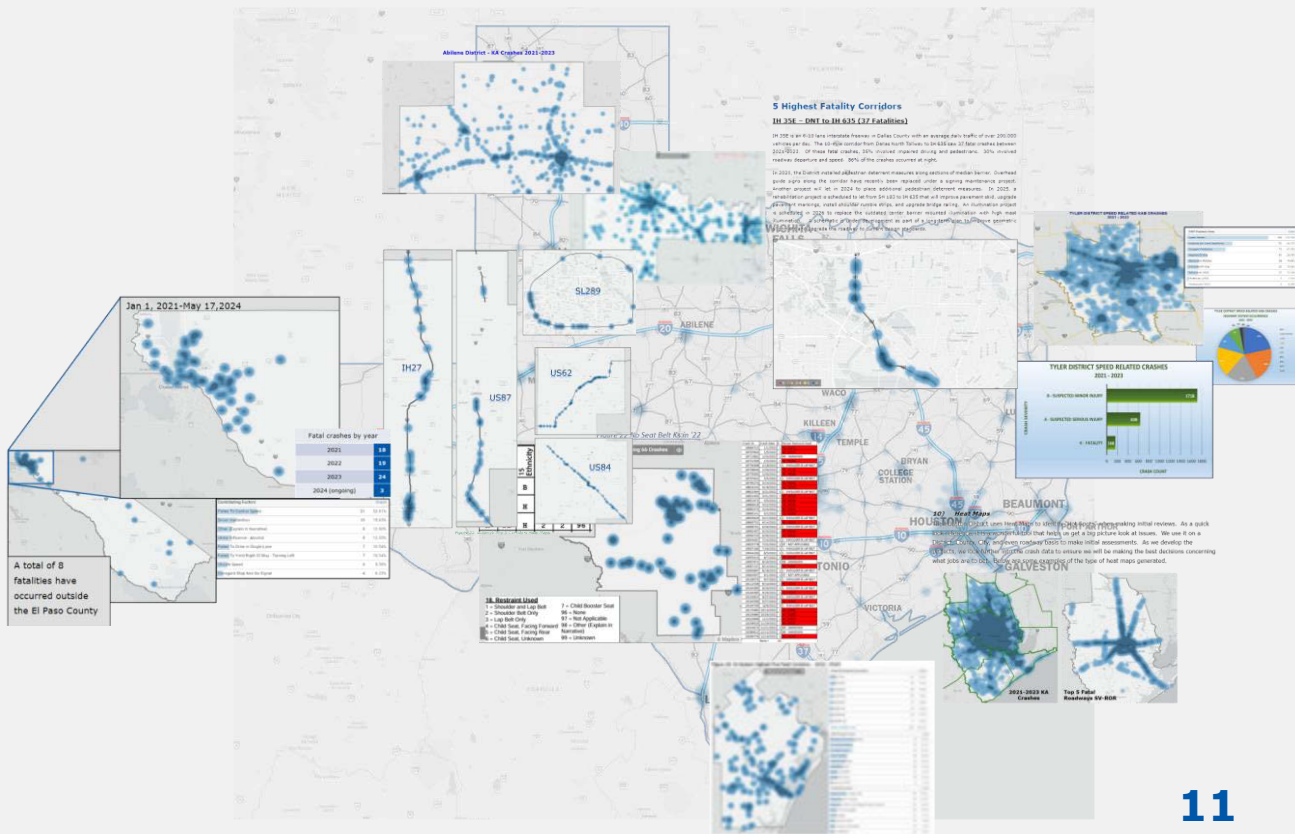
Road to Zero Funds – Tracking Projects

Emphasis Areas	Number of Projects	Construction Completed
Roadway Lane Departure	109 \$360.0M	94 \$248.7M
Intersection	114 \$156.0M	91 \$98.8M
Pedestrian	47 \$72.5M	35 \$54.7M
Technology	9 \$15.0M	7 \$11.4M
TOTAL	271 \$603.5M	219 \$413.6M



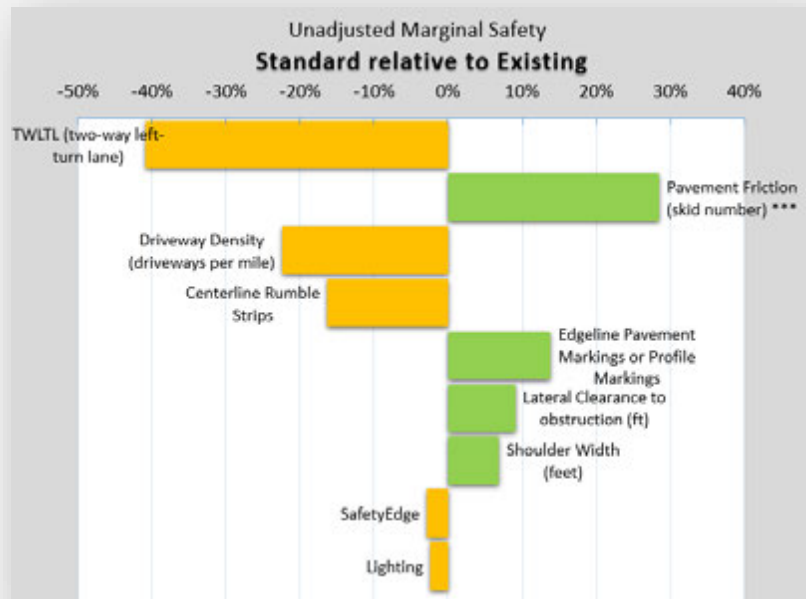
AASHTOWare Safety - Annual District Safety Plans

- Crash Query application being used across the state for both rapid orientation and deep-divide analysis in support of annual district safety plans
 - Standard template allows for like-to-like comparison between districts and Statewide averages
- Network Screening (Segments, Intersections, and Sliding Window) allow for pinpoint analysis of where countermeasures have been, or could be implemented



Safety Scoring Tools

- Incorporates safety design in every project
- Helps designers understand the impact of their decisions on project safety
- Urban Intersection and Segment web-based tool available online
- Rural Intersection and Segment web-based tool **Now Available!**
- Continuously being improved
 - Integration of tools
 - Conversion to web application
- **Every project is a safety project!**



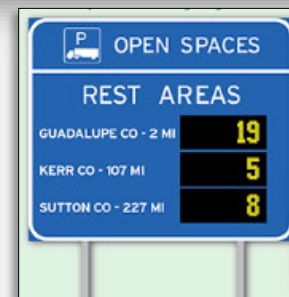
Statewide Truck Parking – Implementation Plan Update

- TxDOT plans to deliver **\$300M** truck parking improvements in the 2025 UTP, including:
 - New truck parking construction
 - Expansion of existing parking
 - Access and operational improvements
- **100** projects completed
 - 1,084 spaces
- **16** current projects under construction
 - 549 spaces
- **1** projects currently in design
 - 100 spaces
- **146** future projects planned
 - 4,074 spaces



Truck Parking Availability System (TPAS)

- The **Truck Parking Availability System** is a partnership between California, Arizona, New Mexico and Texas
- Promotes a safer and more efficient travel by placing real-time signs that provide available parking spaces for rest areas along I-10
- Reduces fatigue-related truck-involved crashes
- TxDOT plans on including TPAS in other Safety Rest Areas along other interstate corridors
- Construction has begun with estimated completion in Fall of 2026.

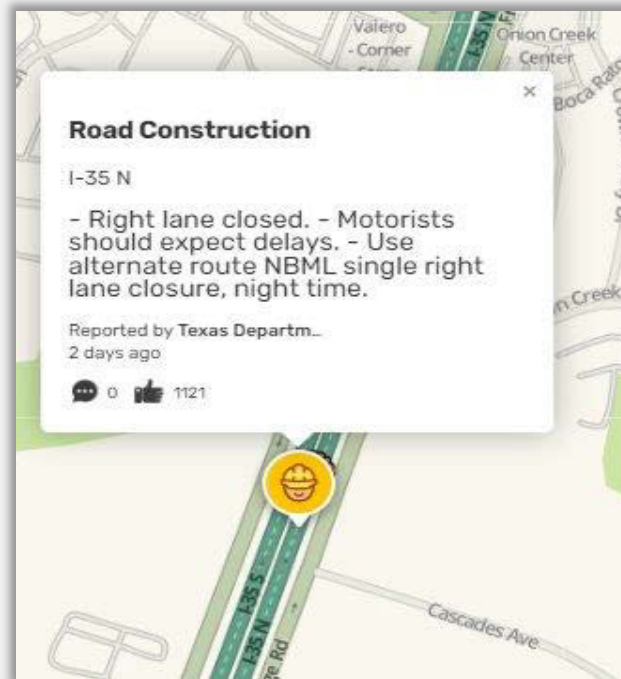


Sending Information from DriveTexas to Mapping companies

- TxDOT moved to single point of entry for work zone information using HCRS to DriveTexas and LoneStar
- HCRS data feed also supplies work zone information to the Work Zone Data Exchange (WZDx)
- Currently, 5 major mapping companies (Google Maps, Apple Map, Waze, TomTom, and HERE Technology) are consuming DriveTexas information include WZDx, icy road, flooding, etc.



Information shows on DriveTexas.gov



Information shows on Waze 1100+ thumbs up within 2-days

Commercial Vehicle Alerts

Deployed on all Interstates in Texas

3,233.4 Miles

July 2024

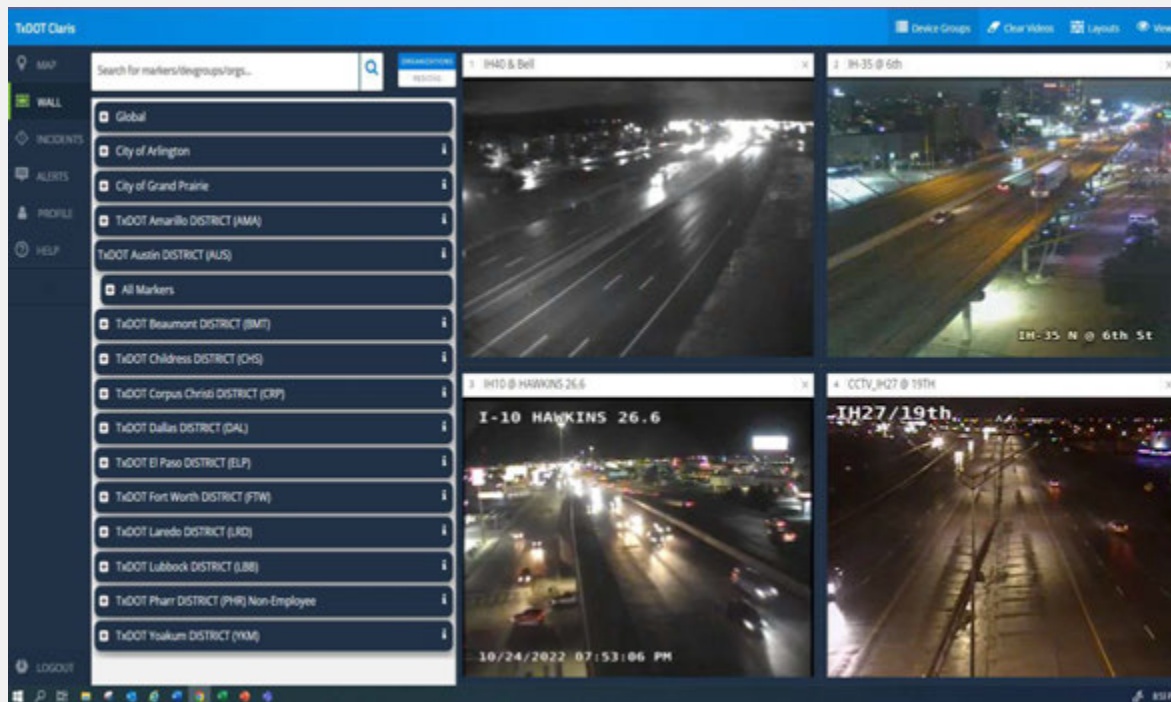
I-45 Metrics (Dec 2024 – Feb 2025)

- 64 - 71% of alerted drivers slow down ahead of an incident (**Increasing**)
- 29% of trucks slow down by 5 mph a half-mile from receiving an alert (Consistent)
- 60% of trucks slow down by 5 mph 2 miles from receiving an alert (Peak in Feb 2025)



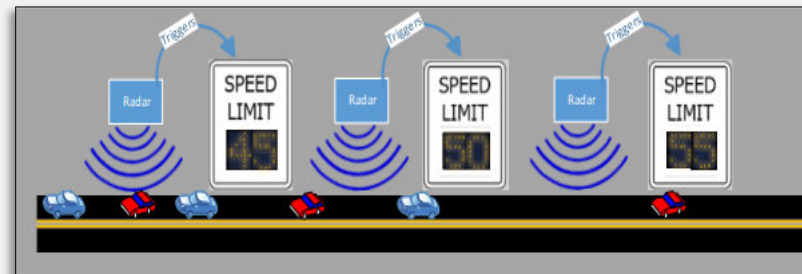
Statewide Video Sharing Platform

- Live Video
- All 25 Districts added
- Shared with media, state agencies, etc
- 3,000+ cameras online
- Vital for transportation safety
 - Natural disasters
 - Crashes
 - Weather



Additional Safety Initiatives Currently Underway

- Safety Task Force
- Variable Speed Limits
- Incident Management Expansion
- Roundabout and Alternative Intersection Design (RAID)



HELP
#EndTheStreakTX
End the streak of daily deaths on Texas roadways.