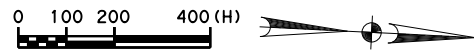


chait1101
Pen Tablet\\Hoxw00\Jobs\59004\TECHPROD\SH 288\Draw\Plots\59004\SH288*11X17.dgn
Design File name: \\Hoxw00\Jobs\59004\TECHPROD\SH 288\Draw\Plots\59004\SH288*11X17.dgn
Scale: 400.000000:1.000000
09:53

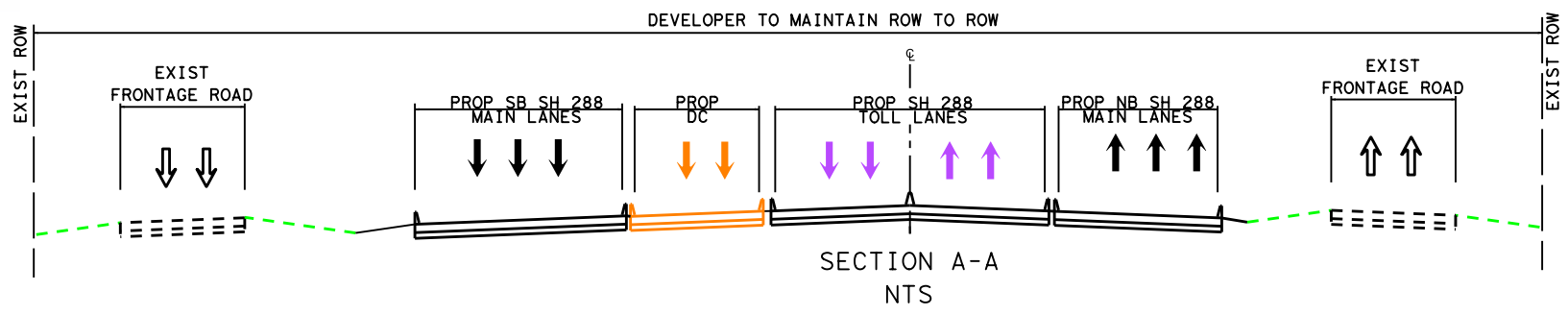
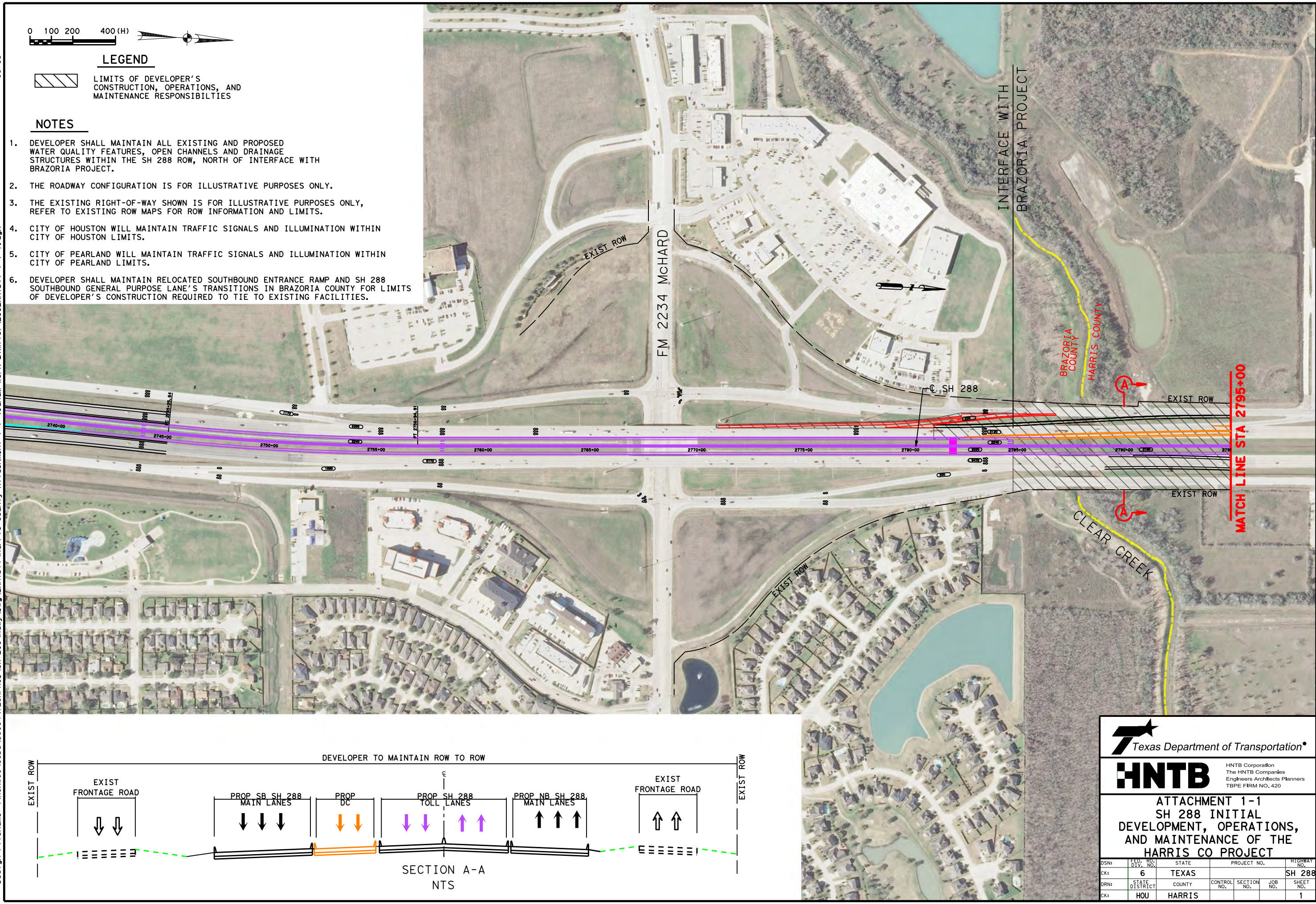



LEGEND

 LIMITS OF DEVELOPER'S CONSTRUCTION, OPERATIONS, AND MAINTENANCE RESPONSIBILITIES


NOTES

1. DEVELOPER SHALL MAINTAIN ALL EXISTING AND PROPOSED WATER QUALITY FEATURES, OPEN CHANNELS AND DRAINAGE STRUCTURES WITHIN THE SH 288 ROW, NORTH OF INTERFACE WITH BRAZORIA PROJECT.
2. THE ROADWAY CONFIGURATION IS FOR ILLUSTRATIVE PURPOSES ONLY.
3. THE EXISTING RIGHT-OF-WAY SHOWN IS FOR ILLUSTRATIVE PURPOSES ONLY, REFER TO EXISTING ROW MAPS FOR ROW INFORMATION AND LIMITS.
4. CITY OF HOUSTON WILL MAINTAIN TRAFFIC SIGNALS AND ILLUMINATION WITHIN CITY OF HOUSTON LIMITS.
5. CITY OF PEARLAND WILL MAINTAIN TRAFFIC SIGNALS AND ILLUMINATION WITHIN CITY OF PEARLAND LIMITS.
6. DEVELOPER SHALL MAINTAIN RELOCATED SOUTHBOUND ENTRANCE RAMP AND SH 288 SOUTHBOUND GENERAL PURPOSE LANE'S TRANSITIONS IN BRAZORIA COUNTY FOR LIMITS OF DEVELOPER'S CONSTRUCTION REQUIRED TO TIE TO EXISTING FACILITIES.





Texas Department of Transportation



HNTB Corporation
The HNTB Companies
Engineers Architects Planners
TBPE FIRM NO. 420

ATTACHMENT 1-1
SH 288 INITIAL
DEVELOPMENT, OPERATIONS,
AND MAINTENANCE OF THE
HARRIS CO PROJECT

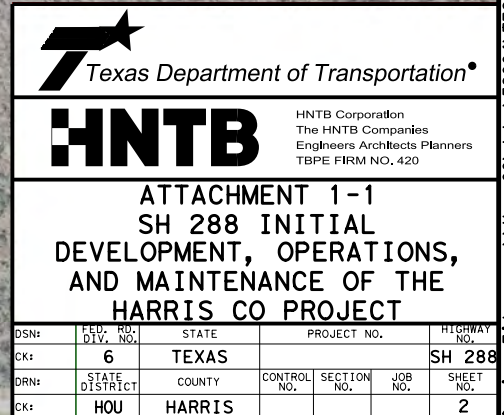
DSN:	FED. RD. DIV. NO.	STATE	PROJECT NO.		HIGHWAY NO.
CK:	6	TEXAS			SH 288
DRN:	STATE DISTRICT	COUNTY	CONTROL NO.	SECTION NO.	JOB NO.
CK:	HOU	HARRIS			
					SHEET NO. 1



LIMITS OF DEVELOPER'S CONSTRUCTION, OPERATIONS, AND MAINTENANCE RESPONSIBILITIES

NOTES

1. DEVELOPER SHALL MAINTAIN ALL EXISTING AND PROPOSED WATER QUALITY FEATURES, OPEN CHANNELS AND DRAINAGE STRUCTURES WITHIN THE SH 288 ROW.
2. THE ROADWAY CONFIGURATION IS FOR ILLUSTRATIVE PURPOSES ONLY.
3. THE EXISTING RIGHT-OF-WAY SHOWN IS FOR ILLUSTRATIVE PURPOSES ONLY, REFER TO EXISTING RIGHT-OF-WAY MAPS FOR RIGHT-OF-WAY INFORMATION AND LIMITS.
4. SAM HOUSTON TOLL WAY MAIN LANE BRIDGES OVER SH 288 MAINTENANCE WILL BE THE RESPONSIBILITY OF HCTRA.
5. CITY OF HOUSTON WILL MAINTAIN TRAFFIC SIGNALS AND ILLUMINATION WITHIN CITY OF HOUSTON LIMITS.
6. CITY OF PEARLAND WILL MAINTAIN TRAFFIC SIGNALS AND ILLUMINATION WITHIN CITY OF PEARLAND LIMITS.





NOTES

- MATCH LINE STA 2850+00**

EXIST ROW

-Q SH 288

EXIST ROW

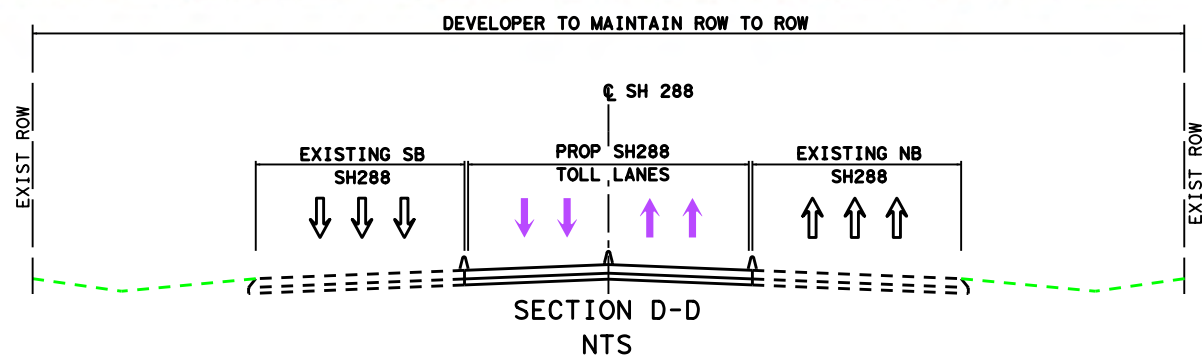
MATCH LINE STA 2905+00

DSN:	FED. RD. DIV. NO.	STATE	PROJECT NO.			HIGHWAY NO.
CK:	6	TEXAS				SH 288
DRN:	STATE DISTRICT	COUNTY	CONTROL NO.	SECTION NO.	JOB NO.	SHEET NO.
CK:	HOU	HARRIS				3



LIMITS OF DEVELOPER'S CONSTRUCTION, OPERATIONS, AND MAINTENANCE RESPONSIBILITIES

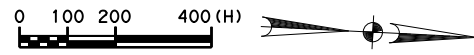
1. DEVELOPER SHALL MAINTAIN ALL EXISTING AND PROPOSED WATER QUALITY FEATURES, OPEN CHANNELS AND DRAINAGE STRUCTURES DEVELOPER WITHIN THE SH 288 ROW.
2. THE ROADWAY CONFIGURATION IS FOR ILLUSTRATIVE PURPOSES ONLY.
3. THE EXISTING RIGHT-OF-WAY SHOWN IS FOR ILLUSTRATIVE PURPOSES ONLY, REFER TO EXISTING ROW MAPS FOR ROW INFORMATION AND LIMITS.
4. CITY OF HOUSTON WILL MAINTAIN TRAFFIC SIGNALS AND ILLUMINATION WITHIN CITY OF HOUSTON LIMITS.



HNTB Corporation
The HNTB Companies
Engineers Architects Planners
TBPE FIRM NO. 420

ATTACHMENT 1-1
SH 288 INITIAL
DEVELOPMENT, OPERATIONS,
AND MAINTENANCE OF THE
HARRIS CO PROJECT

DSN:	FED. RD. DIV. NO.	STATE	PROJECT NO.			HIGHWAY NO.
CK:	6	TEXAS				SH 288
DRN:	STATE DISTRICT	COUNTY	CONTROL NO.	SECTION NO.	JOB NO.	SHEET NO.
CK:	HOU	HARRIS				4



LEGEND



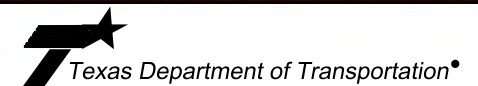
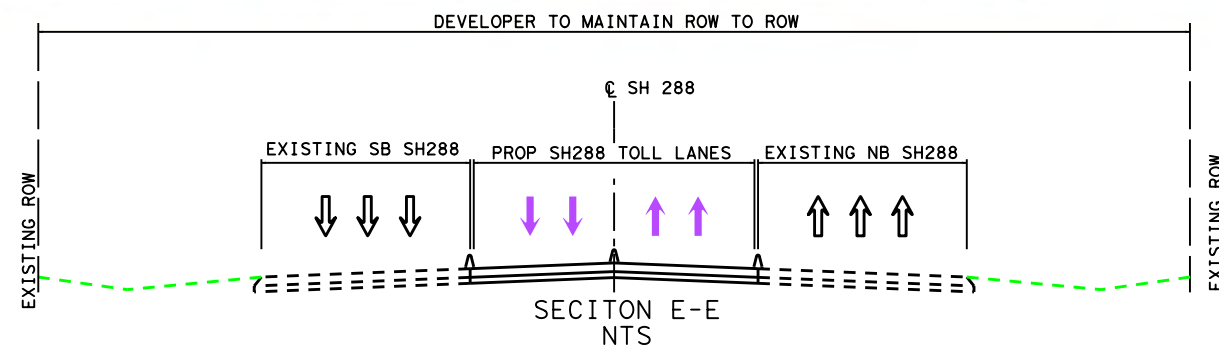
LIMITS OF DEVELOPER'S
CONSTRUCTION, OPERATIONS, AND
MAINTENANCE RESPONSIBILITIES

NOTES

1. DEVELOPER SHALL MAINTAIN ALL EXISTING AND PROPOSED WATER QUALITY FEATURES, OPEN CHANNELS AND DRAINAGE STRUCTURES WITHIN THE SH 288 ROW.
2. THE ROADWAY CONFIGURATION IS FOR ILLUSTRATIVE PURPOSES ONLY.
3. THE EXISTING RIGHT-OF-WAY SHOWN IS FOR ILLUSTRATIVE PURPOSES ONLY, REFER TO EXISTING ROW MAPS FOR ROW INFORMATION AND LIMITS.
4. CITY OF HOUSTON WILL MAINTAIN TRAFFIC SIGNALS AND ILLUMINATION WITHIN CITY OF HOUSTON LIMITS.

MATCH LINE STA 2960+00

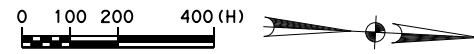
MATCH LINE STA 3015+00



HNTB
HNTB Corporation
The HNTB Companies
Engineers Architects Planners
TBPE FIRM NO. 420

ATTACHMENT 1-1
SH 288 INITIAL
DEVELOPMENT, OPERATIONS,
AND MAINTENANCE OF THE
HARRIS CO PROJECT

DSN:	FED. RD. DIV. NO.	STATE	PROJECT NO.		HIGHWAY NO.
CK:	6	TEXAS			SH 288
DRN:	STATE DISTRICT	COUNTY	CONTROL NO.	SECTION NO.	JOB NO. SHEET NO.
CK:	HOU	HARRIS			5



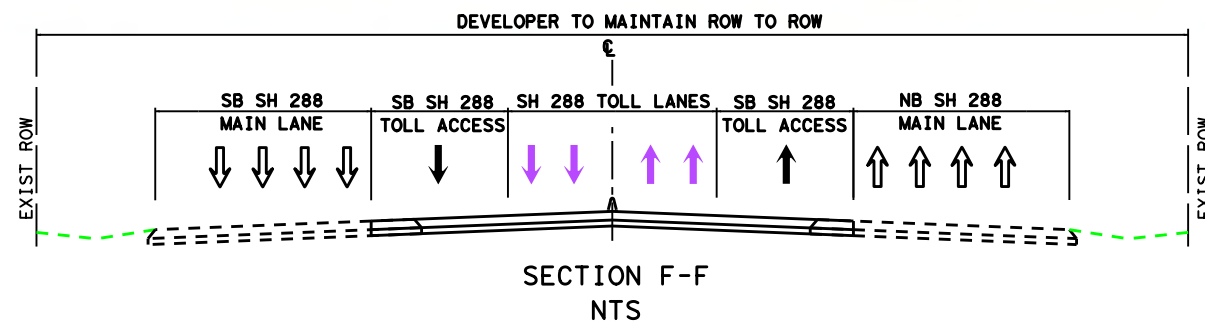
LEGEND

LIMITS OF DEVELOPER'S CONSTRUCTION, OPERATIONS, AND MAINTENANCE RESPONSIBILITIES

NOTES

1. DEVELOPER SHALL MAINTAIN ALL EXISTING AND PROPOSED WATER QUALITY FEATURES, OPEN CHANNELS AND DRAINAGE STRUCTURES WITHIN THE SH 288 ROW.
2. THE ROADWAY CONFIGURATION IS FOR ILLUSTRATIVE PURPOSES ONLY.
3. THE EXISTING RIGHT-OF-WAY SHOWN IS FOR ILLUSTRATIVE PURPOSES ONLY, REFER TO EXISTING ROW MAPS FOR ROW INFORMATION AND LIMITS.
4. CITY OF HOUSTON WILL MAINTAIN TRAFFIC SIGNALS AND ILLUMINATION WITHIN CITY OF HOUSTON LIMITS.

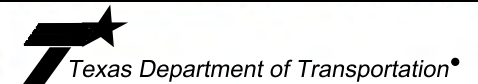
MATCH LINE STA 3015+00



REED

3070

MATCH LINE STA 3070+00



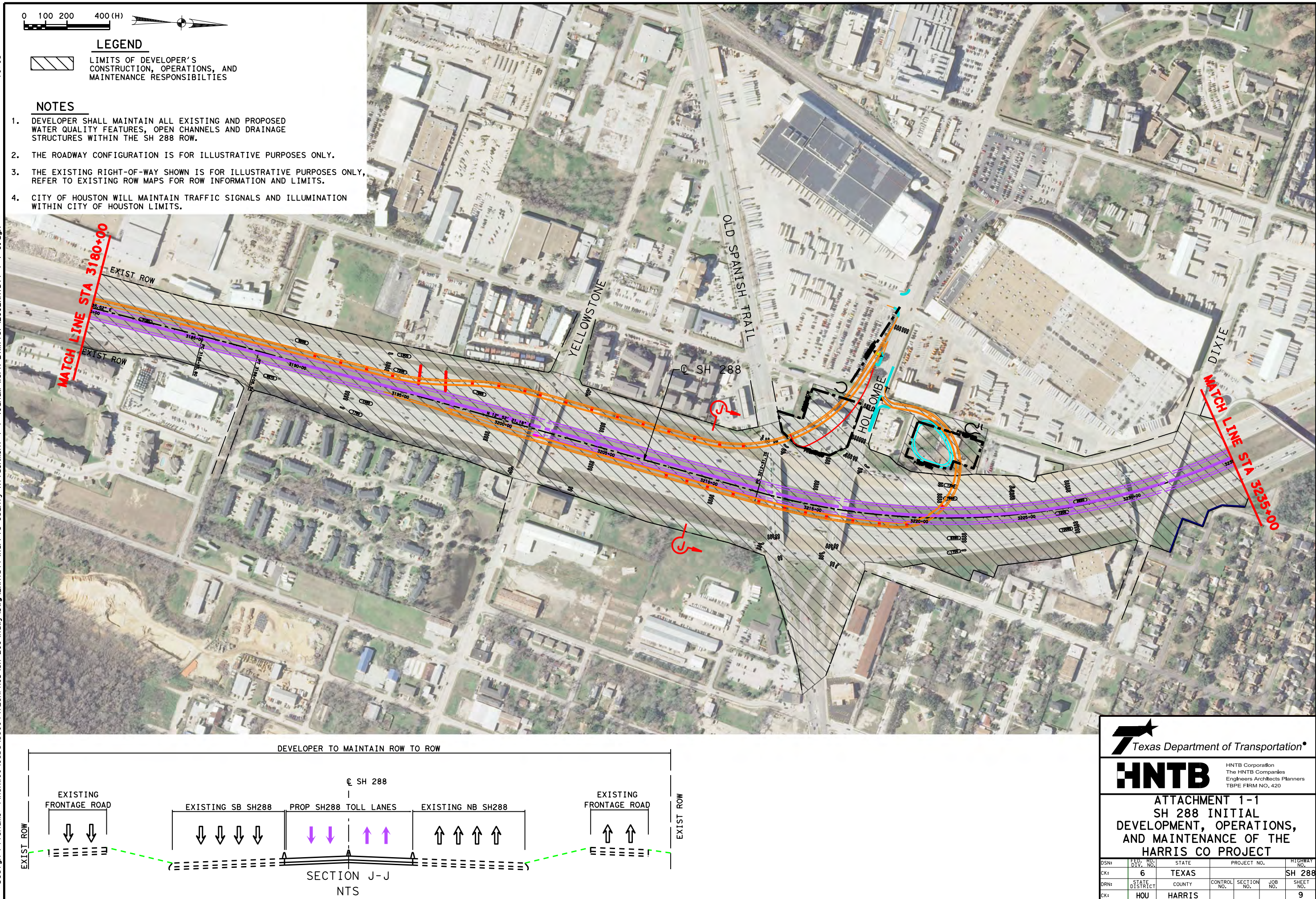
HNTB HNTB Corporation
The HNTB Companies
Engineers Architects Planners
TBPE FIRM NO. 420


ATTACHMENT 1-1
SH 288 INITIAL
DEVELOPMENT, OPERATIONS,
AND MAINTENANCE OF THE
HARRIS CO PROJECT

DSN:	FED. RD. DIV. NO.	STATE	PROJECT NO.			HIGHWAY NO.
CK:	6	TEXAS				SH 288
DRN:	STATE DISTRICT	COUNTY	CONTROL NO.	SECTION NO.	JOB NO.	SHEET NO.
CK:	HOU	HARRIS				6









Texas Department of Transportation

HNTB

HNTB Corporation
The HNTB Companies
Engineers Architects Planners
TBPE FIRM NO. 420

ATTACHMENT 1-1

SH 288 INITIAL

DEVELOPMENT, OPERATIONS,

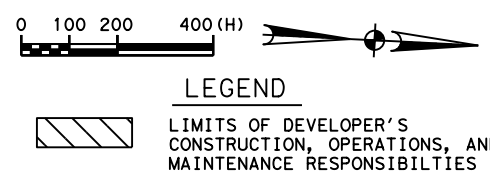
AND MAINTENANCE OF THE

HARRIS CO PROJECT

DSN#	FED. DIV. NO.	STATE	PROJECT NO.	HIGHWAY NO.
CK#	6	TEXAS		SH 288
DRN#	STATE DISTRICT	COUNTY	CONTROL NO.	SHEET NO.
CK#	HOU	HARRIS		9

Pen Tab\et\Hoxw00\Jobs\59004\TECHPROD\SH 288\Raw\Plots\59004\SH288*111X17. pen
Design File\et\Hoxw00\Jobs\59004\TECHPROD\SH 288\Raw\Plots\59004\SH288*111X17. pen

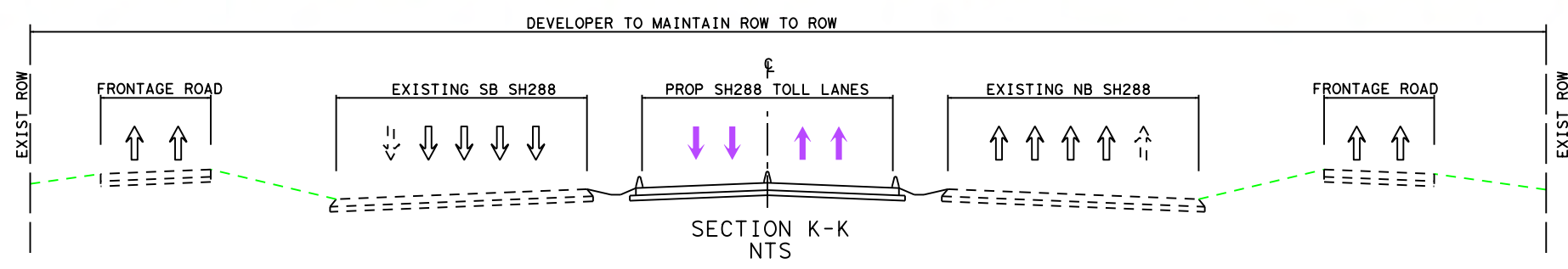
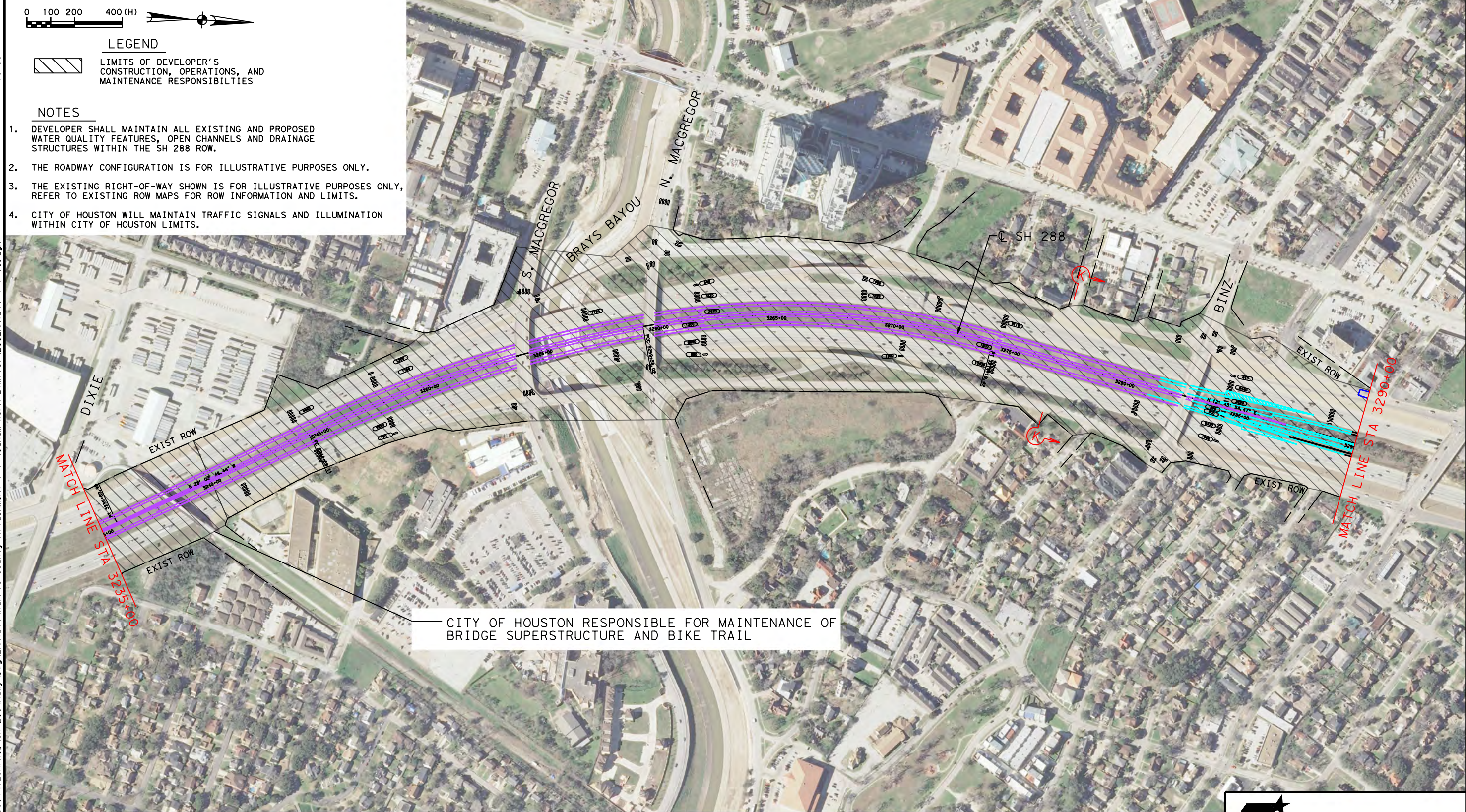
Scale: 400.000000:1.000000
ont:12/18/2014 10:06
1-1 (andM Work Limits)\288\Exhibit\Harris County Attachment 1-1 (andM Work Limits)\288\Exhibit 1-1*10. dgn



LEGEND
LIMITS OF DEVELOPER'S CONSTRUCTION, OPERATIONS, AND MAINTENANCE RESPONSIBILITIES

NOTES

1. DEVELOPER SHALL MAINTAIN ALL EXISTING AND PROPOSED WATER QUALITY FEATURES, OPEN CHANNELS AND DRAINAGE STRUCTURES WITHIN THE SH 288 ROW.
2. THE ROADWAY CONFIGURATION IS FOR ILLUSTRATIVE PURPOSES ONLY.
3. THE EXISTING RIGHT-OF-WAY SHOWN IS FOR ILLUSTRATIVE PURPOSES ONLY, REFER TO EXISTING ROW MAPS FOR ROW INFORMATION AND LIMITS.
4. CITY OF HOUSTON WILL MAINTAIN TRAFFIC SIGNALS AND ILLUMINATION WITHIN CITY OF HOUSTON LIMITS.



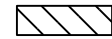
Texas Department of Transportation

HNTB Corporation
The HNTB Companies
Engineers Architects Planners
TBPE FIRM NO. 420

ATTACHMENT 1-1
SH 288 INITIAL
DEVELOPMENT, OPERATIONS,
AND MAINTENANCE OF THE
HARRIS CO PROJECT

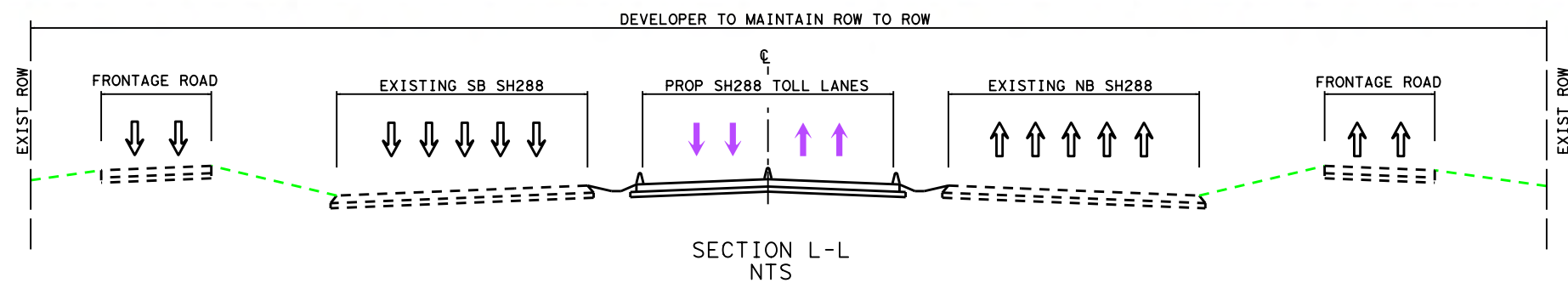
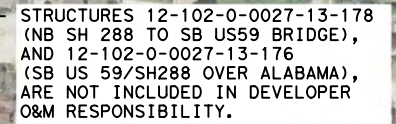
DSN:	FED. RD. DIV. NO.	STATE	PROJECT NO.		HIGHWAY NO.
CK:	6	TEXAS			SH 288
DRN:	STATE DISTRICT	COUNTY	CONTROL NO.	SECTION NO.	JOB NO.
CK:	HOU	HARRIS			10

Design File\et\Hoxw00\Jobs\59004\TECHPROD\SH 288\Raw\Plots\59004\SH288*111X17. pen



LIMITS OF DEVELOPER'S CONSTRUCTION, OPERATIONS, AND MAINTENANCE RESPONSIBILITIES

1. DEVELOPER SHALL MAINTAIN ALL EXISTING AND PROPOSED WATER QUALITY FEATURES, OPEN CHANNELS AND DRAINAGE STRUCTURES WITHIN THE SH 288 ROW.
2. THE ROADWAY CONFIGURATION IS FOR ILLUSTRATIVE PURPOSES ONLY.
3. THE EXISTING RIGHT-OF-WAY SHOWN IS FOR ILLUSTRATIVE PURPOSES ONLY, REFER TO EXISTING ROW MAPS FOR ROW INFORMATION AND LIMITS.
4. CITY OF HOUSTON WILL MAINTAIN TRAFFIC SIGNALS AND ILLUMINATION WITHIN CITY OF HOUSTON LIMITS.



HNTB Corporation
The HNTB Companies
Engineers Architects Planners
TBPE FIRM NO. 420

ATTACHMENT 1-1
SH 288 INITIAL
DEVELOPMENT, OPERATIONS,
AND MAINTENANCE OF THE
HARRIS CO PROJECT

DSN:	FED. RD. DIV. NO.	STATE	PROJECT NO.			HIGHWAY NO.
CK:	6	TEXAS				SH 288
DRN:	STATE DISTRICT	COUNTY	CONTROL NO.	SECTION NO.	JOB NO.	SHEET NO.
CK:	HOU	HARRIS				11



LIMITS OF DEVELOPER'S CONSTRUCTION, OPERATIONS, AND MAINTENANCE RESPONSIBILITIES

1. DEVELOPER SHALL MAINTAIN ALL DIRECT CONNECTOR BRIDGE STRUCTURES AND ASSOCIATED DRAINAGE STRUCTURES CONSTRUCTED BY THE DEVELOPER TO ACCOMMODATE CONNECTION TO THE SAM HOUSTON TOLLWAY.
2. THE ROADWAY CONFIGURATION IS FOR ILLUSTRATIVE PURPOSES ONLY.
3. THE EXISTING RIGHT-OF-WAY SHOWN IS FOR ILLUSTRATIVE PURPOSES ONLY, REFER TO EXISTING ROW MAPS FOR ROW INFORMATION AND LIMITS.
4. CITY OF HOUSTON WILL MAINTAIN TRAFFIC SIGNALS AND ILLUMINATION WITHIN CITY OF HOUSTON LIMITS.



DEVELOPER RESPONSIBLE FOR O&M
ON DC'S TO AND FROM SH288 AND BW8,
AND FOR AUXILIARY LANES CONSTRUCTED
ON BW8 FOR 288 DC'S



DSN:	FED. RD. DLY. NO.	STATE	PROJECT NO.			HIGHWAY NO.
CK:	6	TEXAS				SH 288
DRN:	STATE DISTRICT	COUNTY	CONTROL NO.	SECTION NO.	JOB NO.	SHEET NO.
CK:	HOU	HARRIS				12

LEGEND



NOTES

1. DEVELOPER SHALL MAINTAIN ALL DIRECT CONNECTOR BRIDGE STRUCTURES AND ASSOCIATED DRAINAGE STRUCTURES CONSTRUCTED BY THE DEVELOPER TO ACCOMMODATE CONNECTION TO THE SAM HOUSTON TOLLWAY.
2. THE ROADWAY CONFIGURATION IS FOR ILLUSTRATIVE PURPOSES ONLY.
3. THE EXISTING RIGHT-OF-WAY SHOWN IS FOR ILLUSTRATIVE PURPOSES ONLY, REFER TO EXISTING ROW MAPS FOR ROW INFORMATION AND LIMITS.
4. SAM HOUSTON TOLLWAY MAINLANE BRIDGES OVER SH 288 MAINTENANCE WILL BE THE RESPONSIBILITY OF HCTRA.
5. CITY OF HOUSTON WILL MAINTAIN TRAFFIC SIGNALS AND ILLUMINATION WITHIN CITY OF HOUSTON LIMITS.

MATCH LINE A

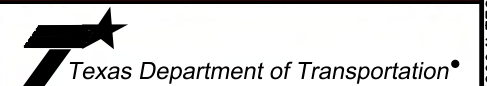
SAM HOUSTON TOLLWAY

DEVELOPER RESPONSIBLE FOR O&M
ON DC'S TO AND FROM SH288 AND BW8,
AND FOR AUXILIARY LANES CONSTRUCTED
ON BW8 FOR 288 DC'S

SAM HOUSTON TOLLWAY
BRIDGES O&M BY HCTRA

DEVELOPER RESPONSIBLE FOR O&M
ON DC'S TO AND FROM SH288 AND BW8,
AND FOR AUXILIARY LANES CONSTRUCTED
ON BW8 FOR 288 DC'S

MATCH LINE B



HNTB HNTB Corporation
The HNTB Companies
Engineers Architects Planners
TBPE FIRM NO. 420

ATTACHMENT 1-1
SH 288 INITIAL
DEVELOPMENT, OPERATIONS,
AND MAINTENANCE OF THE
HARRIS CO PROJECT

DSN:	FED. NO. DIV. NO.	STATE	PROJECT NO.			HIGHWAY NO.
CK:	6	TEXAS				SH 288
DRN:	STATE DISTRICT	COUNTY	CONTROL NO.	SECTION NO.	JOB NO.	SHEET NO.
CK:	HOU	HARRIS				13

