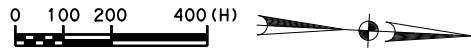


Scale: 400, 000000: 1, 000000  
Pen Tables: \\Hou00\Jobs\59004\TECHPROD\SH 288\Draw\Plots\59004\*SH288\*11X17, pen  
Design File Names: \\Hou00\Jobs\59004\TECHPROD\SH 288\Draw\Draw\Exhibit\Harris County Attachment 1-1 (Grand Work Limits)\288Exhibit 1-1.dgn  
\$TIME\$

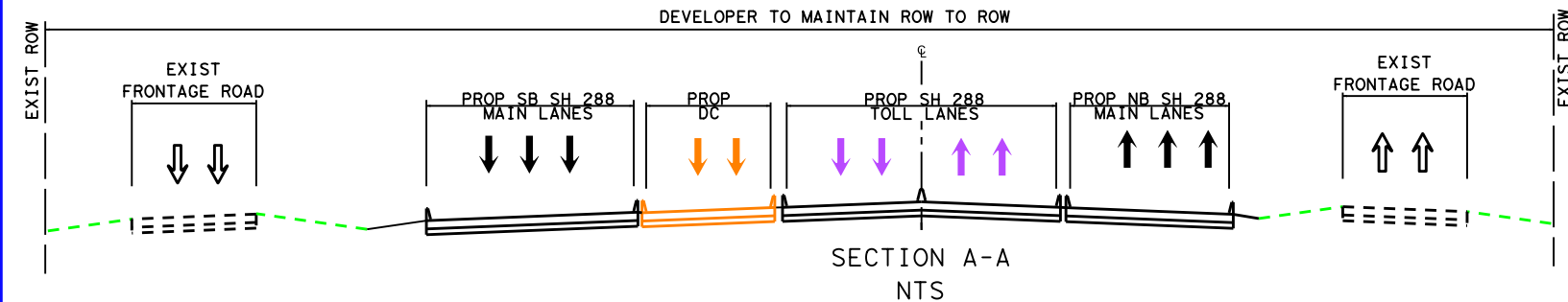
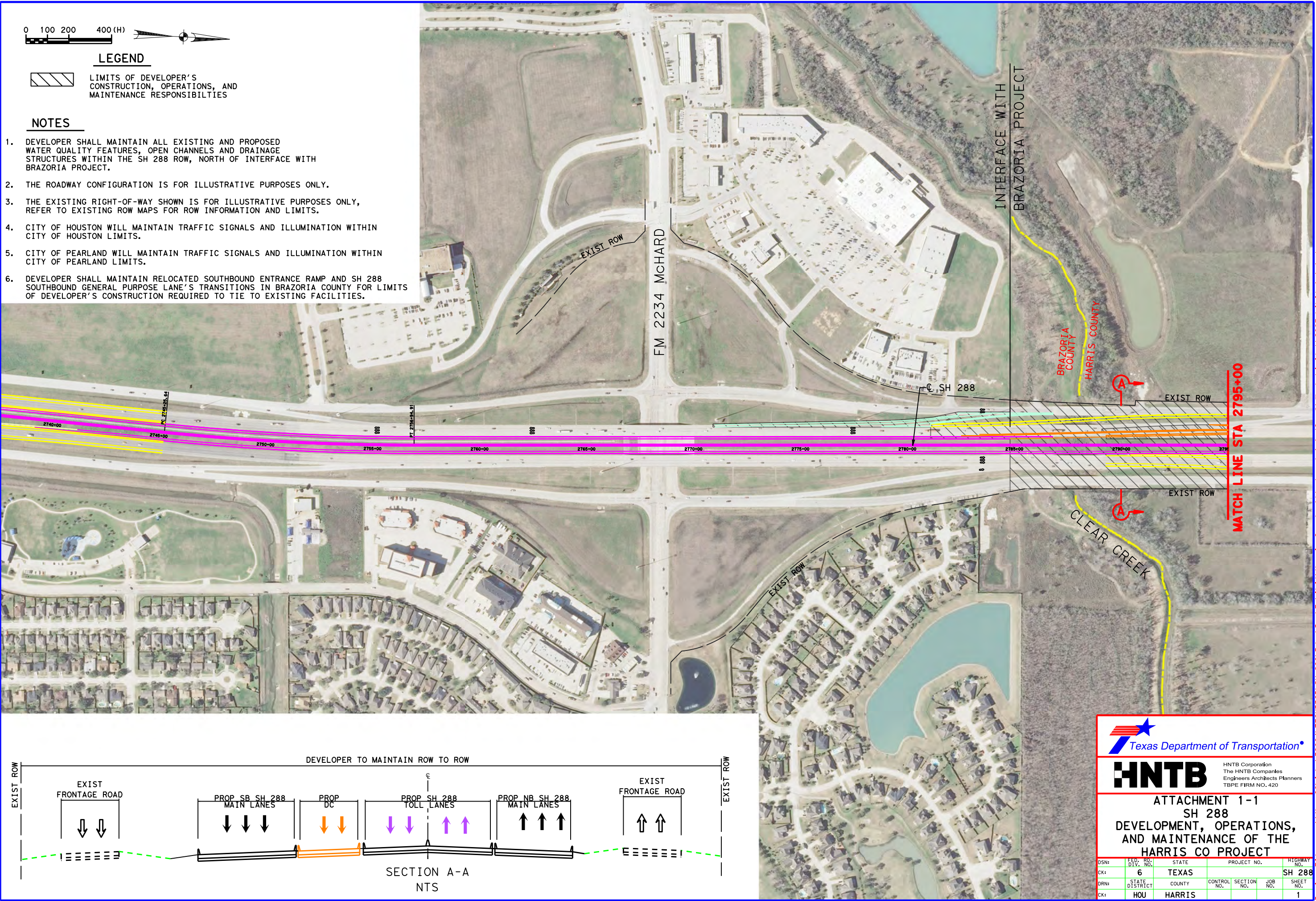



LEGEND

 LIMITS OF DEVELOPER'S CONSTRUCTION, OPERATIONS, AND MAINTENANCE RESPONSIBILITIES

NOTES

1. DEVELOPER SHALL MAINTAIN ALL EXISTING AND PROPOSED WATER QUALITY FEATURES, OPEN CHANNELS AND DRAINAGE STRUCTURES WITHIN THE SH 288 ROW, NORTH OF INTERFACE WITH BRAZORIA PROJECT.
2. THE ROADWAY CONFIGURATION IS FOR ILLUSTRATIVE PURPOSES ONLY.
3. THE EXISTING RIGHT-OF-WAY SHOWN IS FOR ILLUSTRATIVE PURPOSES ONLY, REFER TO EXISTING ROW MAPS FOR ROW INFORMATION AND LIMITS.
4. CITY OF HOUSTON WILL MAINTAIN TRAFFIC SIGNALS AND ILLUMINATION WITHIN CITY OF HOUSTON LIMITS.
5. CITY OF PEARLAND WILL MAINTAIN TRAFFIC SIGNALS AND ILLUMINATION WITHIN CITY OF PEARLAND LIMITS.
6. DEVELOPER SHALL MAINTAIN RELOCATED SOUTHBOUND ENTRANCE RAMP AND SH 288 SOUTHBOUND GENERAL PURPOSE LANE'S TRANSITIONS IN BRAZORIA COUNTY FOR LIMITS OF DEVELOPER'S CONSTRUCTION REQUIRED TO TIE TO EXISTING FACILITIES.





**HNTB**

HNTB Corporation  
The HNTB Companies  
Engineers Architects Planners  
TBPE FIRM NO. 420

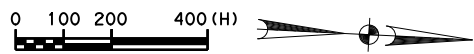
ATTACHMENT 1-1  
SH 288  
DEVELOPMENT, OPERATIONS,  
AND MAINTENANCE OF THE  
HARRIS CO PROJECT

DSN:	FED. RD. DIV. NO.	STATE	PROJECT NO.	HIGHWAY NO.
CK:	6	TEXAS		SH 288
DRN:	STATE DISTRICT	COUNTY	CONTROL NO.	SECTION NO.
CK:	HOU	HARRIS		1

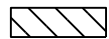


drai11on  
Pen Tables: \\houw00\jobs\59004\TECHPROD\SH 288\Raw\Plots\59004\*SH288\*11\17.pcn  
Design File names: \\houw00\jobs\59004\TECHPROD\SH 288\Raw\Draw\Exhibit\Harris County Attachment 1-1 (OandM Work Limits)\288Exhibit 1-1\*2.dgn

Scale: 400, 000000: 1, 000000  
\$TIME\$  
\$DATE\$



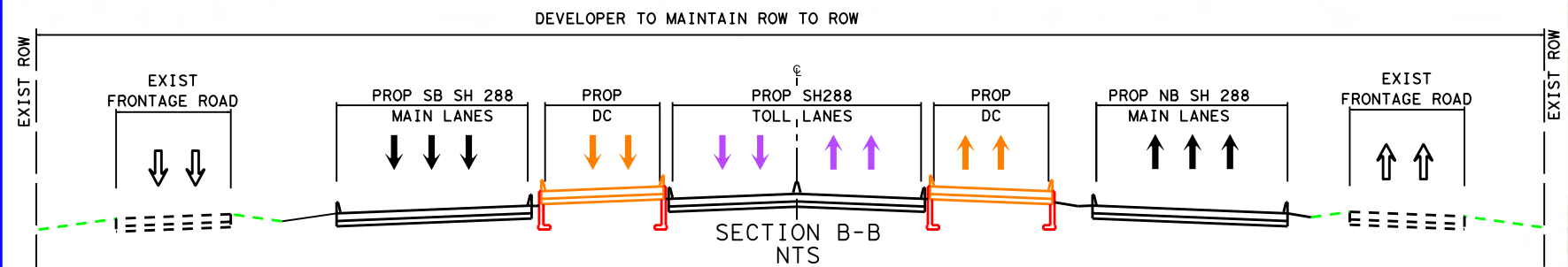
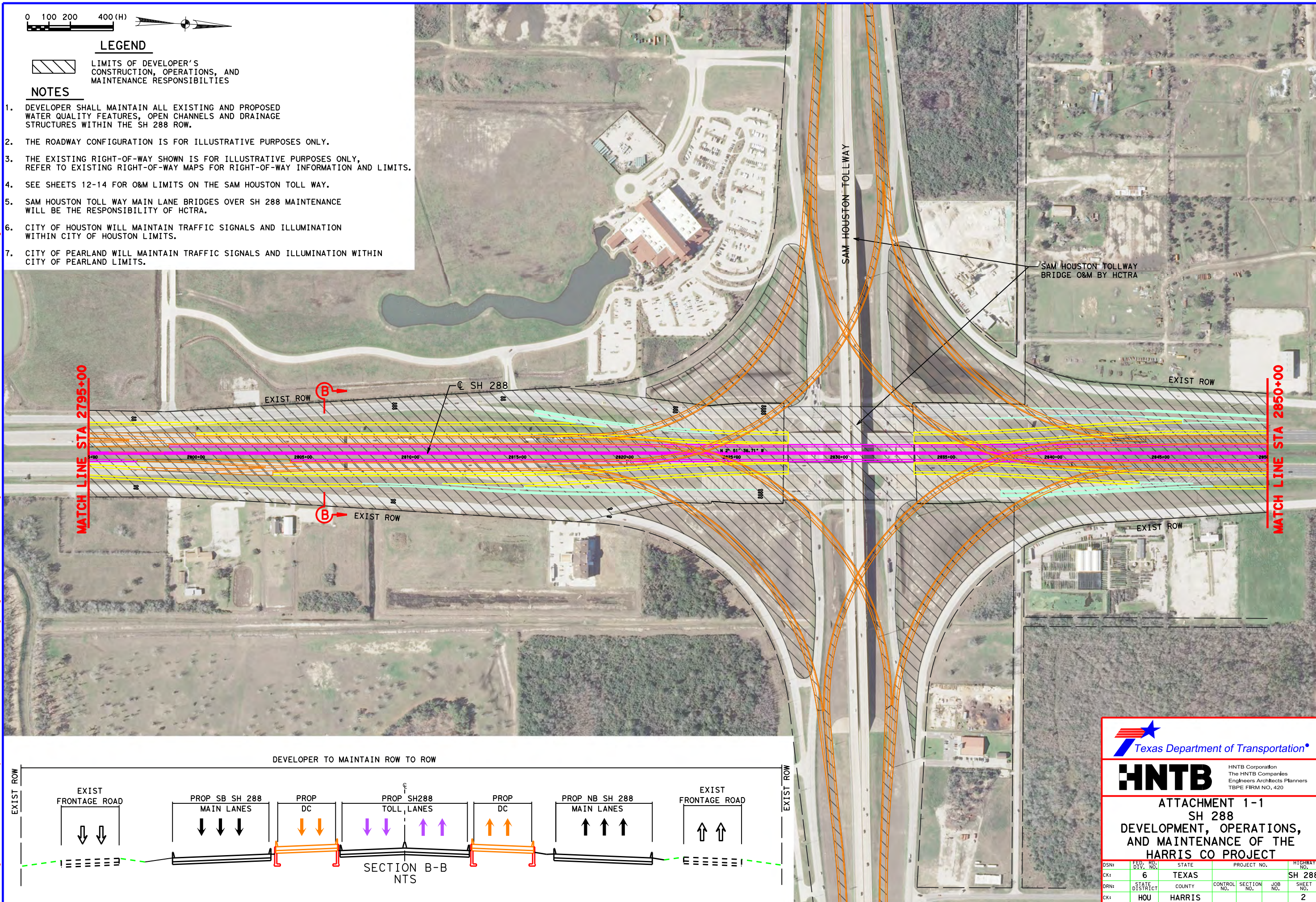
### LEGEND



LIMITS OF DEVELOPER'S  
CONSTRUCTION, OPERATIONS, AND  
MAINTENANCE RESPONSIBILITIES

### NOTES

1. DEVELOPER SHALL MAINTAIN ALL EXISTING AND PROPOSED WATER QUALITY FEATURES, OPEN CHANNELS AND DRAINAGE STRUCTURES WITHIN THE SH 288 ROW.
2. THE ROADWAY CONFIGURATION IS FOR ILLUSTRATIVE PURPOSES ONLY.
3. THE EXISTING RIGHT-OF-WAY SHOWN IS FOR ILLUSTRATIVE PURPOSES ONLY, REFER TO EXISTING RIGHT-OF-WAY MAPS FOR RIGHT-OF-WAY INFORMATION AND LIMITS.
4. SEE SHEETS 12-14 FOR O&M LIMITS ON THE SAM HOUSTON TOLL WAY.
5. SAM HOUSTON TOLL WAY MAIN LANE BRIDGES OVER SH 288 MAINTENANCE WILL BE THE RESPONSIBILITY OF HCTRA.
6. CITY OF HOUSTON WILL MAINTAIN TRAFFIC SIGNALS AND ILLUMINATION WITHIN CITY OF HOUSTON LIMITS.
7. CITY OF PEARLAND WILL MAINTAIN TRAFFIC SIGNALS AND ILLUMINATION WITHIN CITY OF PEARLAND LIMITS.



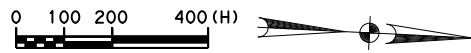
**HNTB**  
HNTB Corporation  
The HNTB Companies  
Engineers Architects Planners  
TBPE FIRM NO. 420

ATTACHMENT 1-1  
SH 288  
DEVELOPMENT, OPERATIONS,  
AND MAINTENANCE OF THE  
HARRIS CO PROJECT

DSN:	FED. RD. DIV. NO.	STATE	PROJECT NO.			HIGHWAY NO.
CK:	6	TEXAS				SH 288
DRN:	STATE DISTRICT	COUNTY	CONTROL NO.	SECTION NO.	JOB NO.	SHEET NO.
CK:	HOU	HARRIS				2



Scale: 400, 000000: 1, 000000  
Pen Table: \\houw00\jobs\59004\TECHPROD\SH 288\Draw\Plots\59004\*SH288\*11X17, pen  
Design File names: \\houw00\jobs\59004\TECHPROD\SH 288\Draw\Draw\Exhibit\Harris County Attachment 1-1 (OandM Work Limits)\288Exhibit 1-1\*3, d  
\$TIME\$



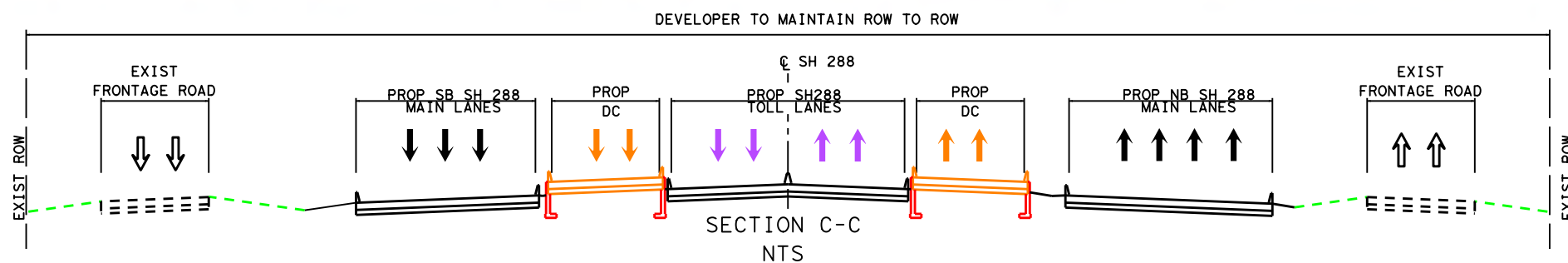
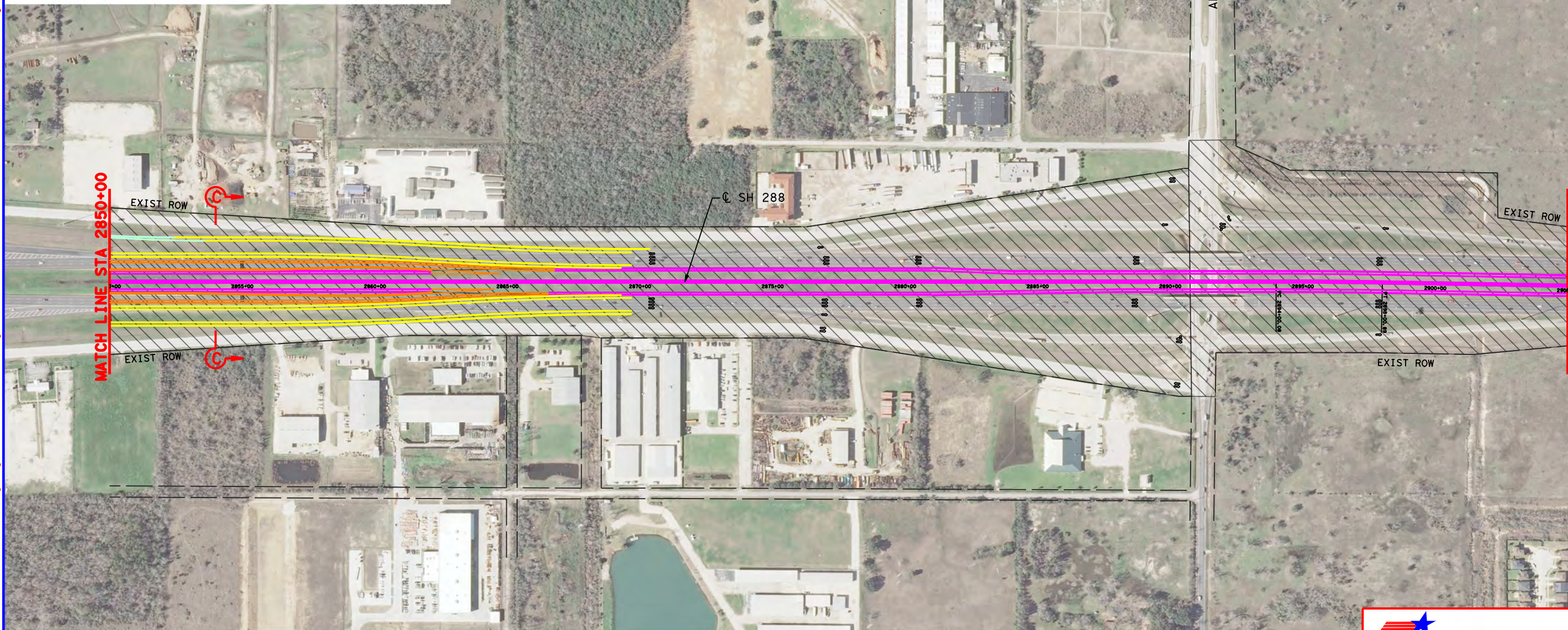
### LEGEND



LIMITS OF DEVELOPER'S  
CONSTRUCTION, OPERATIONS, AND  
MAINTENANCE RESPONSIBILITIES

### NOTES

1. DEVELOPER SHALL MAINTAIN ALL EXISTING AND PROPOSED WATER QUALITY FEATURES, OPEN CHANNELS AND DRAINAGE STRUCTURES WITHIN THE SH 288 ROW.
2. THE ROADWAY CONFIGURATION IS FOR ILLUSTRATIVE PURPOSES ONLY.
3. THE EXISTING RIGHT-OF-WAY SHOWN IS FOR ILLUSTRATIVE PURPOSES ONLY, REFER TO EXISTING ROW MAPS FOR ROW INFORMATION AND LIMITS.
4. CITY OF HOUSTON WILL MAINTAIN TRAFFIC SIGNALS AND ILLUMINATION WITHIN CITY OF HOUSTON LIMITS.



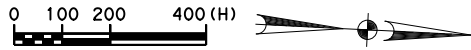
**HNTB**  
HNTB Corporation  
The HNTB Companies  
Engineers Architects Planners  
TBPE FIRM NO. 420

**ATTACHMENT 1-1**  
**SH 288**  
**DEVELOPMENT, OPERATIONS,**  
**AND MAINTENANCE OF THE**  
**HARRIS CO PROJECT**

DSN:	FED. RD. DIV. NO.	STATE	PROJECT NO.	HIGHWAY NO.
CK:	6	TEXAS		SH 288
DRN:	STATE DISTRICT	COUNTY	CONTROL NO.	SECTION NO.
CK:	HOU	HARRIS		3



draillon  
Pen Tables: \\houw00\jobs\59004\TECHPROD\SH 288\Rdwy\Plots\59004\*SH288\*11\117.pen  
Design File names: \\houw00\jobs\59004\TECHPROD\SH 288\Rdwy\Draw\Exhibit\Harris County Attachment 1-1 (Grand Work Limits)\288Exhibit 1-1\*4.dgn  
Scale: 400, 000000: 1, 000000  
\$TIME\$  
\$DATE\$



### LEGEND



LIMITS OF DEVELOPER'S  
CONSTRUCTION, OPERATIONS, AND  
MAINTENANCE RESPONSIBILITIES

### NOTES

1. DEVELOPER SHALL MAINTAIN ALL EXISTING AND PROPOSED WATER QUALITY FEATURES, OPEN CHANNELS AND DRAINAGE STRUCTURES DEVELOPER WITHIN THE SH 288 ROW.
2. THE ROADWAY CONFIGURATION IS FOR ILLUSTRATIVE PURPOSES ONLY.
3. THE EXISTING RIGHT-OF-WAY SHOWN IS FOR ILLUSTRATIVE PURPOSES ONLY, REFER TO EXISTING ROW MAPS FOR ROW INFORMATION AND LIMITS.
4. CITY OF HOUSTON WILL MAINTAIN TRAFFIC SIGNALS AND ILLUMINATION WITHIN CITY OF HOUSTON LIMITS.

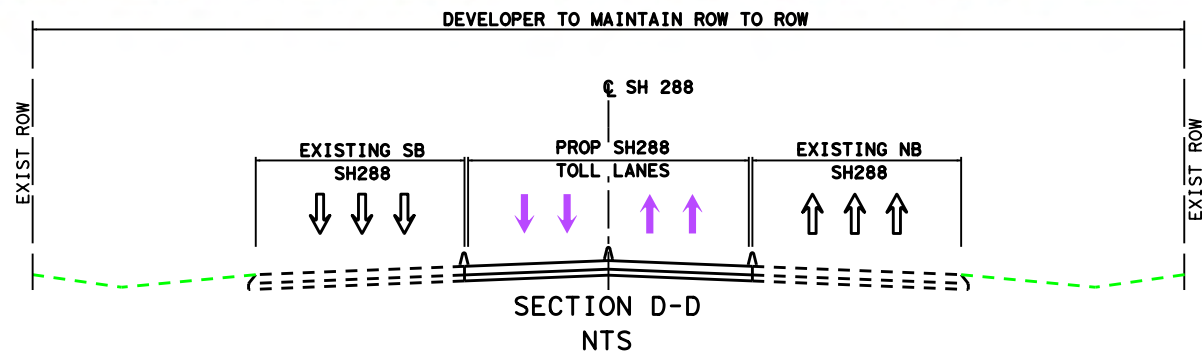
MATCH LINE STA 2905+00

EXIST ROW

EXIST ROW

SH 288

MATCH LINE STA 2960+00



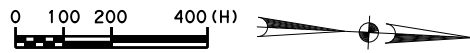
**HNTB**  
HNTB Corporation  
The HNTB Companies  
Engineers Architects Planners  
TBPE FIRM NO. 420

ATTACHMENT 1-1  
SH 288  
DEVELOPMENT, OPERATIONS,  
AND MAINTENANCE OF THE  
HARRIS CO PROJECT

DSN:	FED. RD. DIV. NO.	STATE	PROJECT NO.		HIGHWAY NO.	
CK:	6	TEXAS			SH 288	
DRN:	STATE DISTRICT	COUNTY	CONTROL NO.	SECTION NO.	JOB NO.	SHEET NO.
CK:	HOU	HARRIS				4



Scale: 400, 000000: 1, 000000  
Pen Tables: \\houw00\jobs\59004\TECHPROD\SH 288\Rdwy\Plots\59004\*SH288\*11\17, pen  
Design File names: \\houw00\jobs\59004\TECHPROD\SH 288\Rdwy\Plots\59004\*SH288\*11\17, pen  
Attachment 1-1 (OandM Work Limits)\288Exhibit 1-1\*5, d  
\$TIME\$  
\$DATE\$



### LEGEND



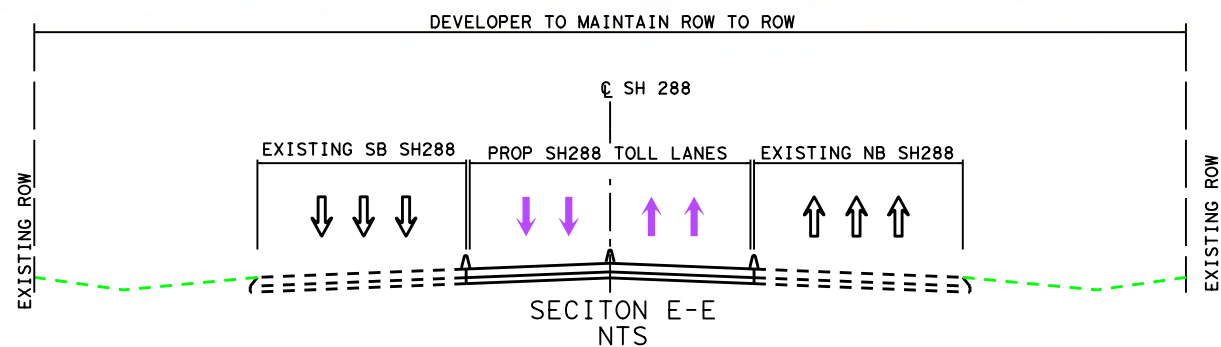
LIMITS OF DEVELOPER'S  
CONSTRUCTION, OPERATIONS, AND  
MAINTENANCE RESPONSIBILITIES

### NOTES

1. DEVELOPER SHALL MAINTAIN ALL EXISTING AND PROPOSED WATER QUALITY FEATURES, OPEN CHANNELS AND DRAINAGE STRUCTURES WITHIN THE SH 288 ROW.
2. THE ROADWAY CONFIGURATION IS FOR ILLUSTRATIVE PURPOSES ONLY.
3. THE EXISTING RIGHT-OF-WAY SHOWN IS FOR ILLUSTRATIVE PURPOSES ONLY, REFER TO EXISTING ROW MAPS FOR ROW INFORMATION AND LIMITS.
4. CITY OF HOUSTON WILL MAINTAIN TRAFFIC SIGNALS AND ILLUMINATION WITHIN CITY OF HOUSTON LIMITS.

MATCH LINE STA 2960+00

MATCH LINE STA 3015+00



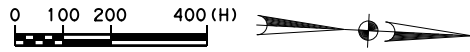
**HNTB**  
HNTB Corporation  
The HNTB Companies  
Engineers Architects Planners  
TBPE FIRM NO. 420

ATTACHMENT 1-1  
SH 288  
DEVELOPMENT, OPERATIONS,  
AND MAINTENANCE OF THE  
HARRIS CO PROJECT

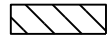
HARRIS CO PROJECT						
DSN:	FED. RD. DIV. NO.	STATE	PROJECT NO.		HIGHWAY NO.	
CK:	6	TEXAS			SH 288	
DRN:	STATE DISTRICT	COUNTY	CONTROL NO.	SECTION NO.	JOB NO.	SHEET NO.
CK:	HOU	HARRIS				5



chailion  
Pen Tables\\Hou000\Jobs\59004\TECHPROD\SH 288\Raw\Plots\59004\*SH288\*11X17.pen  
Design File names\\Hou000\Jobs\59004\TECHPROD\SH 288\Raw\Plots\59004\*SH288\*11X17.pen  
Scale: 400, 000000: 1, 000000  
\$TIME\$  
\$DATE\$  
1-1 (Grand Work Limits)\288\Exhibit 1-1\*6.dgn



**LEGEND**



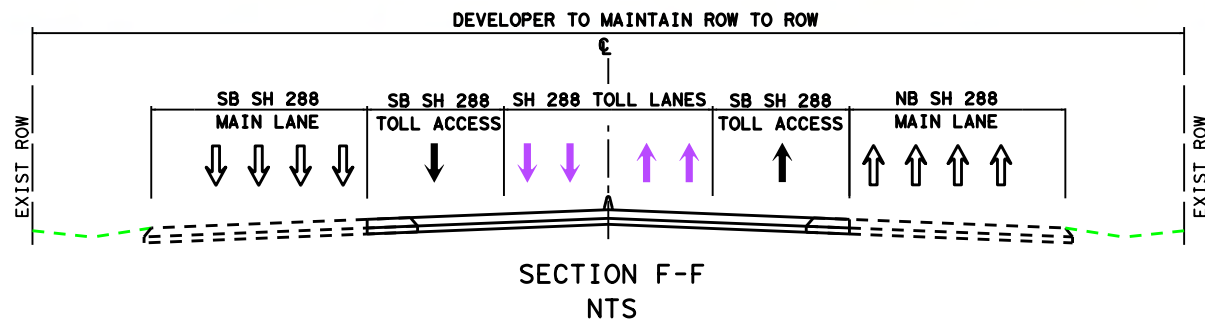
LIMITS OF DEVELOPER'S  
CONSTRUCTION, OPERATIONS, AND  
MAINTENANCE RESPONSIBILITIES

**NOTES**

1. DEVELOPER SHALL MAINTAIN ALL EXISTING AND PROPOSED WATER QUALITY FEATURES, OPEN CHANNELS AND DRAINAGE STRUCTURES WITHIN THE SH 288 ROW.
2. THE ROADWAY CONFIGURATION IS FOR ILLUSTRATIVE PURPOSES ONLY.
3. THE EXISTING RIGHT-OF-WAY SHOWN IS FOR ILLUSTRATIVE PURPOSES ONLY, REFER TO EXISTING ROW MAPS FOR ROW INFORMATION AND LIMITS.
4. CITY OF HOUSTON WILL MAINTAIN TRAFFIC SIGNALS AND ILLUMINATION WITHIN CITY OF HOUSTON LIMITS.

MATCH LINE STA 3015+00

MATCH LINE STA 3070+00



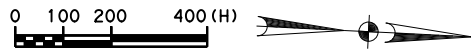
**HNTB**  
HNTB Corporation  
The HNTB Companies  
Engineers Architects Planners  
TBPE FIRM NO. 420

ATTACHMENT 1-1  
SH 288  
DEVELOPMENT, OPERATIONS,  
AND MAINTENANCE OF THE  
HARRIS CO PROJECT

DSN:	FED. RD. DIV. NO.	STATE	PROJECT NO.			HIGHWAY NO.
CK:	6	TEXAS				SH 288
DRN:	STATE DISTRICT	COUNTY	CONTROL NO.	SECTION NO.	JOB NO.	SHEET NO.
CK:	HOU	HARRIS				6



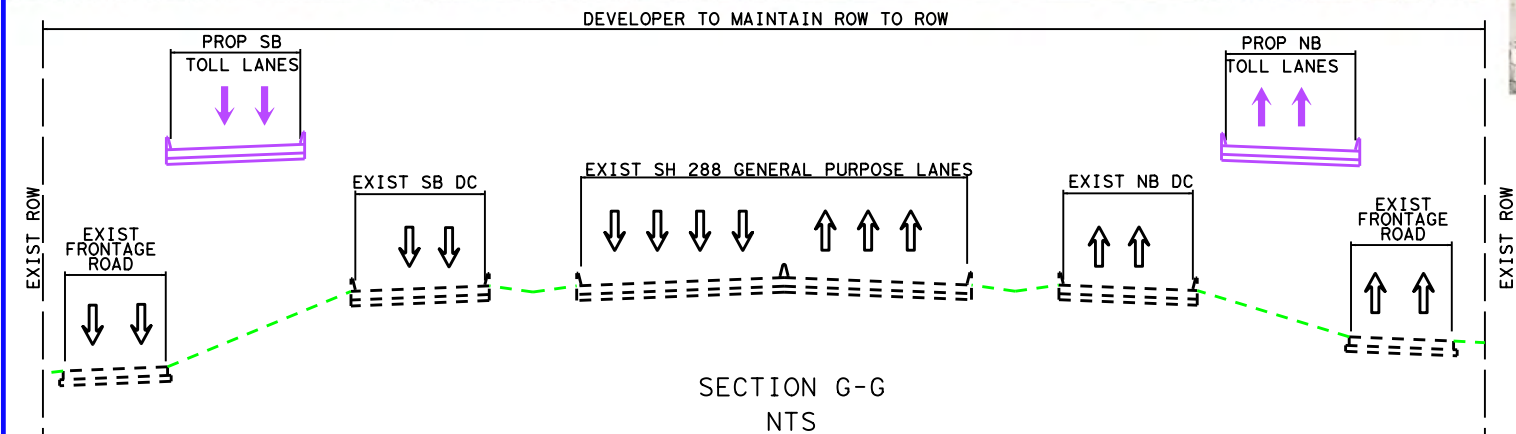
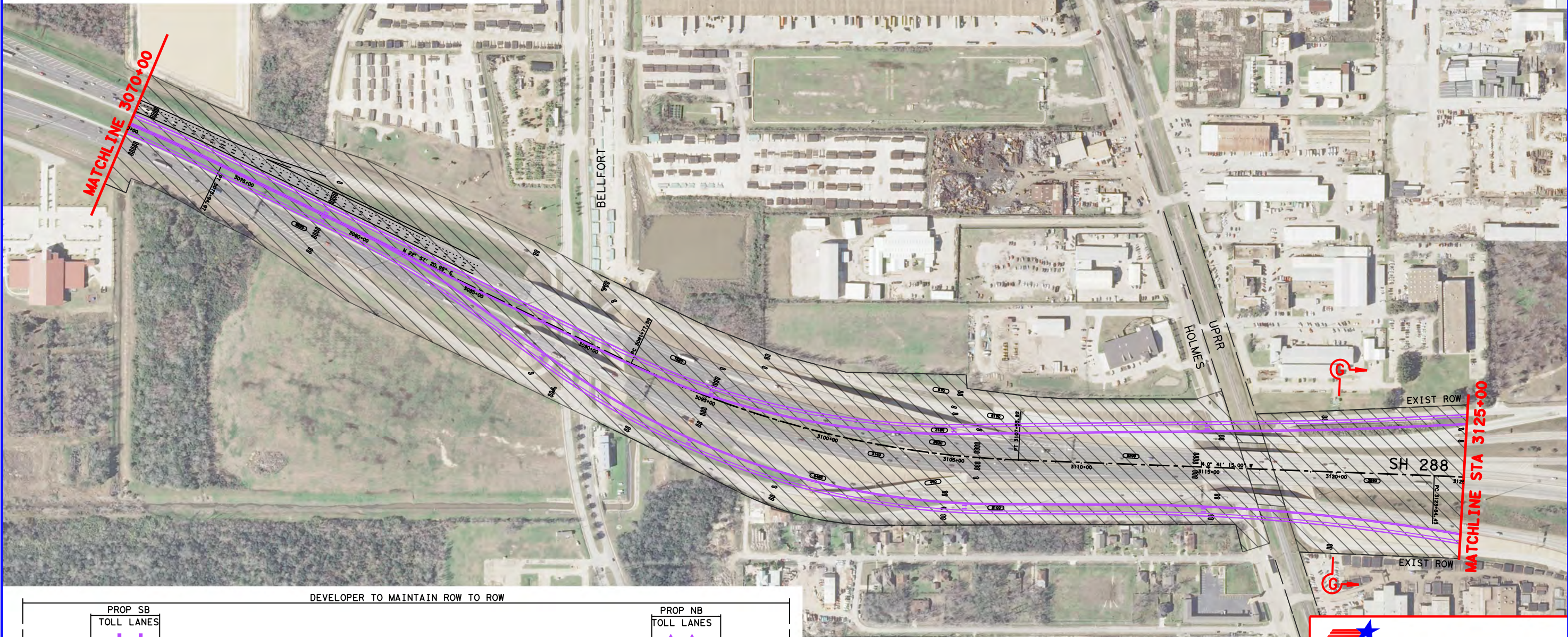
draillon  
Pen Tables: \\houw00\jobs\59004\TECHPROD\SH 288\rdwy\plots\59004\SH288\11\17.pcn  
Design File names: \\houw00\jobs\59004\TECHPROD\SH 288\rdwy\dwg\Exhibit\Harris County Attachment 1-1 (OandM Work Limits)\288Exhibit 1-1\17.dgn  
Scale: 400, 000000: 1, 000000  
\$TIME\$  
\$DATE\$



**LEGEND**  
LIMITS OF DEVELOPER'S  
CONSTRUCTION, OPERATIONS, AND  
MAINTENANCE RESPONSIBILITIES

**NOTES**

1. DEVELOPER SHALL MAINTAIN ALL EXISTING AND PROPOSED WATER QUALITY FEATURES, OPEN CHANNELS AND DRAINAGE STRUCTURES WITHIN THE SH 288 ROW.
2. THE ROADWAY CONFIGURATION IS FOR ILLUSTRATIVE PURPOSES ONLY.
3. THE EXISTING RIGHT-OF-WAY SHOWN IS FOR ILLUSTRATIVE PURPOSES ONLY, REFER TO EXISTING ROW MAPS FOR ROW INFORMATION AND LIMITS.
4. CITY OF HOUSTON WILL MAINTAIN TRAFFIC SIGNALS AND ILLUMINATION WITHIN CITY OF HOUSTON LIMITS.
5. DEVELOPER RESPONSIBLE FOR MAINTENANCE OF BRIDGES OVER UPRR ROW INCLUDING SUBSTRUCTURE OF EXISTING BRIDGES IN UPRR ROW. UPRR ROW AND DITCHES UNDER ROADWAY BRIDGES IS THE RESPONSIBILITY OF UPRR.



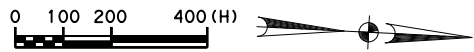
**HNTB**  
HNTB Corporation  
The HNTB Companies  
Engineers Architects Planners  
TBPE FIRM NO. 420

**ATTACHMENT 1-1**  
**SH 288**  
**DEVELOPMENT, OPERATIONS,**  
**AND MAINTENANCE OF THE**  
**HARRIS CO PROJECT**

DSN:	FED. RD. DIV. NO.	STATE	PROJECT NO.		HIGHWAY NO.	
CK:	6	TEXAS			SH 288	
DRN:	STATE DISTRICT	COUNTY	CONTROL NO.	SECTION NO.	JOB NO.	SHEET NO.
CK:	HOU	HARRIS				7



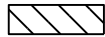
Scale: 400, 000000: 1, 000000  
Pen Tables: \\Hou000\Jobs\59004\TECHPROD\SH 288\Draw\Plots\59004\SH288\11\117, pen  
Design File names: \\Hou000\Jobs\59004\TECHPROD\SH 288\Draw\Draw\Exhibit\Harris County Attachment 1-1 (OandM Work Limits)\288Exhibit 1-1\*8, d  
\$TIME\$



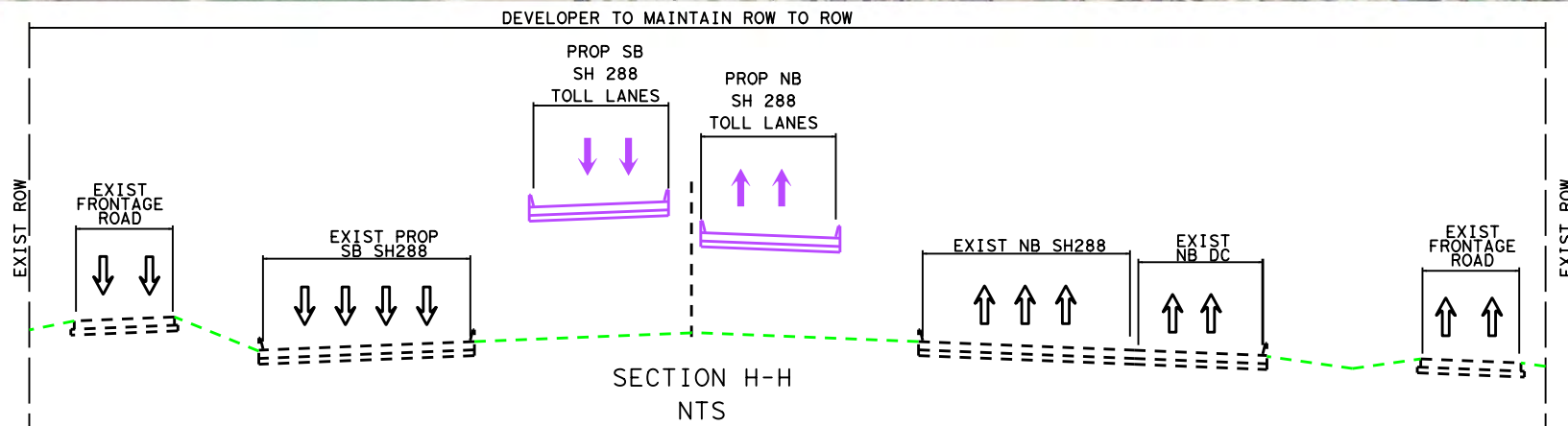
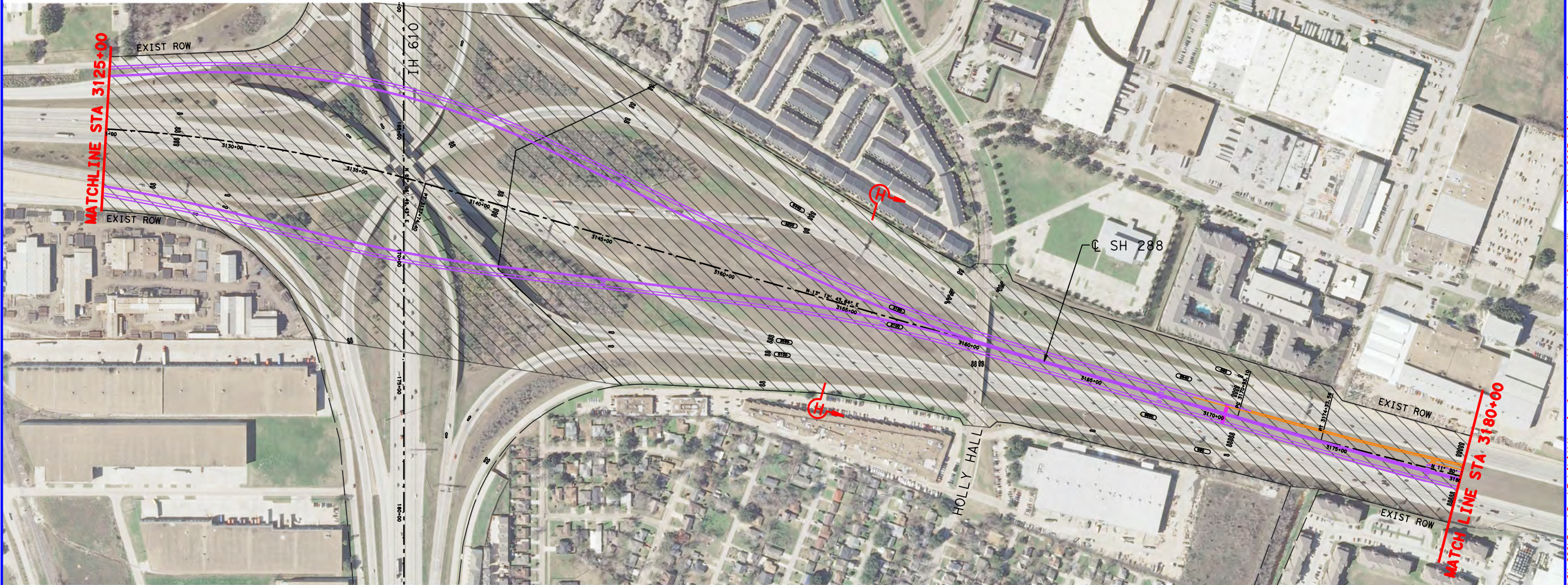
### NOTES

1. DEVELOPER SHALL MAINTAIN ALL EXISTING AND PROPOSED WATER QUALITY FEATURES, OPEN CHANNELS AND DRAINAGE STRUCTURES WITHIN THE SH 288 ROW.
2. THE ROADWAY CONFIGURATION IS FOR ILLUSTRATIVE PURPOSES ONLY.
3. THE EXISTING RIGHT-OF-WAY SHOWN IS FOR ILLUSTRATIVE PURPOSES ONLY, REFER TO EXISTING ROW MAPS FOR ROW INFORMATION AND LIMITS.
4. SEE SHEETS 15 AND 16 FOR O&M LIMITS ON IH 610.
5. CITY OF HOUSTON WILL MAINTAIN TRAFFIC SIGNALS AND ILLUMINATION WITHIN CITY OF HOUSTON LIMITS.
6. SEE SHEETS 15 AND 16 FOR IH 610 INTERCHANGE WORK.

### LEGEND



LIMITS OF DEVELOPER'S  
CONSTRUCTION, OPERATIONS, AND  
MAINTENANCE RESPONSIBILITIES



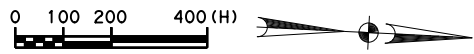
**HNTB**  
HNTB Corporation  
The HNTB Companies  
Engineers Architects Planners  
TBPE FIRM NO. 420

ATTACHMENT 1-1  
SH 288  
DEVELOPMENT, OPERATIONS,  
AND MAINTENANCE OF THE  
HARRIS CO PROJECT

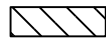
DSN:	FED. RD. DIV. NO.	STATE	PROJECT NO.			HIGHWAY NO.
CK:	6	TEXAS				SH 288
DRN:	STATE DISTRICT	COUNTY	CONTROL NO.	SECTION NO.	JOB NO.	SHEET NO.
CK:	HOU	HARRIS				8



Scale: 400, 000000: 1, 000000 \$  
Pen Tables: \\houw00\jobs\59004\TECHPROD\SH 288\Draw\Plots\59004\*SH288\*11X17, pen  
Design File Names: \\houw00\jobs\59004\TECHPROD\SH 288\Draw\Draw\Exhibit\Harris County Attachment 1-1 (OandM Work Limits)\288Exhibit 1-1\*9, d  
\$TIME\$



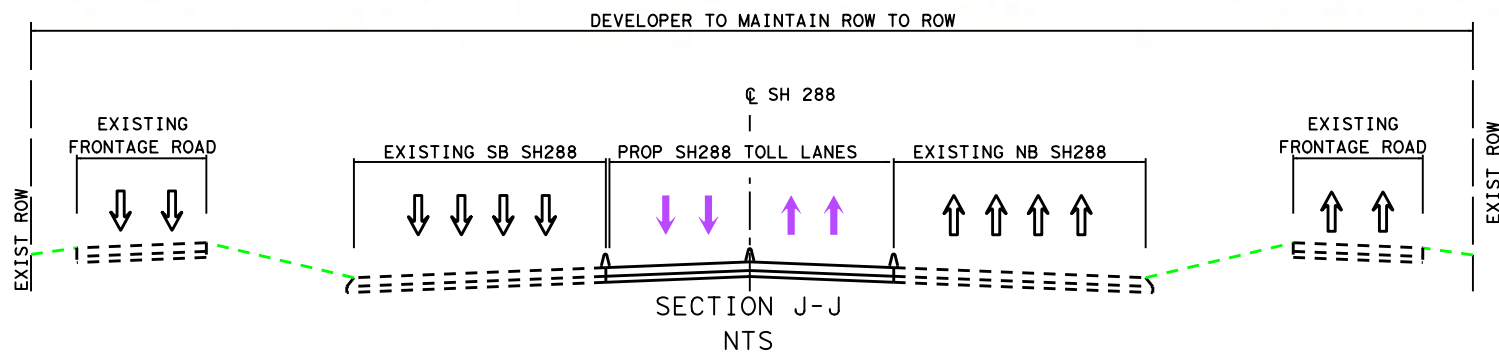
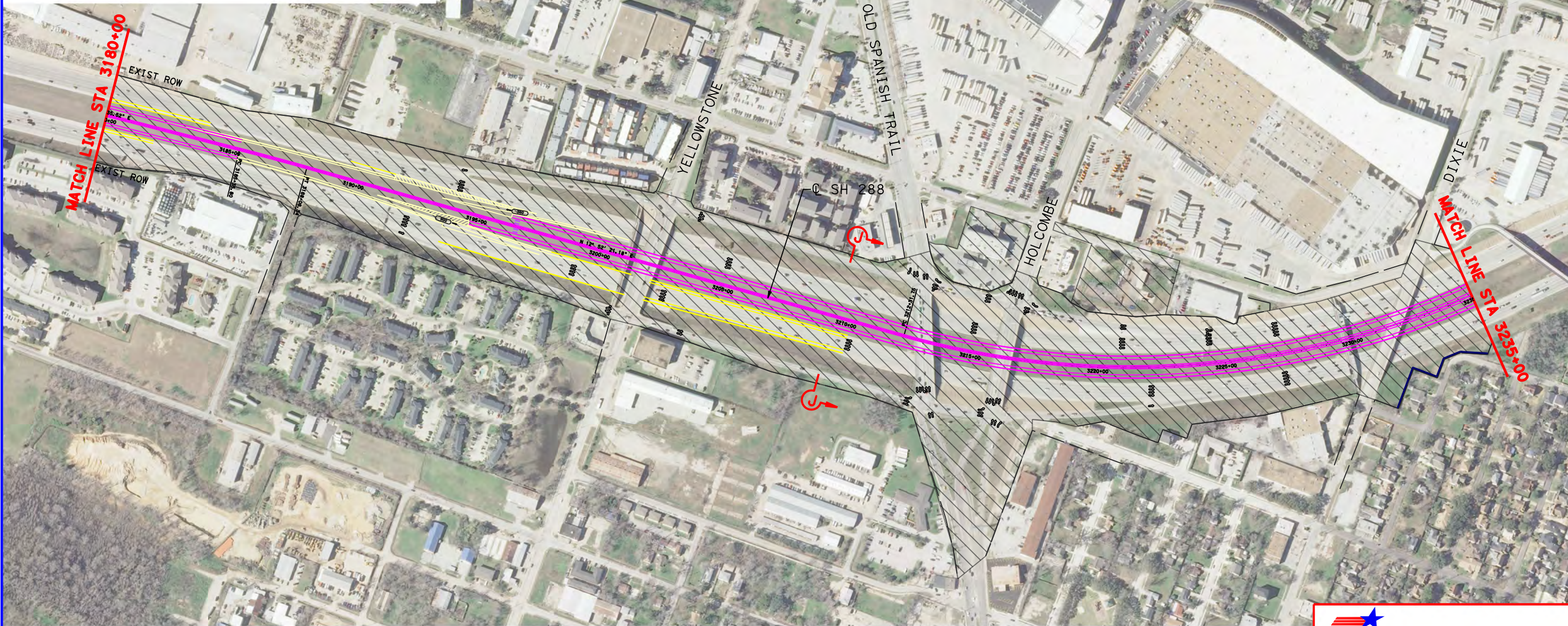
### LEGEND



LIMITS OF DEVELOPER'S  
CONSTRUCTION, OPERATIONS, AND  
MAINTENANCE RESPONSIBILITIES

### NOTES

1. DEVELOPER SHALL MAINTAIN ALL EXISTING AND PROPOSED WATER QUALITY FEATURES, OPEN CHANNELS AND DRAINAGE STRUCTURES WITHIN THE SH 288 ROW.
2. THE ROADWAY CONFIGURATION IS FOR ILLUSTRATIVE PURPOSES ONLY.
3. THE EXISTING RIGHT-OF-WAY SHOWN IS FOR ILLUSTRATIVE PURPOSES ONLY, REFER TO EXISTING ROW MAPS FOR ROW INFORMATION AND LIMITS.
4. CITY OF HOUSTON WILL MAINTAIN TRAFFIC SIGNALS AND ILLUMINATION WITHIN CITY OF HOUSTON LIMITS.



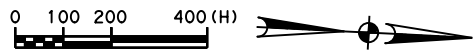
**HNTB** HNTB Corporation  
The HNTB Companies  
Engineers Architects Planners  
TBPE FIRM NO. 420

ATTACHMENT 1-1  
SH 288  
DEVELOPMENT, OPERATIONS,  
AND MAINTENANCE OF THE  
HARRIS CO PROJECT

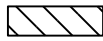
DSN:	FED. RD. DIV. NO.	STATE	PROJECT NO.	HIGHWAY NO.
CK:	6	TEXAS		SH 288
DRN:	STATE DISTRICT	COUNTY	CONTROL NO.	SECTION NO.
CK:	HOU	HARRIS		9



Scale: 400' 0.000000: 1.000000  
Pen: Tab: \\Hou000\Jobs\59004\TECHPROD\SH 288\Draw\Plots\59004\SH288\111X17.pn  
Design: \\Hou000\Jobs\59004\TECHPROD\SH 288\Draw\Draw\Exhibit\Harris County Attachment 1-1 (Grand Work Limits)\288Exhibit 1-1\*10.dgn  
DATE: 11/17/17  
TIME: 10:10:10



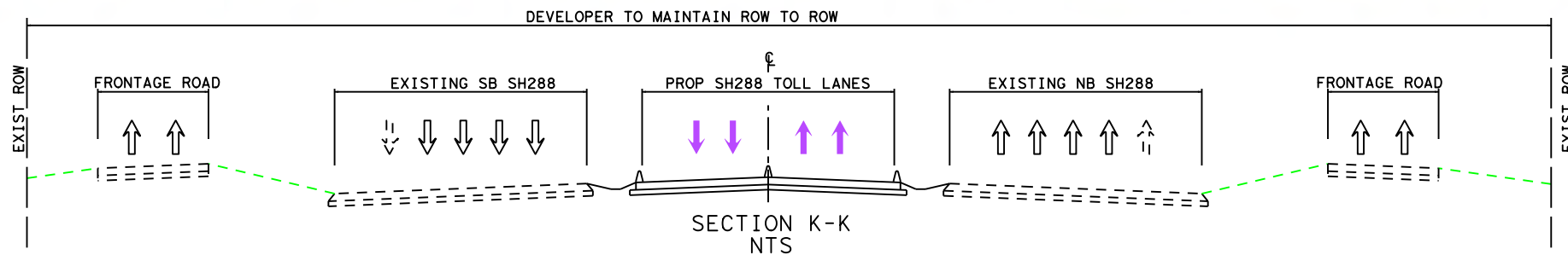
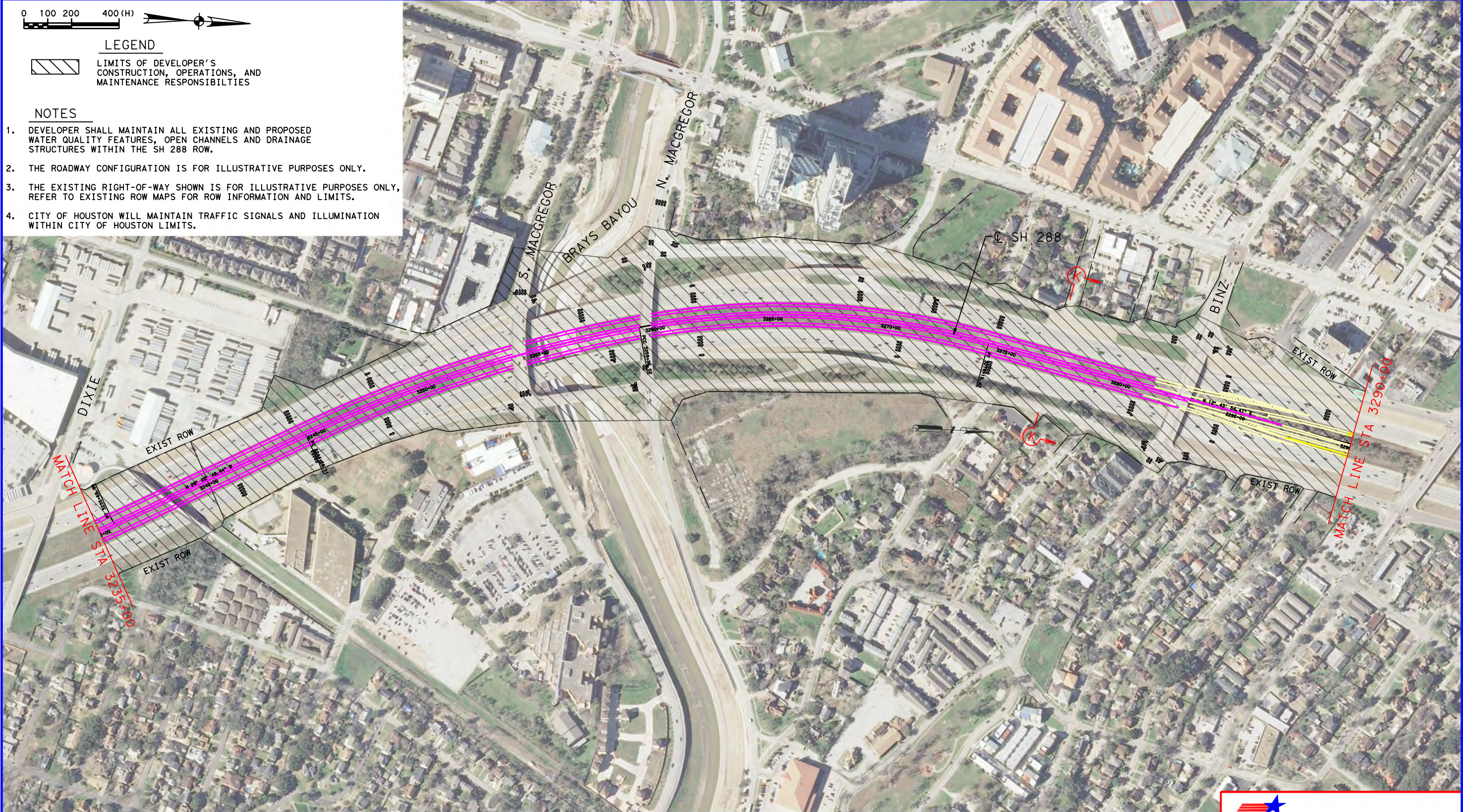
### LEGEND



LIMITS OF DEVELOPER'S  
CONSTRUCTION, OPERATIONS, AND  
MAINTENANCE RESPONSIBILITIES

### NOTES

1. DEVELOPER SHALL MAINTAIN ALL EXISTING AND PROPOSED WATER QUALITY FEATURES, OPEN CHANNELS AND DRAINAGE STRUCTURES WITHIN THE SH 288 ROW.
2. THE ROADWAY CONFIGURATION IS FOR ILLUSTRATIVE PURPOSES ONLY.
3. THE EXISTING RIGHT-OF-WAY SHOWN IS FOR ILLUSTRATIVE PURPOSES ONLY, REFER TO EXISTING ROW MAPS FOR ROW INFORMATION AND LIMITS.
4. CITY OF HOUSTON WILL MAINTAIN TRAFFIC SIGNALS AND ILLUMINATION WITHIN CITY OF HOUSTON LIMITS.



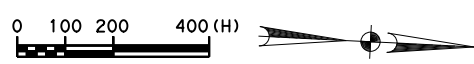
**HNTB** HNTB Corporation  
The HNTB Companies  
Engineers Architects Planners  
TBPE FIRM NO. 420

ATTACHMENT 1-1  
SH 288  
DEVELOPMENT, OPERATIONS,  
AND MAINTENANCE OF THE  
HARRIS CO PROJECT

DSN:	FED. RD. DIV. NO.	STATE	PROJECT NO.	HIGHWAY NO.
CK:	6	TEXAS		SH 288
DRN:	STATE DISTRICT	COUNTY	CONTROL NO.	SECTION NO.
CK:	HOU	HARRIS		10



Scale: 400, 000000: 1, 000000 \$TIME\$  
Pen Tables: \\Hou000\Jobs\59004\TECHPROD\SH 288\Raw\Plots\59004\*SH288\*11\117, pen  
Design File Names: \\Hou000\Jobs\59004\TECHPROD\SH 288\Raw\Plots\59004\*SH288\*11\117, pen  
Design File Names: \\Hou000\Jobs\59004\TECHPROD\SH 288\Raw\Plots\59004\*SH288\*11\117, pen

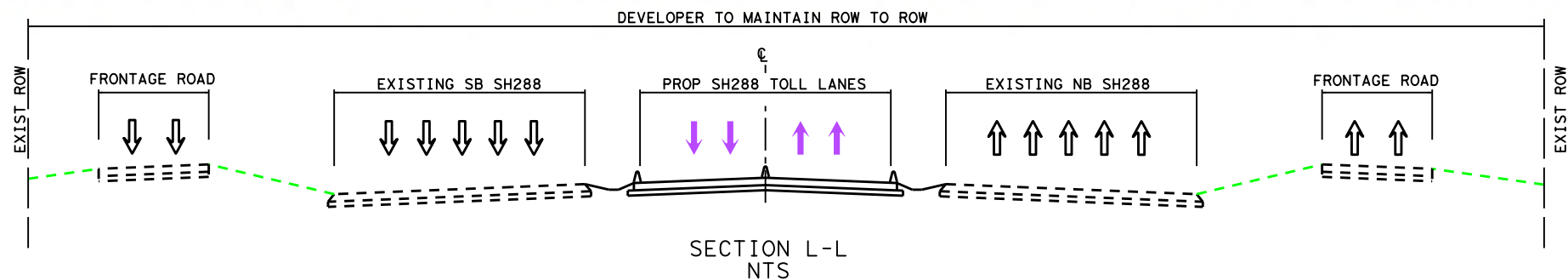
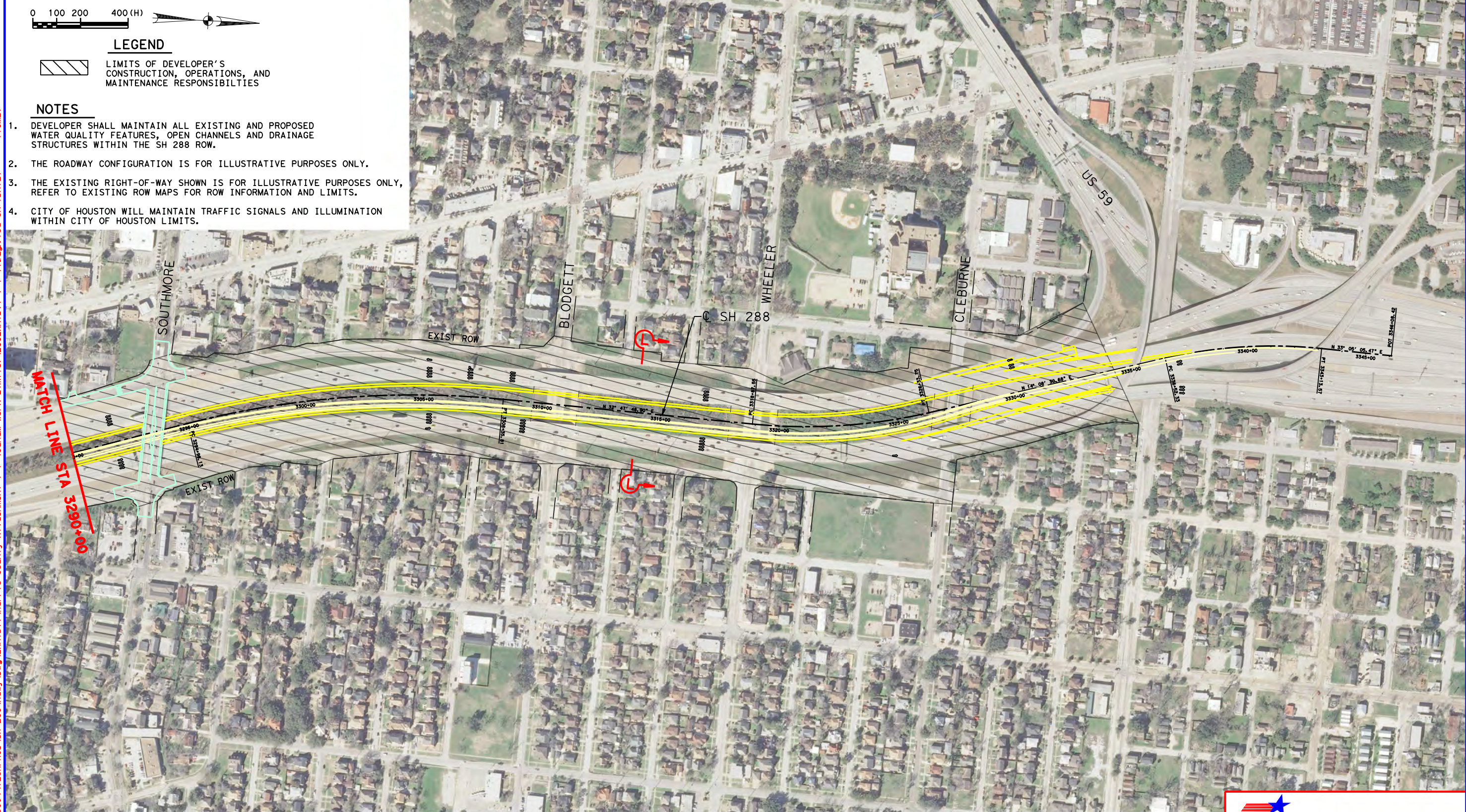


**LEGEND**

 LIMITS OF DEVELOPER'S CONSTRUCTION, OPERATIONS, AND MAINTENANCE RESPONSIBILITIES

**NOTES**

1. DEVELOPER SHALL MAINTAIN ALL EXISTING AND PROPOSED WATER QUALITY FEATURES, OPEN CHANNELS AND DRAINAGE STRUCTURES WITHIN THE SH 288 ROW.
2. THE ROADWAY CONFIGURATION IS FOR ILLUSTRATIVE PURPOSES ONLY.
3. THE EXISTING RIGHT-OF-WAY SHOWN IS FOR ILLUSTRATIVE PURPOSES ONLY, REFER TO EXISTING ROW MAPS FOR ROW INFORMATION AND LIMITS.
4. CITY OF HOUSTON WILL MAINTAIN TRAFFIC SIGNALS AND ILLUMINATION WITHIN CITY OF HOUSTON LIMITS.



**HNTB** HNTB Corporation  
The HNTB Companies  
Engineers Architects Planners  
TBPE FIRM NO. 420

**ATTACHMENT 1-1**  
**SH 288**  
**DEVELOPMENT, OPERATIONS,**  
**AND MAINTENANCE OF THE**  
**HARRIS CO PROJECT**

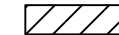
DSN:	FED. RD. DIV. NO.	STATE	PROJECT NO.	HIGHWAY NO.
CK:	6	TEXAS		SH 288
DRN:	STATE DISTRICT	COUNTY	CONTROL NO.	SECTION NO.
CK:	HOU	HARRIS		11



dnailion

Pen Table: \\Houw00\jobs\59004\TECHPROD\SH 288\Rdwy\plots\59004\*SH288\*1X17. pen

Design File name:	\\Hou00\Jobs\59004\TECHPROD\SH 288\Raw\Draw\Exhibit\Harris County Attachment 1-1	QandW Work Limits\288Exhibit 1-1\12 Rq	on:\$DATE\$
			\$TIME\$



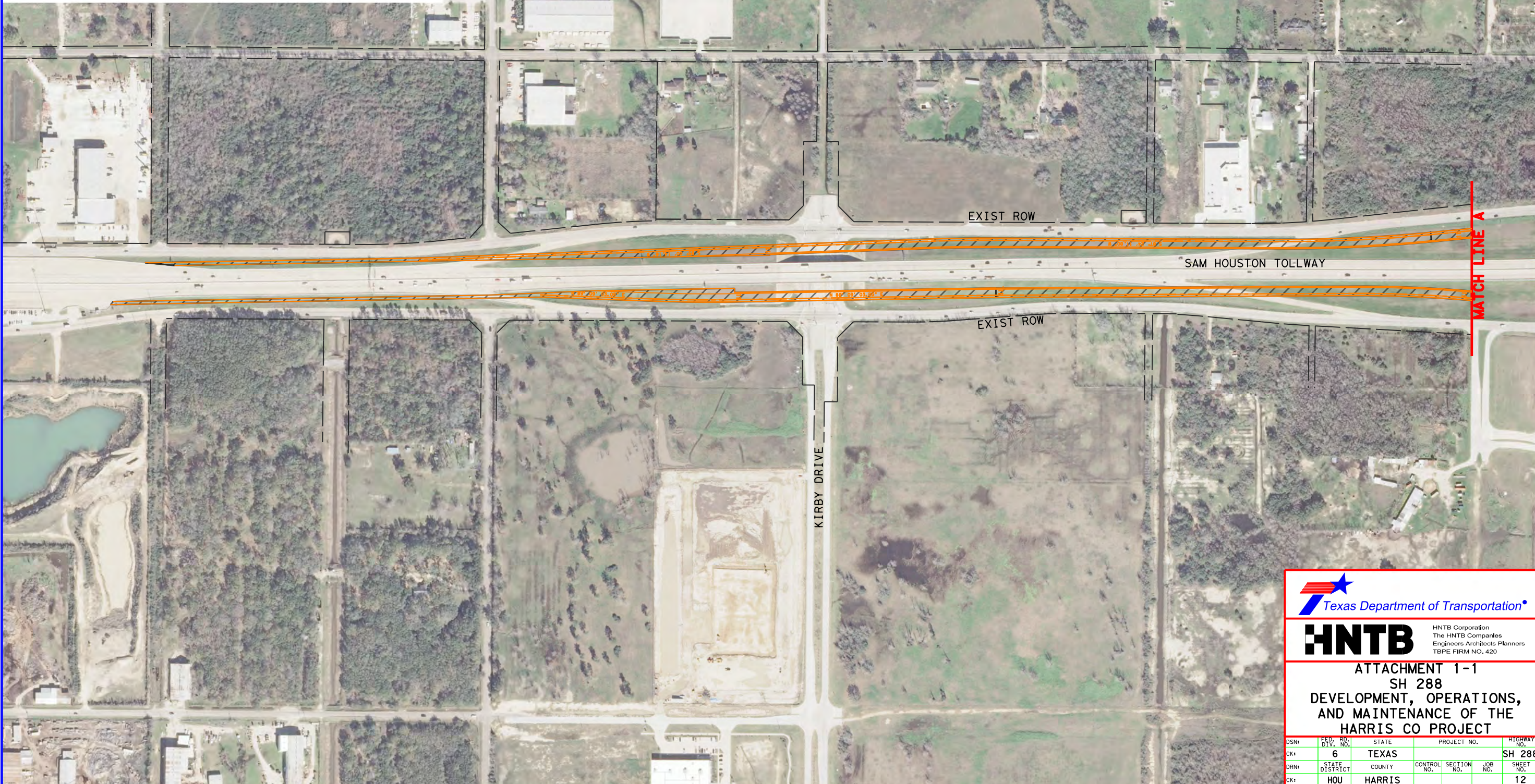
### LEGEND

## LIMITS OF DEVELOPER'S CONSTRUCTION, OPERATIONS, AND MAINTENANCE RESPONSIBILITIES



## NOTES

1. DEVELOPER SHALL MAINTAIN ALL EXISTING AND PROPOSED WATER QUALITY FEATURES, OPEN CHANNELS AND DRAINAGE STRUCTURES WITHIN THE SH 288 ROW.
2. THE ROADWAY CONFIGURATION IS FOR ILLUSTRATIVE PURPOSES ONLY.
3. THE EXISTING RIGHT-OF-WAY SHOWN IS FOR ILLUSTRATIVE PURPOSES ONLY, REFER TO EXISTING ROW MAPS FOR ROW INFORMATION AND LIMITS.
4. CITY OF HOUSTON WILL MAINTAIN TRAFFIC SIGNALS AND ILLUMINATION WITHIN CITY OF HOUSTON LIMITS.



## MATCH LINE A



**HNTB** HNTB Corporation  
The HNTB Companies  
Engineers Architects Planners  
TBPE FIRM NO. 420

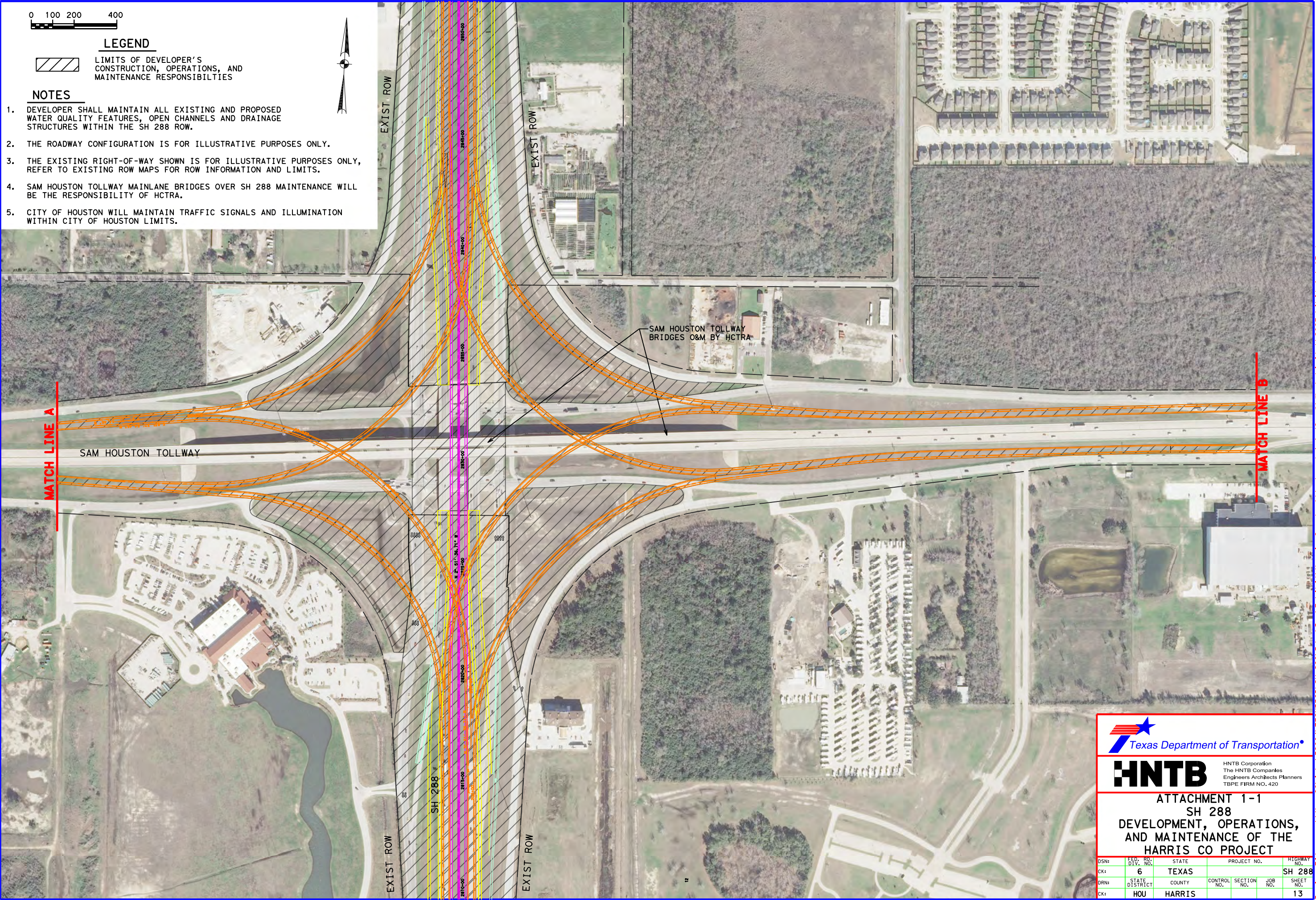
ATTACHMENT 1-1  
SH 288  
DEVELOPMENT, OPERATIONS,  
AND MAINTENANCE OF THE  
HARRIS CO PROJECT

DSN:	FED. RD. DIV. NO.	STATE	PROJECT NO.			HIGHWAY
CK:	6	TEXAS				SH 28
DRN:	STATE DISTRICT	COUNTY	CONTROL NO.	SECTION NO.	JOB NO.	SHEET NO.
CK:	HOU	HARRIS				12



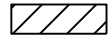
draillon  
Pen Tables \\Hou000\Jobs\59004\TECHPROD\SH 288\Draw\Plots\59004\*SH288\*11X17.pen  
Design Filenames \\Hou000\Jobs\59004\TECHPROD\SH 288\Draw\Draw\Exhibit\Harris County Attachment 1-1 (Grand Work Limits)\288Exhibit 1-1\*13.dgn

Scale: 400, 000000: 1, 000000  
\$TIME\$  
\$DATE\$



0 100 200 400

#### LEGEND



LIMITS OF DEVELOPER'S  
CONSTRUCTION, OPERATIONS, AND  
MAINTENANCE RESPONSIBILITIES

#### NOTES

1. DEVELOPER SHALL MAINTAIN ALL EXISTING AND PROPOSED WATER QUALITY FEATURES, OPEN CHANNELS AND DRAINAGE STRUCTURES WITHIN THE SH 288 ROW.
2. THE ROADWAY CONFIGURATION IS FOR ILLUSTRATIVE PURPOSES ONLY.
3. THE EXISTING RIGHT-OF-WAY SHOWN IS FOR ILLUSTRATIVE PURPOSES ONLY, REFER TO EXISTING ROW MAPS FOR ROW INFORMATION AND LIMITS.
4. SAM HOUSTON TOLLWAY MAINLANE BRIDGES OVER SH 288 MAINTENANCE WILL BE THE RESPONSIBILITY OF HCTRA.
5. CITY OF HOUSTON WILL MAINTAIN TRAFFIC SIGNALS AND ILLUMINATION WITHIN CITY OF HOUSTON LIMITS.



**HNTB**  
HNTB Corporation  
The HNTB Companies  
Engineers Architects Planners  
TBPE FIRM NO. 420

#### ATTACHMENT 1-1 SH 288 DEVELOPMENT, OPERATIONS, AND MAINTENANCE OF THE HARRIS CO PROJECT

DSN:	FED. RD. DIV. NO.	STATE	PROJECT NO.			HIGHWAY NO.
CK:	6	TEXAS				SH 288
DRN:	STATE DISTRICT	COUNTY	CONTROL NO.	SECTION NO.	JOB NO.	SHEET NO.
CK:	HOU	HARRIS				13



draillon  
Pen Tables \\Hou00\Jobs\59004\TECHPROD\SH 288\Rdw\Plots\59004\SH288\11\17.pen  
Design Filenames \\Hou00\Jobs\59004\TECHPROD\SH 288\Rdw\SH 288\Exhibit\Harris County Attachment 1-1 (Grand Work Limits)\288Exhibit 1-1\14.dgn  
Scale: 400, 000000: 1, 000000  
\$TIME\$

0 100 200 400

LEGEND



LIMITS OF DEVELOPER'S  
CONSTRUCTION, OPERATIONS, AND  
MAINTENANCE RESPONSIBILITIES

NOTES

1. DEVELOPER SHALL MAINTAIN ALL EXISTING AND PROPOSED WATER QUALITY FEATURES, OPEN CHANNELS AND DRAINAGE STRUCTURES WITHIN THE SH 288 ROW.
2. THE ROADWAY CONFIGURATION IS FOR ILLUSTRATIVE PURPOSES ONLY.
3. THE EXISTING RIGHT-OF-WAY SHOWN IS FOR ILLUSTRATIVE PURPOSES ONLY, REFER TO EXISTING ROW MAPS FOR ROW INFORMATION AND LIMITS.
4. CITY OF HOUSTON WILL MAINTAIN TRAFFIC SIGNALS AND ILLUMINATION WITHIN CITY OF HOUSTON LIMITS.

MATCH LINE B

EXIST ROW

SAM HOUSTON TOLLWAY

EXIST ROW

SCOTT ST



**HNTB**

HNTB Corporation  
The HNTB Companies  
Engineers Architects Planners  
TBPE FIRM NO. 420

ATTACHMENT 1-1  
SH 288  
DEVELOPMENT, OPERATIONS,  
AND MAINTENANCE OF THE  
HARRIS CO PROJECT

HARRIS COUNTY PROJECT						
DSN:	FED. RD. DIV. NO.	STATE	PROJECT NO.			HIGHWAY NO.
CK:	6	TEXAS				SH 288
DRN:	STATE DISTRICT	COUNTY	CONTROL NO.	SECTION NO.	JOB NO.	SHEET NO.
CK:	HOU	HARRIS				14

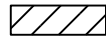


drai11on  
Pen Tab1es:\\Houw00\\Jobs\\59004\\TECHPROD\\SH 288\\Rdw\\Plots\\59004\\SH288\\11X17.pen  
Design Filenames:\\Houw00\\Jobs\\59004\\TECHPROD\\SH 288\\Rdw\\Dwg\\Exhibit\\Harris County Attachment 1-1 (OandM Work Limits)\\288Exhibit 1-1\*15.dgn

Scale: 400, 000000: 1, 000000  
\$TIME\$  
\$DATE\$

0 100 200 400 (H)

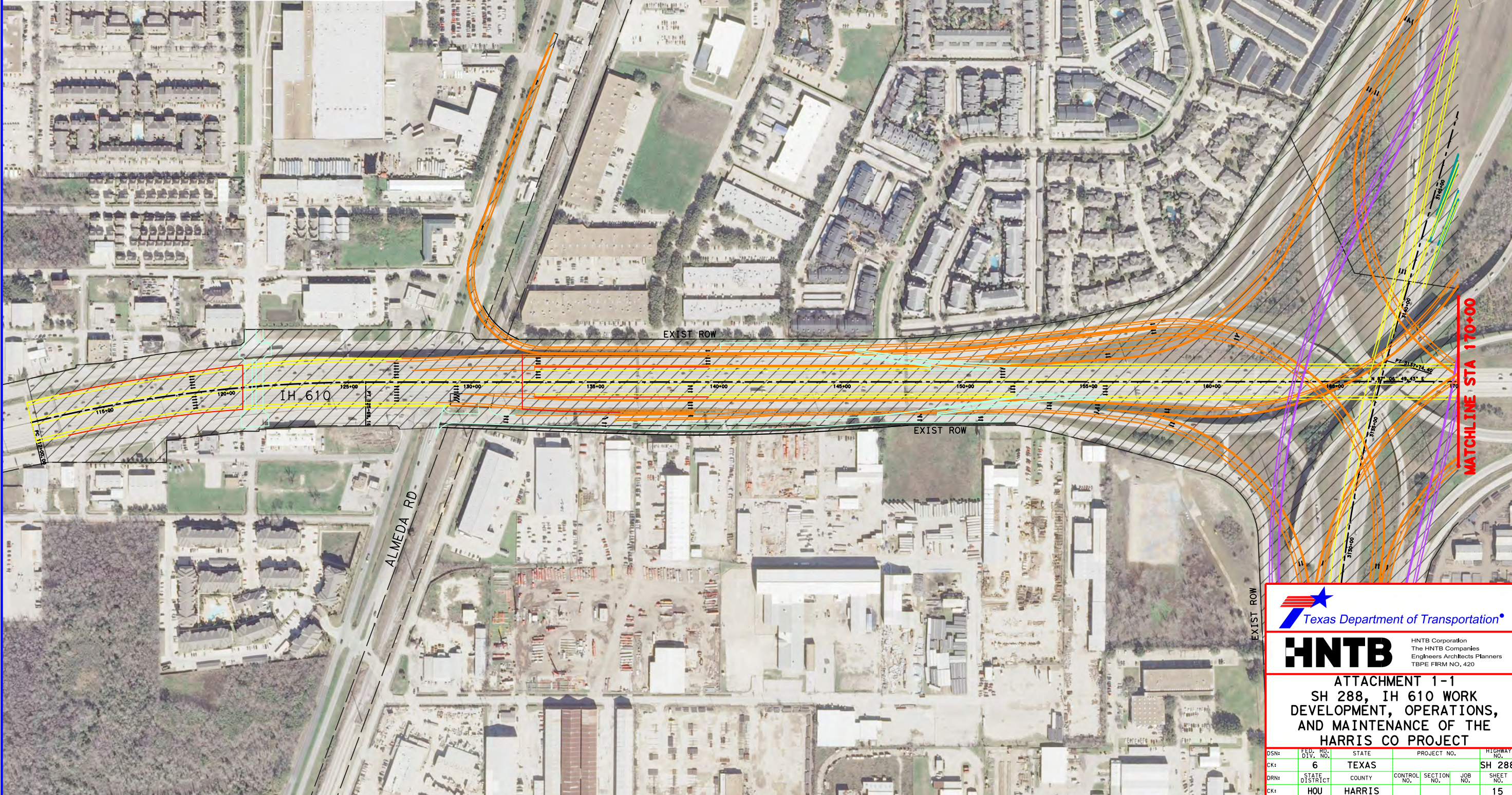
## LEGEND



LIMITS OF DEVELOPER'S  
CONSTRUCTION, OPERATIONS, AND  
MAINTENANCE RESPONSIBILITIES

## NOTES

1. DEVELOPER SHALL MAINTAIN ALL EXISTING AND PROPOSED WATER QUALITY FEATURES, OPEN CHANNELS AND DRAINAGE STRUCTURES WITHIN THE SH 288 ROW.
2. THE ROADWAY CONFIGURATION IS FOR ILLUSTRATIVE PURPOSES ONLY.
3. THE EXISTING RIGHT-OF-WAY SHOWN IS FOR ILLUSTRATIVE PURPOSES ONLY, REFER TO EXISTING ROW MAPS FOR ROW INFORMATION AND LIMITS.
4. CITY OF HOUSTON WILL MAINTAIN TRAFFIC SIGNALS AND ILLUMINATION WITHIN CITY OF HOUSTON LIMITS.



**HNTB**  
HNTB Corporation  
The HNTB Companies  
Engineers Architects Planners  
TBPE FIRM NO. 420

ATTACHMENT 1-1  
SH 288, IH 610 WORK  
DEVELOPMENT, OPERATIONS,  
AND MAINTENANCE OF THE  
HARRIS CO PROJECT

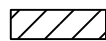
DSN:	FED. RD. DIV. NO.	STATE	PROJECT NO.	HIGHWAY NO.
CK:	6	TEXAS		SH 288
DRN:	STATE DISTRICT	COUNTY	CONTROL NO.	SECTION NO.
CK:	HOU	HARRIS		15



chailion  
Pen Tables \\Hou00\Jobs\59004\TECHPROD\SH 288\Draw\Plots\59004\*SH288\*11X17.pen  
Design Filenames \\Hou00\Jobs\59004\TECHPROD\SH 288\Draw\Draw\Exhibit\Harris County Attachment 1-1 (Grand Work Limits)\288Exhibit 1-1\*16.dgn  
Scale: 400, 000000: 1, 000000 \$ TIMES  
Printed on: \$DATE\$

0 100 200 400 (H)

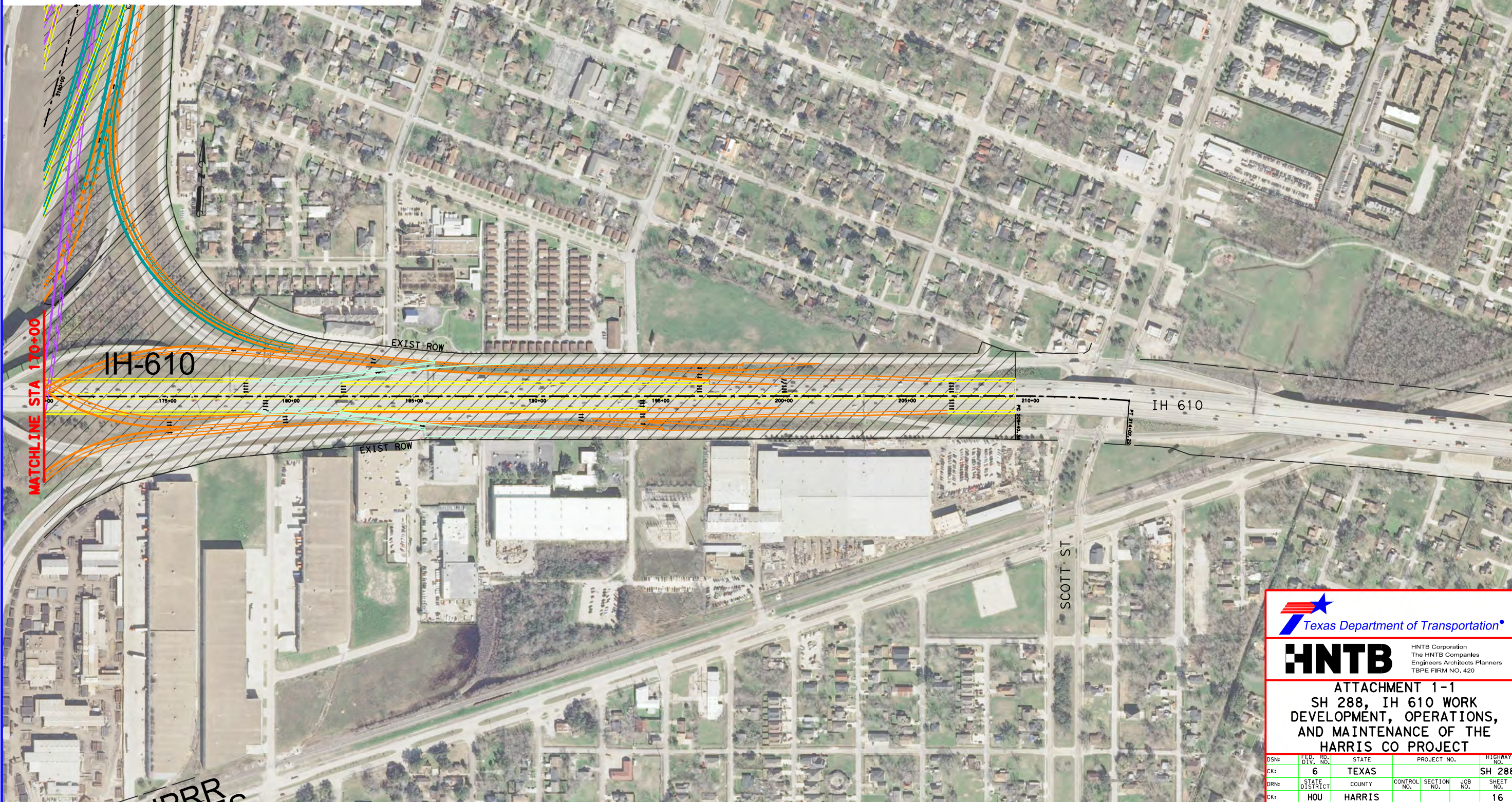
## LEGEND



LIMITS OF DEVELOPER'S  
CONSTRUCTION, OPERATIONS, AND  
MAINTENANCE RESPONSIBILITIES

## NOTES

1. DEVELOPER SHALL MAINTAIN ALL EXISTING AND PROPOSED WATER QUALITY FEATURES, OPEN CHANNELS AND DRAINAGE STRUCTURES WITHIN THE SH 288 ROW.
2. THE ROADWAY CONFIGURATION IS FOR ILLUSTRATIVE PURPOSES ONLY.
3. THE EXISTING RIGHT-OF-WAY SHOWN IS FOR ILLUSTRATIVE PURPOSES ONLY, REFER TO EXISTING ROW MAPS FOR ROW INFORMATION AND LIMITS.
4. CITY OF HOUSTON WILL MAINTAIN TRAFFIC SIGNALS AND ILLUMINATION WITHIN CITY OF HOUSTON LIMITS.



**HNTB**

HNTB Corporation  
The HNTB Companies  
Engineers Architects Planners  
TBPE FIRM NO. 420

ATTACHMENT 1-1  
SH 288, IH 610 WORK  
DEVELOPMENT, OPERATIONS,  
AND MAINTENANCE OF THE  
HARRIS CO PROJECT

DSN:	FED. RD. DIV. NO.	STATE	PROJECT NO.			HIGHWAY NO.
CK:	6	TEXAS				SH 288
DRN:	STATE DISTRICT	COUNTY	CONTROL NO.	SECTION NO.	JOB NO.	SHEET NO.
CK:	HOU	HARRIS				16