



TEXAS DEPARTMENT OF TRANSPORTATION



Public Hearing

State Highway (SH) 249

From FM 1774 in Pinehurst to FM 1774 North of Todd Mission

SH249
EXTENSION



TEXAS DEPARTMENT OF TRANSPORTATION

Welcome

State Highway (SH) 249 Extension

From FM 1774 in Pinehurst to
FM 1774 North of Todd Mission

Public Hearing

February 18, 2015

The environmental review, consultation, and other actions required by applicable Federal environmental laws for this project are being, or have been, carried out by TxDOT pursuant to 23 U.S.C. 327 and a Memorandum of Understanding dated December 16, 2014, and executed by FHWA and TxDOT.





The environmental review, consultation, and other actions required by applicable Federal environmental laws for this project are being, or have been, carried-out by TxDOT pursuant to 23 U.S.C. 327 and a Memorandum of Understanding dated December 16, 2014, and executed by FHWA and TxDOT.



Elected Officials



- Federal Register: January 23, 2015
- Texas Register: January 23, 2015
- Houston Chronicle : January 16, 2015 and February 6, 2015
- La Voz : January 18, 2015 and February 8, 2015
- Magnolia Potpourri : January 21, 2015 and February 4, 2015



- Exhibit Viewing and Registration
- Public Hearing Presentation
- Public Comment Session
- Adjourn Public Hearing



TEXAS DEPARTMENT OF TRANSPORTATION

Major Investment Study
(MIS) 2000 to 2002

Draft Environmental Impact Statement
(Draft EIS) 2003 to Present

Held 3 Public
Meetings
(Nov. 2000 to
Oct. 2001)

Released
MIS
(2002)

Filed Notice
of Intent
(Sept. &
Oct. 2003)

Prepared Draft
EIS for 4 Public
Meetings (Dec.
2003 to Oct.
2013)

Circulated
Draft EIS; held
Public Hearing
(Feb. 18,
2015)

Future
Engineering and
Environmental
Studies

We Are
Here

Public Involvement Milestones





Project Needs

- System Linkage
- Expanded Capacity
- Safety
- Respond to Economic Development

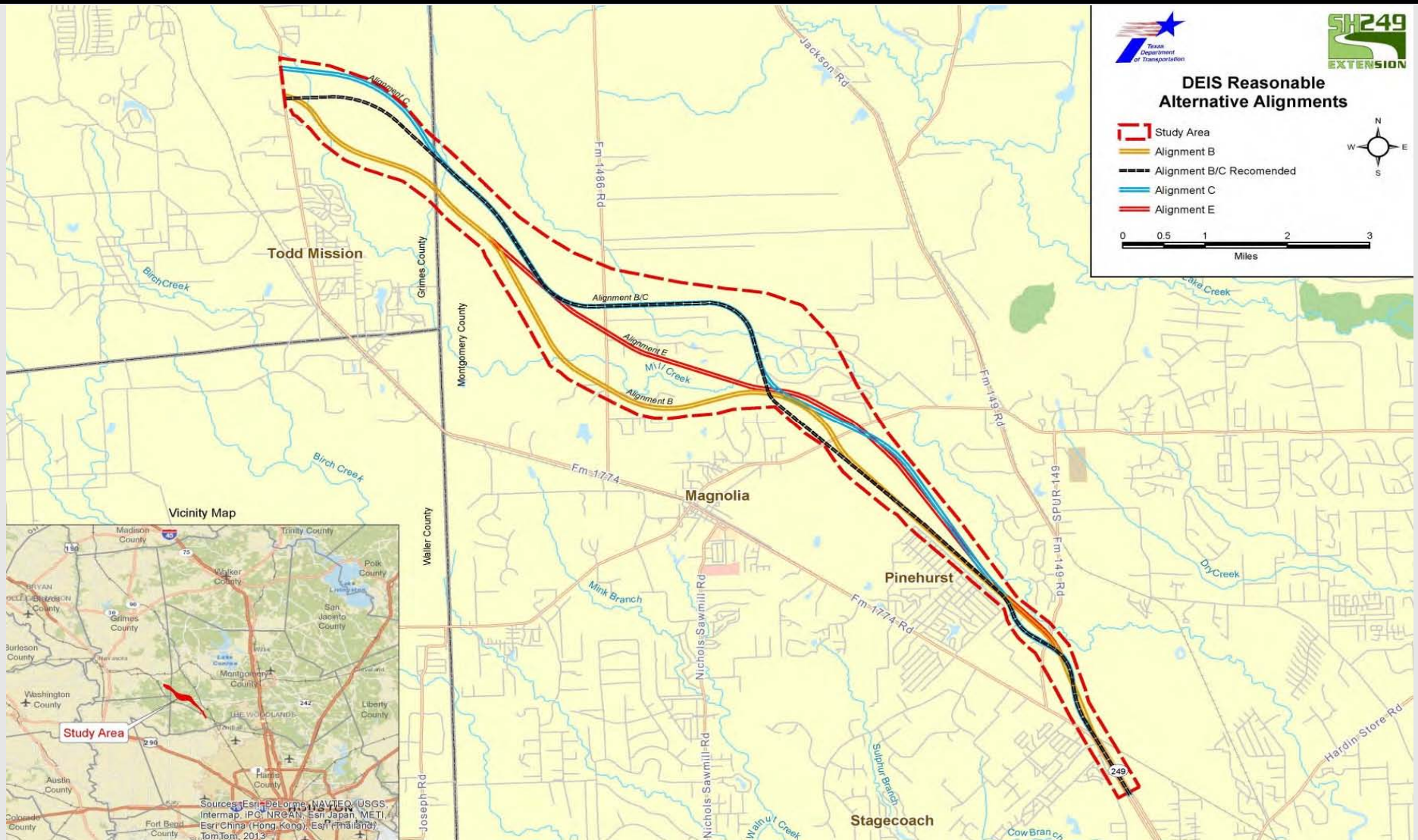
Project Purpose

The purpose of the proposed SH 249 Extension is to efficiently link the suburban communities and major roadways, enhance mobility and safety, and respond to population growth and residential development in the area.





TEXAS DEPARTMENT OF TRANSPORTATION

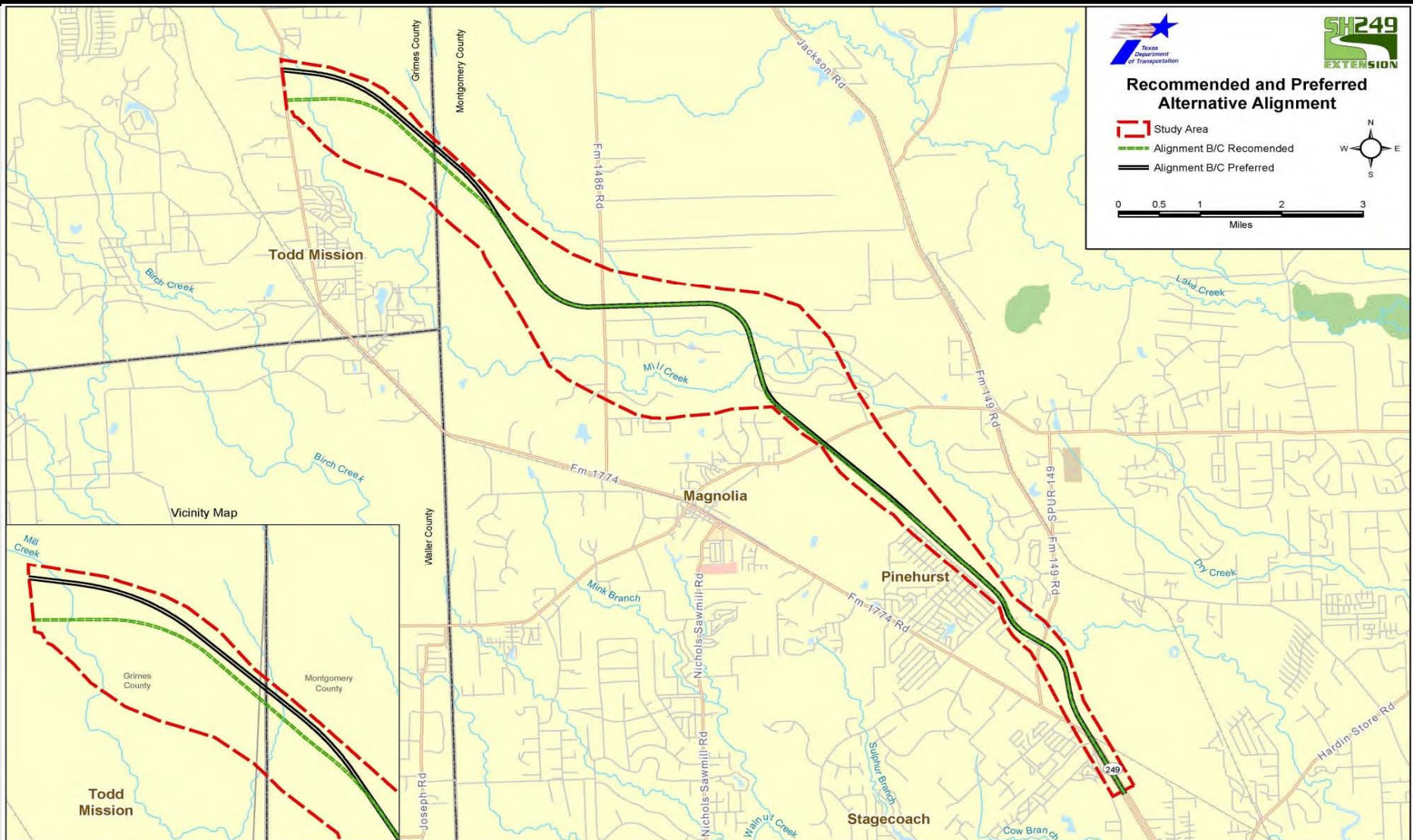


Reasonable Alternative Alignments





TEXAS DEPARTMENT OF TRANSPORTATION



Developing Alternative Alignment B/C





- Need and Purpose
- Alternative Analysis
- Existing Conditions
- Anticipated Impacts
- Public and Agency Coordination



TEXAS DEPARTMENT OF TRANSPORTATION

Criteria	Unit	Alignment B	Alignment B/C	Alignment C	Alignment E
Length of Proposed SH 249 Extension	Miles	15.3	15.0	15.3	14.2
Estimated Right-Of-Way Needed	Acres	741	727	741	688
Pipeline Crossings	Number of crossings	9	8	8	8
Potential Displacements/Relocations of Residences and Businesses	Number of displacements	26	7	7	18
Community Cohesion Impacts	High/ Medium/ Low	Medium	Low	Low	High
Wetland Impacts (National Wetland Inventory)	Acres	11.0	5.0	2.8	11.5
Floodplain Crossings	Linear feet	18,259	9,001	10,965	12,695
Stream Crossing	Number of crossings	27	21	22	19
Vegetation	Acres	711	724	730	691
Proposed Noise Barrier	Proposed number of barriers	0	1	0	0
Previous Public Involvement Support	High/ Medium/ Low	Low	High	Medium	Medium

Environmental Considerations





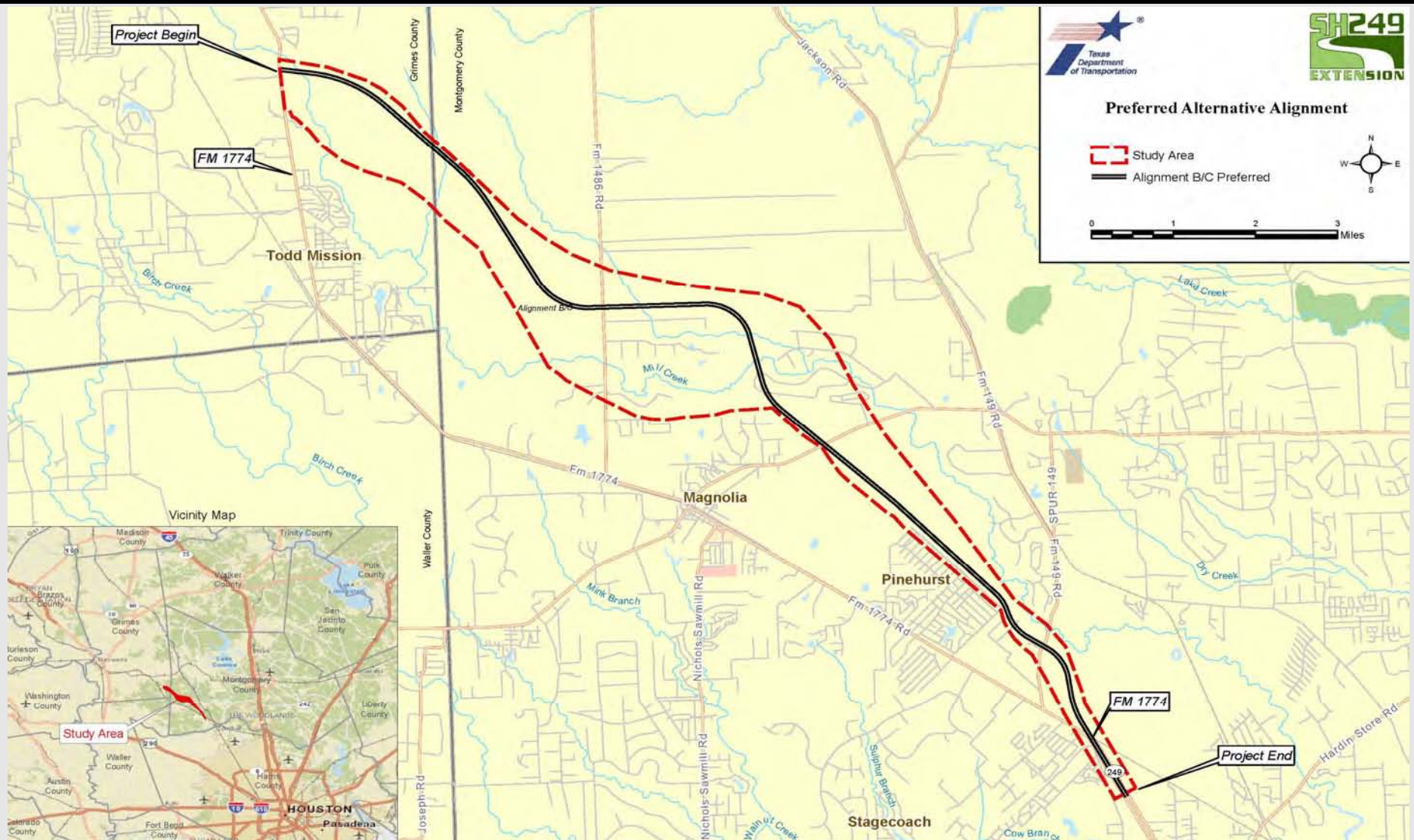
- Land Use
- Geology, Farmlands, and Soils
- Social and Economic
- Pedestrian and Bicycle
- Air Quality
- Water Quality and Permits
- Wildlife
- Threatened and Endangered Species
- Archeological Resources
- Historical Non-Archeological Properties
- Hazardous Materials
- Indirect and Cumulative Effects



- National Marine Fisheries Service
- U.S. Army Corps of Engineers
- U.S. Department of the Interior
- U.S. Environmental Protection Agency Region 6
- U.S. Fish & Wildlife Service
- Texas Commission on Environmental Quality
- Texas Parks & Wildlife Department
- Texas Historical Commission
- Houston-Galveston Area Council
- Montgomery and Grimes Counties
- Cities of: Pinehurst, Magnolia, and Todd Mission
- Magnolia Area Chamber of Commerce
- Magnolia Independent School District



TEXAS DEPARTMENT OF TRANSPORTATION



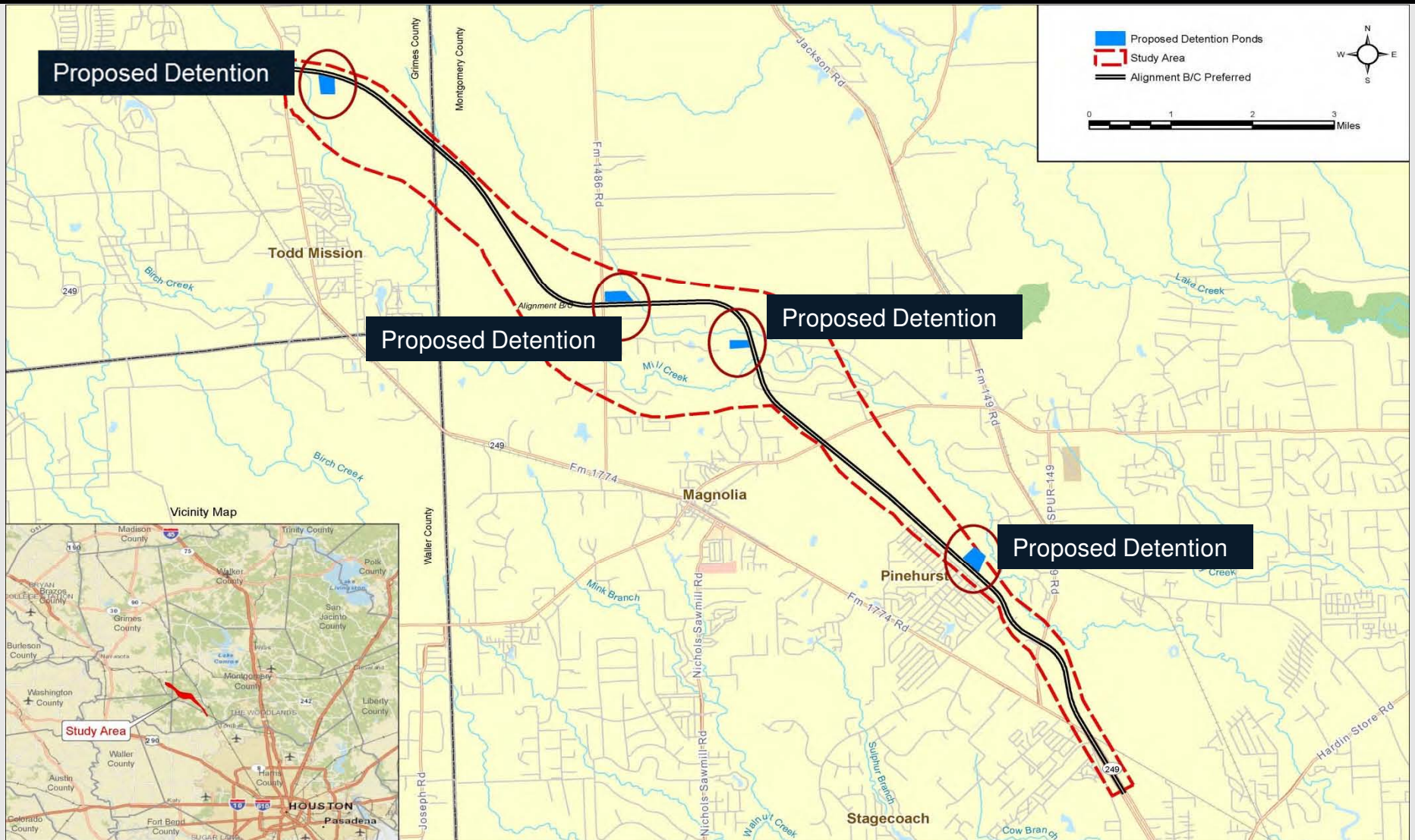
Preferred Alternative







TEXAS DEPARTMENT OF TRANSPORTATION

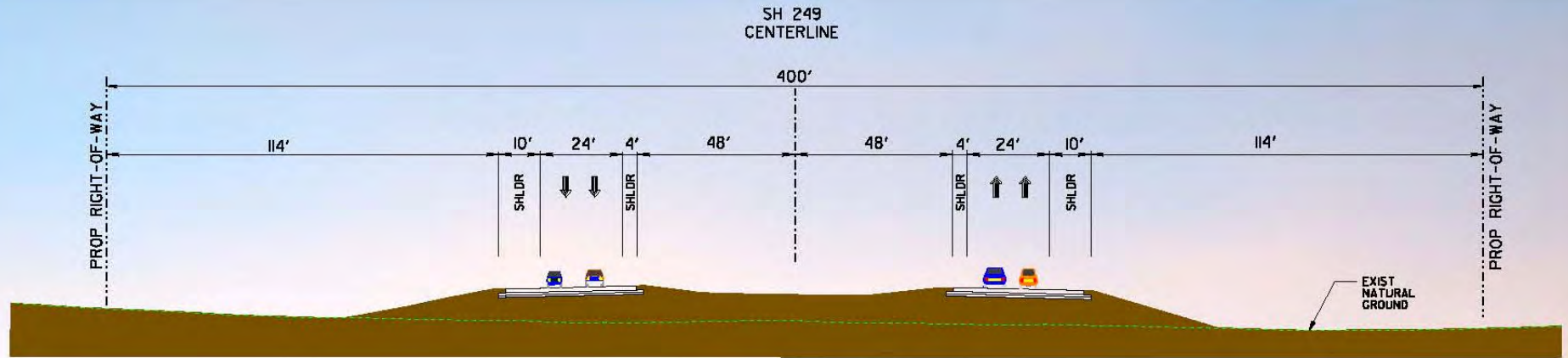


Preferred Alternative Detention Facilities

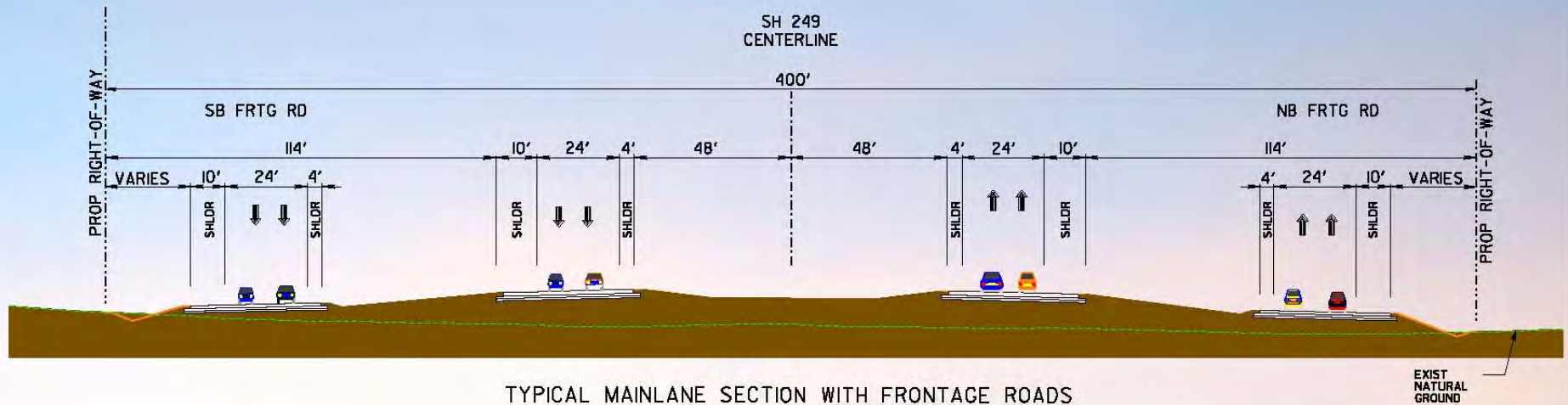




TEXAS DEPARTMENT OF TRANSPORTATION



TYPICAL MAINLANE SECTION



TYPICAL MAINLANE SECTION WITH FRONTAGE ROADS

Proposed Typical Sections





- TxDOT Houston District Office – Houston
- TxDOT Montgomery Area Office – Conroe
- TxDOT Bryan District Office – Bryan
- Malcolm Purvis Library – Magnolia
- Tomball Community Library/Lone Starr College – Tomball
- Navasota Public Library – Navasota
- Montgomery County Central Branch Library – Conroe

SH 249 Extension website:

<https://www.txdot.gov/inside-txdot/projects/studies/houston/sh249-extension.html>



- Consider public hearing comments
- Develop Selected Alternative per comments
- Finalize environmental analysis
- Project decision from TxDOT for the Final EIS/Record of Decision
- Develop final schematic design
- Anticipated construction activities to begin between late 2016 and early 2017
- Anticipated construction duration: 2 years



Oral Comments

- Complete a speaker card to speak during the Public Hearing, or
- Give comments privately to the court reporter in the common area

Written Comments

- Submit/Postmark by March 9, 2015
- Email by March 9, 2015 to: HOU-PIOWebMail@txdot.gov
- Website at <https://www.txdot.gov/inside-txdot/projects/studies/houston/sh249-extension.html>



TEXAS DEPARTMENT OF TRANSPORTATION

Elected Officials Comment Session





TEXAS DEPARTMENT OF TRANSPORTATION

Public Comment Session





- Submit Speaker Registration Card
- Limited to 3 minutes
- Use microphone and face court reporter
- State your name and whom you represent (if applicable)
- Unused time may not be given to another speaker

Q = Q1



TEXAS DEPARTMENT OF TRANSPORTATION

Thank You

