

PORT of PORT MANSFIELD

Willacy County Navigation District

Ronald Mills, Executive Port Director

www.portofportmansfield.com

The 1,700-acre Port of Port Mansfield was established in 1948 and has a shallow draft channel with a federally authorized depth of 17 feet. The port serves a popular fishing community for recreational and commercial use and also operates a general aviation airport. The port is located in Willacy County, and Raymondville, with a population of just under 11,000, is the closest city to the port. Future commercial use for the port is currently being explored for services such as handling project cargoes, container-on-barge, oil and gas, and construction materials.

Port Priorities & Opportunities

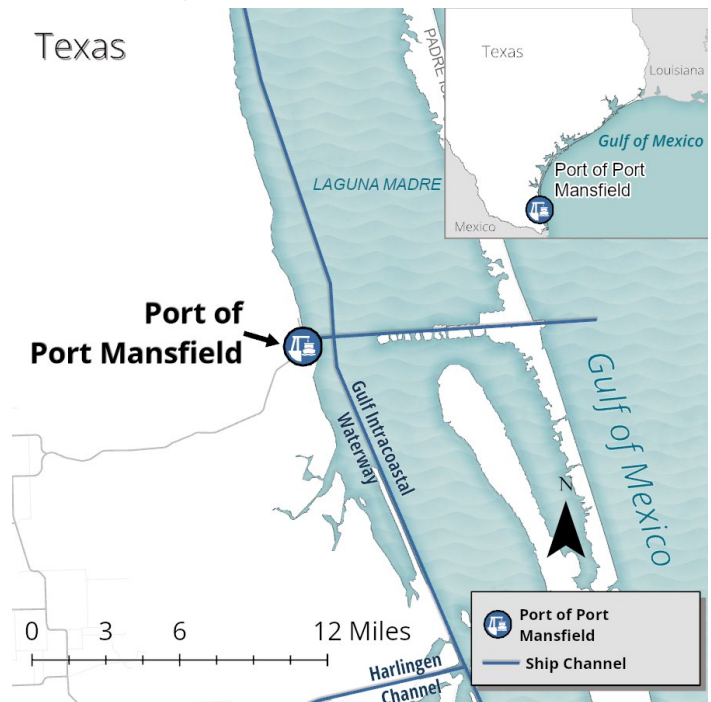
The Port of Port Mansfield is rapidly expanding to cater to burgeoning Mexican markets, with a significant shift towards containerized traffic and expectations of handling 500 trucks weekly. Infrastructure developments, such as the recent completion of a queuing yard and plans for new ones, address the increased demand. However, the port faces inland connectivity issues, necessitating a bypass road and heavier-duty corridors. The port is also progressing with a crucial airport runway extension to better support cargo movement.

The port is also gearing up its maritime infrastructure with two aggregate yard developments to enhance cargo handling, which are ready for immediate implementation and estimated to cost \$4.5 and \$6.5 million, respectively. Concurrently, the maintenance dredging of the ship channel is a pressing issue, with a need for U.S. Army Corps of Engineers funding to maintain navigability, a top priority for the regional environmental and economic health.

Port Projects

Project Name	Project Type	Total Project Cost
Airport Runway Extension	Maritime Infrastructure	\$12.0 Million

Cost provided by port/navigation district



INTERMODALITY

ROAD

- Highway access to I-69/US 77 and SH 186

BARGE

- 1-mile sailing distance to GIWW (M-10, M-69)

AIR

- Close proximity to Charles R. Johnson Airport, a port-managed airport

SHIP CHANNEL

Ship Channel Name: Port Mansfield Channel

Current Depth: 17 ft

Authorized Depth: 17 ft

