



TxDOT 2025 Transportation Alternatives Program

Program Overview Presentation

2025 Workshop



1

Virtual workshop logistics

	<p>Audience members' audio will be muted and videos will not be turned on.</p>
	<p>Open the Q&A panel and click “Ask a question”. TxDOT panelists will attempt to either type or verbally respond to everyone's questions.</p>
	<p>Use the up arrow to upvote questions in the Q&A panel for those which you would most like answers.</p>

Notes:

- Workshop will be recorded and posted on TxDOT's TA website.
- Slides will be posted on TxDOT's TA website.

2

2

TxDOT's Transportation Alternatives Program Team



Noah Heath, AICP
 Transportation Alternatives (TA)
 Program Manager
bikeped@txdot.gov



Arnold Vowles
 Transportation Planner
bikeped@txdot.gov



Matthew Volkmann, PE
 Bicycle and Pedestrian Engineer
bikeped@txdot.gov



Christine Tremblay
 Transportation Funding Specialist
bikeped@txdot.gov



Carl Seifert, AICP
 Active Transportation Planner
bikeped@txdot.gov

3

3

Workshop Agenda

TxDOT's 2025 TA Call for Projects Overview

- Funding program overview
- Application process

Local Government Project Procedures

- Federal and state requirements
- Professional services
- Construction

Best Practices for Detailed Applications

- Design details
- Maps, exhibits, and photographs
- Planning and public support
- Budget considerations
- Project Readiness

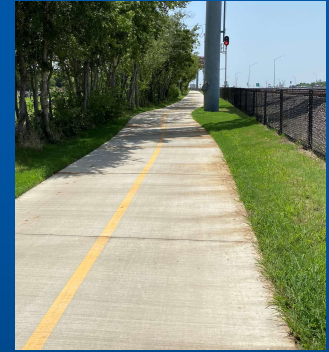
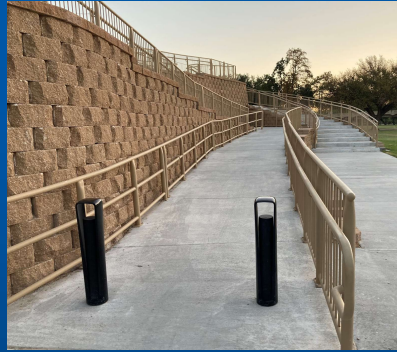
4

4



TxDOT's FY 2025 TA Call for Projects

Overview Presentation



5



Connecting you with Texas.

Presentation Agenda

- 1 Funding Opportunity
- 2 Program Call Project Categories
- 3 Program Call Fundamentals
- 4 Local Match Requirements
- 5 What's new for 2025
- 6 Two-step application process
- 7 Technical assistance
- 8 Questions?

6

6



Funding opportunity

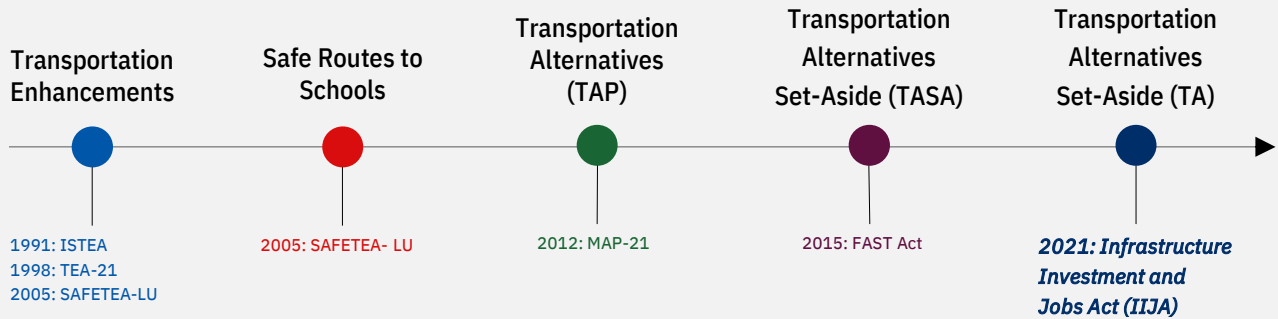


7



Connecting you with Texas.

Timeline



8

8

TA Program Rules

Federal guidelines

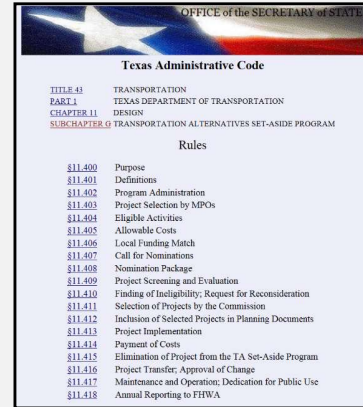
- 23 U.S.C. §133(h)
- FHWA guidance



https://www.fhwa.dot.gov/environment/transportation_alternatives/guidance/ta_guidance_2022.pdf

State guidelines

- 43 TAC §§11.400 - 11.418 and §§16.153 - 16.154
- TA Program Guide
- Focused on TxDOT administered TA funds



MPO guidelines

- Federal guidance requires MPOs designated as a TMA to conduct a competitive Call for Projects
- 43 TAC §11.403 Project Selection by MPOs
- Each MPO establishes its own TA program rules

Planning for TxDOT's 2025 Call for Projects Funding

TxDOT funds:

Population Area	Anticipated Funding Allocation
Nonurban (<5,000)	\$43.5 M
Small urban (5,000 to 49,999)	\$19.2 M
Medium urban (50,000 to 200,000)	\$20.2 M
Any Area	\$167.1 M
Total	\$250 M

**TxDOT 2025 TA Call for Projects
~\$250M to be made available
(FY27 – FY29 funds)**





Program Call Fundamentals



11



Connecting you with Texas.

TxDOT's TA Program Focus Areas

Project sponsors are strongly encouraged to submit projects that:

- Integrate and improve access to **public transportation** by investing in bicycling, wheelchair, and walking access. Specifically, projects that integrate **multiple modes of transportation** such as transit stops, carsharing, bikesharing, micromobility, or other shared-mobility services.
- Improve safety, access, or mobility for people of **all ages and abilities** engaged in active transportation, especially on-system improvements (within TxDOT right-of-way) in support of TxDOT's **Americans with Disabilities Act (ADA) Transition Plan**, TxDOT's Pedestrian Safety Action Plan, and other bicycle or pedestrian safety initiatives.
- Enhance bicycle and pedestrian access and safety to **school-related destinations enabling and encouraging** children, including those with disabilities, to walk and bicycle to school activities.
- Construct segments identified as part of **Texas Bicycle Tourism Trails** network or implement a locally-preferred alternate route.

12

12

Program Eligibility

	Community-Based	Large-Scale	Network Enhancements	Non-Infrastructure
Where?	<ul style="list-style-type: none"> • Outside of TMA & <200k <u>or</u> • Inside of TMA & <=50k in population* 	Anywhere in Texas		
Who?	<ul style="list-style-type: none"> • Local governments • School districts 	<ul style="list-style-type: none"> • Transit agencies • Small MPOs (<200k) 	<ul style="list-style-type: none"> • TxDOT at the request of a sponsor • Others (see Program Guide) 	
What?	Preliminary engineering** & construction for bicycle and pedestrian infrastructure	Projects with limited construction elements to enhance bike/ped infrastructure with limited or no design and no ROW acquisition		Non-motorized planning documents

* Entities within TMAs with populations below 50,000 are now eligible for Community Based
 ** For projects with less than 30% final design complete

Who?

Eligible Project Sponsors for TxDOT TA Call for Projects

- Local governments
- Regional transportation authorities
- Transit agencies
- Natural resource or public land agencies
- School districts, local education agencies, or schools
- Tribal governments
- Metropolitan Planning Organization (MPO) that serves an area with a population of 200,000 or less
- Nonprofit
- Other governmental entity responsible for oversight of transportation or recreational trails (other than an MPO that serves a population greater 200,000 or a state agency)
- A State (TxDOT), at the request of an entity listed above

Who?

Partnership Considerations

- Partnering with local governments (city, county, etc.)
 - Entities with limited federally funded construction experience
 - Entities without ROW ownership
 - Recommended for nonprofits, school districts, transit agencies
 - Required for unincorporated places (aka Census designated place (CDP))
- Partnering with transit agencies
 - Projects with transit nexus (within 1/2-mi for pedestrian/3-mi for bicycle)
 - May be appropriate for urban/metro transit agencies
 - Project components must be eligible under FTA program rules
- Partnering with TxDOT (at the request of an eligible entity)
 - Typically along on-system roadway or benefit to state highway system
 - State participation is at discretion of TxDOT District
- All projects are subject to same competitive evaluation process
- State can implement a project after award even if State was not a participant in application

15

15

What?

Eligible Phases of Work

- For TxDOT's TA funds, **federally reimbursable phases** include
 - Preliminary engineering, environmental documentation, construction, and construction-related activities (infrastructure projects)
 - Right-of-way acquisition on a case-by-case basis as approved by TxDOT. ROW acquisition must facilitate project execution within TA Program obligation requirements and be supported by affected property owners.
 - Planning activities (non-infrastructure projects)
 - TxDOT's direct state costs for oversight (all projects)
- The Detailed Application must include estimated costs for all activities for which the project sponsor is seeking reimbursement
- Reimbursable activities are limited to actual, documented costs incurred **after**:
 - Project award,
 - Advanced Funding Agreement (AFA),
 - Federal Project Authorization & Agreement (FPAA), and
 - TxDOT authorization to proceed

Federal and State requirements must be met for all activities with **federal participation**

16

What?

2025 TA Call for Projects: *Eligible Activities*

TA eligible activities:

Bicycle infrastructure improvements (e.g., bike lanes, separated bike lanes, bike signals)

Shared use paths

Sidewalk improvements

Infrastructure-related projects to improve safety for non-motorized transportation (e.g., safety lighting, crosswalks)

Construction of boulevards located in ROW of highways that improve bicycle, pedestrian, and transit user access (large scale only)

Construction or installation projects to enhance bicycle and pedestrian infrastructure requiring little or no design

Development of Active Transportation Planning Documents (e.g., bike plans, ADA transition plans, Vision Zero plans)

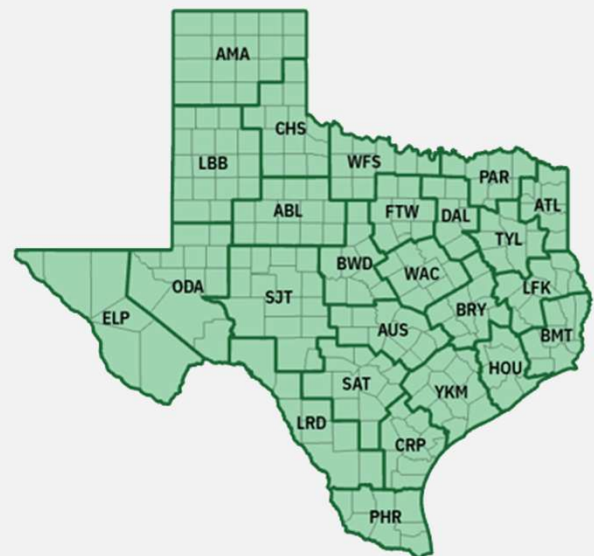
17

17

What?

Clarifications on program costs

- No reimbursement for PS&E activities for projects that are already advanced beyond 30% final design
 - *Advanced PS&E scores higher in project readiness criteria*
- **Clarification on eligible non-infrastructure activities**
 - An eligible planning study may include design activities up to 30% final design (*includes schematic, ROW mapping & coordination, environmental documentation, railroad coordination, utility identification and coordination, and 30% PS&E*).



18

18

What?

2025 TA Call for Projects: *Other Requirements*

Bicycle/pedestrian infrastructure must:


- Be principally for transportation rather than purely recreational
- Contribute to a safe, contiguous, accessible, integrated walking and/or bicycling network
- Benefit the general public

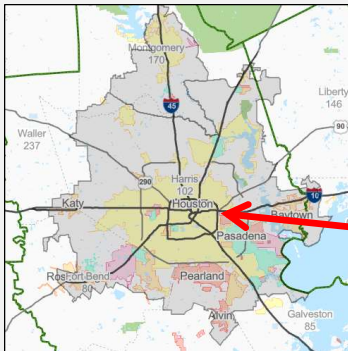
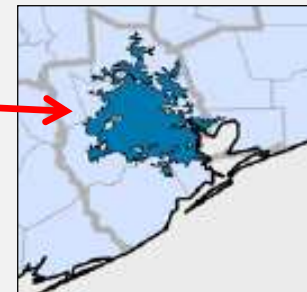
Examples:


- X A project located entirely within a school campus or park that is used for internal circulation only - **INELIGIBLE**
- ✓ A project along a greenbelt that is part of a long-distance bicycle/pedestrian network – **ELIGIBLE**
 - Circle Trail in Wichita Falls
 - Katy Trail in Denison
 - Northeast Texas Trail

Where?

TA and Transportation Management Areas (TMAs)/MPOs

 2020 U.S. Census Urbanized Area boundary with a population of 200,000 or greater. Referred to as a **Transportation Management Area (TMA)**.



 Together the MPO and state Department of Transportation (DOTs) refine the urbanized area boundaries based on logical characteristics with concurrence from FHWA. This results in the **smoothed boundary of the TMA**.

Where?

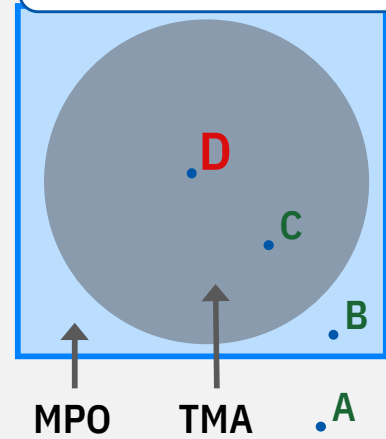
Community-Based Project Category

Eligible

- Projects located outside the MPO boundary are eligible (Project A)
- Projects located **outside** the TMA but **inside** MPO boundaries are eligible (Project B)
- Projects from project sponsors with populations **less than 50,000** located **within a TMA** are eligible (Project C)

Not Eligible

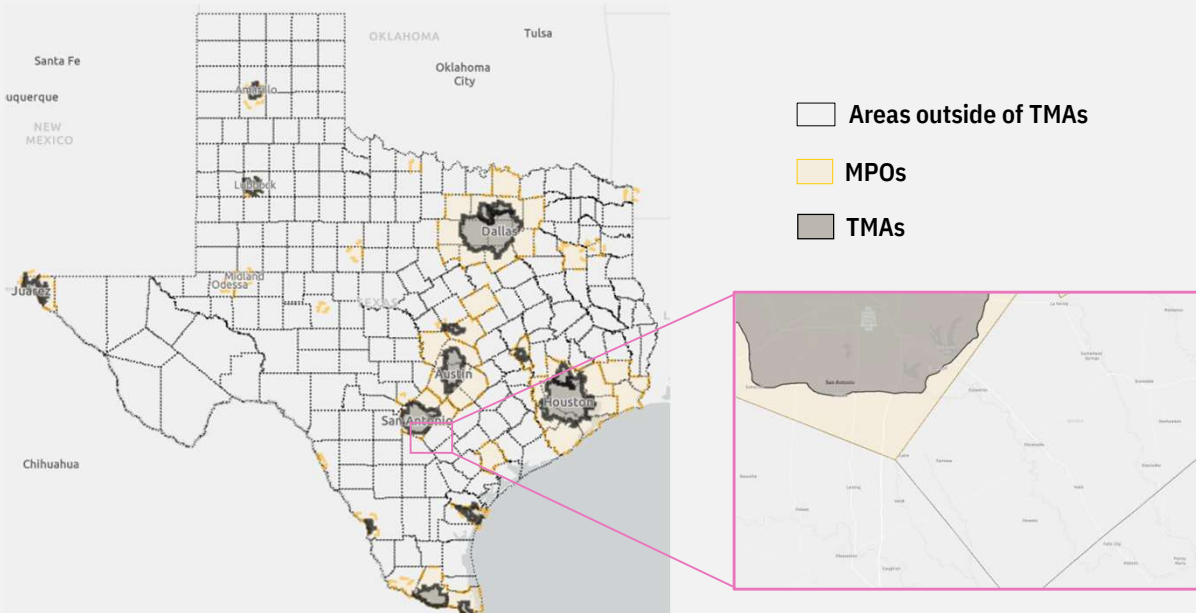
- Projects from project sponsors with populations **greater than 50,000** located **within a TMA** are **not** eligible for TxDOT's Community-Based Project Category (Project D)



The same project cannot be submitted to both TxDOT and the MPO for concurrent TA calls for projects.

Where?

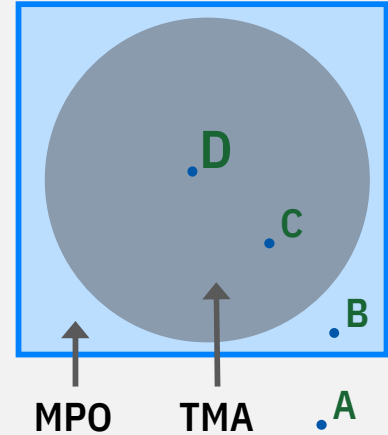
TA and Transportation Management Areas (TMAs)/ MPO



Where?

Large Scale, Network Enhancements, and Non-Infrastructure Project Categories

- Projects located in any area of the state, regardless of population size
 - Project A, B, C and D would be eligible.



The same project cannot be submitted to both TxDOT and the MPO for concurrent TA calls for projects.

Program eligibility changes

Community-Based	<ul style="list-style-type: none"> • Expansion of eligible project sponsors <ul style="list-style-type: none"> - Now includes communities of 50,000 or less <u>inside</u> TMAs
Large Scale	<ul style="list-style-type: none"> • No changes
Network Enhancements	<ul style="list-style-type: none"> • No changes
Non-infrastructure	<ul style="list-style-type: none"> • No changes

- Up to 2 applications per entity
- Maximum of one TA award per project sponsor per community



Project Categories

TxDOT 2025 TA Program

25



Connecting you with Texas.

TxDOT 2025 TA Call-for-Projects: Project Categories

Project Category	Eligible Activities	Eligible Entity	Local Match (without TDCs)	TDC eligibility**	Project Funding
Community-Based	Preliminary Engineering & Construction	<ul style="list-style-type: none"> Outside of TMA & <200k <u>or</u> Inside of TMA* & <50k in population 	20%	<input checked="" type="checkbox"/>	\$250,000 to \$5 million per project
Large Scale	Preliminary Engineering & Construction	Any Population Area	20%	<input checked="" type="checkbox"/>	\$5 to \$25 million per project
Network Enhancements	Projects with limited construction elements to enhance bike/ped infrastructure with limited or no design and no ROW acquisition			<input checked="" type="checkbox"/>	\$250,000 minimum for cities <200,000; \$1M min otherwise
Non-Infrastructure	Non-motorized planning documents (e.g., Pedestrian Safety Action Plans) & design activities up to 30% final design			<input checked="" type="checkbox"/>	\$100,000 minimum

* TMAs (Transportation Management Areas) have populations greater than 200,000 and are responsible for competitively awarding their own TA funding. **26**

** Availability of Transportation Development Credits is TBD

26

Project Category: Community Based



27

27

Community-Based

Eligible activities

- **Preliminary engineering and construction for**
 - Bicycle infrastructure improvements
 - Shared use paths
 - Sidewalk improvements
 - Infrastructure-related projects to improve safety for non-motorized transportation
- **Examples**
 - Bike lanes, sidewalks, or shared use paths between key destinations and existing facilities
 - Bike lanes, sidewalks, or shared use paths between schools and neighborhoods
 - Eliminating barriers, improving safety, filling in gaps in bike/ped network
 - Safety lighting for pedestrians/bicyclists

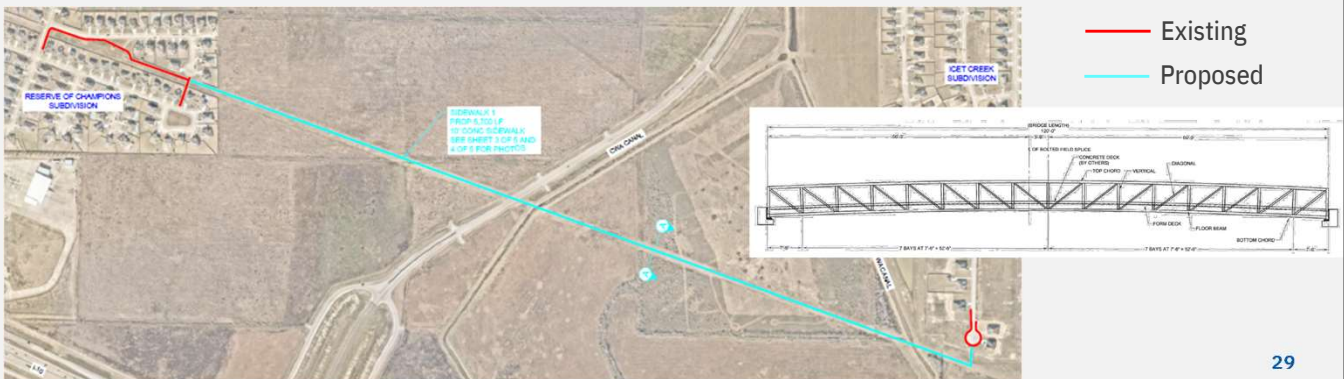
28

28

Examples of Community-Based projects, part 1

Filling bike/ped network gaps (City of Mont Belvieu)

- 10-foot wide Concrete Shared Use Path – 5,700 ft long, 6-inch thick SUP between subdivisions
- 2 Pedestrian bridges – Pre-fabricated



29

Examples of Community-Based projects, part 2

New Sidewalks/Shared use paths between schools and neighborhoods (City of Texarkana)

- 10-foot wide Concrete Shared Use Path – 4,200 ft long
- 6-foot wide Concrete Sidewalks – 1,000 ft long
- Crosswalks and Signage
- Pedestrian signal and push button
- Preliminary Engineering



30

Examples of a Community-Based project with **transit** nexus

Building new bus shelters with sidewalks (City of Abilene)

- Bus shelters – 5 new bus shelters and benches
- New sidewalks – 5,700 feet and 5-foot wide with 22 new curb ramps and guardrails
- Pedestrian signal upgrades – new signal improvements feature audible ped crossings.



31

31

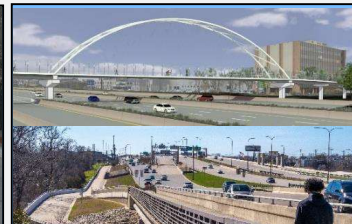
Project Category: Large Scale



Long distance active transportation routes



Shared use paths in rail or utility corridors



Active transportation connections to intermodal hubs



Comprehensive or area-wide accessibility improvements

Improvements that mitigate barriers to bicycling and walking

32

Photo credits: NETT Coalition, Alyson West, Jacobs Engineering, Austin American-Statesman, New York Times

32

Examples of Large Scale projects, part 2

Safely Connecting Schools and neighborhoods (El Paso County – Homestead Meadows)

- 12-foot wide Asphalt Shared Use Path – 2 mi long
- 5-foot wide Sidewalks – 1 mi long
- 39 new curb ramps
- Pedestrian scale lighting
- Bollards
- Preliminary Engineering



No ADA Accessibility

No Existing Sidewalks



Proposed New Sidewalk Location



35

Examples of Large Scale project with **transit** nexus

SUP connects Park & Ride to neighborhoods (City of Houston)

- Transit + Bike/Ped network connectivity – 3.3 miles of new SUPs connect Houston METRO’s busiest Park & Ride to trails and neighborhoods.
- Mitigates highway, bayou, and intersection barriers – SUP investments create multiple safe active transportation crossings (including I-10 and Grand Pkwy).



36

Project Category: Network Enhancements



Pedestrian and bicycle signal improvements



Bikeshare bikes and kiosk installations



Citywide bicycle parking installations



Citywide high visibility crosswalk installations



Converting bike lanes to separated bike lanes



Bicycle and pedestrian counters

Photo credits: Alyson West, Laura Sandt, Dan Burden, Toole Design Group

37

37

Network Enhancements

Eligible activities

- In any area of the state, regardless of population size
- Quick installation activities with limited construction elements
 - Support active transportation networks
 - Infrastructure projects with limited or no design and no ROW acquisition activities
 - Can begin implementation quickly after award (a year)
- Examples

<ul style="list-style-type: none"> - Traffic signal phasing improvements - Pedestrian signal head additions - Citywide bike/ped counters - Bike share kiosks and rolling stock installations - Bike parking installations 	<ul style="list-style-type: none"> - High visibility crosswalk installations - Separated bike lane upgrades (converting existing bike lanes into separated bike lanes) - ADA improvements - Mini roundabouts - Curb extensions
--	---

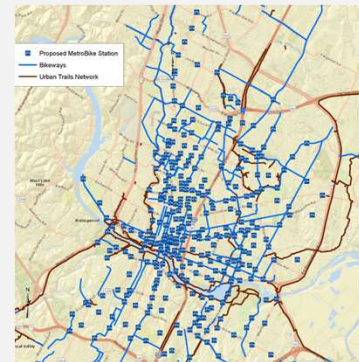
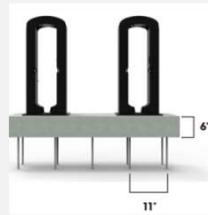
38

38

Examples of Network Enhancement projects, part 1

Bikeshare Expansion (City of Austin)

- Transit connectivity – bikeshare installations at bus and light rail stops for improved First mile/Last mile access
- Modular docks – battery operated, minimal resources to install, flexible and require less space
- eBike rolling stock investment
- Limited (or no) engineering design required



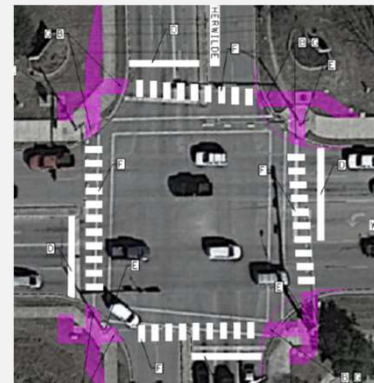
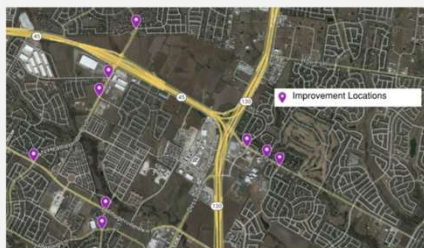
39

39

Examples of Network Enhancement projects, part 2

Intersection Improvements (City of Pflugerville)

- Pedestrian safety investments at 15 intersections.
 - Pedestrian signal heads, curb ramps, crosswalks, stop bars, illuminated street signs, pedestrian push buttons, etc.
- Limited (or no) engineering design required



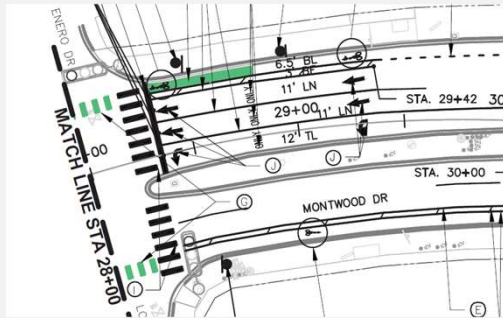
40

40

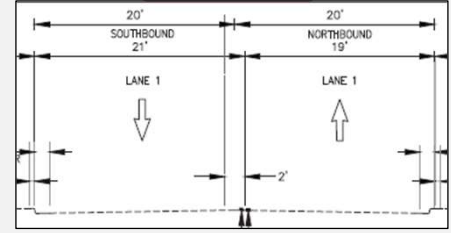
Examples of Network Enhancement projects, part 3

Bike Lane Upgrades (City of El Paso)

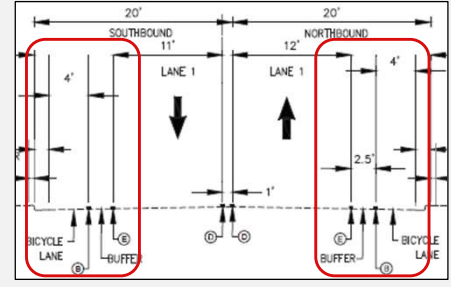
- Upgrading 4.3 mi of Wide Outside Lanes to Buffered Bike Lanes
- Engineering design 100% complete



Current



Proposed



Project Category: Non-infrastructure (Planning Documents)



Non-Infrastructure

Eligible activities

- In any area of the state, regardless of population size
- Planning documents to assist communities develop non-motorized transportation networks
- Includes design up to 30% final design as a component of planning activities (including ROW mapping & coordination, environmental documentation, railroad coordination, utility identification and coordination).
- **Examples**
 - Non-motorized transportation planning document
 - SRTS plan
 - Pedestrian plan
 - Bike plan
 - Safety action plan for pedestrians or bicyclists
 - Active transportation plan

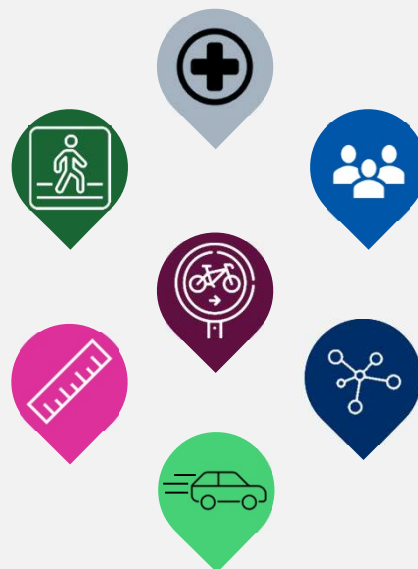
43

43

Examples of Non-Infrastructure projects, part 1

Active Transportation Plan (City of Kingsville)

- Includes:
 - Safety Action Plan
 - Hotspot Crash Analysis
 - Roadway Safety Audits
 - Speed management Plans
 - ADA Transition Plan
 - Systemic safety analysis of traffic control devices

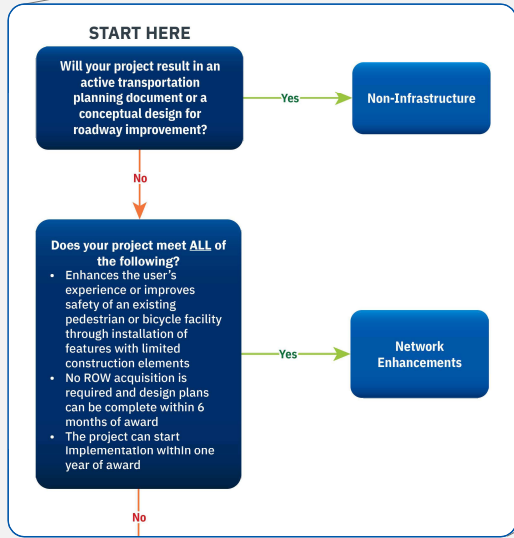


44

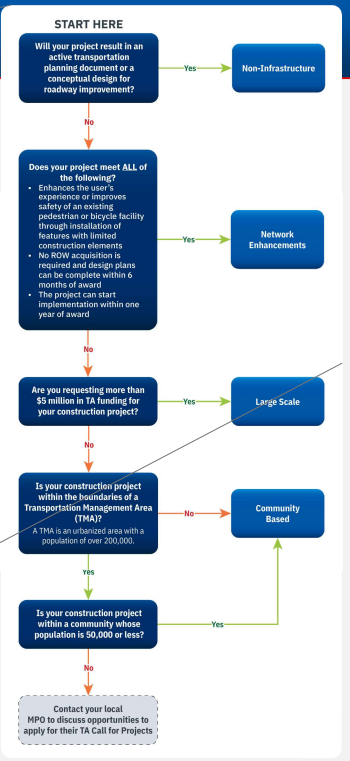
44



Decision Tree for determining project category



[Download here](#)



45



Local Match Options



46

Local Match for TA Funding

- Federal TA program requires 20% minimum local match for construction
- TxDOT offers flexibility in local match for construction:
 - Cash
 - Transportation Development Credits (TDCs)
 - Overmatch
- The 20% local match for TxDOT's administrative cost can be provided by project sponsors utilizing the local match options outlined above



47

47

Transportation Development Credits (TDCs) Eligibility

Project is eligible for TDCs if located in:

An **economically disadvantaged county**

Criteria for EDCP County :

- *Below average per capita taxable property value,*
- *Below average per capita income, and*
- *Above average unemployment, OR*
- *Met the standard criteria within the last six years and has been included in no less than five federally declared disasters within the same time period.*

OR

A **city or Census Designated Place (CPD)** that meet the **EDCP economic criteria** at the city or CPD level

Criteria for Project outside EDCP County - City or CPD Level:

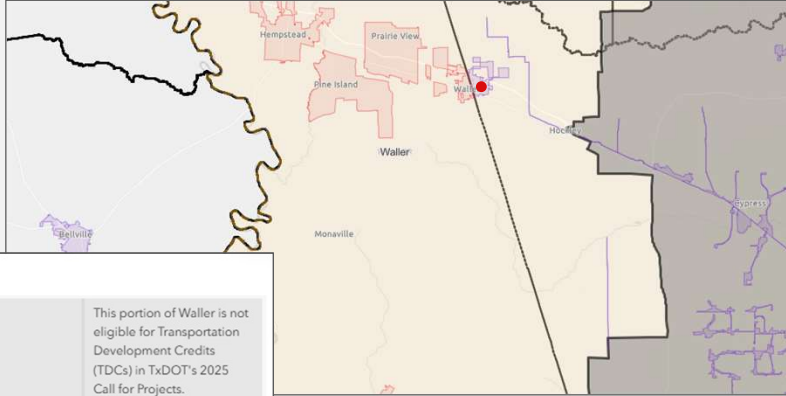
- *Below state average per capita taxable property value,*
- *Below state average per capita income, and*
- *Above state average unemployment*

Final eligibility list for TxDOT 2025 TA Call for Projects will be available when Call opens in January 2025.

48

48

Online Transportation Development Credits (TDCs) Map



TxDOT 2025 TA- TDC Eligibility by Cities and Places

- Yes
- No

Transportation Management Areas (TMAs)

- TMAs

Texas Metropolitan Planning Organizations

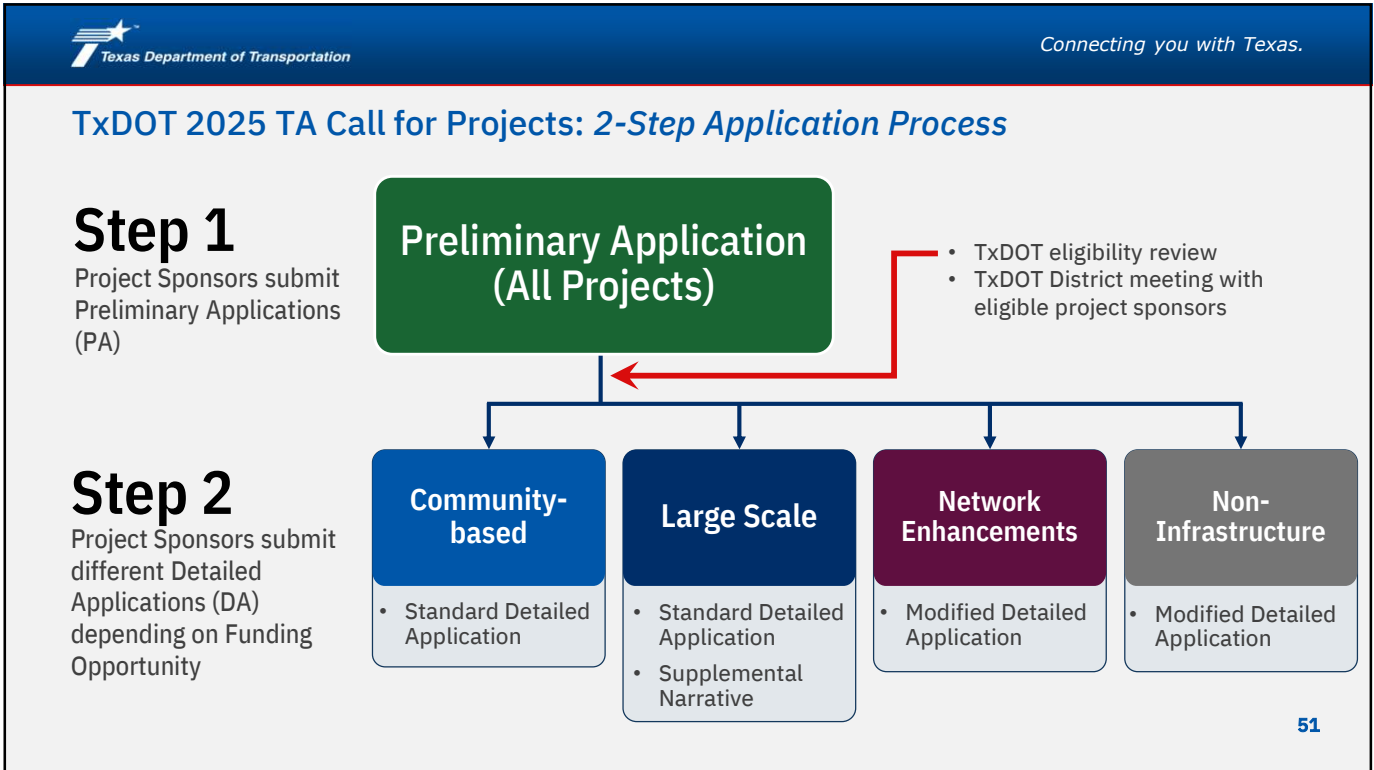
Waller	
TDC Eligibility	This portion of Waller is not eligible for Transportation Development Credits (TDCs) in TxDOT's 2025 Call for Projects.
Project Category Eligibility	This portion of Waller is outside of a Transportation Management Area (TMA). Projects located in this area are eligible for all project categories: Community Based, Large Scale, Network Enhancements, and Non-Infrastructure.

Online interactive TDC eligibility map for the 2025 TA Call for Projects!

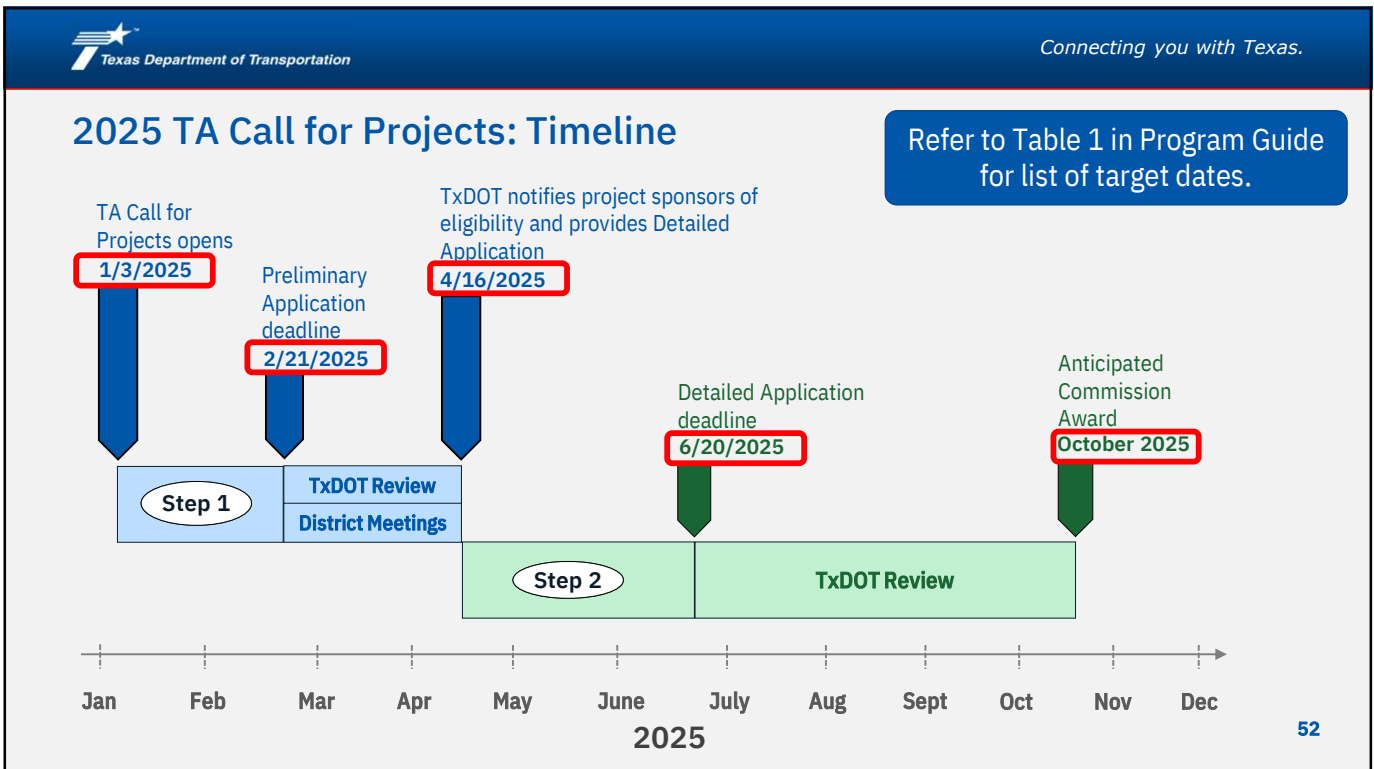


Two-step application process





51



52

MPO TA Call for Projects Schedules

- MPO's may also have Call for Projects that overlap with TxDOT's
 - NCTCOG, CAMPO, RGVMP
 - Different application process, rules, focus areas, scoring criteria
- TAC RULE §11.403(j) - Projects, or substantially similar projects, submitted during a program call administered by the MPO are not eligible for consideration under a concurrent program call administered by the department
- Important to understand the different TA funding opportunities
- Important to coordinate with MPO and TxDOT

53

53

STEP 1: Project sponsor submits preliminary application (PA)

PA is a fillable, PDF form which includes high-level project details:

- Project sponsors are limited to **two** applications
- Project sponsor information:
 - Contact information
 - Population area and location
- Project information:
 - Name, location, description
 - Project type/category
 - High-level cost estimates
 - Project complexity
- Available through TxDOT's TA Program website:

<https://www.txdot.gov/business/grants-and-funding/bicycle-pedestrian-local-federal-funding-programs.html>



2025 Transportation Alternatives (TA)
Call for Projects
Preliminary Application (PA)
Deadline to Submit PA: February 21, 2025

Project Sponsor

1. Contact Information
Local Government/Project Sponsor Name: _____
Contact Person: _____
Street Address: _____
Zip Code: _____ Office Phone Number: _____
Other partnering entities: _____

2. Identify population area (based on County sponsors a project location or Unincorporated Area population numbers)
Location Name: _____

3. Is the project...
 Yes No
 Yes No

4. select all types that apply. (See instructions for details.)
 Other bicycle, pedestrian, or micro-mobility infrastructure installations
 Boulevard improvements to enhance pedestrian, bicyclist and transit access
 Other _____

5. Project location
 On/along a TxDOT maintained roadway On/along a non-TxDOT roadway
 Not within the right-of-way of any roadway

6. Provide a Google map link: _____
See PA instructions for recommended tutorial links and minimum requirements.

Due: February 21, 2025

54

STEP 1: TxDOT District Review Meeting with Project Sponsor

Project sponsors are expected to meet with TxDOT District staff to review proposed projects to:

- Discuss TA program details with project sponsor
- Understand proposed project concept and complexities
- Discuss cost estimates
- Identify project readiness
- Discuss potential project sponsorship opportunities

District meeting deadline - 4/4/2025

Project sponsors should contact the District TA Coordinator to set up the District meeting if they have not been contacted by March 14, 2025.



55

55

STEP 1: TxDOT-PTN Completes Eligibility Review

After February 21st, TxDOT-PTN will review all submitted PAs to determine eligibility of:

- project sponsor,
- project location, and
- project activities

Timeframe:

All project sponsors will be notified of eligibility and (if appropriate) provided Detailed Applications on or around **April 16, 2025**.



A project that does not successfully complete Step 1 will not be evaluated in Step 2.

56

56

STEP 2: Project sponsor submits detailed application (DA)

All eligible projects move to Step 2.

DA will likely be an Excel-based form which collects comprehensive information about the proposed project. Topics include:

- Questions addressing evaluation criteria
- Typical sections, project layout, and maps
- Detailed construction budget
- Demonstration of project readiness
- **Resolution** indicating local support and commitment to implement project (if awarded funds)

Timeframe:

- Detailed Application for all eligible project sponsors due **6/20/25**

Additional program information can be found in TxDOT's 2021 TA Call for Projects Program Guide
<https://www.txdot.gov/inside-txdot/division/traffic/transportation/ta-call-for-projects.html>
 NOTE: All attachments must be submitted in letter-sized (8.5" x 11") format.

APPLICANT INFORMATION

1. Project Sponsor Name (Only one entry can act as project sponsor)

2. Jurisdiction Population (Based on 2010 US Census)

3. Type of Organization/Agency/Authority (Select from dropdown below) (select)

4. Project Sponsor Contact Information (Authorized representative)

Contact Person: Title: _____
 Mailing Address: _____ Physical Address: _____
 Mailing City: _____ Physical City: _____
 Zip Code: _____ Zip Code: _____
 Contact's Phone: _____ Entity's Main Phone: _____
 Email: _____ Web: _____

PROJECT DESCRIPTION

5. Project Name

6. Project Location Information

TxDOT District: _____ Texas County: _____
 Is the project located within a Metropolitan Planning Area (MPA) boundary? (select)
 Is the project located within a Metropolitan Planning Area (TMA)? (select)
 Project location: _____
 On or near _____ (ex. Main Street) _____ (ex. 1st Avenue)
 _____ (ex. 2nd Avenue)
 Project location map link: see Detailed Application Instructions for guidance.

If project involves multiple segments, please provide segment limits for the major segment in above blains. Additionally, please provide segment locations using the descriptive limits and beginning and ending stationing. See and label all segment locations as **A-Project Location Information** - No more than 2 pages.

Project location: _____ (select)

7. Project Description (See Detailed Application Instructions. Description must fit in the space provided.)

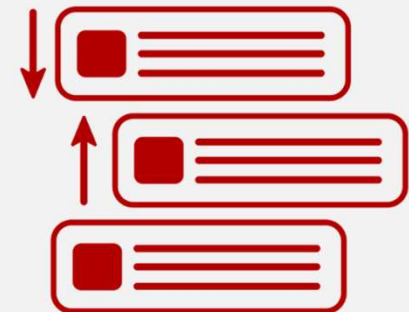
STEP 2: Project evaluation

Evaluation Process:

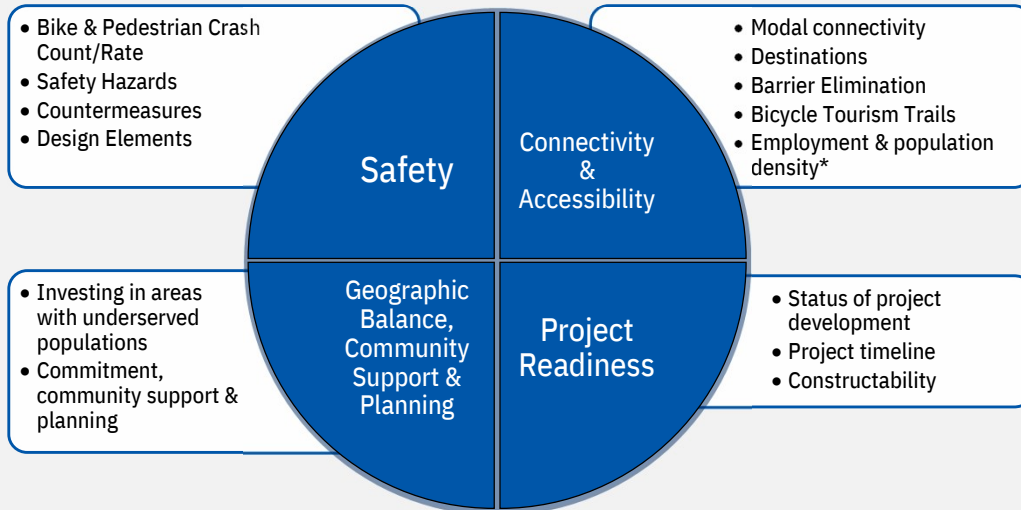
- Once submitted, each DA is scored based on evaluation criteria
- TxDOT District staff and Division subject matter experts evaluate overall feasibility/constructability

Target Milestones:

- **August 2025:** TxDOT completes project evaluation
- **October 2025:** Commission consideration for available funding



TxDOT TA evaluation criteria and category weights



*Employment & population density are not evaluated on nonurban or small urban projects.

TxDOT 2025 TA Call-for-Projects: Criteria Category Weights

Criteria Category	Criteria Category Weights			
	Community Based	Large Scale	Network Enhancements	Non-Infrastructure
Safety	25%	25%	20%	30%
Connectivity & Accessibility	25%	25%	20%	30%
Project Readiness	25%	25%	35%	-
Geographic Balance	15%	15%	15%	20%
Community Support & Planning	10%	10%	10%	20%
Total	100%	100%	100%	100%



Technical Assistance



61



Connecting you with Texas.

Technical Assistance Activities During Call for Projects

- Prioritizing smaller disadvantaged communities
- During application process:
 - Provide project sponsors feedback on project and budget before final detailed application is submitted
 - Each project sponsor meets with TxDOT district staff
 - May request use of engineering consultant to assist with application/project review



62

62

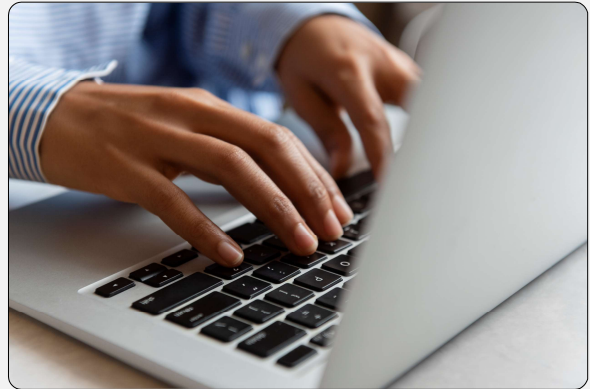
TxDOT-PTN TA Program Website

Available now:

- Program Guide
- Preliminary Application
- Preliminary Application Instructions
- Interactive map showing TMAs/TDCs

Check for future updates:

- Workshop presentations
- FAQs



63

63

Online TA technical assistance resources

- Unique Aspects of TxDOT's TA Program → [Video](#) and [Brochure](#)
- Decision tree for determining project category → [PDF](#)
- Construction cost estimate assistance tool → [PDF](#)
- Guidance for initiating railroad coordination → [PDF](#)
- Video tutorial for creating and sharing google map → [Video](#)
- Best practices video for creating maps for TxDOT's TA Program applications → [Video](#)
- General timeline for project initiation and development → [PDF](#)

All technical assistance resources can be found on TxDOT's TA website → [here](#)



64

Other Active Transportation resources on TxDOT's Website

Bicycle and Pedestrian planning resources

- Statewide Active Transportation Plan
- District Bike Plan Pilot
- Texas Pedestrian Safety Action Plan
- TxDOT's Strategic Direction Report for Bike&Ped Program
- Texas Bicycle Tourism Trails Study
- State of the Practice in Bicycle and Pedestrian Accommodation

Active Transportation Plan Inventory tool

- Map-based inventory of active transportation plans in Texas
- **Add** your city's plan today!

Bicycle and Pedestrian design resources

- TxDOT Bicycle Accommodation Design Guidance
- TxDOT Roadway Design Manual

TxDOT Bicycle and Pedestrian Count Program

- **Interactive map**
- Dashboard of bike and/or ped count location data
- Count resources (e.g., site selection and installation best practices, and training)

All of these resources can be found on TxDOT's Bike and Ped Resources website →



TxDOT 2025 TA Call for Projects: *Project Sponsor Workshops*

Workshop location	Date	Time	Registration
<i>Virtual</i>	Jan 6, 2024	1:00 – 4:00 PM	Registration Link
Tyler	Jan 10, 2024	1:00 – 4:00 PM	Please email Gary Rushing as a courtesy.
Arlington	Jan 14, 2024	9:00 AM – 12:00 PM	Please email Rachael Twiggs as a courtesy.
Lubbock	Jan 17, 2024	9:00 AM – 12:00 PM	Please email Logan Atwood as a courtesy.
Austin	Jan 21, 2024	9:00 AM – 12:00 PM	Please email Michelle Meaux as a courtesy.
Pharr (Rio Grande Valley)	Jan 23, 2024	9:00 AM – 12:00 PM	Please email Agustin Ramirez as a courtesy.
<i>Virtual</i>	Jan 24, 2024	9:00 AM – 12:00 PM	Registration Link

Thank you!

Contact us:
BikePed@txdot.gov

Contact your local District
TA coordinator



Local TxDOT District staff:

For more information



TxDOT's TA Website

67

67

HELP
#EndTheStreakTX

End the streak of daily deaths on Texas roadways.



TxDOT.gov (Keyword: #EndTheStreakTX)

#EndTheStreakTX Toolkit

68

68