

A banner featuring a blue cable with a central burst of golden, fiber-optic-like strands. The text "TxDOT ROW" is in white, "UTILITY WEEK" is in red on a white background, and "Partners in Coordination" is in white script.

TxDOT ROW

UTILITY WEEK

Partners in Coordination

Laredo District Digital Delivery Project

**Day 2 – December 3rd
Track Rm 1, Session 3
3:30PM – 4:15PM**

Table of contents

- 1 Introduction
- 2 Safety Minute
- 3 Project Information/Questions
- 4 Major Issues
- 5 Strategies/Techniques
- 6 File Types
- 7 Programs

Presenter: Kenneth Duncan



Kenneth is a Utility Coordinator with the Laredo District. He spent 8 years in the United States Marine Corps, is a Santa helper, and has been with TxDOT for 1 year. In his time at the Laredo District, with the help of his co-workers, he has changed the way the District views the Utility Coordinators section. He has focused on educating the internal/external customers all things Utilities and RULIS.

Did You Know...



billion young people aged 12-35 are at risk of hearing loss due to noise exposure in recreational settings.

50%



of people aged 12-35 listen to personal audio devices at unsafe volumes.

60%



of childhood hearing loss is due to preventable causes.

40%

of people aged 12-35 are exposed to damaging levels of sound at sporting events, nightclubs, and bars.

What Can You Do?



Turn Down the Volume



Walk Away from Loud Sounds



Less Time on Personal Devices



Protect Your Ears with Earplugs

NOISE-INDUCED HEARING LOSS (NIHL)



Noise-induced hearing loss (NIHL) is a type of hearing impairment that occurs when the inner ear is damaged by exposure to loud sounds. NIHL can be caused by a single exposure to a very loud sound, or by repeated exposure to loud sounds over time. The louder the sound, and the longer the exposure, the greater the risk of hearing loss.



Volume Down

Listen to personal audio devices at a volume level at 50 to 60% of maximum.



Balance

Volume level and length of listening need to be balanced. The longer you listen, the lower the volume should be.



Monitor

Use smartphone apps to monitor your sound exposure. Choose devices with built-in safe listening features.



Fit Matters

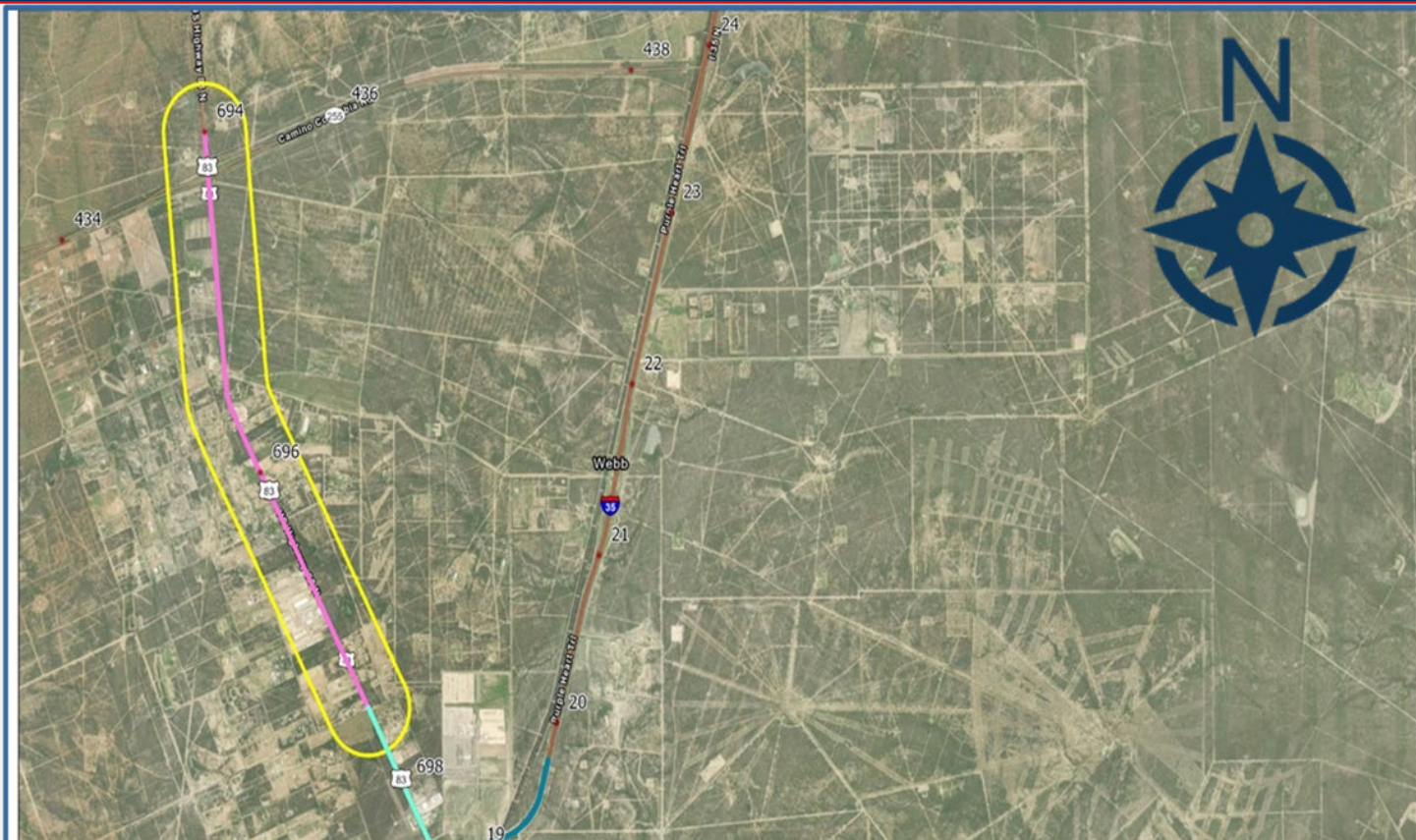
Use over-the-ear (and, if possible, noise-canceling) headphones. Over-the-ear models create a better seal to block out ambient sounds.



Hear the World

Take listening breaks, at least once an hour from personal audio devices. Enjoy the quiet and sounds around you!

Limits From: Los Botines
Limits to: SH-255



- What are the major issues?
- What strategies/techniques are we using?
- What types of files are we using?
- What programs are we using?



What are the Major Issues that we are running into?

The lack of accurate or complete data for utilities in that area has slowed the process, permit research, and utility owners not having a true As-Built for the facilities and the utility not having any information or not even replying to our calls. We can identify what utilities are in the area, via our 1 call, Railroad Commission, permits, and visual inspections. However, having little to no data is the problem.



What strategies/techniques are we using?

Same as any other project?

Utility Investigation Process

SUE Investigations

Conflict Matrix

Drone fly overs

Drone photogrammetry and 3D mapping This is the new techniques that are being used for the Digital Delivery.



What type of files are we using?



With this project we have requested and are using lots of different file types, such as mapping files, excel files for coordinate and survey data, and image files.



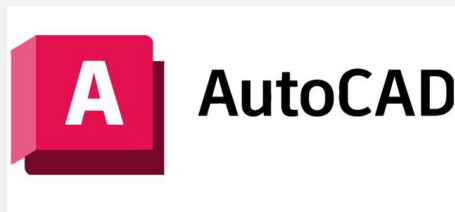
DGN, DWG, 3SM, OBJ, 3XM, CSV, XLSX, PDF, JPEG, TIFF, GLTF, and POD



April 18, 2025

What programs are we using?

- Openroads Designer
- LumenRT
- Concept Station
- Itwins Package
- 3D Viewer
- Auto Cad Software



Questions





Thank You!