

# TEXAS - MEXICO BORDER

Texas Border Facts  
March 2025



The Texas - Mexico Border is home to thirty-four border crossings and seven airports aggregated into twelve Land Ports of Entry (LPOE) across the three border regions - El Paso, Laredo and Rio Grande Valley.

## El Paso Region

Located in the westernmost part of Texas, the El Paso Region is home to four LPOEs—El Paso, Ysleta, Marcelino Serna, and Presidio. Within these LPOEs, there are six border crossings that accommodate both pedestrian and motorized vehicle traffic, five of which can process buses and four of which handle commercial vehicles.

Additionally, the region features one pedestrian-only crossing, one passenger vehicles-only crossing, two freight rail border crossings, and two airports.

## Laredo Region

Located on the South Texas plains, the Laredo Region is home to three LPOEs—Del Rio, Eagle Pass, and Laredo. Within these LPOEs, there are four border crossings that accommodate commercial vehicles, two rail crossings, and two airports. Passenger vehicles are processed at seven crossings, pedestrians at five, and buses at four.

More than six out of every ten commercial trucks crossing the Texas-Mexico border in 2024 passed through the Laredo Region.

## Rio Grande Valley Region

Located in the southernmost part of Texas, the Rio Grande Valley Region is home to five LPOEs—Roma, Rio Grande City, Hidalgo, Progreso, and Brownsville. Within these LPOEs, thirteen bridges serve passenger vehicles, ten serve pedestrians, eight can process buses, and six process commercial vehicles. Additionally, there is one rail crossing and three airports.

## Northbound 2024 Crossings



**34,896,618**  
Passenger  
Vehicles



**17,315,958**  
Pedestrians



**1,090,047**  
Railcars

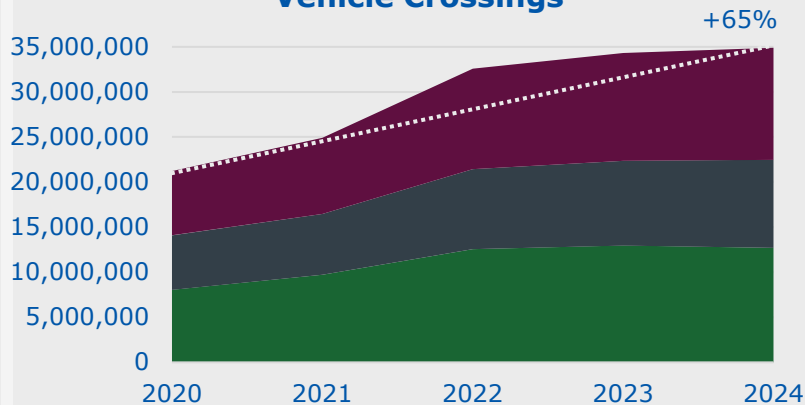


**5,366,231**  
Commercial  
Vehicles

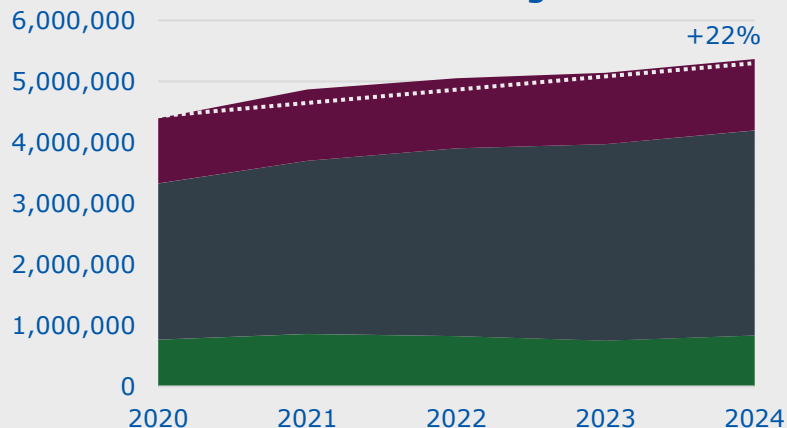


**72,731**  
Buses

## Trend in Northbound Passenger Vehicle Crossings



## Trend in Northbound Commercial Vehicle Crossings



El Paso



Laredo



Rio Grande  
Valley



In 2024, the U.S. traded \$839.9 billion in goods with Mexico, with exports totaling \$334.0 billion and imports reaching \$505.9 billion. The second-largest trade partner was Canada, with \$761.2 billion in goods traded with the U.S.



More than 70 percent (\$588.7 billion) was processed through Texas, 6.1 times more than what was processed through California, the second state in terms of trade with Mexico.

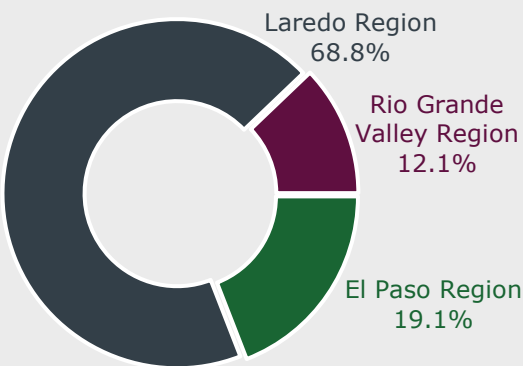


## Border Regions 2024 Trade Insights

In 2024, the **Border Regions** – El Paso, Laredo and Rio Grande Valley - traded \$553 billion; a 65.8 percent of the total U.S.- Mexico trade and a 93.9 percent of the total trade processed through the state of Texas.

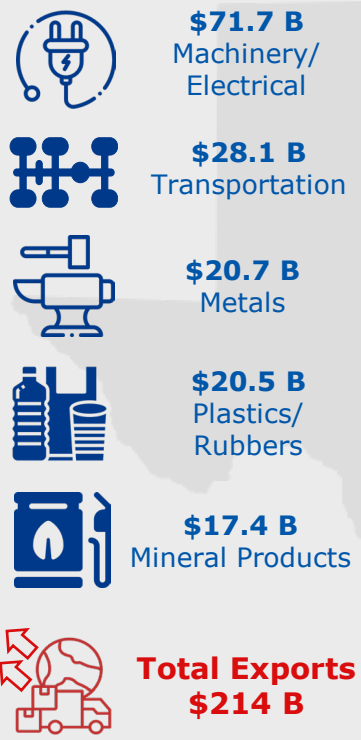
The **remaining trade** not processed through the Border Regions, approximately 6 percent, is primarily handled by non-land transportation modes, such as vessels and air. **Vessel trade** alone accounts for 5.7% of total U.S.-Mexico trade through Texas, totaling \$33.5 billion, of which \$24.6 billion was managed via the Port of Houston and the Houston-Galveston Customs District.

In 2024, the POEs in the border regions processed \$214 billion in exports and facilitated a total of \$339 billion in imports.

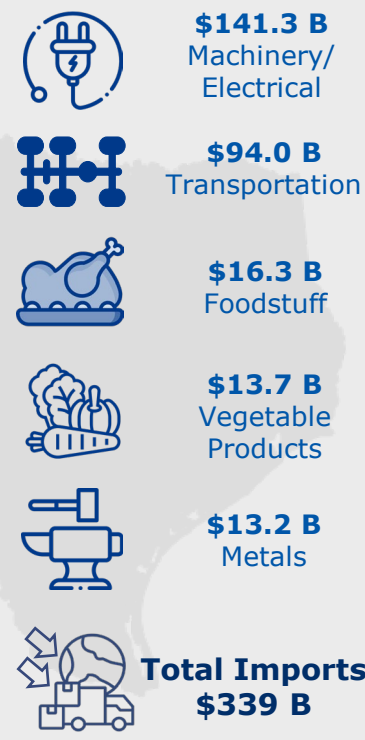


The Laredo Region processed \$380.3 million in trade, managing nearly 70 percent of trade across border regions and 65 percent of all trade processed through Texas. The El Paso Region processed \$105.6 billion, and the Rio Grande Valley recorded \$67.1 billion in cross-border trade.

### 2024 Top 5 EXPORTS



### 2024 Top 5 IMPORTS



### El Paso Region

In 2024, the El Paso Region processed trade dominated by **Machinery/Electrical**, accounting for 48.1% of exports (\$20.5B) and 61.6% of imports (\$38.8B) within this region.



### Laredo Region

In 2024, the Laredo Region recorded trade dominated by **Machinery/Electrical**, accounting for 30.0% of exports (\$43.2B) and 35.5% of imports (\$84.0B) within this region.



### Rio Grande Valley Region

In 2024, the Rio Grande Valley Region saw trade dominated by **Machinery/Electrical**, accounting for 28.6% of exports (\$7.9B) and 46.6% of imports (\$18.4B) within this region.

## 2024 Cross-Border Exports TOP 3 by Mode



**81.4%** of total exports transported by **Commercial Vehicles**

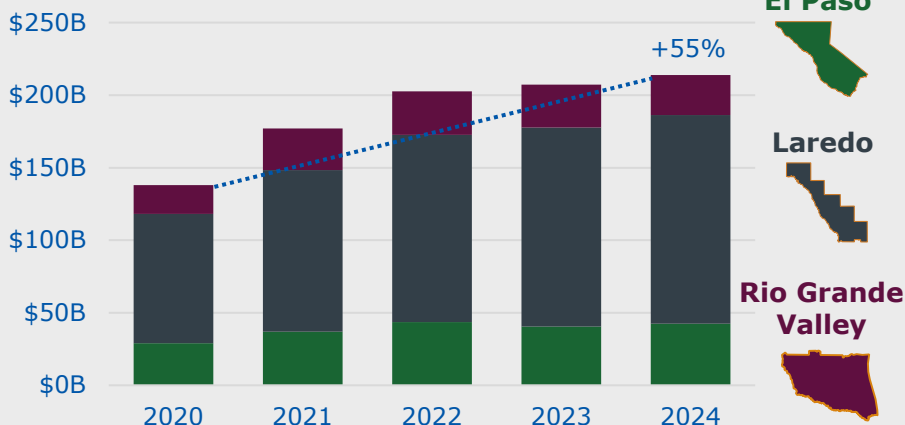


**14.9%** of total exports moved by **Rail**



**2.5%** of total exports transported by **Pipeline**

## Trend in the Value of U.S.-Mexico Exports Processed in the Border Regions



## 2024 Cross-Border Imports TOP 3 by Mode



**82.7%** of total imports transported by **Commercial Vehicles**

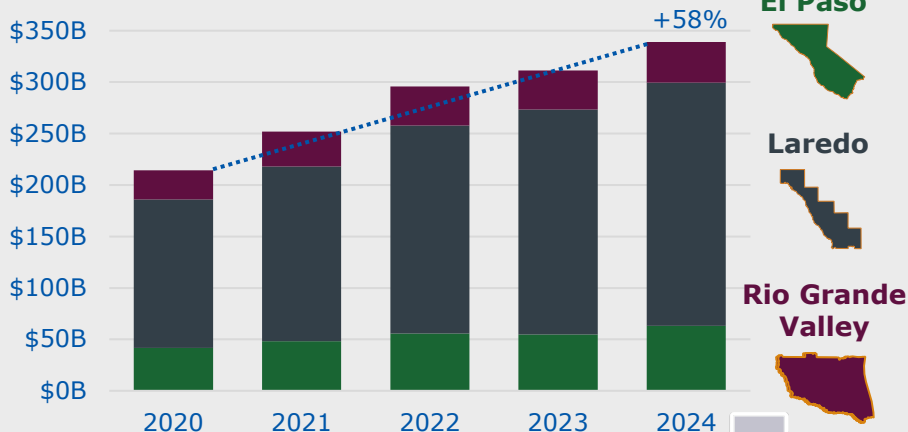


**16.8%** of total imports moved by **Rail**



**0.1%** of total imports transported by **Air**

## Trend in the Value of U.S.-Mexico Imports Processed in the Border Regions



## Border Regions Fast Facts



### El Paso



- The **Presidio-Ojinaga International Bridge** is the only non-rail international bridge owned by the State of Texas.
- The **Boquillas Crossing** is the only pedestrian-only crossing on the Texas-Mexico border.

### Laredo



- The **Del Rio International Bridge** is the longest international bridge in the Laredo Region at 2,035 feet (620 meters).
- The **World Trade Bridge** is the busiest commercial crossing on the U.S.-Mexico border.
- The **CPKC Laredo International Rail Bridge**, opened in February 2025, is the newest U.S.-Mexico rail crossing and adds a second line to the original 1920 bridge.

### Rio Grande Valley



- The **Anzalduas International Bridge** is the longest bridge in the Rio Grande Valley Region and along the entire U.S.-Mexico border, measuring 3.2 miles (5.1 kilometers).
- The **West Rail Bridge** is the first new rail border crossing built on the U.S.-Mexico border in over 100 years, officially opened in 2015.

All information regarding POEs can be found in the [Texas Mexico International Border Crossing Guide 2024](#).

Sources: Bureau of Transportation Statistics – [TransBorder Freight Data](#) and [Border Crossing Data](#) Portals.

