

NORTH HOUSTON HIGHWAY IMPROVEMENT PROJECT

Project Briefing Packet

RECOMMENDED ALTERNATIVES

Project divided into 3 Segments

- Segment 1 – Beltway 8 to I-610
- Segment 2 – I-610 to I-10
- Segment 3 – Downtown Loop System

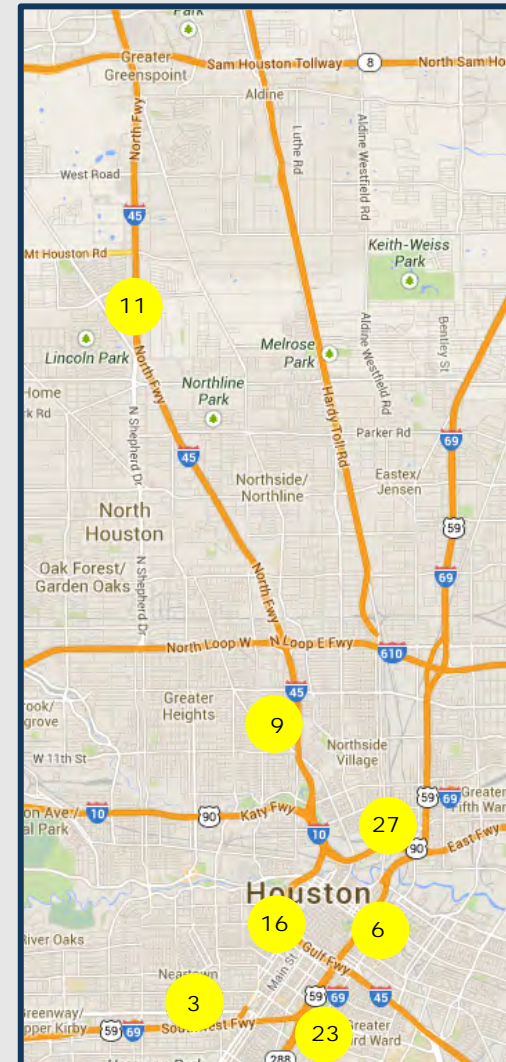
- One Proposed Recommended Alternative for each segment
- See exhibits in the open house area for maps, diagrams, and details



NEED FOR AND PURPOSE OF PROPOSED PROJECT

- Need for Proposed Project
 - Population and employment increases
 - Existing and future I-45 traffic
 - Current design standards and improved safety
 - Efficient traffic movement, including during evacuation events
- Purpose of Proposed Project
 - Manage congestion
 - Enhance safety
 - Improve mobility and operational efficiency

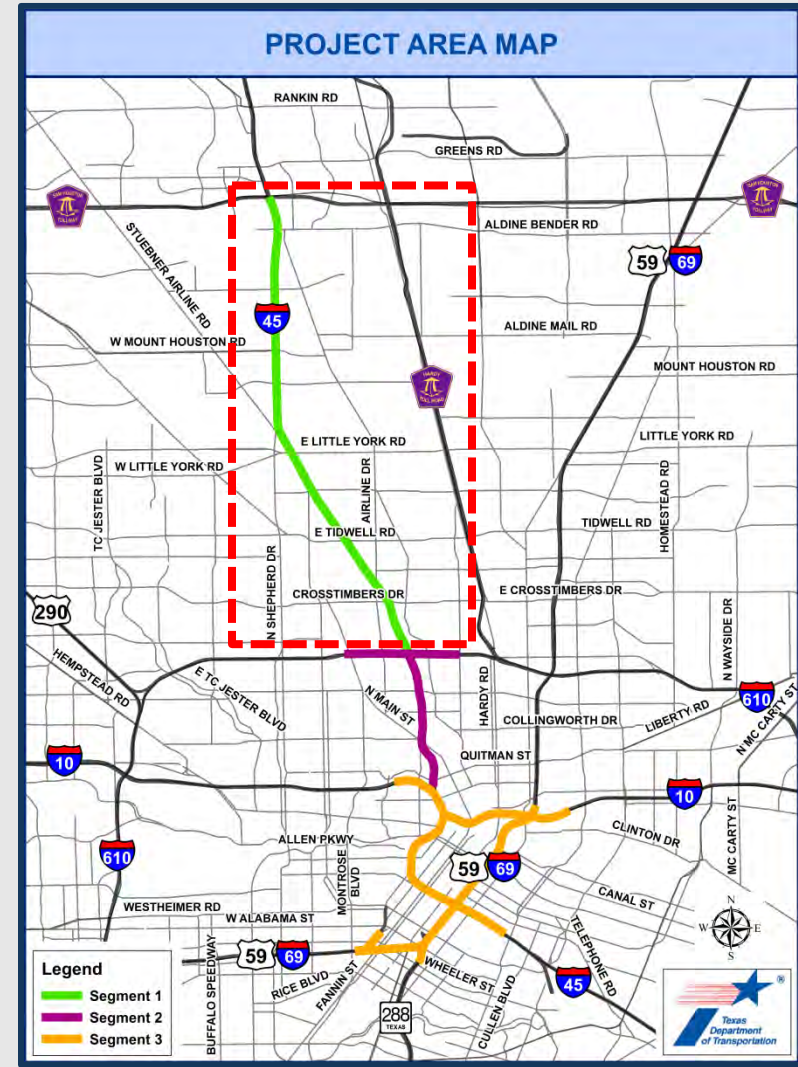
Top 100 Congested Roadway Segments



PROPOSED RECOMMENDED ALTERNATIVE: SEGMENT 1

■ Segment 1 Features

- New Roadway Capacity
 - Add four (4) managed lanes
 - Add one (1) frontage road lane in each direction
 - Add full-width shoulders
 - Add bike/pedestrian features along frontage roads
- Between Beltway 8 and Airline Drive
 - Right of way required on west side of I-45
- Between Airline Drive and I-610
 - Right of way required on east side of I-45



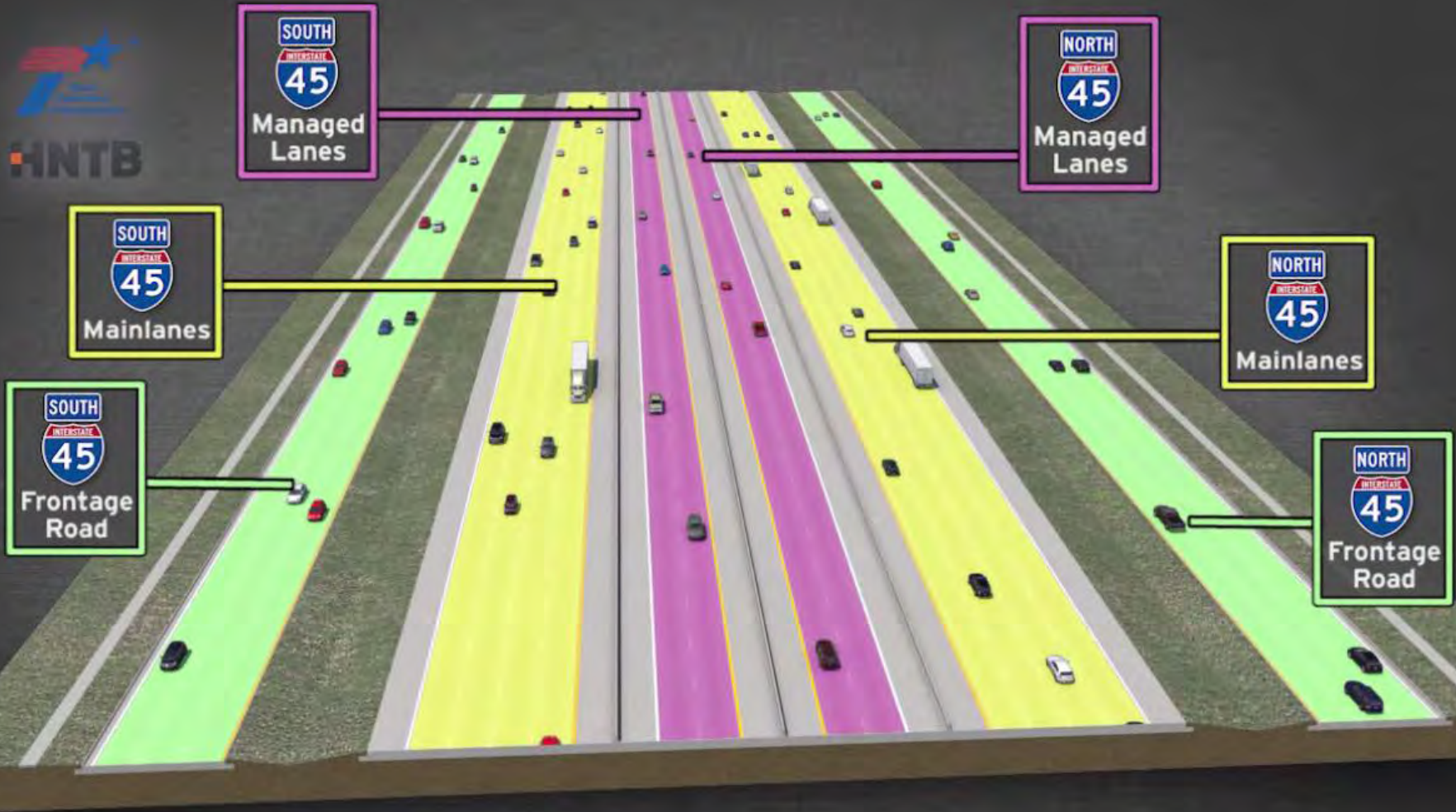
PROPOSED RECOMMENDED ALTERNATIVE: SEGMENT 1



Segment 1 - Beltway 8 To I-610

PRELIMINARY-SUBJECT TO CHANGE

PROPOSED RECOMMENDED ALTERNATIVE: SEGMENT 1

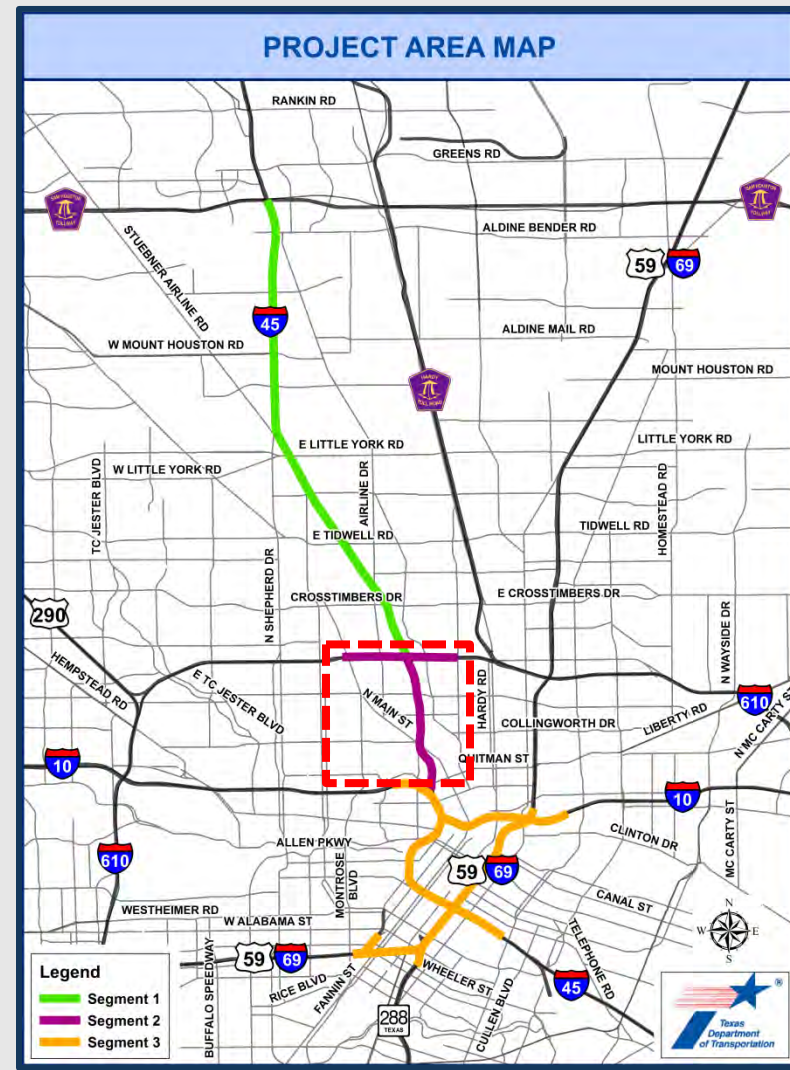


PRELIMINARY-SUBJECT TO CHANGE

PROPOSED RECOMMENDED ALTERNATIVE: SEGMENT 2

Segment 2 Features

- New Roadway Capacity
 - Add four (4) managed lanes
 - Add full-width shoulders
 - Add bike/pedestrian features along frontage roads
- Between I-610 and Cavalcade St.
 - Mainlanes are elevated
 - Frontage roads are at grade
 - Approx. 10 to 80 feet of additional right of way
- Between Cavalcade St. and Quitman St.
 - Mainlanes are depressed
 - Frontage roads are at grade
 - No new right of way required, except at intersections



PROPOSED RECOMMENDED ALTERNATIVE: SEGMENT 2

View of Proposed Improvements near North Main St.

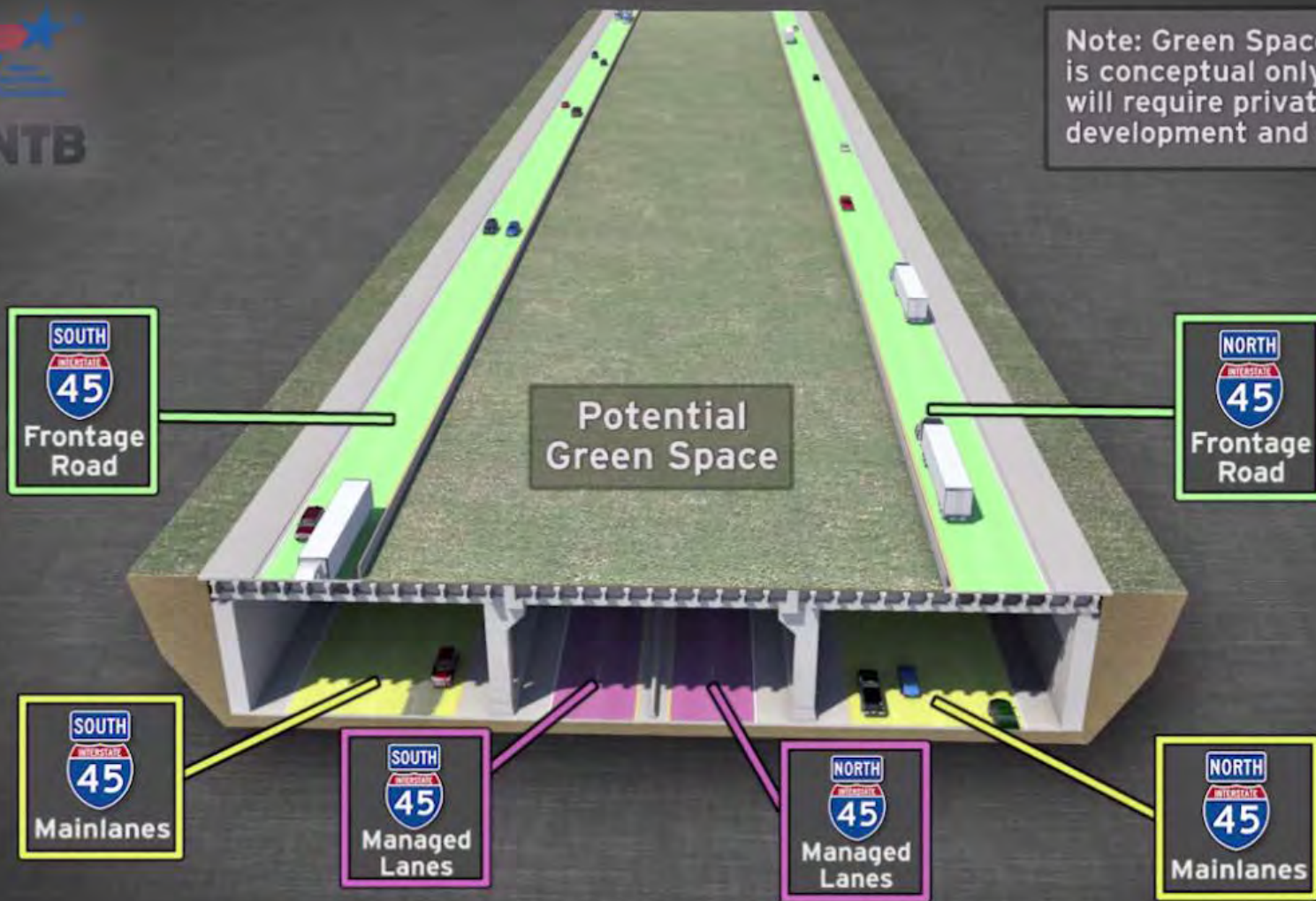


Segment 2 - I-610 to I-10

PRELIMINARY-SUBJECT TO CHANGE

PROPOSED RECOMMENDED ALTERNATIVE: SEGMENT 2

View of Proposed Improvements near North Main St. with Potential Green Space



PRELIMINARY-SUBJECT TO CHANGE

GREEN SPACE EXAMPLE: EXPOSITION / COMMERCE – DALLAS

Maximize Connections & Public/Private Opportunities



THE EAST CORRIDOR

CONNECTIONS • EXPOSITION and COMMERCE PARK

AUGUST 2008



GREEN SPACE EXAMPLE: KLYDE WARREN PARK – DALLAS



GREEN SPACE EXAMPLE: KLYDE WARREN PARK – DALLAS

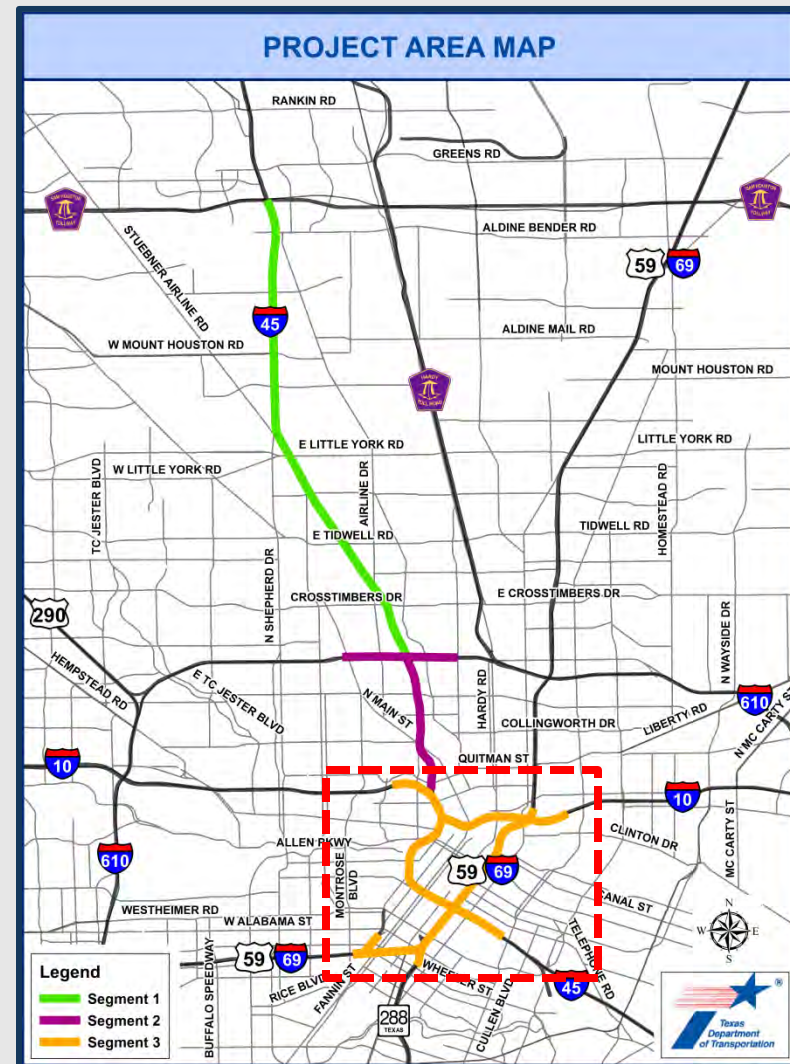


PROPOSED RECOMMENDED ALTERNATIVE: SEGMENT 3

Segment 3 Features

- Realign I-45 to be parallel with I-10 and US 59/I-69*
- Depress US 59/I-69* from Spur 527 to Downtown
- Add I-10 Express Lanes from I-45 to US 59/I-69*
- Remove existing I-45 Pierce Elevated

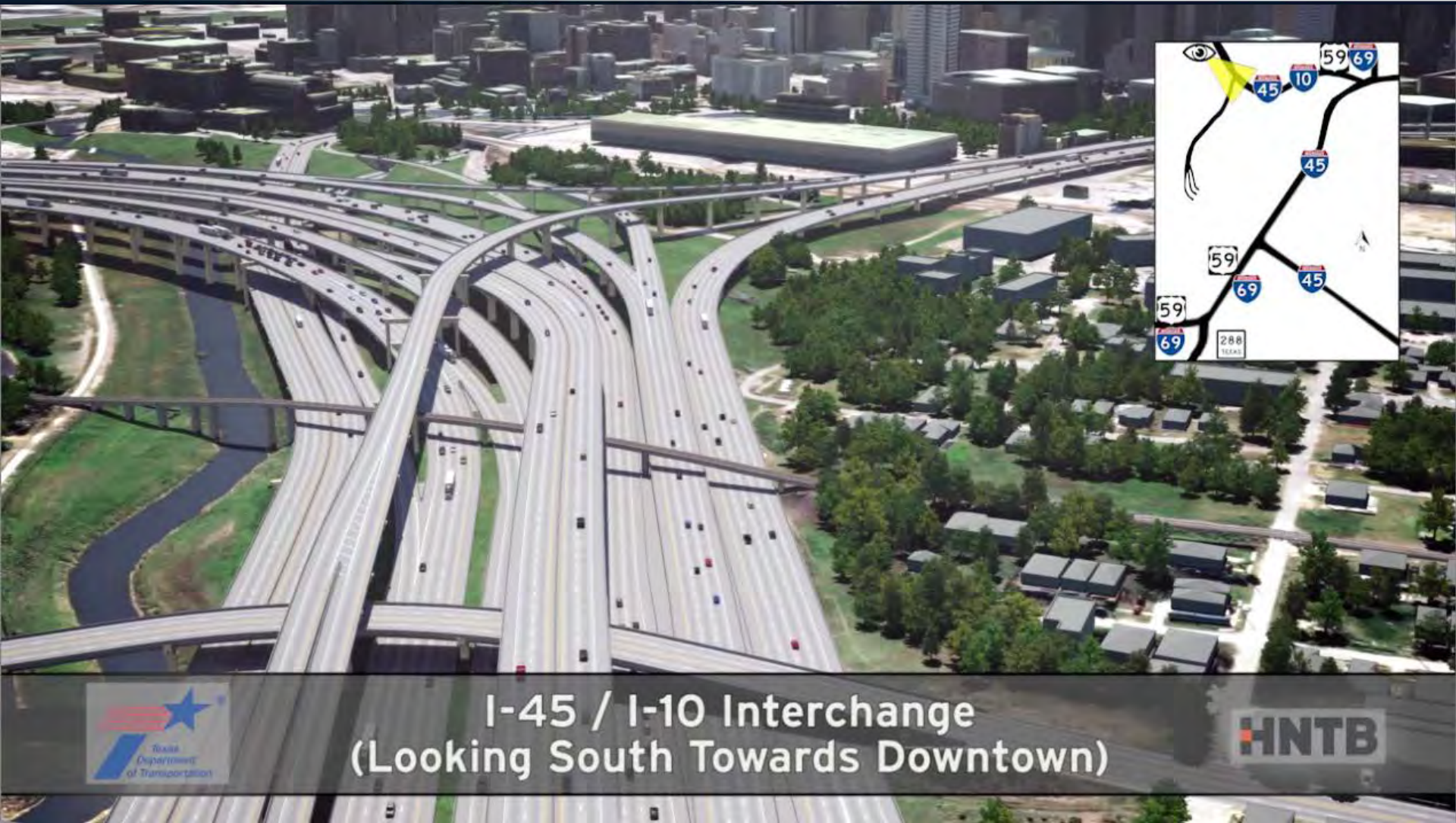
**Per Minute Order 114231 dated March 26, 2015, the Texas Transportation Commission designated US 59 within the project limits as I-69.*



PROPOSED RECOMMENDED ALTERNATIVE: SEGMENT 3



PROPOSED RECOMMENDED ALTERNATIVE: SEGMENT 3



I-45 / I-10 Interchange
(Looking South Towards Downtown)



PRELIMINARY-SUBJECT TO CHANGE

PROPOSED RECOMMENDED ALTERNATIVE: SEGMENT 3



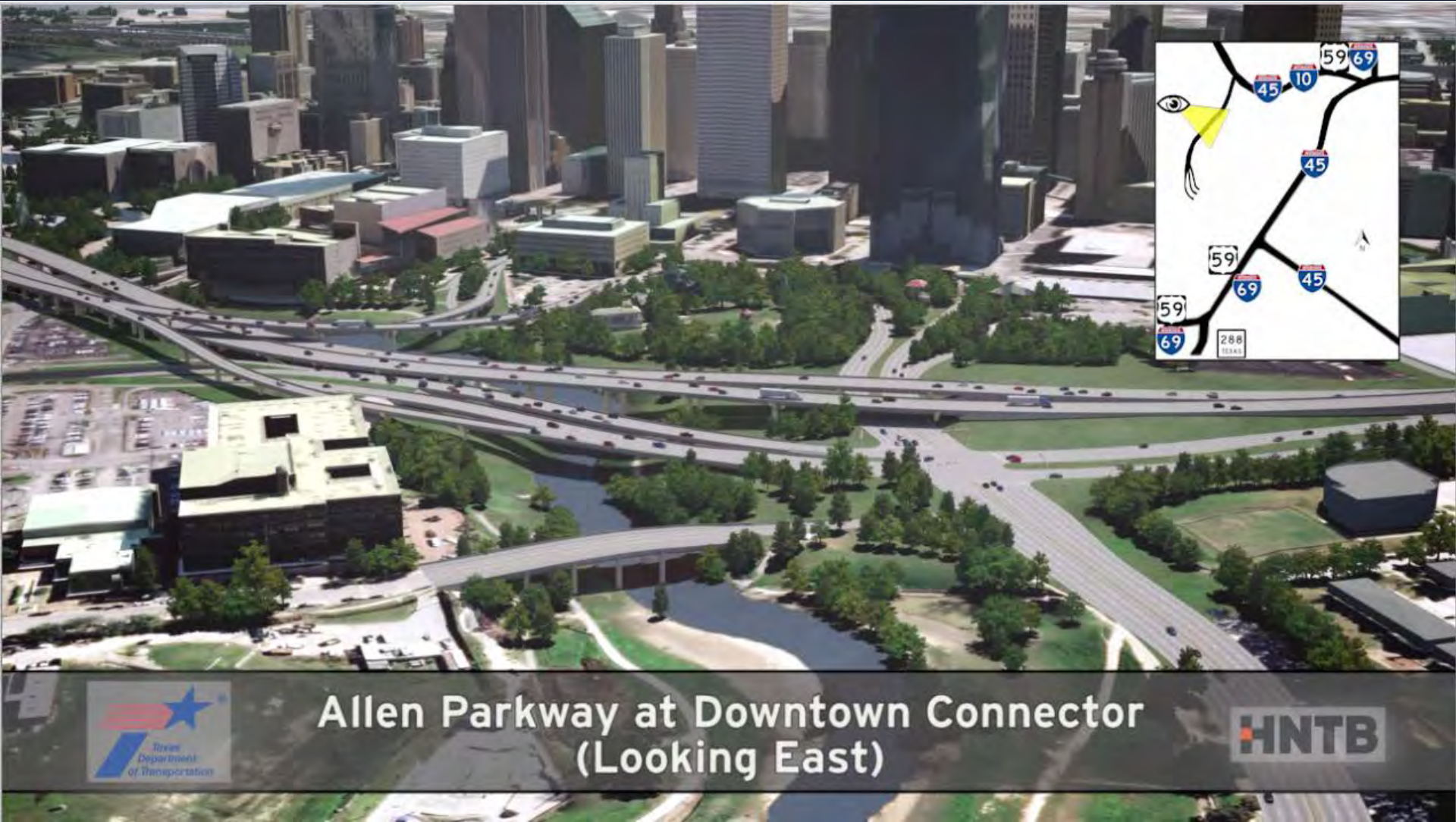
PRELIMINARY-SUBJECT TO CHANGE

PROPOSED RECOMMENDED ALTERNATIVE: SEGMENT 3

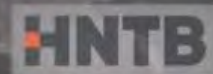


PRELIMINARY-SUBJECT TO CHANGE

PROPOSED RECOMMENDED ALTERNATIVE: SEGMENT 3



Allen Parkway at Downtown Connector
(Looking East)



PRELIMINARY-SUBJECT TO CHANGE

PROPOSED RECOMMENDED ALTERNATIVE: SEGMENT 3



PRELIMINARY-SUBJECT TO CHANGE

PROPOSED RECOMMENDED ALTERNATIVE: SEGMENT 3



US 59 / I-10 Interchange
(Looking Southwest)

PRELIMINARY-SUBJECT TO CHANGE

PROPOSED RECOMMENDED ALTERNATIVE: SEGMENT 3

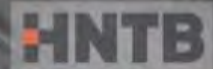


PRELIMINARY-SUBJECT TO CHANGE

PROPOSED RECOMMENDED ALTERNATIVE: SEGMENT 3



I-45 / US 59 Interchange
(Looking Northwest)



PRELIMINARY-SUBJECT TO CHANGE

PROPOSED RECOMMENDED ALTERNATIVE: SEGMENT 3



PRELIMINARY-SUBJECT TO CHANGE

PROPOSED RECOMMENDED ALTERNATIVE: SEGMENT 3



US 59 / SH 288 Interchange
(Looking North)

HNTB

PRELIMINARY-SUBJECT TO CHANGE

PROPOSED RECOMMENDED ALTERNATIVE: SEGMENT 3



PRELIMINARY-SUBJECT TO CHANGE

PROPOSED RECOMMENDED ALTERNATIVE: SEGMENT 3



PRELIMINARY-SUBJECT TO CHANGE

PROPOSED RECOMMENDED ALTERNATIVE: SEGMENT 3

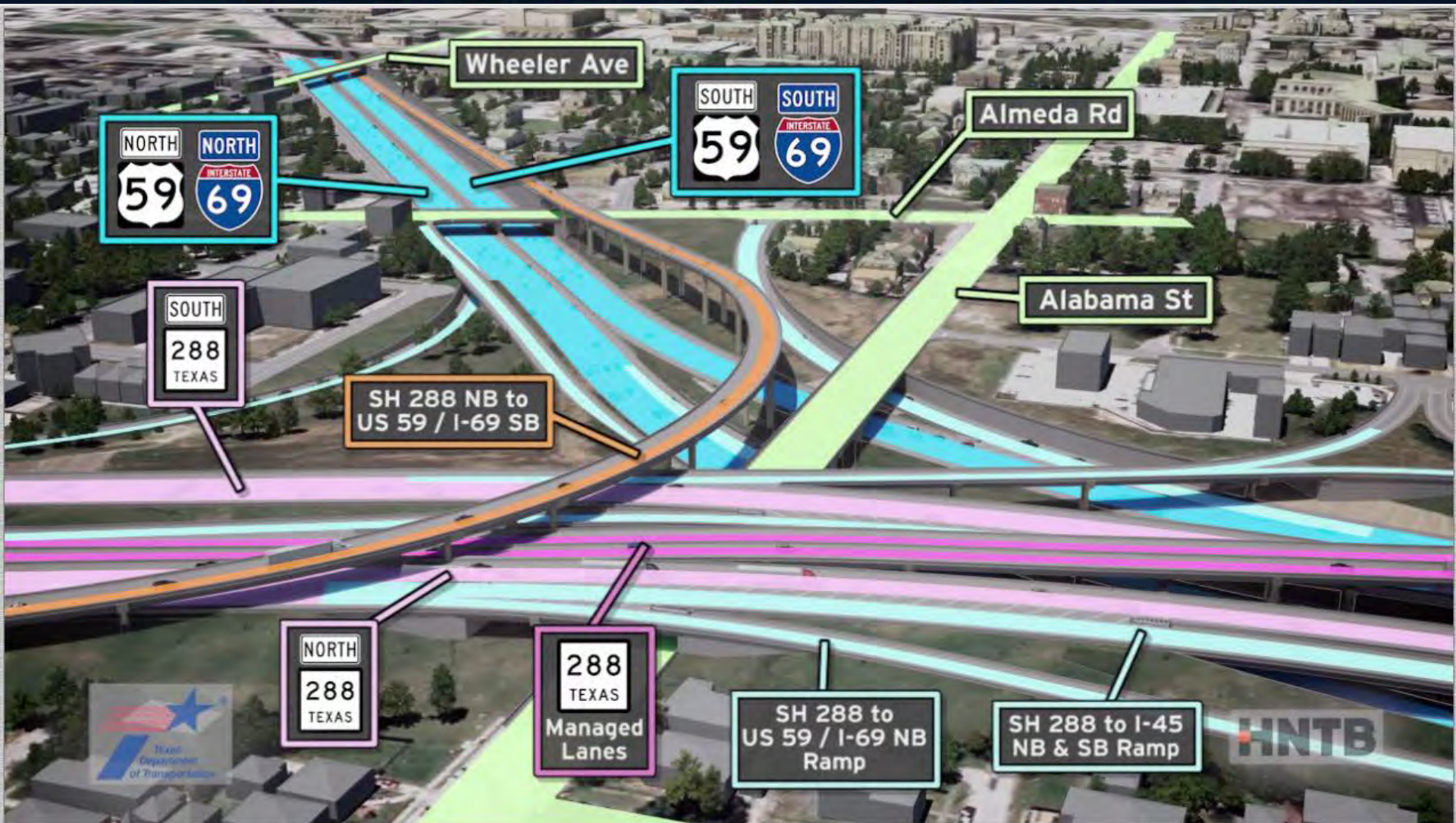


**US 59 / SH 288 Interchange
(Looking Southwest)**



PRELIMINARY-SUBJECT TO CHANGE

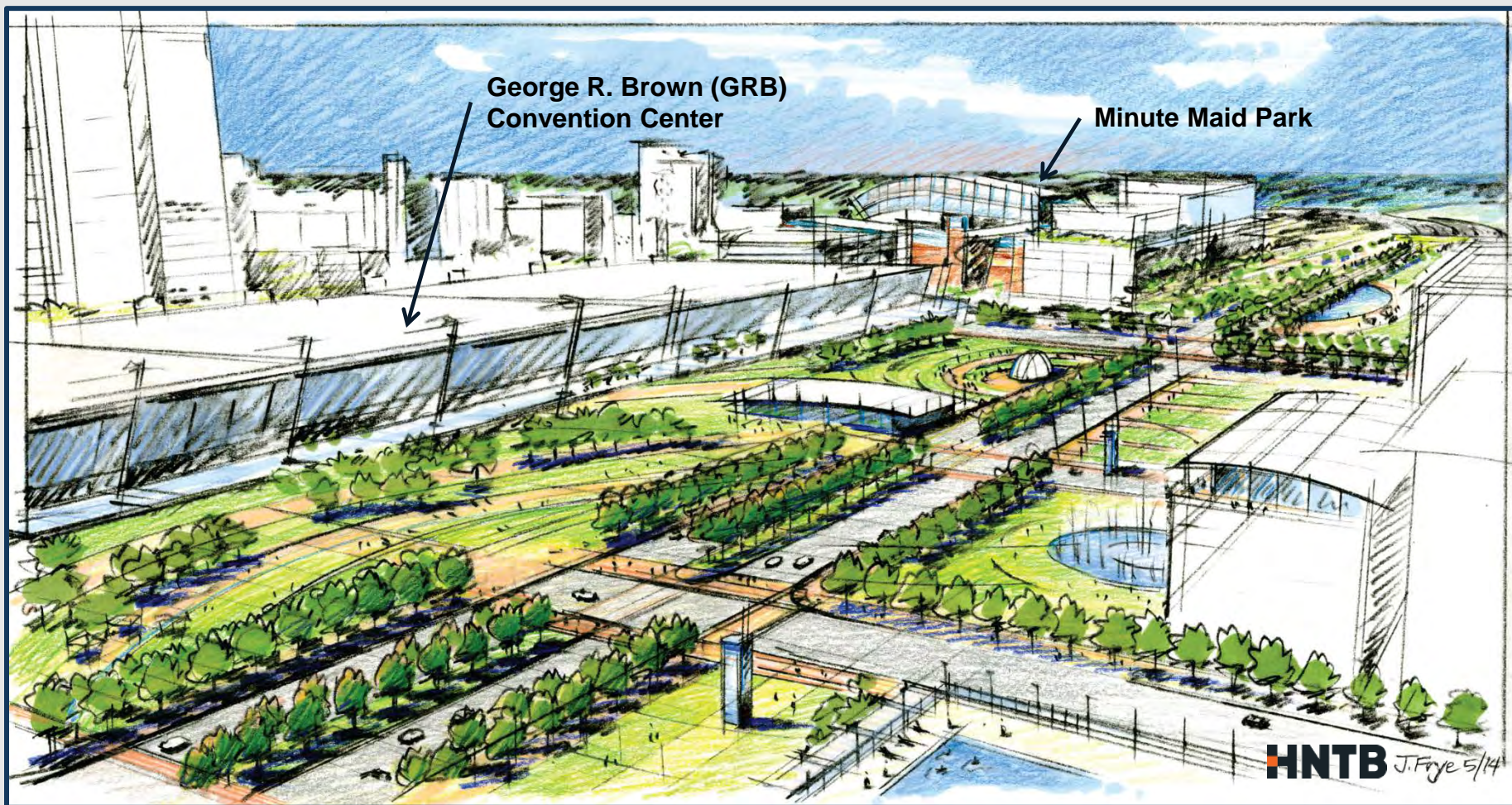
PROPOSED RECOMMENDED ALTERNATIVE: SEGMENT 3



PRELIMINARY-SUBJECT TO CHANGE

PROPOSED RECOMMENDED ALTERNATIVE: SEGMENT 3

Artist's Sketch of Potential Green Space near the GRB Convention Center



NOTE: Green space option is conceptual only and would require separate development and funding.

PRELIMINARY-SUBJECT TO CHANGE

PROPOSED RECOMMENDED ALTERNATIVE: SEGMENT 3

Looking North from Capital Street

US 59 Elevated Section (current)



PRELIMINARY-SUBJECT TO CHANGE

SEGMENT 3 – DOWNTOWN TRAFFIC ANALYSIS RESULTS

Proposed Recommended Alternative – Positive Traffic Results

Build Alternatives Results Compared to the No-Build (AM Peak)				
Alternative	Reduction in Delay (VHT)	Increase in Systemwide Speed		Increase in Downtown Access
	(%)	(%)	(MPH)	(%)
11	20	35	+24	15

PRELIMINARY-SUBJECT TO CHANGE